

SECTIONAL SERIES



# Friendship — HOMES —

QUALITY | STYLE | PERSONALIZATION  
WITH YOU IN MIND



# Friendship HOMES

## QUALITY

Friendship Homes has been named the manufacturer of the year for nearly a decade, we believe this is because of our high quality standards that are so important to us. Our homes are built in a controlled factory environment, reducing waste, and leaving a lower impact on the environment than traditional site built homes. They are built in less time and more efficiently than many other homes. High quality, cutting edge construction have been our priority since Friendship Homes began construction of homes in 1982. Since then, they have built thousands of homes for happy families.

## STYLE

Our homes are built with style in mind. Our designers take the latest trends, and combine them with timeless design to bring you a home that is as beautiful as any stick-built home. We offer many finishes for countertops, cabinets, walls and flooring. You also have the option to choose from other available finishes so that you are able to make your new home feel like just that – home.

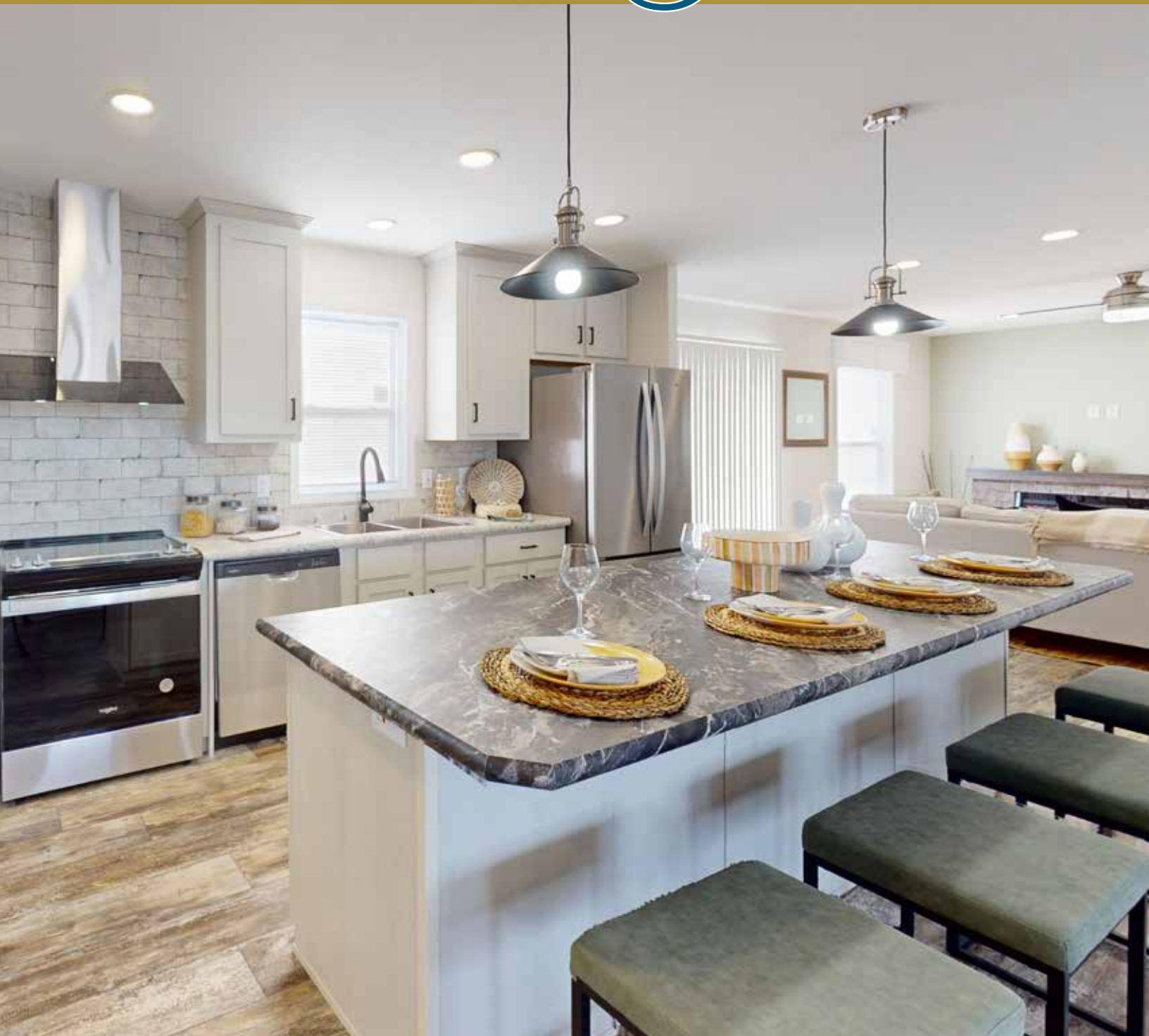
## LEARN MORE

Floorplans, specifications, options and swatches are subject to change, see home specialist for most recent floorplans. Homes shown in photos may not be available. More detailed floor plans are available on our website. Visit [friendshiphomesmn.com](http://friendshiphomesmn.com) for more information.

Dozens of other floorplans that are not shown in this book, are available for factory order from Friendship Homes. See home specialists for more home options and floorplans. Visit [friendshiphomesmn.com](http://friendshiphomesmn.com) for more information.



# Inspiration Sectional





INSPIRATION WESTON

Visit our website for more photos of our homes.

There are many options to choose from for selecting countertops, cabinets, walls, flooring and fixtures to personalize your new home.

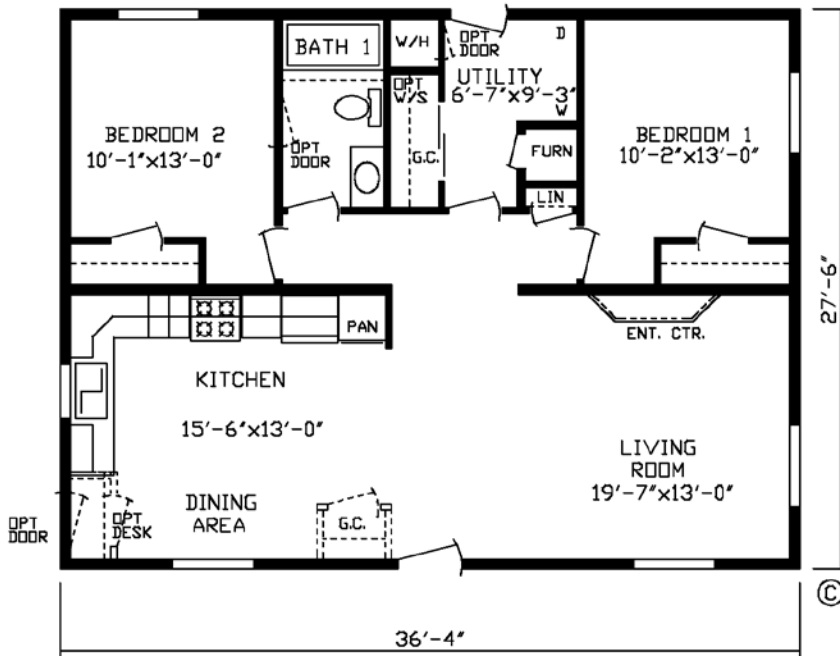


INSPIRATION BELMONT

# The Paradise

Model #184008  
36' x 28' • 999 sq. ft.

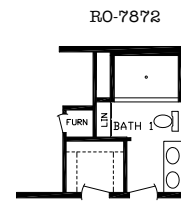
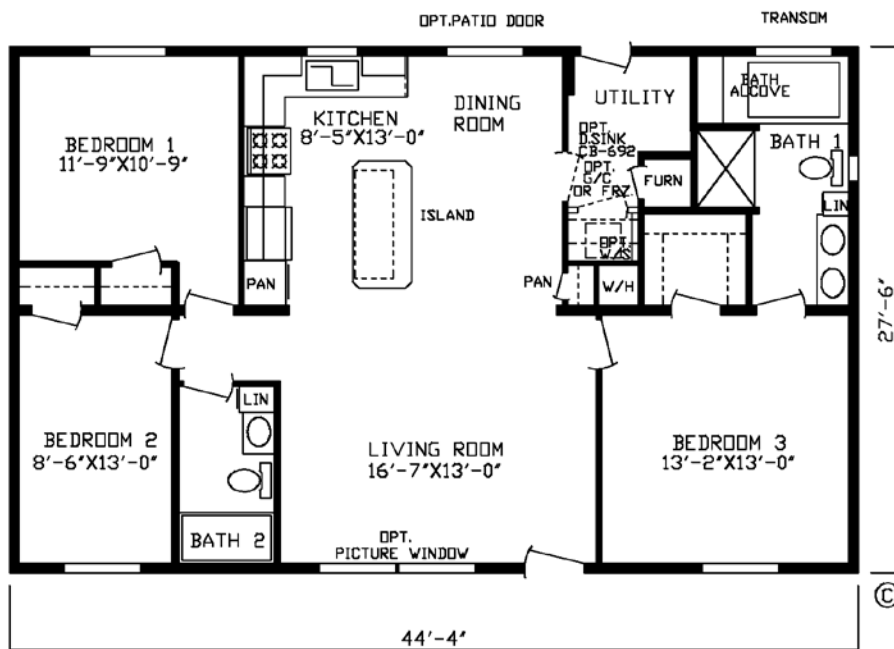
2 Bedroom  
1 Bath



# The Edison

Model #184009  
44' x 28' • 1219 sq. ft.

3 Bedroom  
2 Bath



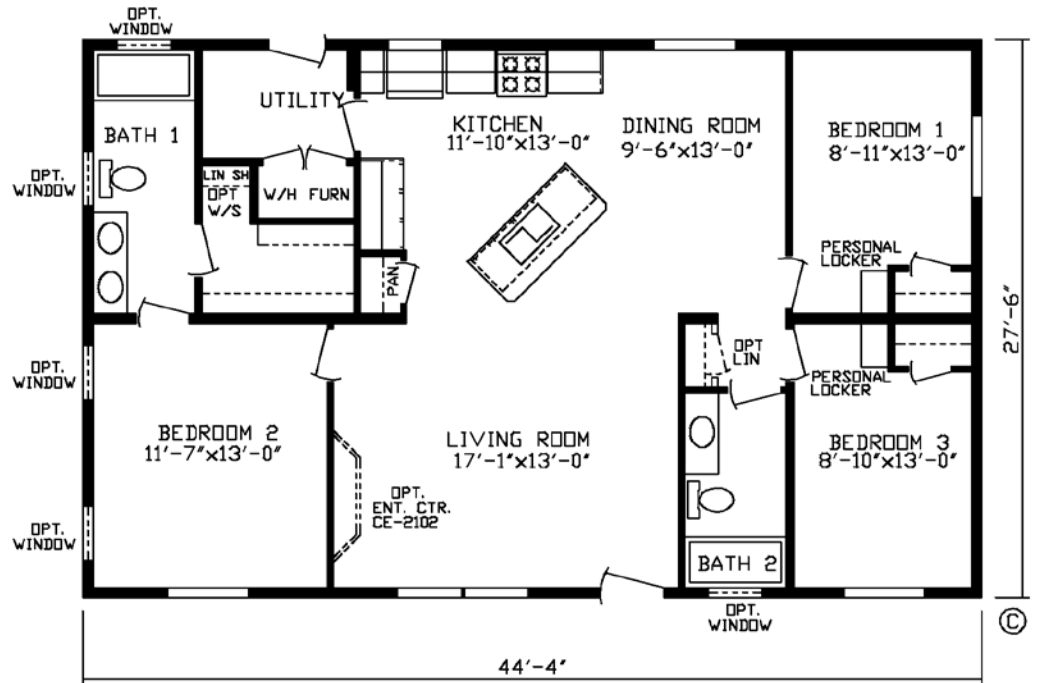
# The Hayden

Model #184036

44' x 28' • 1219 sq. ft.

3 Bedroom

2 Bath



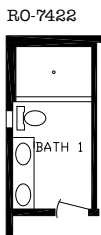
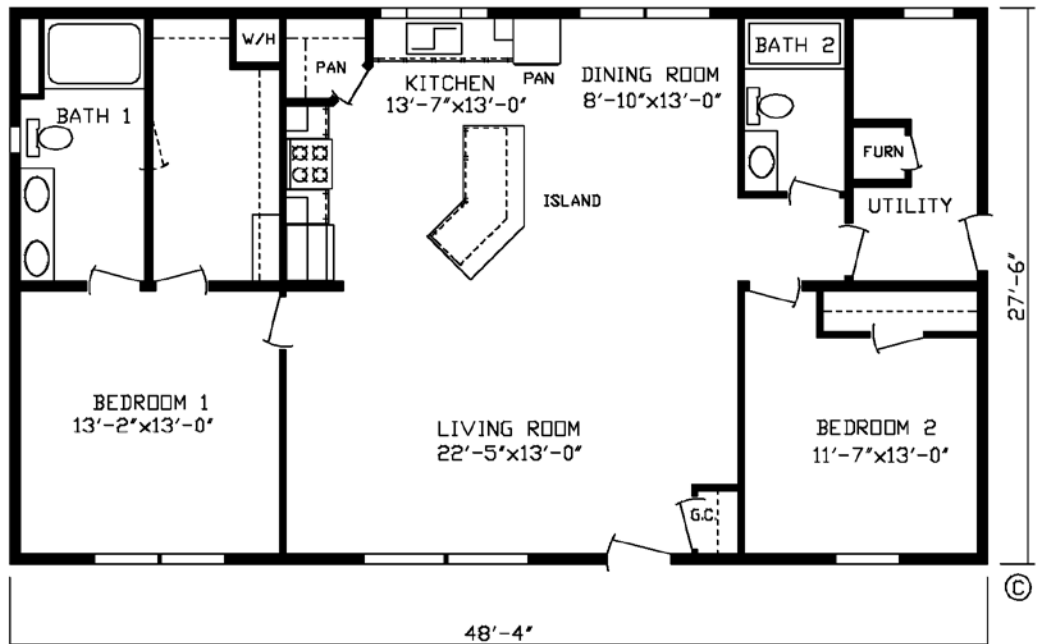
# The Harrison

Model #184026

48' x 28' • 1329 sq. ft.

2 Bedroom

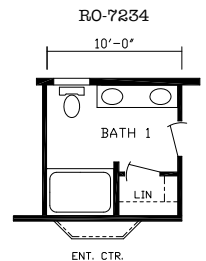
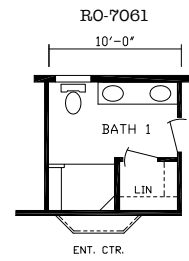
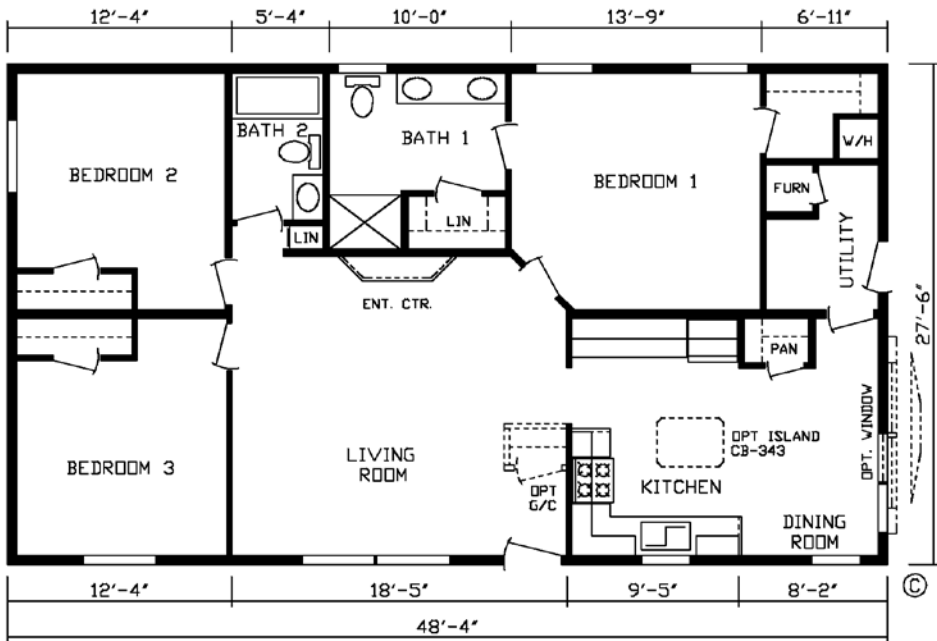
2 Bath



# The Cleveland

Model #184010  
48' x 28' • 1329 sq. ft.

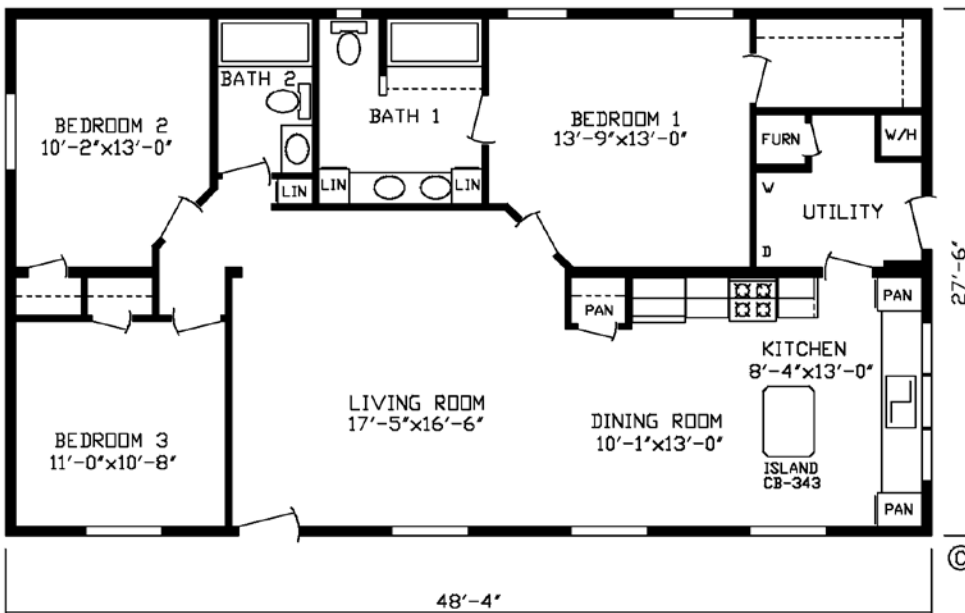
3 Bedroom  
2 Bath



# The Nokomis

Model #184046  
48' x 28' • 1329 sq. ft.

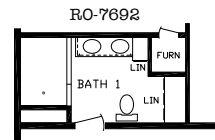
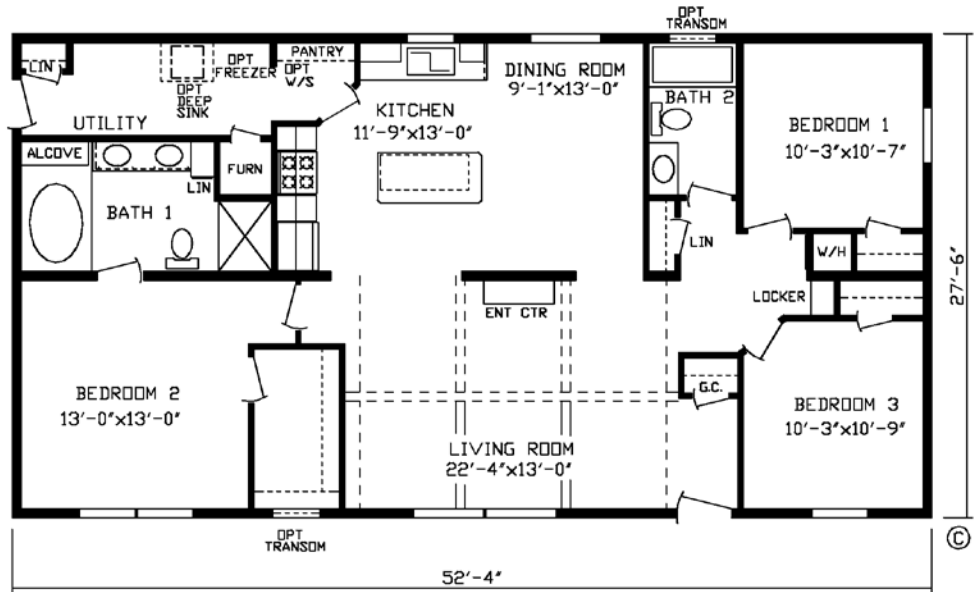
3 Bedroom  
2 Bath



# The Franklin

Model #184006  
52' x 28' • 1439 sq. ft.

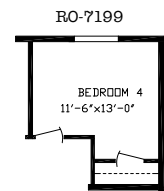
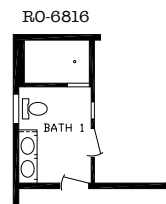
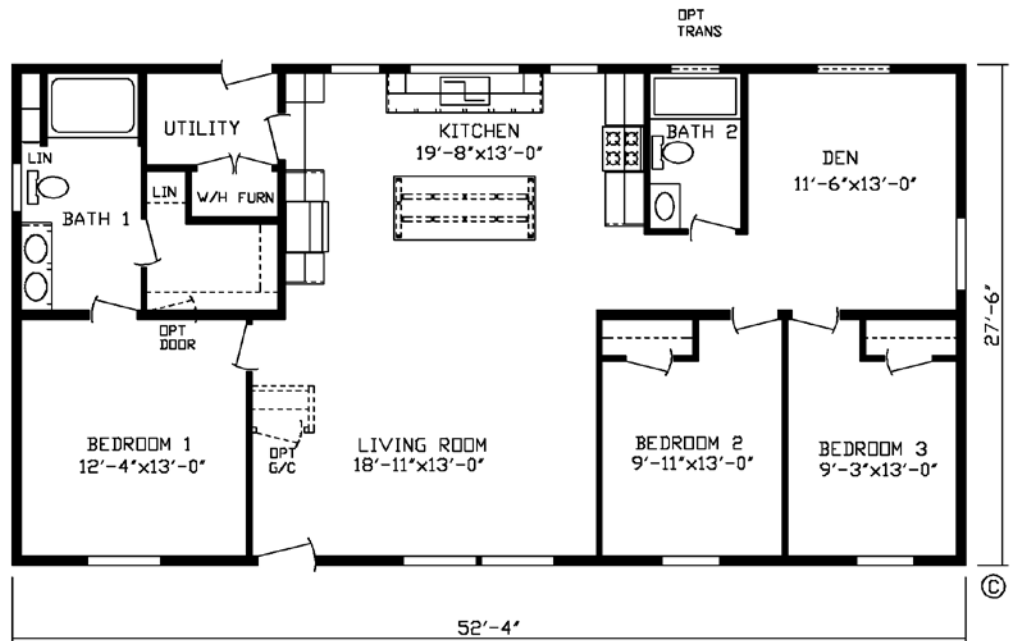
3 Bedroom  
2 Bath



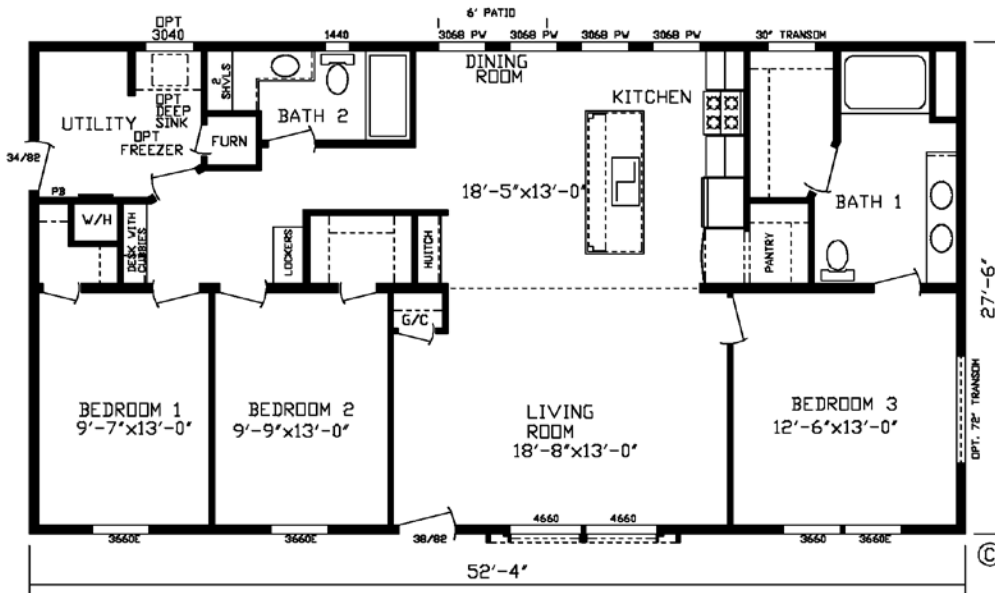
# The Weston

Model #184012  
52' x 28' • 1439 sq. ft.

3 Bedroom  
2 Bath

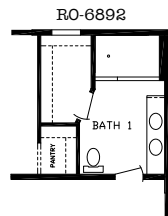


# The Tesla

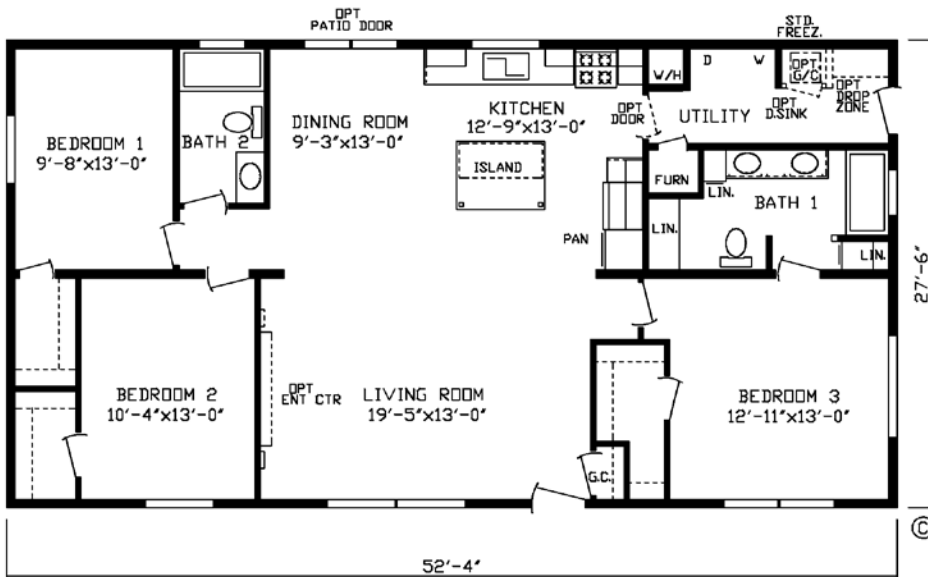


Model #184013  
52' x 28' • 1439 sq. ft.

3 Bedroom  
2 Bath

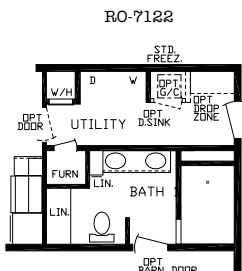


# The Jefferson



Model #184018  
52' x 28' • 1439 sq. ft.

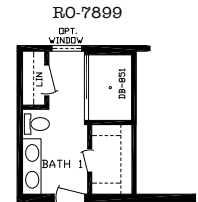
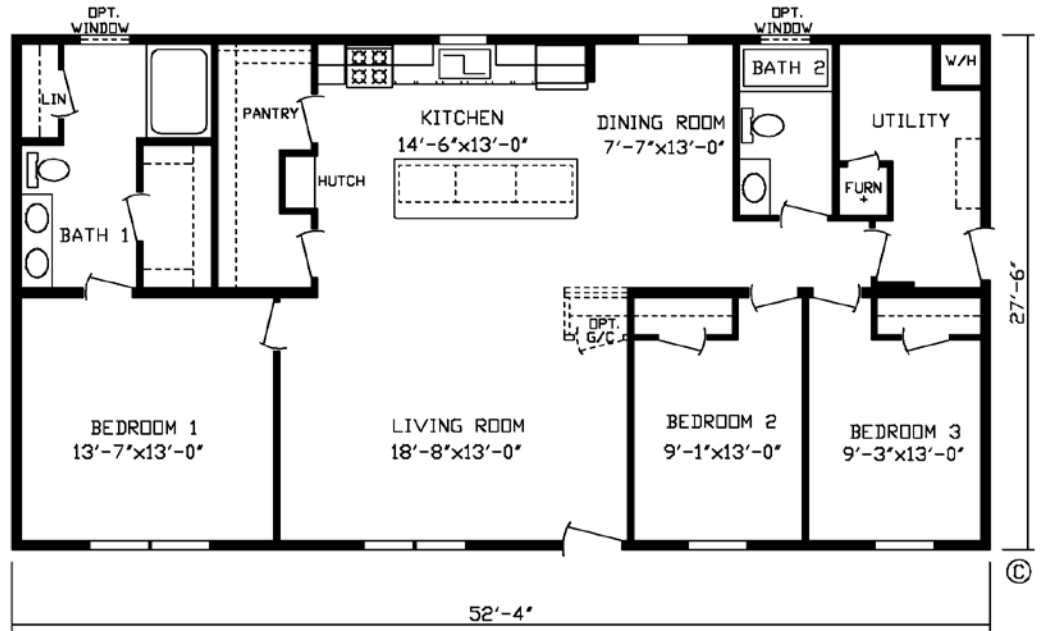
3 Bedroom  
2 Bath



# The Landmark

Model #184040  
52' x 28' • 1439 sq. ft.

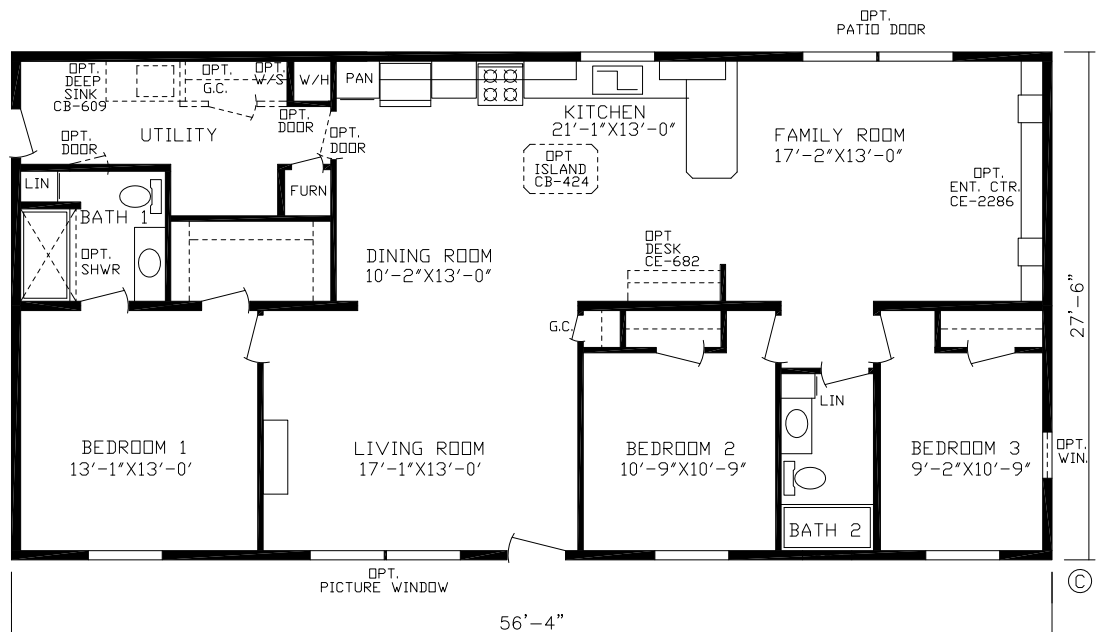
3 Bedroom  
2 Bath



# The Riviera

Model #184007  
56' x 28' • 1549 sq. ft.

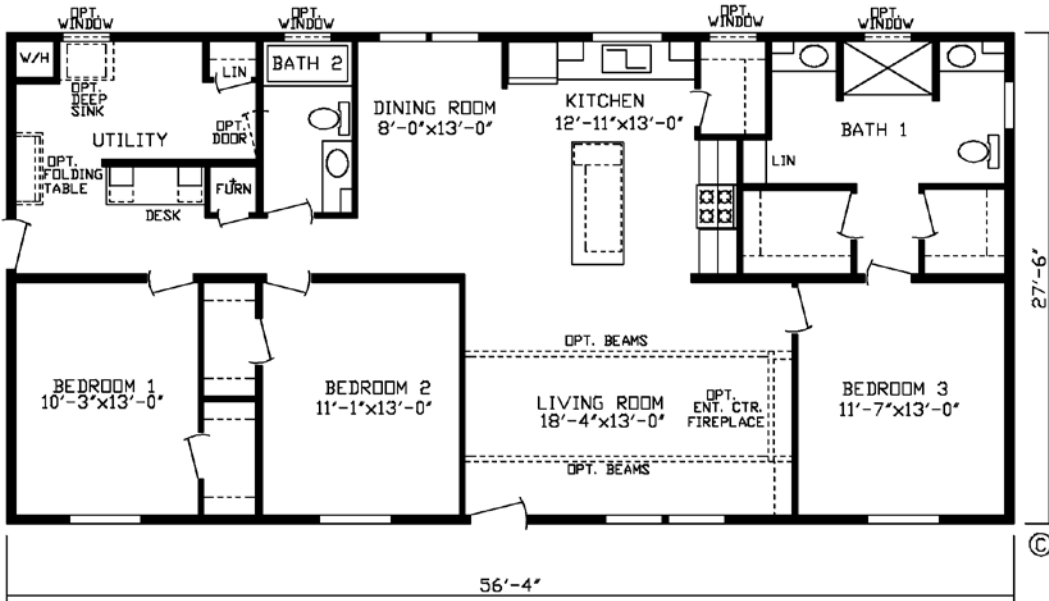
3 Bedroom  
2 Bath



# The Belmont

Model #184044  
56' x 28' • 1549 sq. ft.

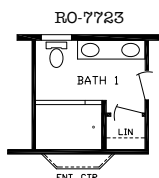
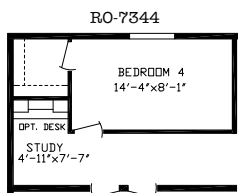
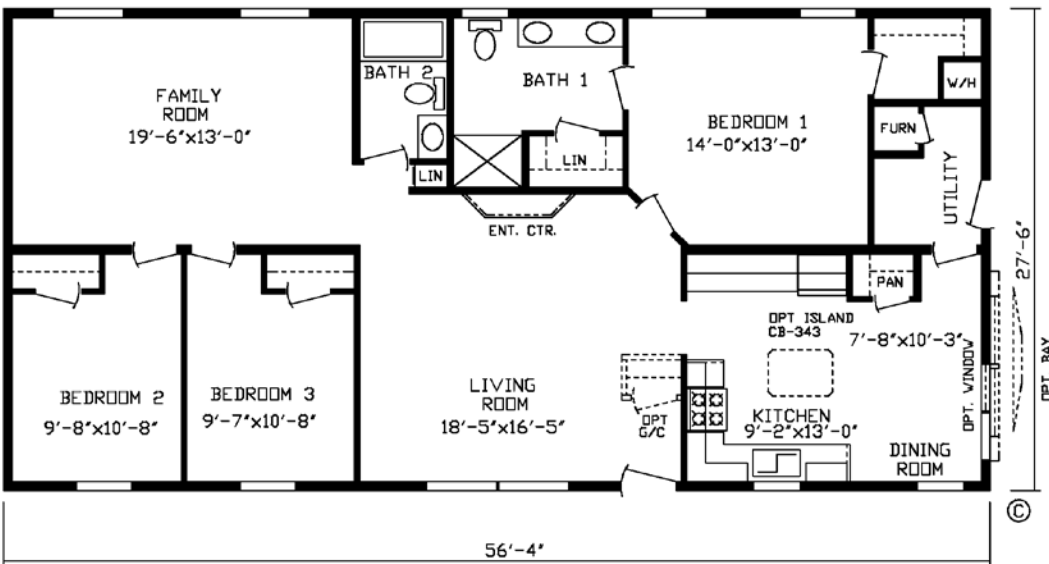
3 Bedroom  
2 Bath



# The Cleveland XL

Model #184022  
56' x 28' • 1549 sq. ft.

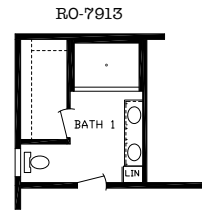
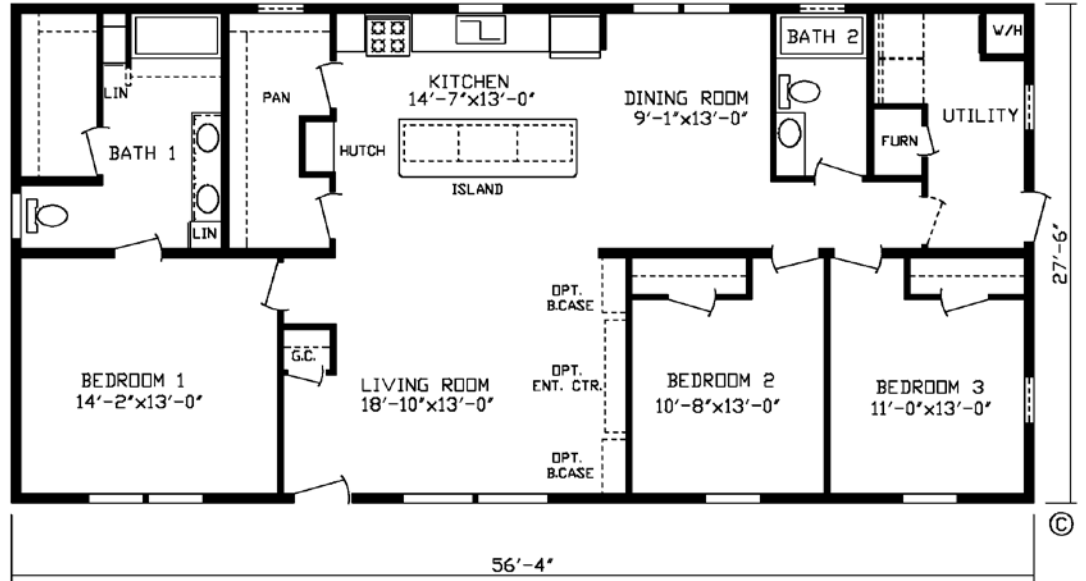
3 Bedroom  
2 Bath



# The Landmark XL

Model #184042  
56' x 28' • 1549 sq. ft.

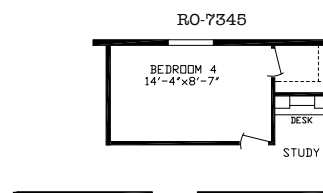
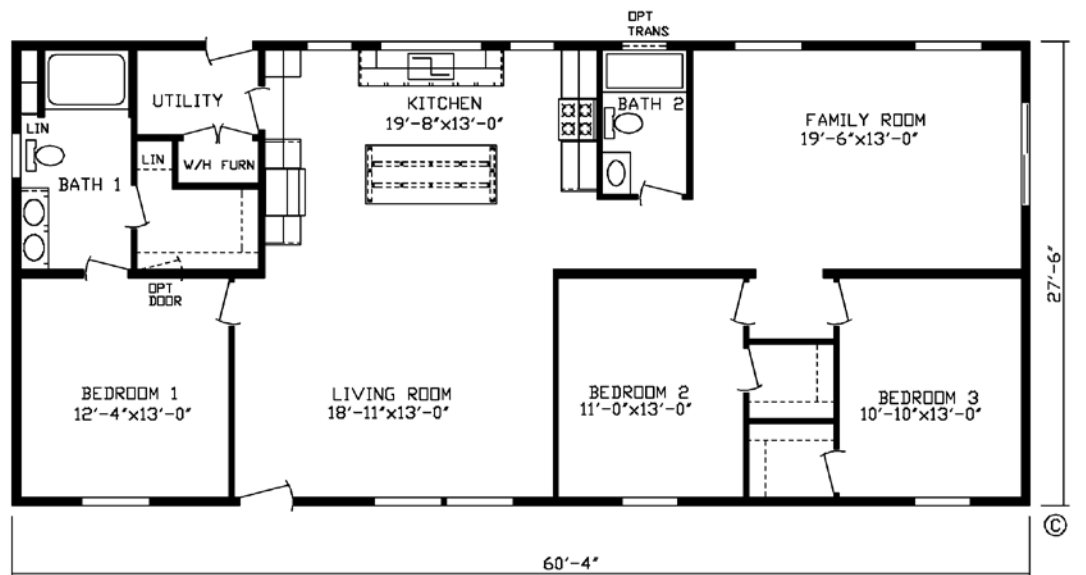
3 Bedroom  
2 Bath



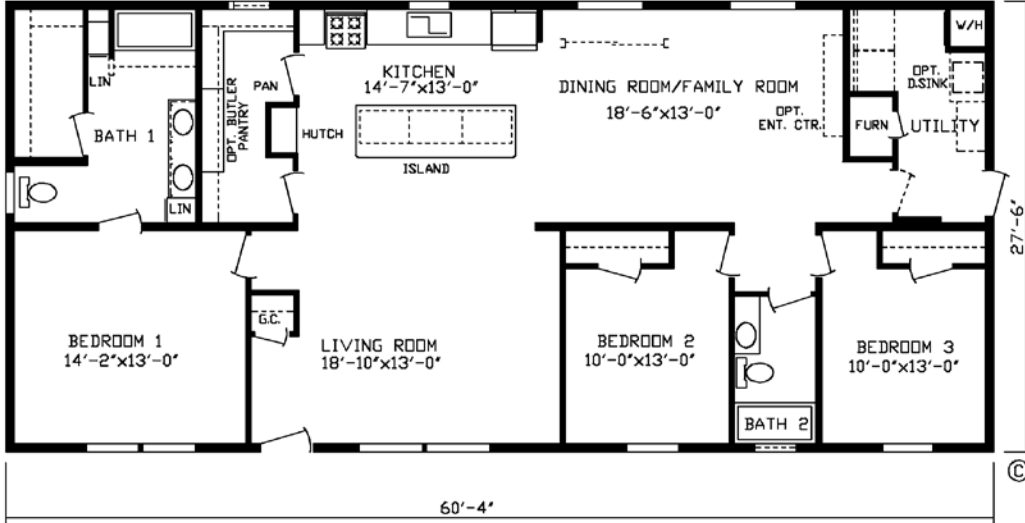
# The Weston XL

Model #184023  
60' x 28' • 1659 sq. ft.

3 Bedroom  
2 Bath

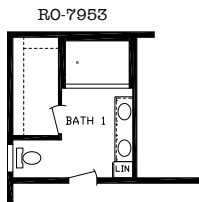


# The Landmark XXL



Model #184045  
60' x 28' • 1659 sq. ft.

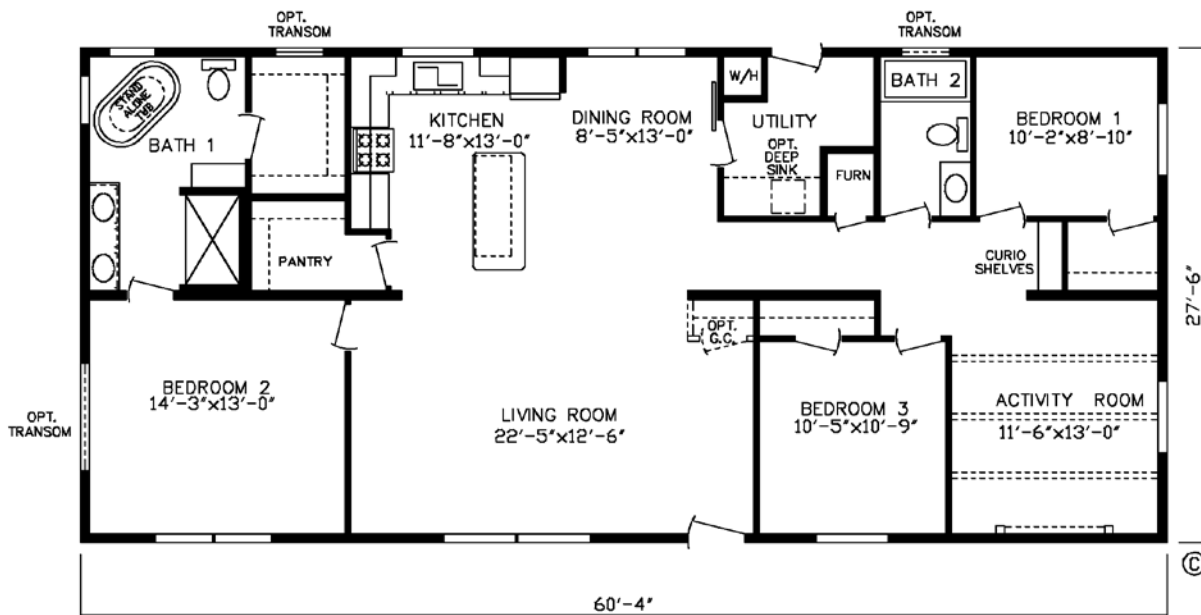
3 Bedroom  
2 Bath



# The Horizon

Model #184038  
60' x 28' • 1659 sq. ft.

3 Bedroom  
2 Bath



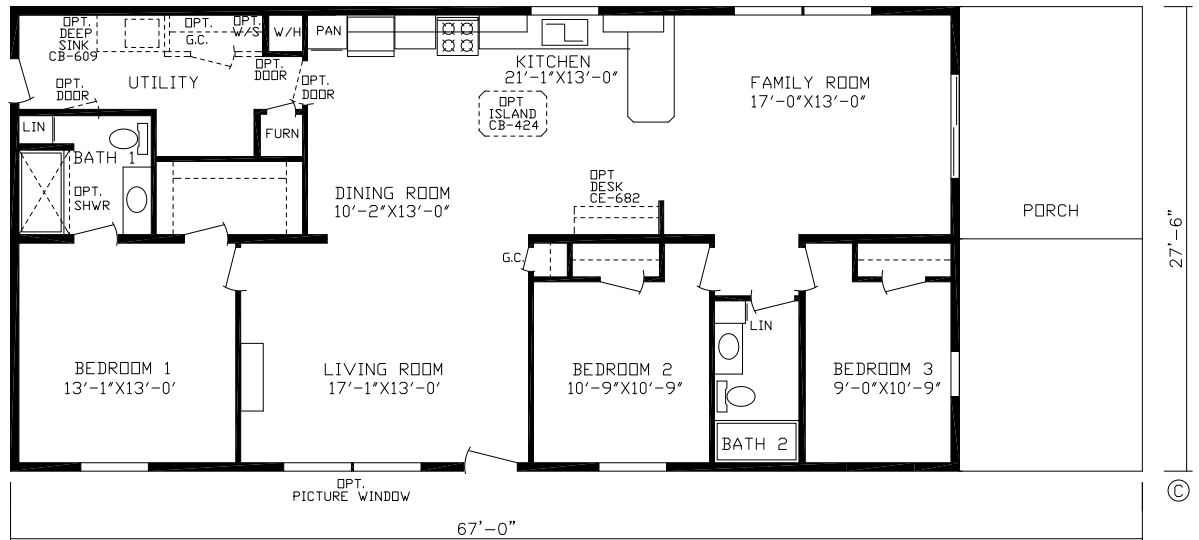
# The Riviera Porch

Model #184035

67' x 28' • 1544 sq. ft.

3 Bedroom

2 Bath



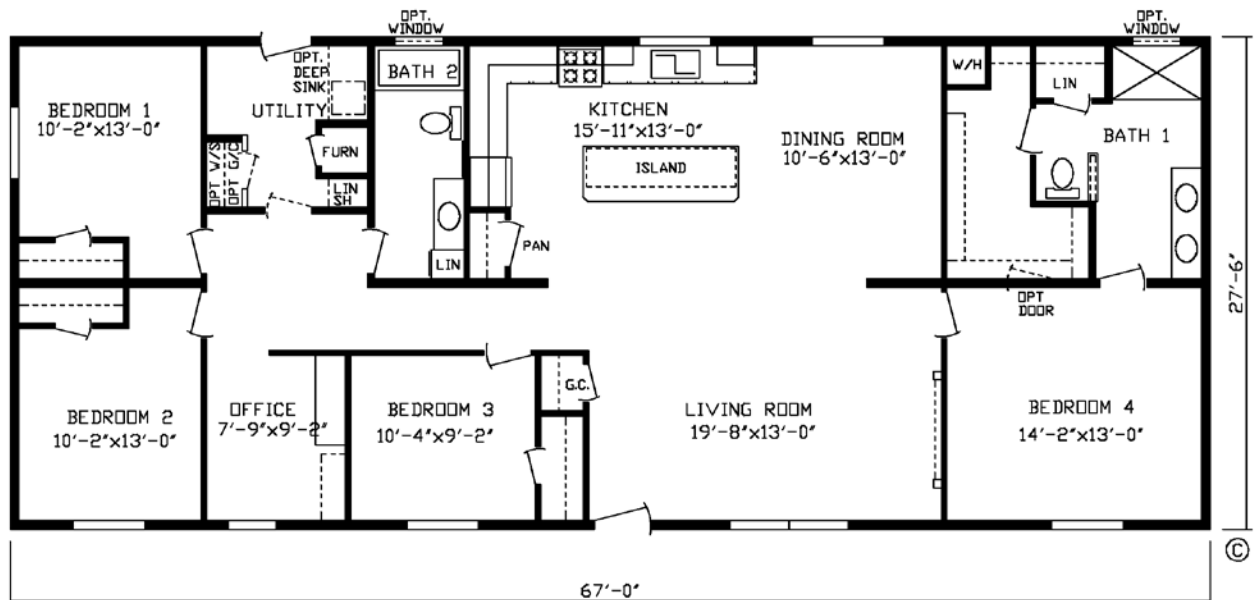
# The Rapids

Model #184037

67' x 28' • 1843 sq. ft.

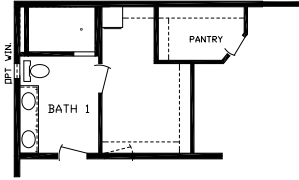
4 Bedroom

2 Bath



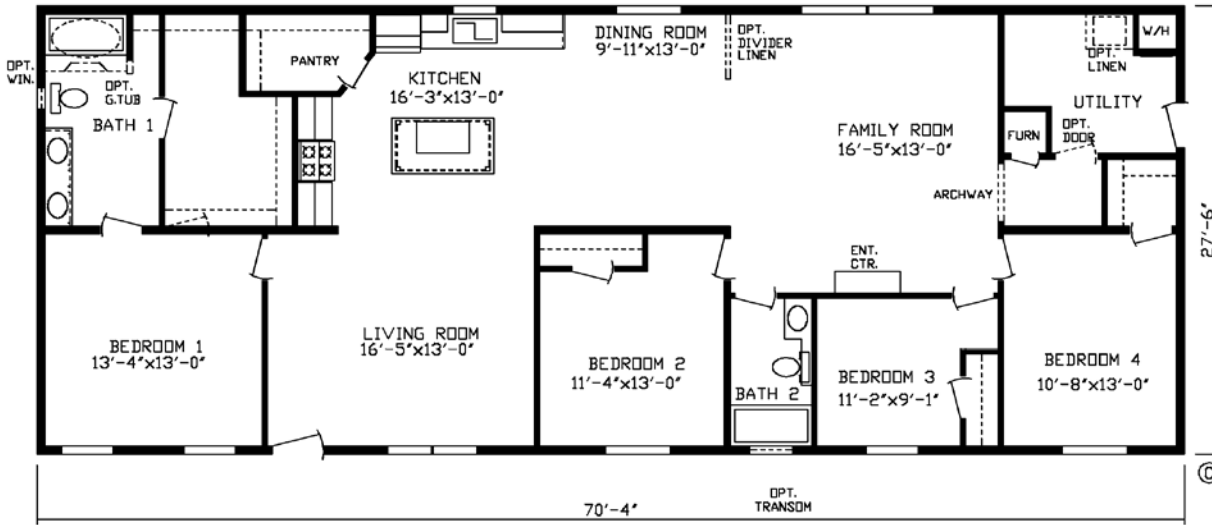
# The McKinley

RO-7077



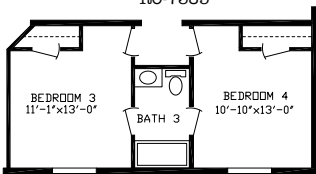
Model #184005  
70' x 28' • 1934 sq. ft.

4 Bedroom  
2 Bath

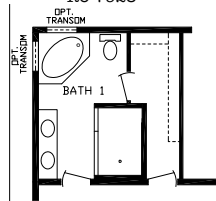


# The Momentum

RO-7385

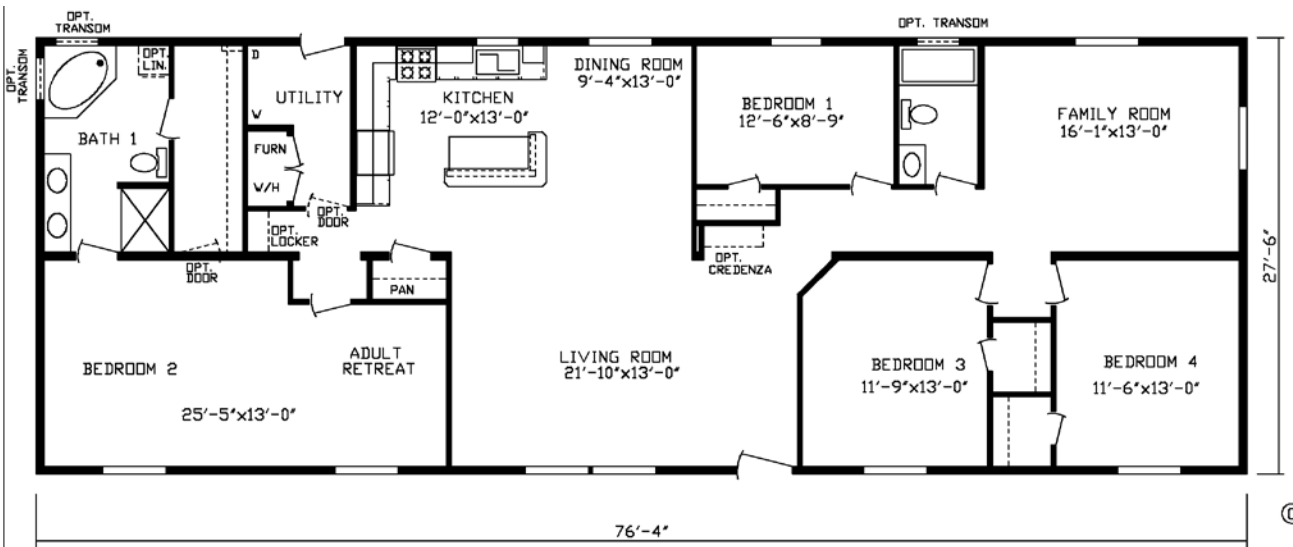


RO-7928



Model #184020  
76' x 28' • 2099 sq. ft.

4 Bedroom  
2 Bath



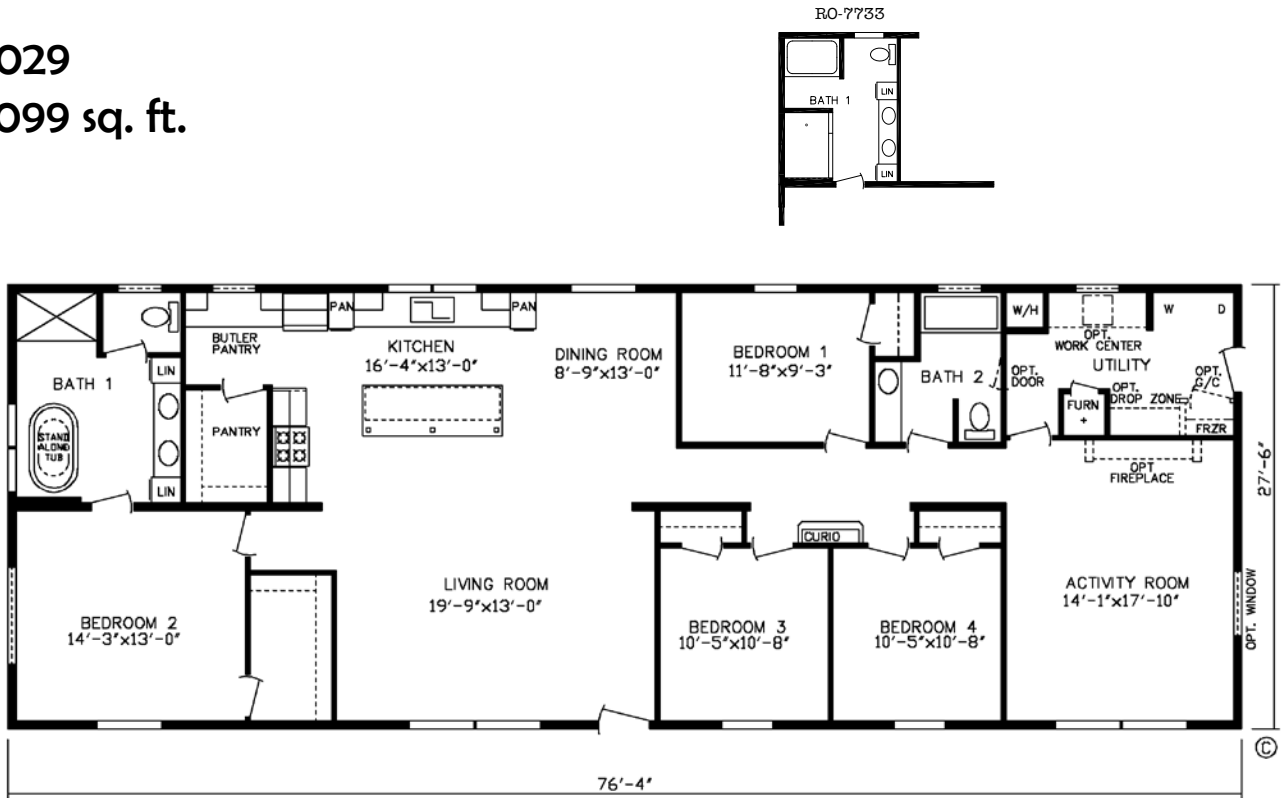
# The Remington

Model #184029

76' x 28' • 2099 sq. ft.

4 Bedroom

2 Bath



# The Winchester

Model #184021

56' x 32' • 1709 sq. ft.

3 Bedroom

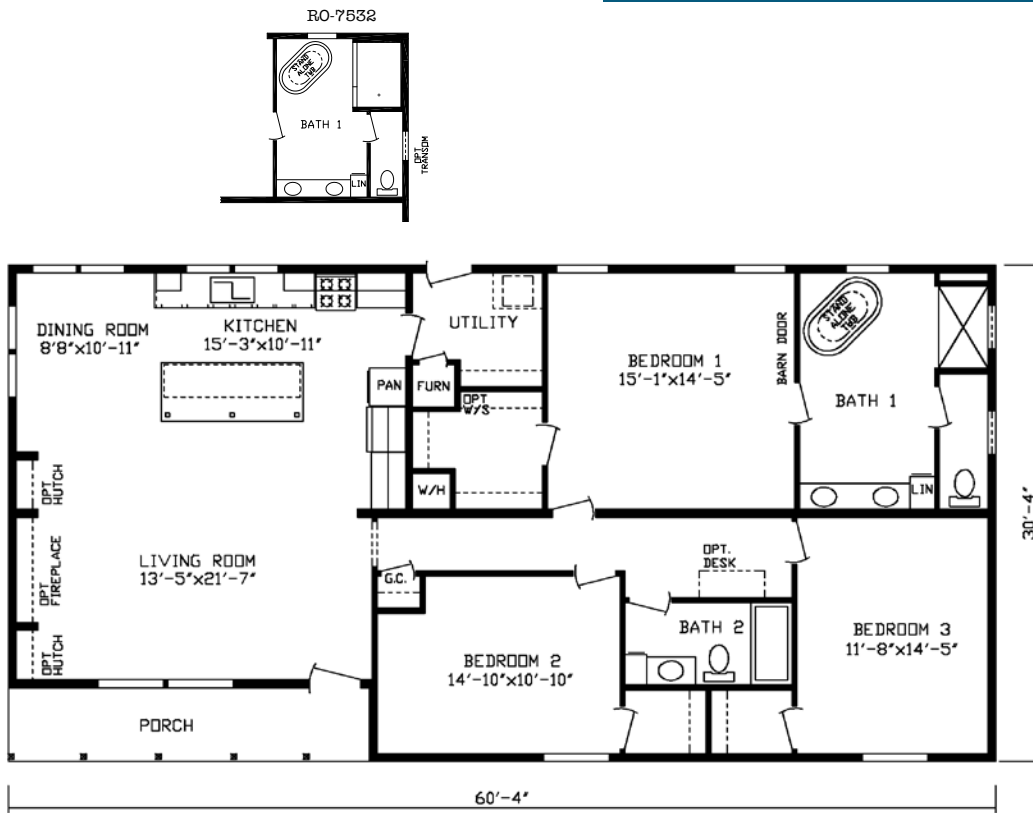
2 Bath



# The Shoreview

Model #184032  
60' x 32' • 1830 sq. ft.

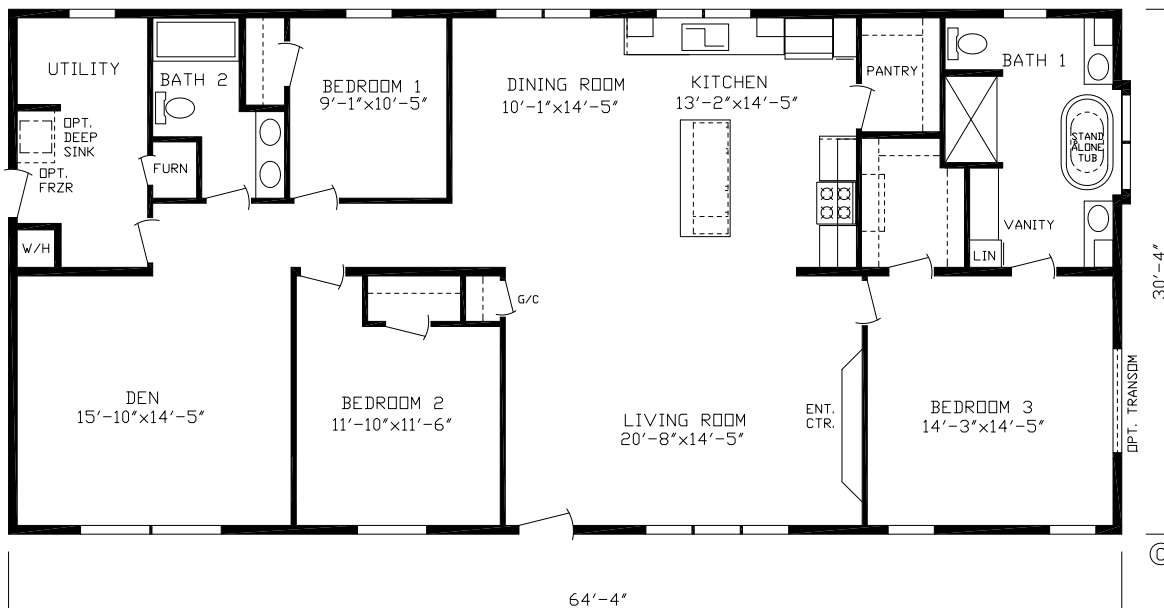
3 Bedroom  
2 Bath



# The Winchester Den

Model #184030  
64' x 32' • 1951 sq. ft.

3 Bedroom  
2 Bath



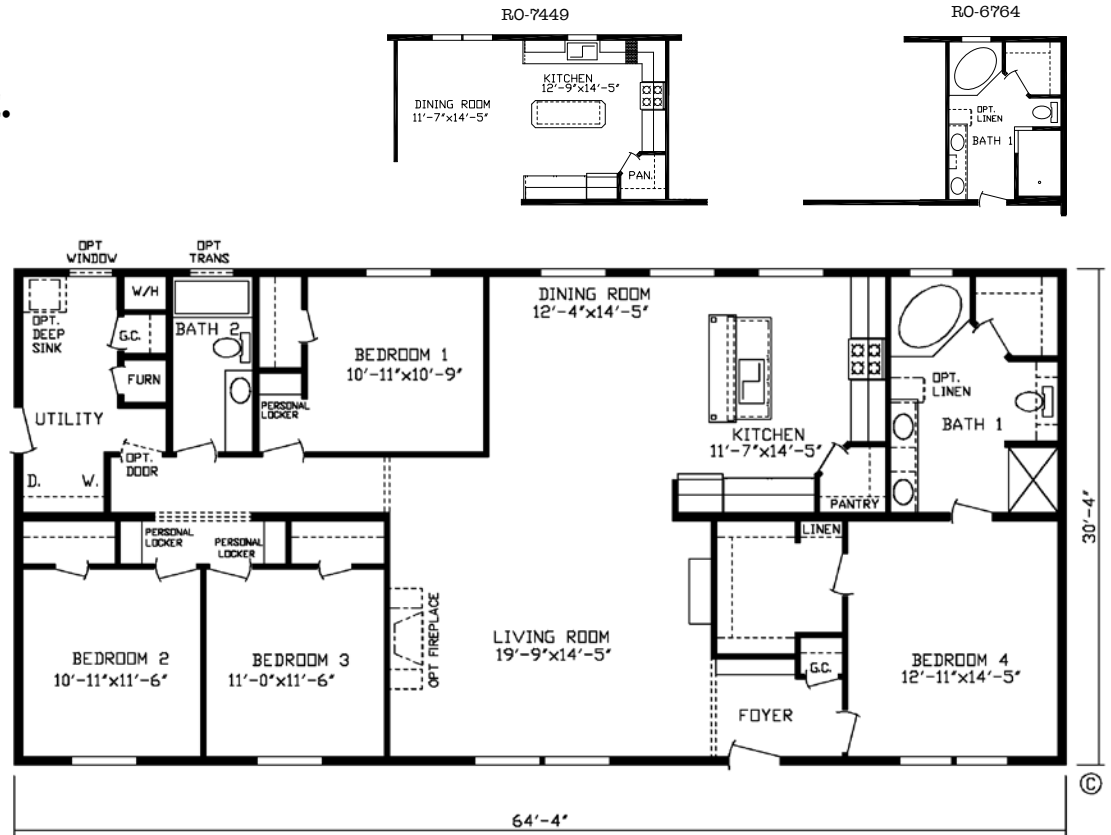
# The Danbury

Model #184001

64' x 32' • 1951 sq. ft.

4 Bedroom

2 Bath



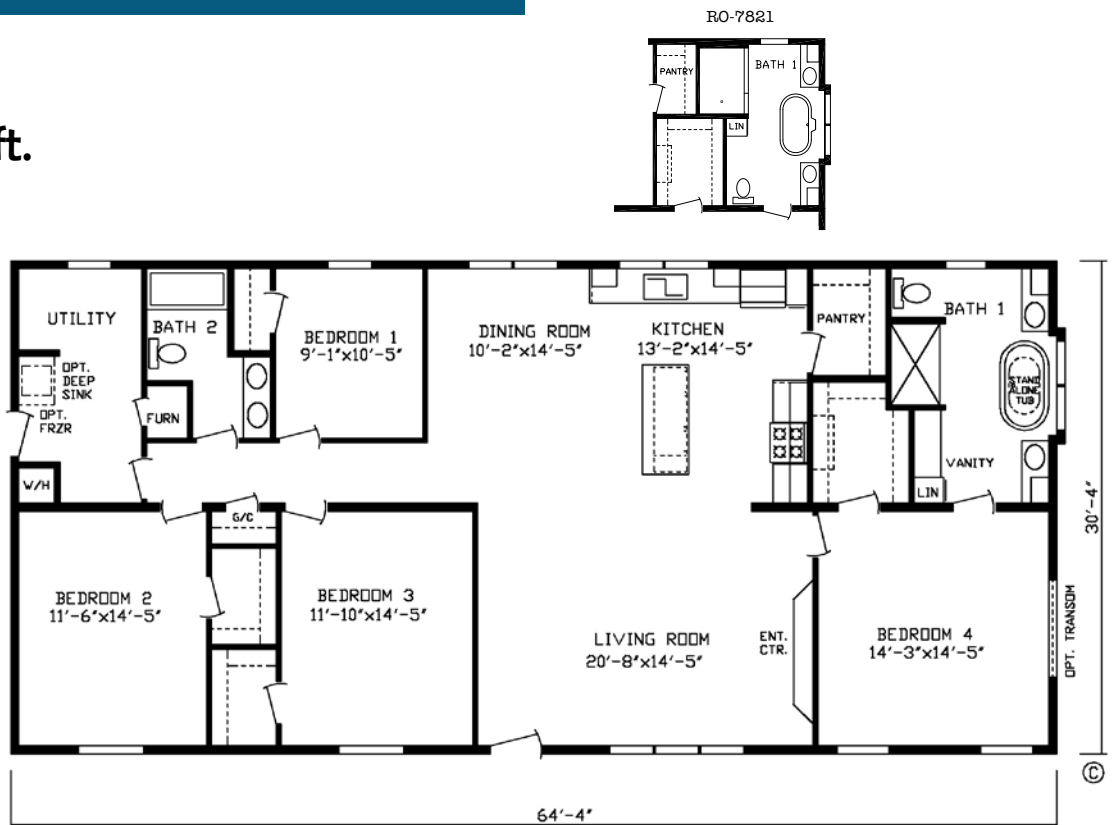
# The Winchester 4 Bedroom

Model #184028

64' x 32' • 1951 sq. ft.

4 Bedroom

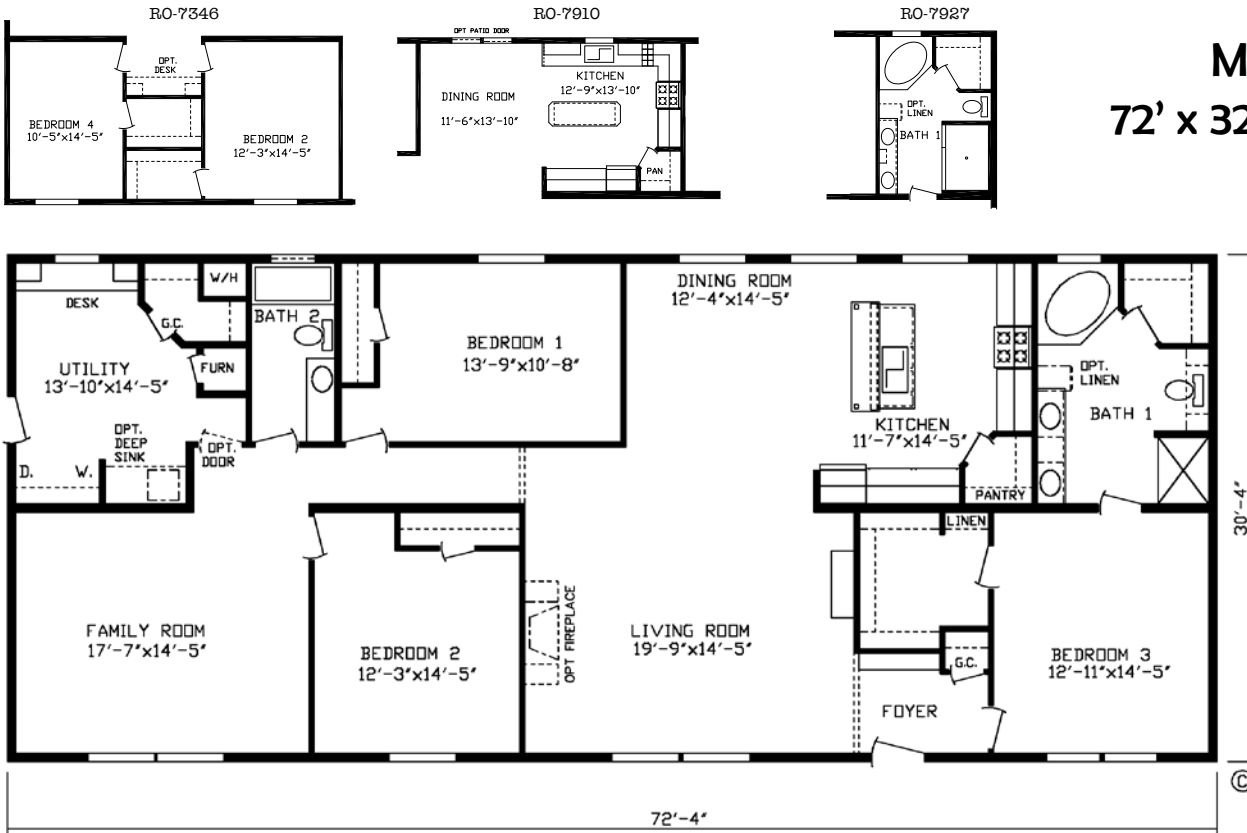
2 Bath



# The Danbury XL

Model #184024  
72' x 32' • 2194 sq. ft.

3 Bedroom  
2 Bath



THE DANBURY LIVING ROOM

**General:**

Recessed Frame  
 Cross-Members/Out-Riggers- 4' O.C.  
 Energy Heel Truss Rafters  
 Energy Truss Rafters – 24" O.C.  
 8' Flat Ceiling  
 Heavy 10" Steel I-Beam Frame - **28'**  
 Heavy 12" Steel I-Beam Frame - **32'**  
 Double Marriage Wall – 6"  
 Transverse Floor Joists – 16" O.C.  
 2X6 Exterior Wall Studs – 16" O.C.  
 2x6 Top Plate  
 Unitized Floor/Wall Construction  
 With Steel Straps – 4' O.C.  
 Glued & Screwed Flooring System  
 Seamless Bottom Underlayment  
 (Nylon Re-Inforced)  
 3/12 Roof Pitch  
 Tongue & Groove OSB Floor Decking

**Furnace:**

Gas furnace w/Electric Ignition  
 Perimeter Heating System  
 Positive Operating System  
 Insulated Heat Ducts  
 In-Floor Cross-over Heat Ducts

**Carpet:**

**Shaw** 15 Oz. Carpet w/Tack Strip  
 5lb Carpet Pad  
**Beauflor** Roll Goods



**Electric:**

100 Amp  
 LED Can Lights  
 Wire & Vent For Dryer  
 Exterior Recept on Sidewall  
 Light At Front & Rear Doors  
 Smoke Alarms

**Plumbing:**

Plumb for Washer  
 Water Shut-Off Valves Thru-out  
 Decorative Water Heater Access  
 30 Gallon Dual Element Electric Water Heater  
 Deep Stainless Steel Kit Sink  
 Metal Faucets  
 High-Arc Kitchen Faucet

**Baths:**

Exhaust Fan w/Light MBA  
 36" High Bath Lavs  
 Fiberglass Tubs  
 Porcelain Bath Lavs  
 Framed Bath Mirrors  
 Fiberglass Shower (Per Print)

**Insulation:**

R-22 Insulation in Floor  
 2 x 6 Sidewalls with R-19  
 R-21 Available  
 R-25 Insulation in Ceiling  
 R-33,44, or 50 Available  
 Foam Gasket at Marriage Line

**Cabinetry:**

Hardwood Cabinet Doors  
 Concealed Hinges on Cabinet Doors  
 Self-Edge Countertop Edge  
 Laminate Backsplash  
 Seamless Countertops  
 Double Shelf Over Refrigerator  
 Shelf in Washer/Dryer Area  
 Center Shelf in Kitchen Base Cabinets  
 Roller Guide Drawer System  
 42" Cabinets in Kitchen  
 Drawer Bank in Kitchen  
 Entertainment Center (Per Print)  
 Paneled Backs of Cabinets

**Décor:**

Textured Ceiling  
 Venetian Blinds Throughout  
 Cornice Boards Window Treatment  
 Decorator Vinyl Over Gypsum  
 Double Shelving in some Closets  
 1/2" Vinyl on Gypsum

**Exterior:**



**Royal** Vinyl Siding w/Sheathing  
 Exterior Accent Treatment  
 Metal Starter Strip w/Vinyl Siding  
 Energy Seal Windbreaker  
**Owens Corning** Oakridge Architectural Shingles  
 Dormer



**Doors:**

3 Hinges on Interior Doors  
 Full Door Stop Molding  
 Brushed Nickel Door Knobs  
 34 x 82 (rough opening) 9 Lite Rear Door W/Storm  
 38 x 82 (rough opening) Decorator Front Door W/Storm  
 Keyed Alike Locksets  
 White 2-Panel Interior Doors  
 Metal Furnace Door

**Windows:**

**Kinro** 60" Vinyl Windows  
 Kinro Heritage Series Optional



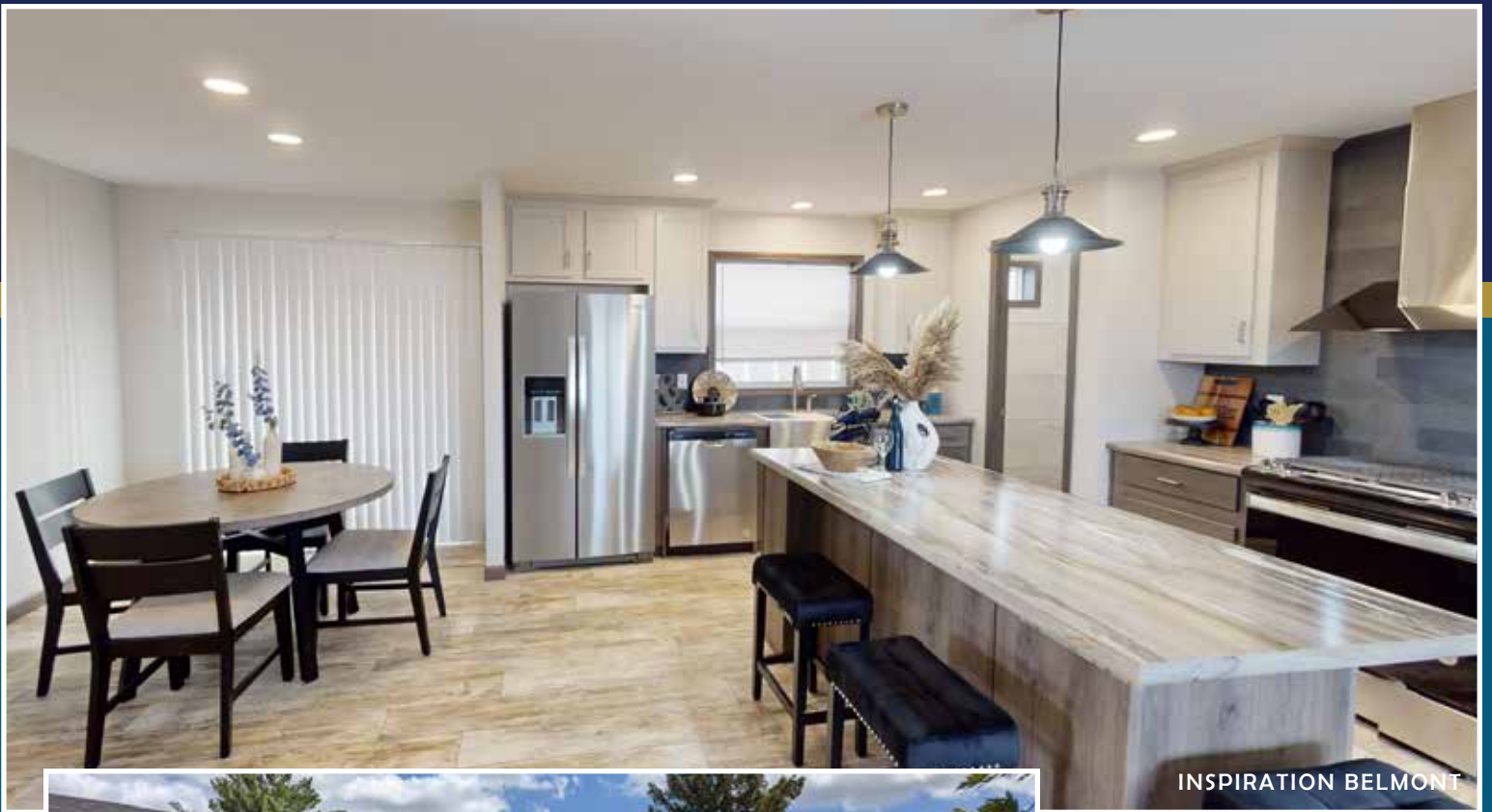
**Appliances:**

18 CF 2-Door Refrigerator  
 30" Gas Range w/Elec. Ignition  
 Linear Stainless Steel Range Hood



\* Friendship Homes prides itself in continuous improvement to ensure the highest quality. Products, standards and specifications are subject to change without notice





INSPIRATION BELMONT

Visit our website for more photos of our homes.

There are many options to choose from for selecting countertops, cabinets, walls, flooring and fixtures to personalize your new home.



INSPIRATION TESLA



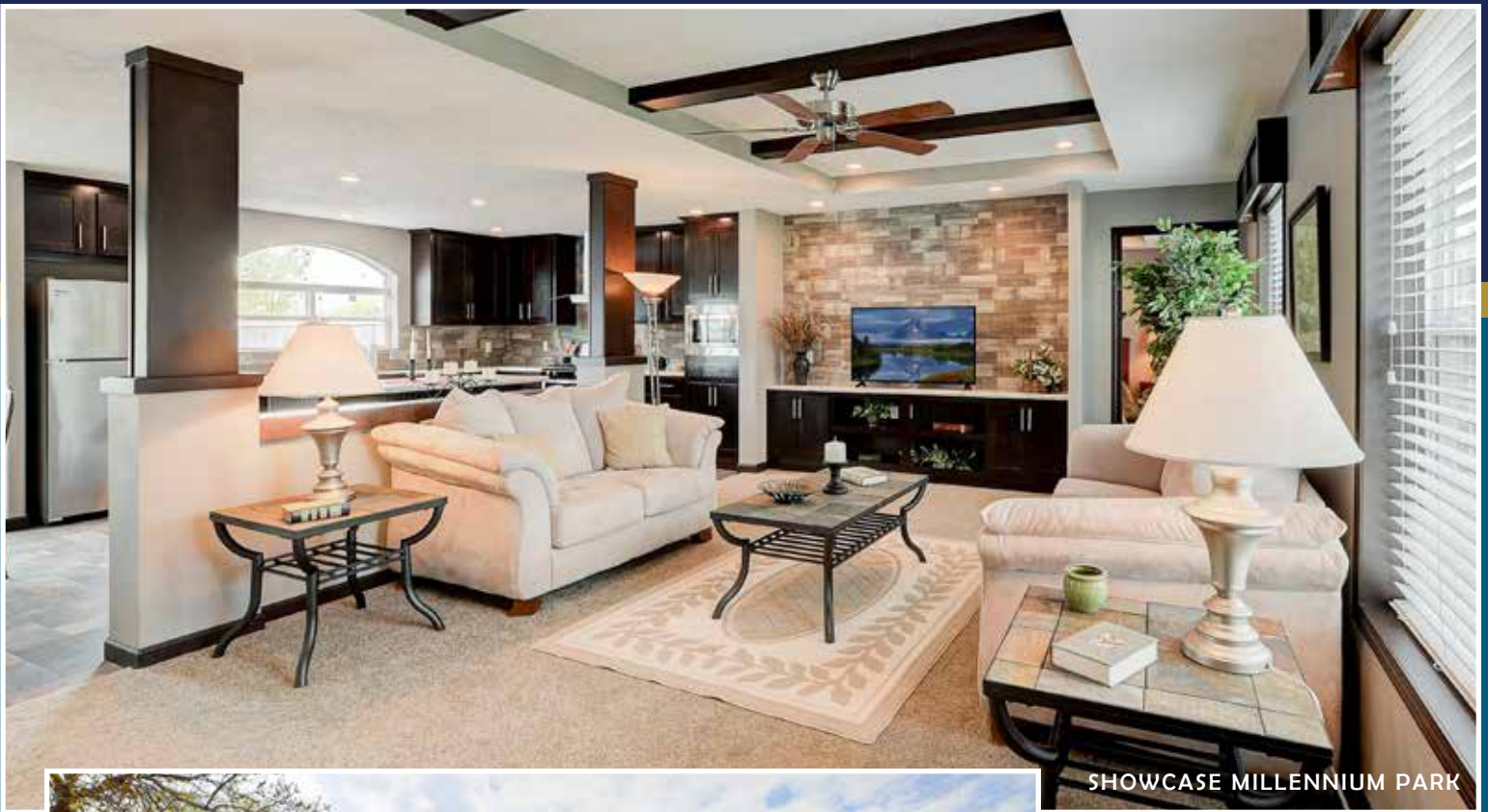
INSPIRATION WINCHESTER



INSPIRATION LANDMARK XXL

# Showcase Sectional





SHOWCASE MILLENNIUM PARK

Visit our website for more photos of our homes.

There are many options to choose from for selecting countertops, cabinets, walls, flooring and fixtures to personalize your new home.



SHOWCASE FOREST HEIGHTS XL



SHOWCASE TIMBER LODGE

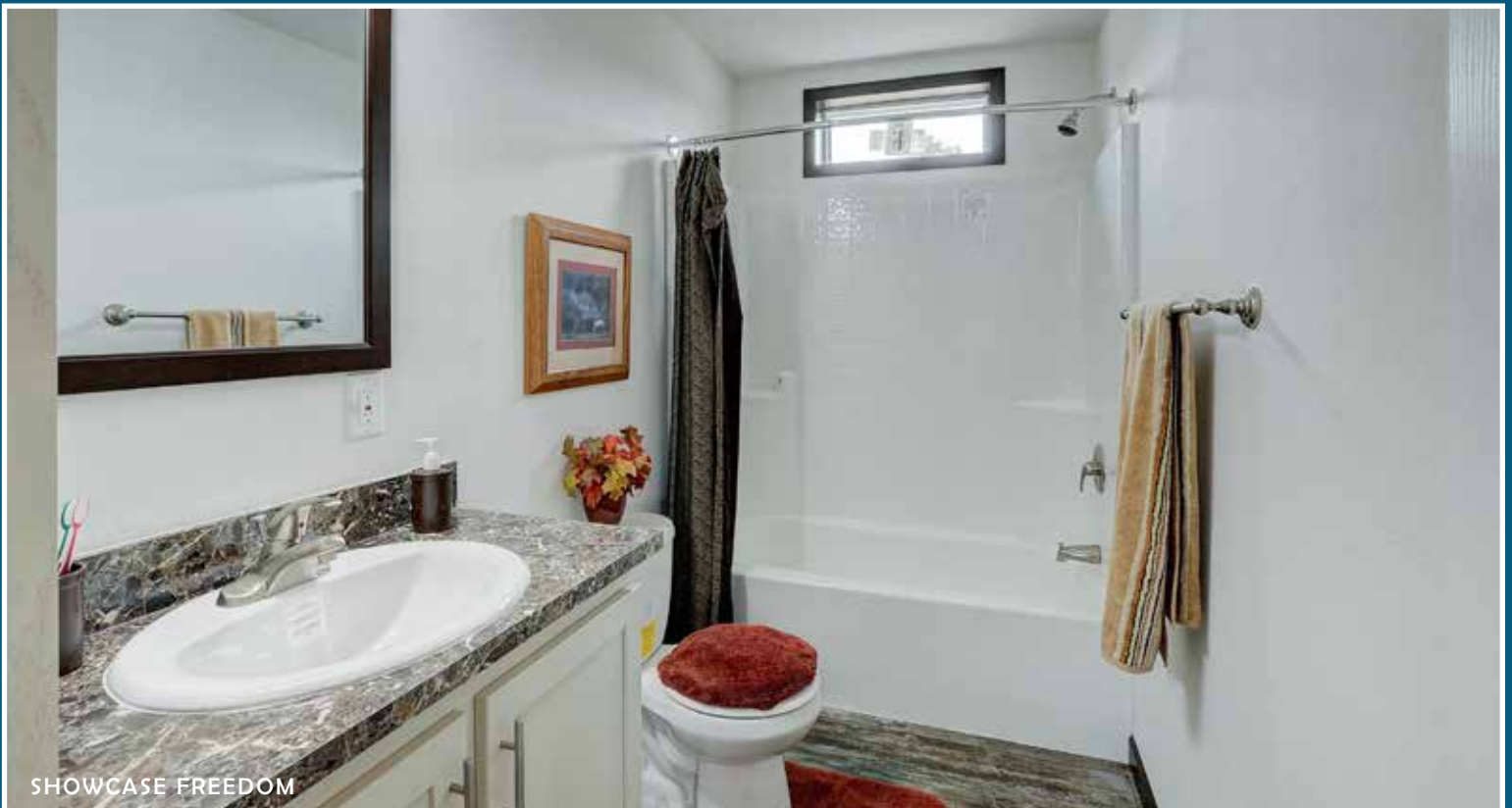


SHOWCASE RED ROCK



Visit our website for more photos of our homes.

There are many options to choose from for selecting countertops, cabinets, walls, flooring and fixtures to personalize your new home.

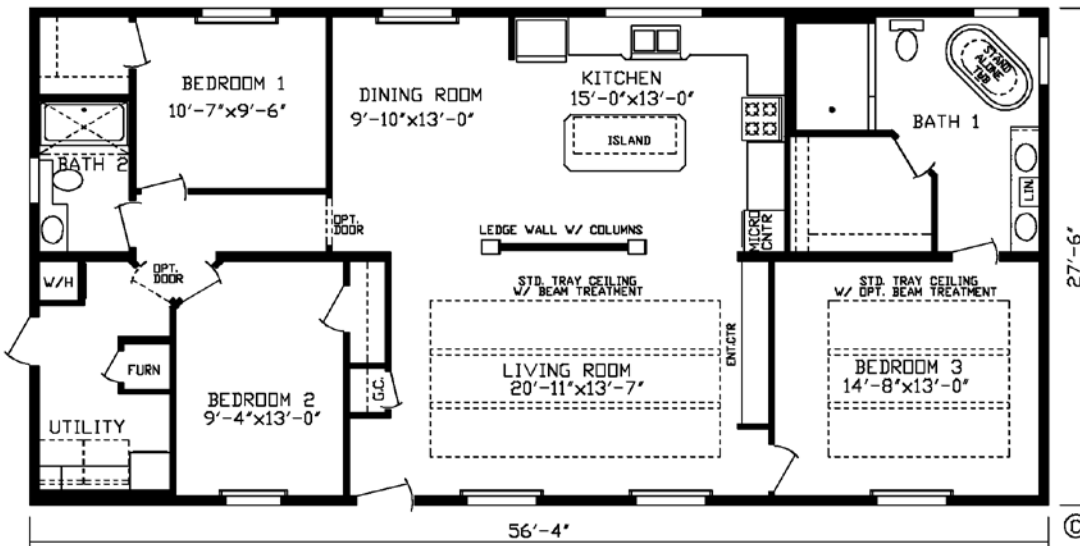


# The Millennium Park

Model #185004

56' x 28' • 1549 sq. ft.

3 Bedroom  
2 Bath

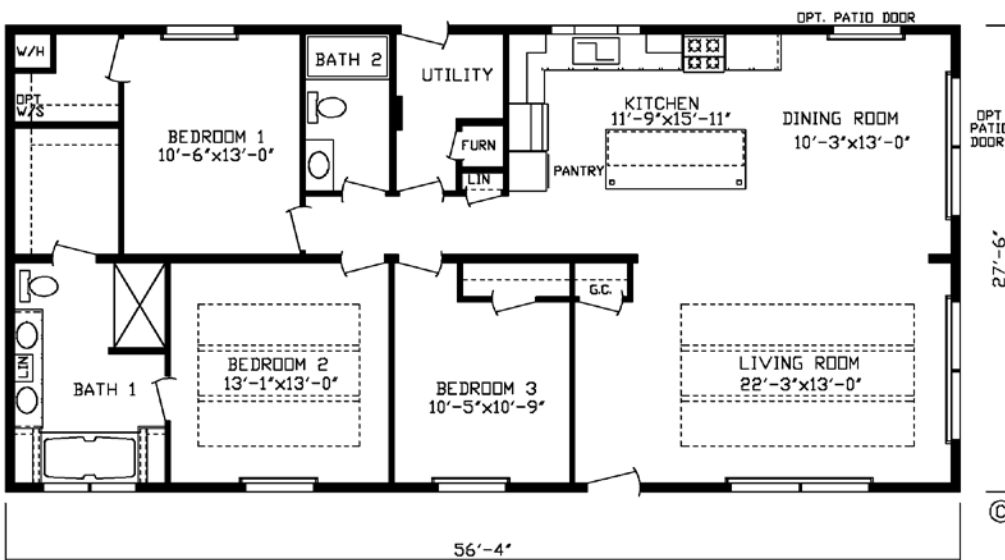


# The Lincoln

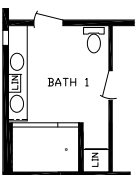
Model #185010

56' x 28' • 1549 sq. ft.

3 Bedroom  
2 Bath



RO-7832

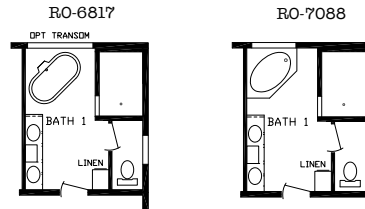
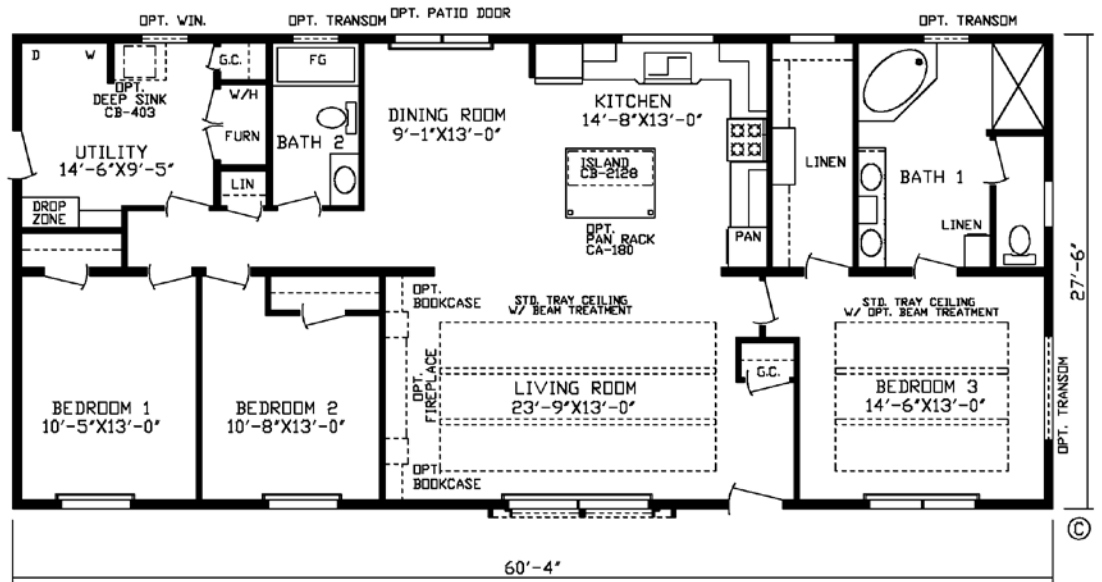


# The Blue Ridge

Model #185005

60' x 28' • 1659 sq. ft.

3 Bedroom  
2 Bath

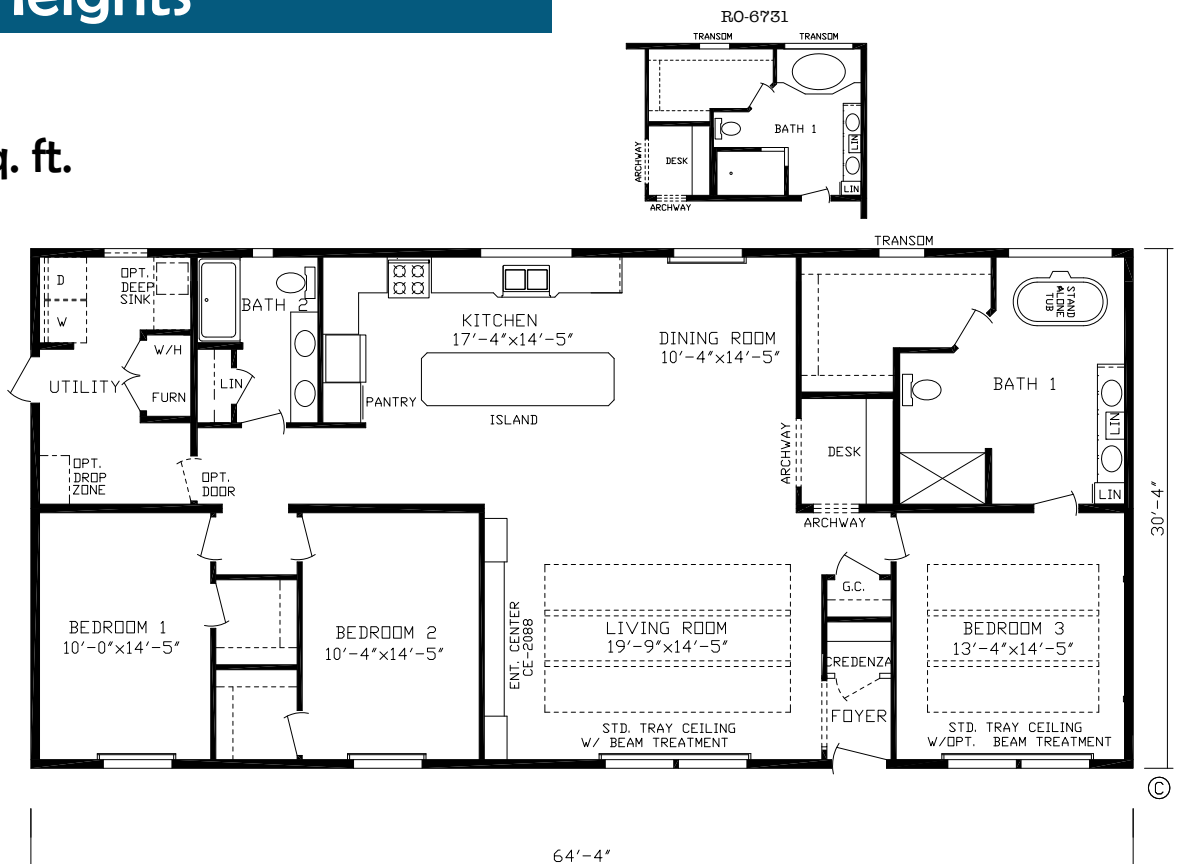


# The Forest Heights

Model #185003

64' x 28' • 1760 sq. ft.

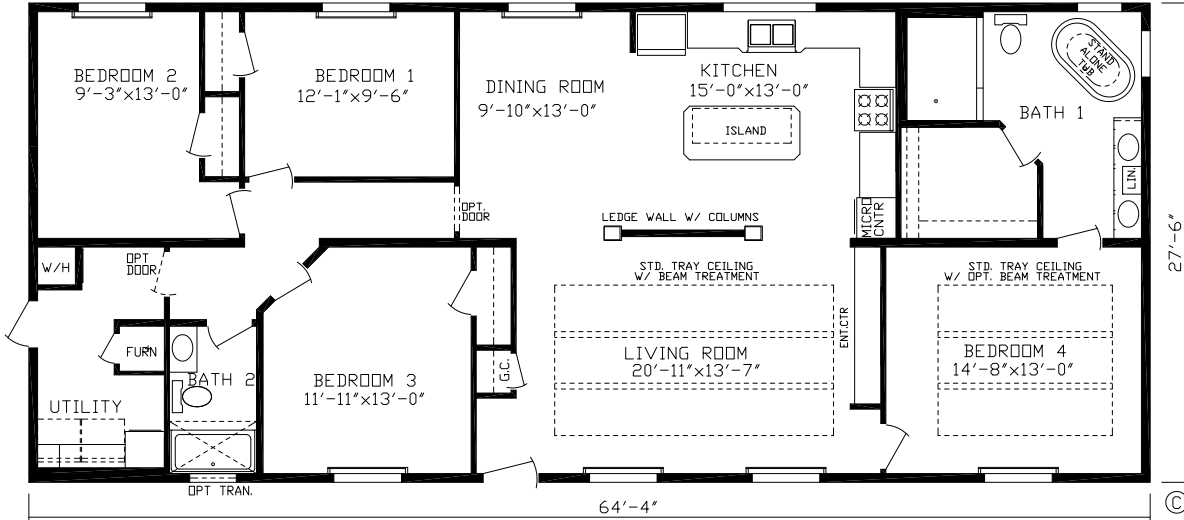
3 Bedroom  
2 Bath



# The Millennium Park XL

Model #185030  
64' x 28' • 1760 sq. ft.

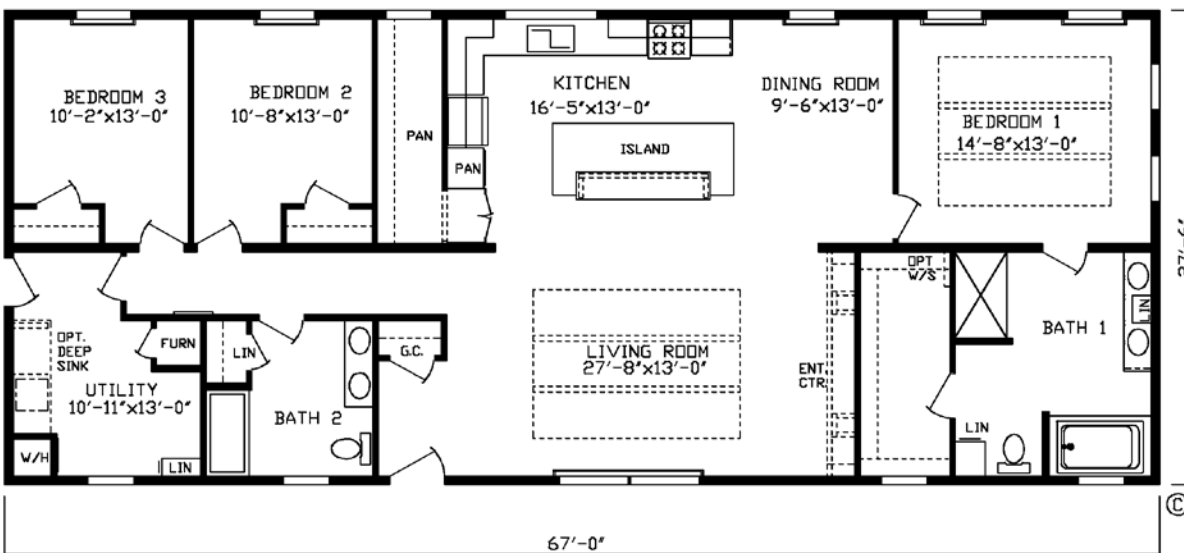
4 Bedroom  
2 Bath



# The Mystic Creek

Model #185029  
67' x 28' • 1843 sq. ft.

3 Bedroom  
2 Bath

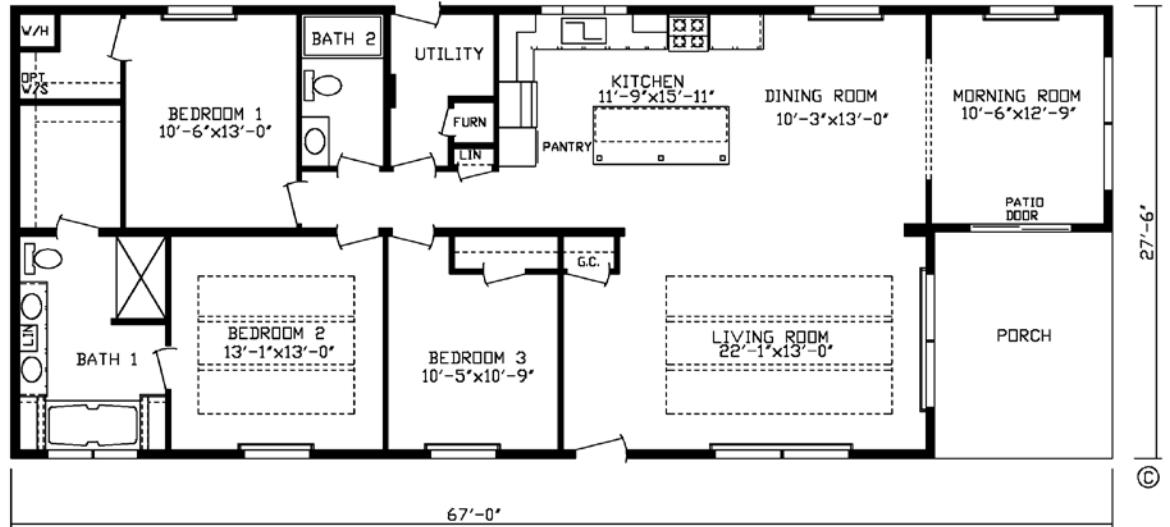


# The Lincoln with Morning Room

Model #185036

67' x 28' • 1694 sq. ft.

3 Bedroom  
2 Bath

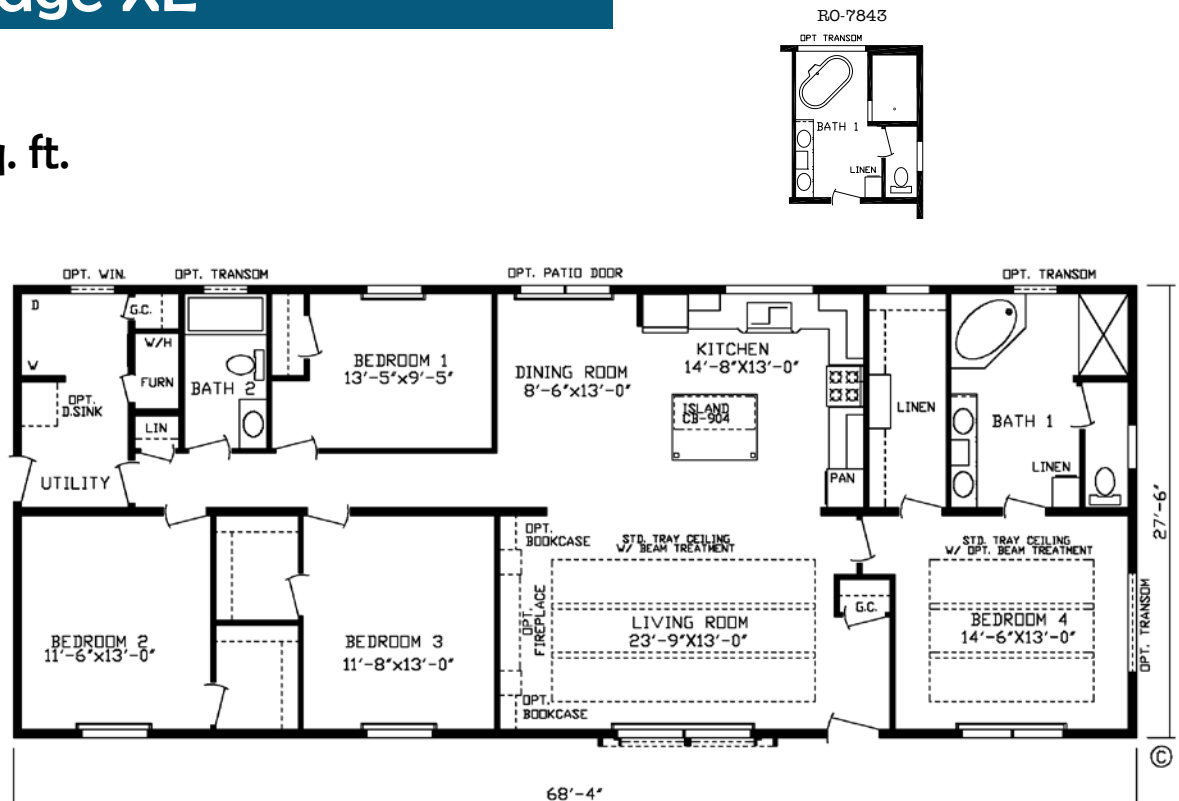


# The Blue Ridge XL

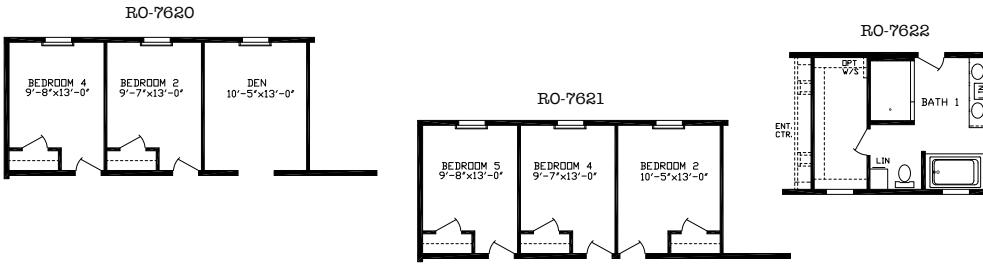
Model #185031

68' x 28' • 1879 sq. ft.

4 Bedroom  
2 Bath

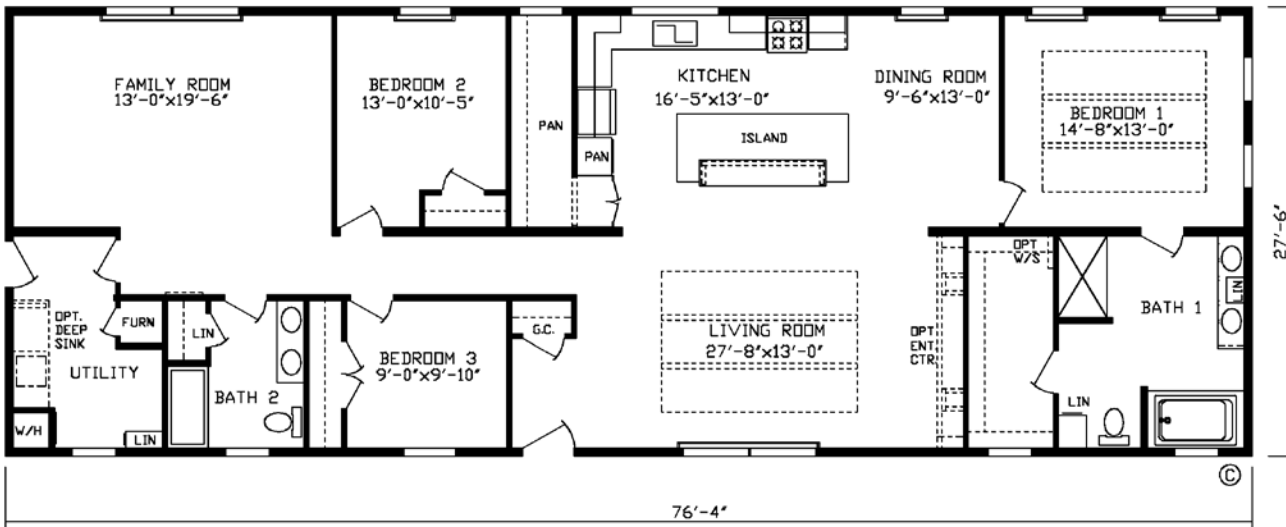


# The Mystic Creek XL

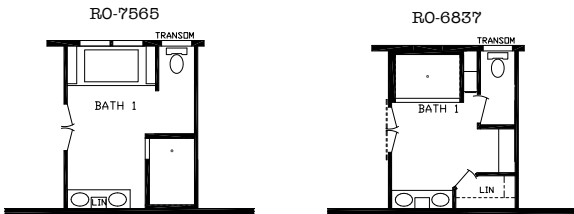


Model #185034  
76' x 28' • 2072 sq. ft.

3 Bedroom  
2 Bath

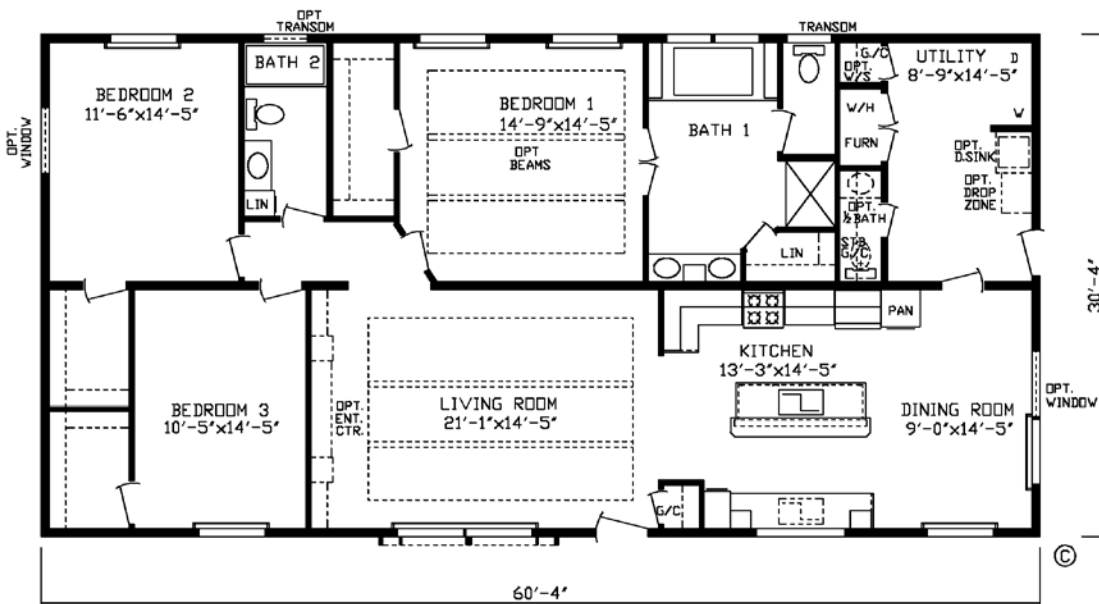


# The Freedom



Model #185011  
60' x 32' • 1830 sq. ft.

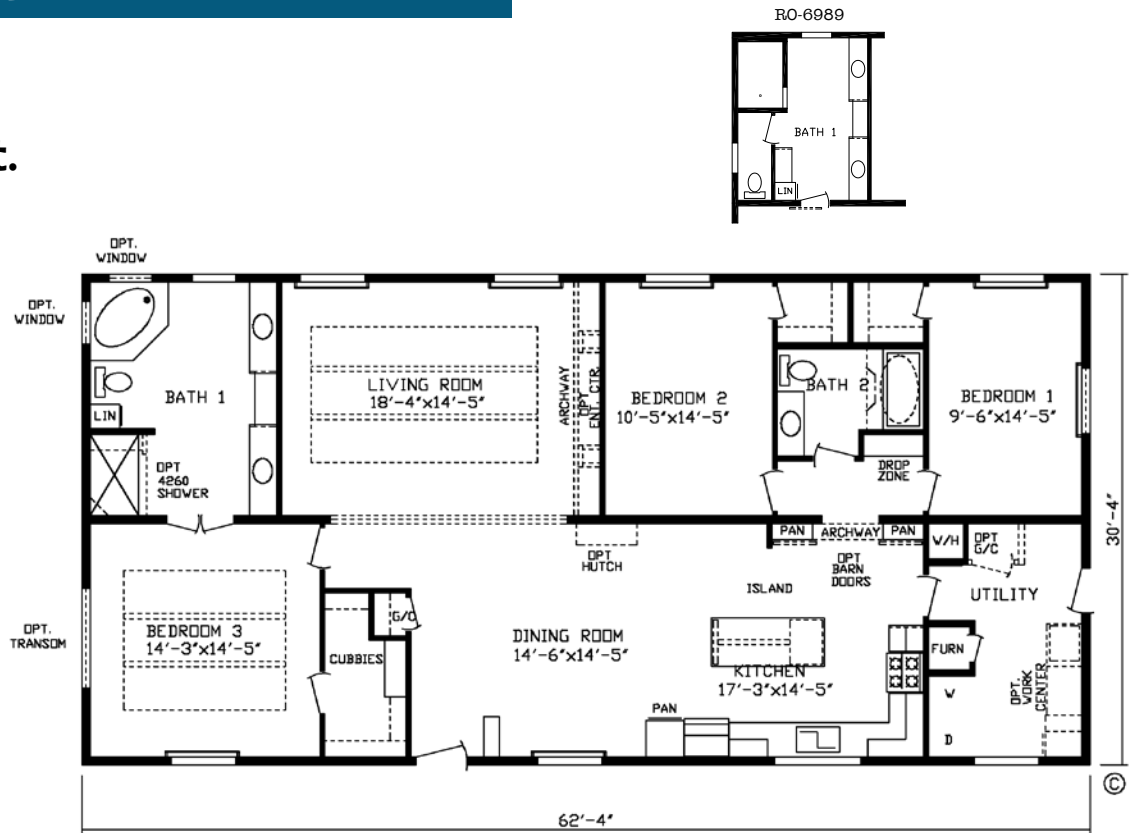
3 Bedroom  
2 Bath



# The Red Rock

Model #185020  
62' x 32' • 1891 sq. ft.

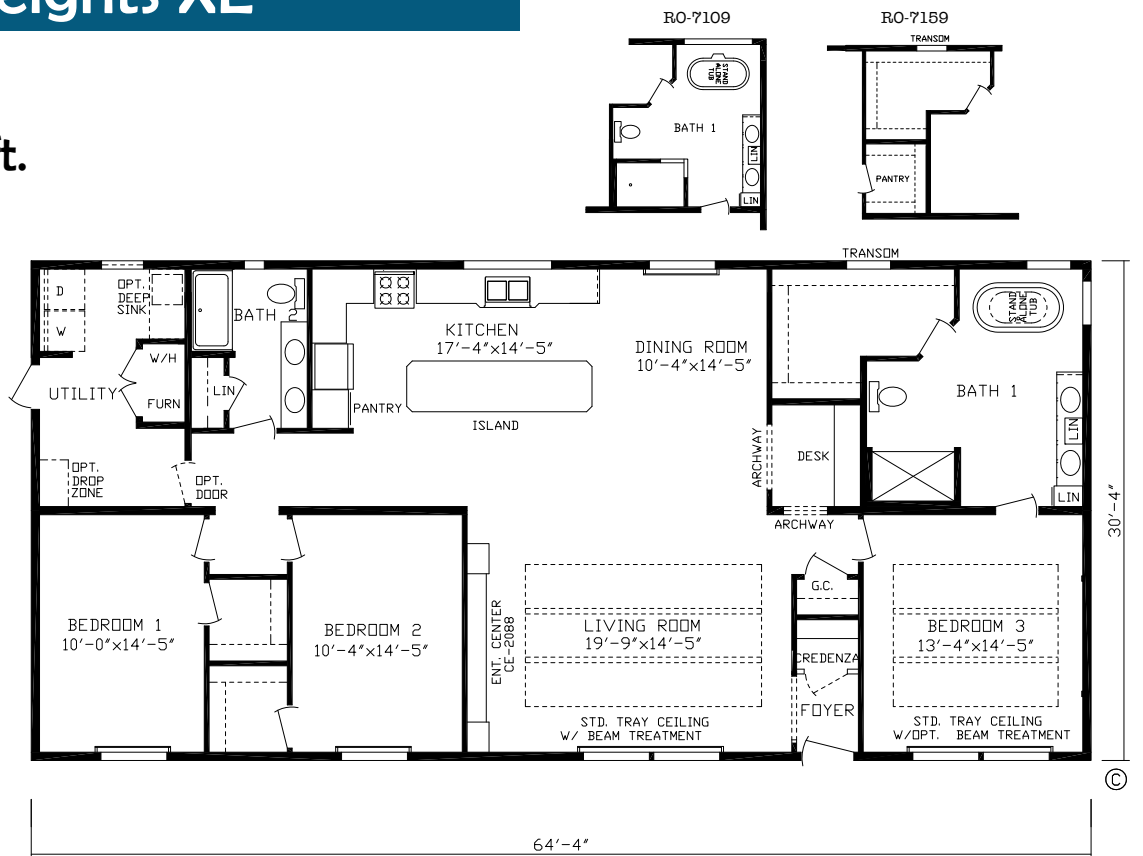
3 Bedroom  
2 Bath



# The Forest Heights XL

Model #185006  
64' x 32' • 1951 sq. ft.

3 Bedroom  
2 Bath



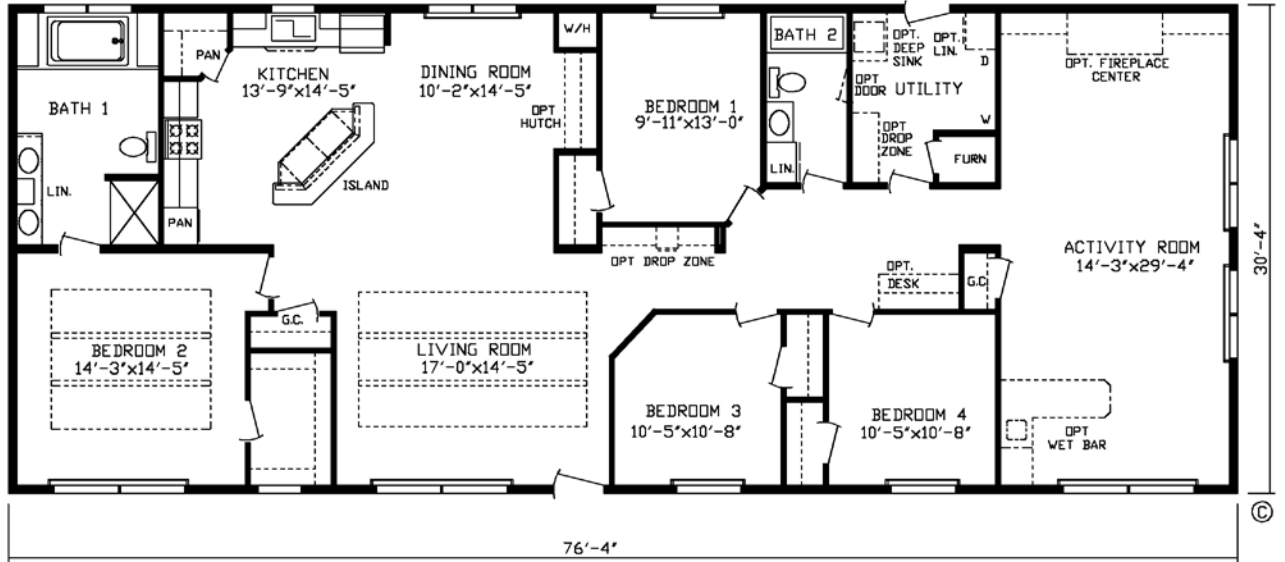


# The Timber Lodge Flat

Model #185019

76' x 32' • 2315 sq. ft.

4 Bedroom  
2 Bath

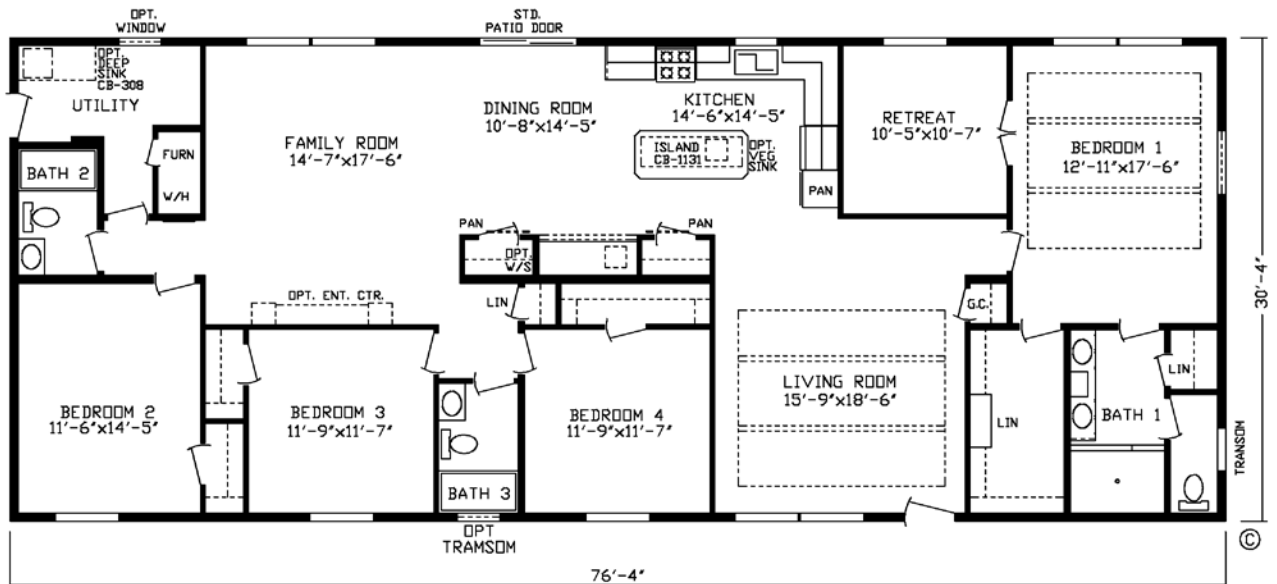


# The Durango

Model #185035

76' x 32' • 2315 sq. ft.

4 Bedroom  
2 Bath



# Showcase Sectional Standards

## General:

Recessed Frame  
 Cross-Members/Out-Riggers- 4' O.C.  
 Energy Heel Truss Rafters  
 Energy Truss Rafters – 24" O.C.  
 8' Flat Ceiling  
 Heavy 10" Steel I-Beam Frame - **28'**  
 Heavy 12" Steel I-Beam Frame - **32'**  
 Double Marriage Wall – 6"  
 Transverse Floor Joists – 16" O.C.  
 2X6 Exterior Wall Studs – 16" O.C.  
 In Floor Cross-Over Heat Ducts  
 Unitized Floor/Wall Construction  
 With Steel Straps – 4' O.C.  
 Glued & Screwed Flooring System  
 Seamless Bottom Underlayment  
 (Nylon Re-Inforced)  
 3/12 Roof Pitch  
 Tongue & Groove OSB Floor Decking

## Furnace:

Gas furnace w/Electric Ignition  
 Perimeter Heating  
 Positive Operating System  
 Insulated Heat Ducts

## Carpet:

**Shaw** 15 oz. Carpet w/Tack Strip  
 5lb Carpet Pad  
**Beauflor** Roll Goods



## Electric:

100 Amp  
 LED Can Lights  
 Wire & Vent For Dryer  
 Exterior Recept on Sidewall  
 Light At Front & Rear Doors  
 Smoke Alarms

## Plumbing:

Plumb for Washer  
 40 Gallon Dual Element  
 Electric Water Heater  
 Decorative Water Heater Access  
 Water Shut-off Valves Thru-out  
 Stainless Steel Farmers Sink-Kitchen  
 Metal Faucets  
 Hi-Arc Kitchen Faucet

## Baths:

Exhaust Fan w/Light MBA  
 36" High Bath Lavs  
 Fiberglass Tubs  
 Porcelain Bath Lavs  
 Framed Bath Mirrors

## Insulation:

R-22 Insulation in Floor  
 2 x 6 Sidewalls with R-19  
 R-21 Available  
 R-25 Insulation in Ceiling  
 R-33,44, or 50 Available  
 Foam Gasket at Marriage Line

## Cabinetry:

Hardwood Cabinet Doors  
 Hardwood Stiles w/Concealed Hinges  
 Self-Edge Countertop Edge  
 Seamless Countertops  
 Cabinet Over Refrigerator  
 Shelf in Washer/Dryer Area  
 Center Shelf in Kitchen Cabinets  
 Roller Guide Drawer System  
 42" Cabinets in Kitchen  
 Drawer Bank in Kitchen  
 Entertainment Center (Per Print)  
 Drawers Above Cabinet Doors  
 Full Wall Backsplash in Kitchen  
 Paneled Backs on Cabinets  
 Laminate Backsplash in Baths

## Décor:

Textured Ceiling  
 Venetian Blinds Throughout  
 Cornice Boards Window Treatment  
 Tape & Textured Walls  
 Double Shelving in MBR Closet  
 Tray Ceiling w/Beams in Liv Rm  
 Tray Ceiling in MBR  
 Wire Shelving in Closets  
 2 Can Lights in Din Rm

## Exterior:

**Royal** Double 4 Dutch Lap Vinyl Siding  
 7/16 OSB Exterior Sheathing  
 Exterior Accent Treatment  
 Lineals on DS  
 Energy Seal Windbreaker  
**Owens Corning** Oakridge Architectural Shingles  
 Dormer



## Doors:

3 Hinges on Interior Doors  
 Full Door Stop Molding  
 Brushed Nickel Door Knobs  
 34 x 82 (rough opening) 9 Lite Rear Door W/Larson Storm  
 38 x 82 (rough opening) Decorator Front Door W/Larson Storm  
 Keyed Alike Locksets  
 White 2-Panel Interior Doors  
 Metal Furnace Door

## Windows:

**Kinro** 72" Vinyl Windows  
 Kinro Heritage Series Optional



## Appliances:

18 CF 2-Door Refrigerator  
 30" Gas Range w/Elec. Ignition  
 Stainless Steel Linear Range Hood



\* Friendship Homes prides itself in continuous improvement to ensure the highest quality. Products, standards and specifications are subject to change without notice





SHOWCASE DURANGO

Visit our website for more photos of our homes.

There are many options to choose from for selecting countertops, cabinets, walls, flooring and fixtures to personalize your new home.



SHOWCASE MILLENIUM PARK



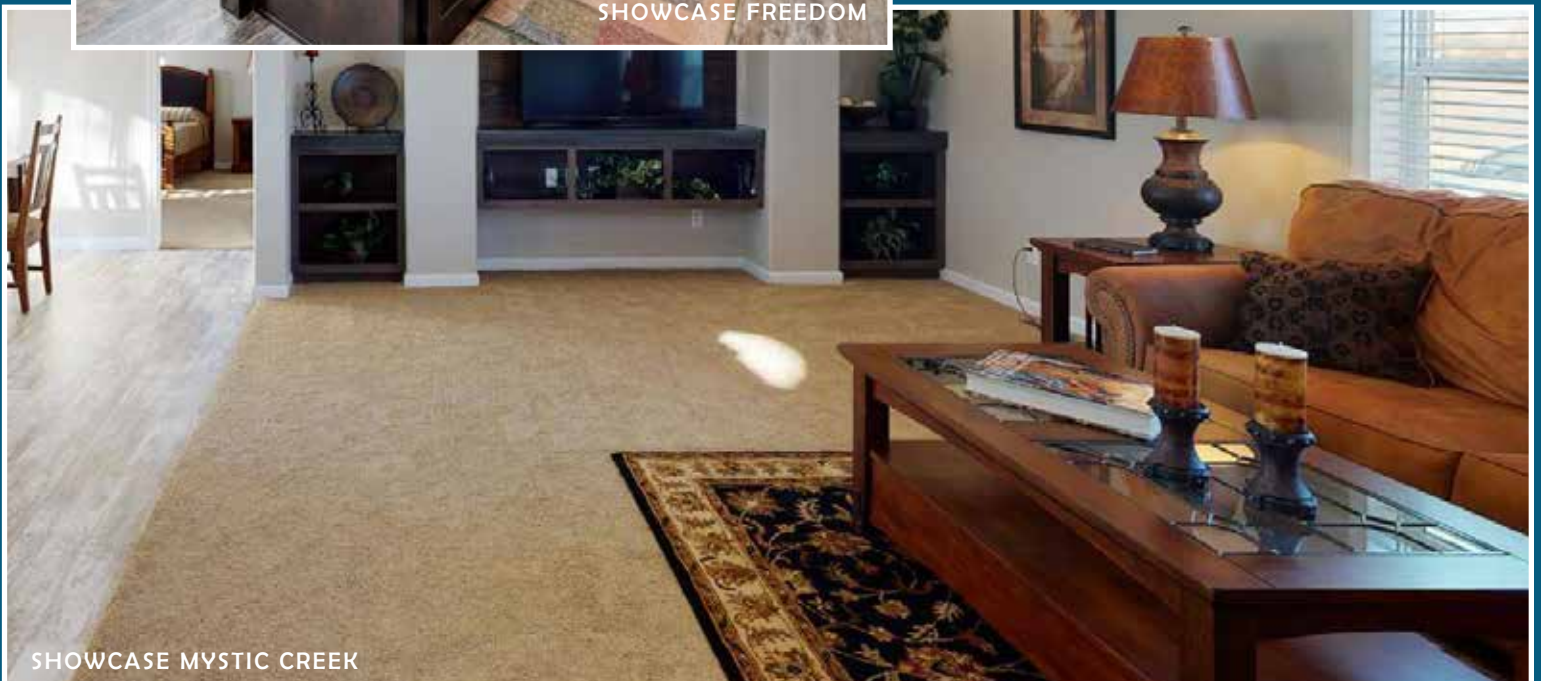
SHOWCASE LINCOLN



SHOWCASE FREEDOM

Visit our website for more photos of our homes.

There are many options to choose from for selecting countertops, cabinets, walls, flooring and fixtures to personalize your new home.



SHOWCASE MYSTIC CREEK



*Friendship*  
HOMES



[www.friendshiphomesmn.com](http://www.friendshiphomesmn.com)