



# FARMHOUSE V



Exterior Shown with Standard 12/12 Roof Pitch  
Shown with Porch and Optional Exterior Features

These are artist renditions for sales purposes only. Refer to working drawings for actual dimensions.  
© 2025 Cavco Martinsville, Inc./Nationwide Series. All Rights Reserved.



Similar Option:  
**BLUE RIDGE**



Similar Option:  
**FARMHOUSE III CAPE**



Similar Option:  
**GRANDVIEW III**

**NATIONWIDE**  
SERIES

UP TO  
SQ. FT.  
2,250

BEDS  
3

BATHS  
2.5

STORIES  
1.5

WIDTH  
48'0"

DEPTH  
27'8"

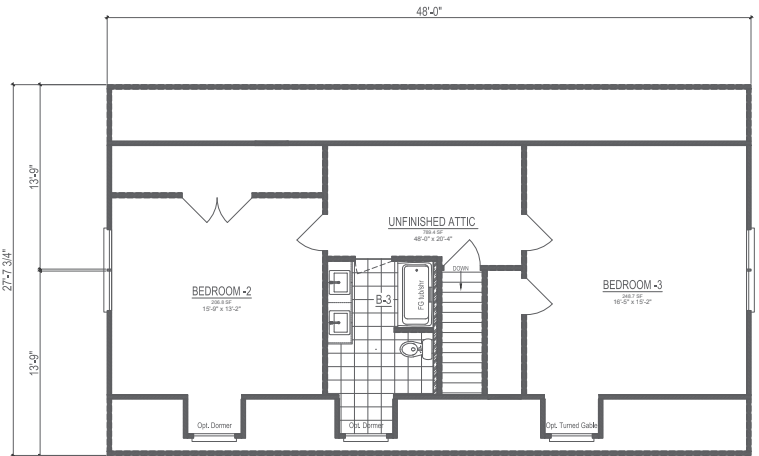
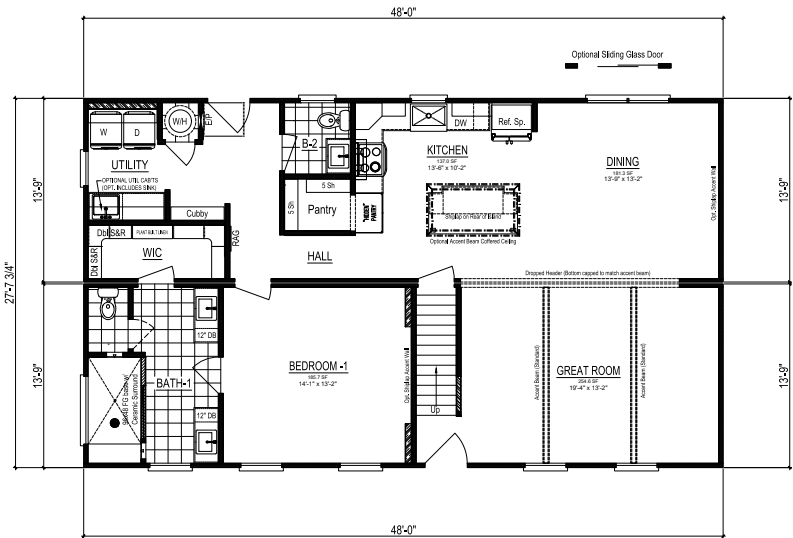
## FLOOR PLAN FEATURES

Open-Concept  
Expansive Mudroom  
Generous Secondary Bedrooms

Built-in Cubby & Bench  
Expanded Kitchen Island  
Walk-in Kitchen Pantry

4x8' Luxury Ceramic Shower  
Primary Walk-in Closet  
Dual Primary Vanities

# FARMHOUSE V



*Suggested Upstairs Layout if Finished\**

First Floor: 1,327 Sq. Ft. Finished | Second Floor: 923 Sq. Ft. Unfinished | **Total Potential Square Footage: 2,250**

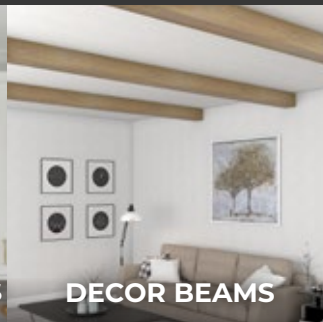
## CUSTOMIZE YOUR HOME



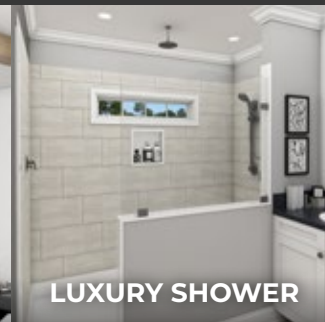
HIDDEN PANTRY



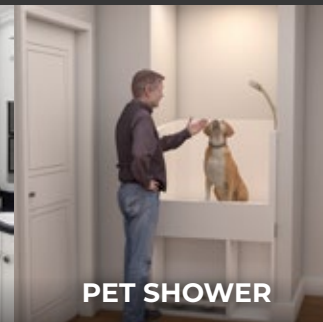
CUSTOM RANGEHOODS



DECOR BEAMS



LUXURY SHOWER



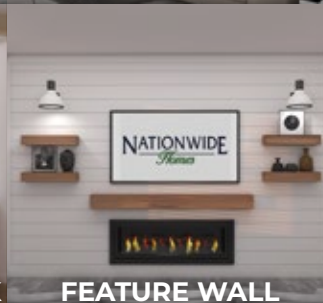
PET SHOWER



WOODEN PANTRY



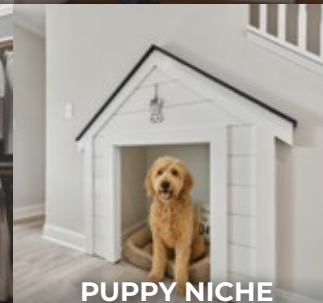
TRIPLE WINDOW SINK



FEATURE WALL



WOODEN RACKS



PUPPY NICHE