



PRESTIGE

Colony Beacon



Floorplan *Literature*



Introduction

ABOUT BEACON PRESTIGE

Discover homes designed for exceptional value – where modern style meets a unique look and thoughtful design.

Each home showcases a family of versatile floorplans tailored to fit your lifestyle, blending comfort, character, and contemporary living.

Table of Contents

Pg	Name	Model	Size	Sq. Ft.	Pg	Name	Model	Size	Sq. Ft.
<i>Single Section</i>					<i>Family 1</i>				
4	Biloxi Light	BP14562A	1456	747	10	White Shoal	BP28483C	2848	1280
4	Juniper Island	BP14602A	1460	800	11	White Shoal Photos			
5	Fire Island	BP14643A	1464	853	12	Port Clinton	BP28563A	2856	1493
5	Cape Vincent	BP14663A	1466	880	13	Marblehead	BP28724A	2872	1920
6	Cape Charles	BP14682A	1468	907	14	Baileys Harbor	BP28644A	2864	1707
6	Presque Isle	BP14682B	1468	907	15	Baileys Harbor Photos			
7	Erie Harbor	BP14683A	1468	907	<i>Additional plans</i>				
7	Cherry Island	BP14723B	1472	960	16	Warrior Rock	BP28443A	2844	1173
8	Cape Hatteras	BP14763A	1476	1013	17	Cedar Key	BP28483B	2848	1280
8	Grosse Point	BP14763B	1476	1013	17	Cedar Key Photos			
9	Grosse Point Photos				18	Amelia Island	BP28603B	2860	1600
					19	Amelia Island Photos			
					20	Cape Henry	BP28523B	2852	1387
					21	Boon Island	BP28684A	2868	1813
					22	Poplar Point	BP28764A	2876	2027
					23	Standard Features			

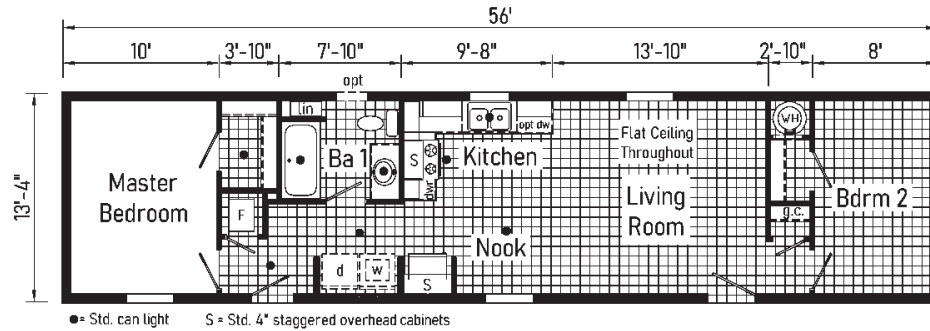


APPROX. 747 SQ. FT.

PRESTIGE

Biloxi Light - BP14562A

(DS1007P)



● = Std. can light S = Std. 4" staggered overhead cabinets

Single Section

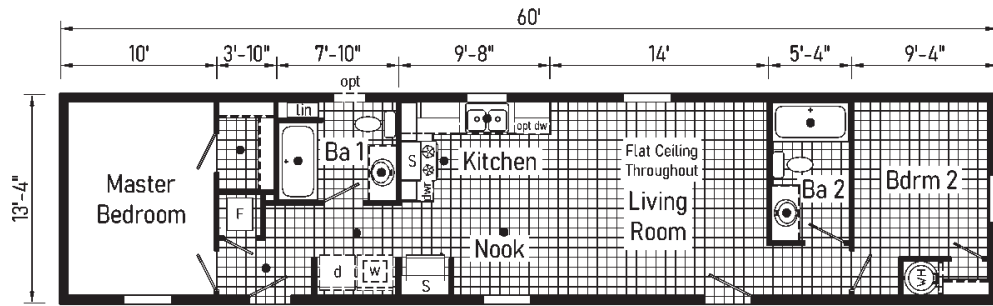
04

Juniper Island - BP14602A

(DS1008P)



APPROX. 800 SQ. FT.



● = Std. can light S = Std. 4" staggered overhead cabinets



APPROX. 853 SQ. FT.

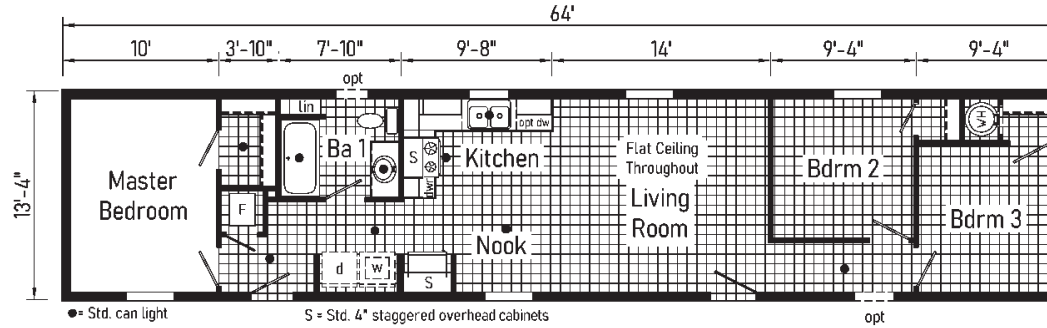
PRESTIGE

Fire Island - BP14643A

(DS1009P)

Single Section

05

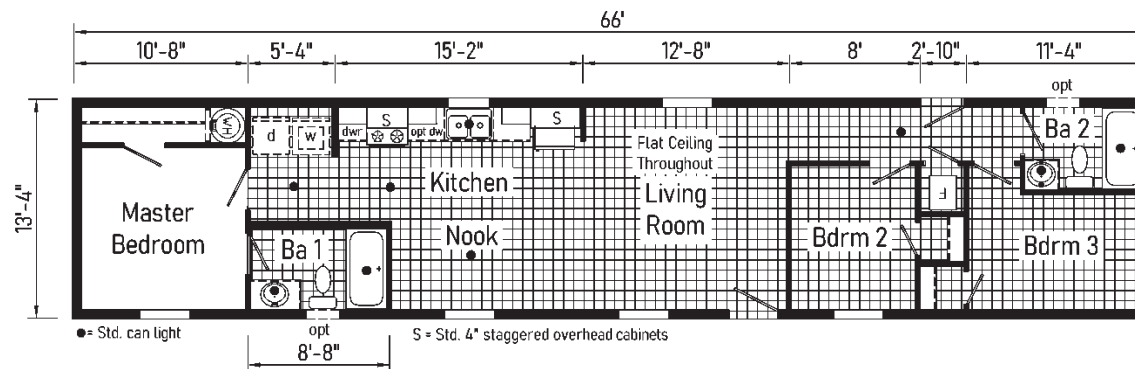


Cape Vincent - BP14663A

(DS1014P)



APPROX. 880 SQ. FT.





APPROX. 907 SQ. FT.

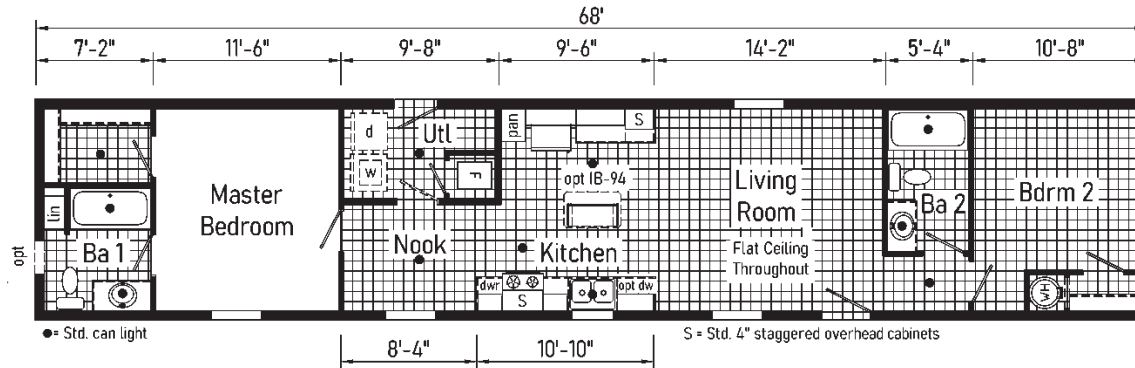
PRESTIGE

Cape Charles - BP14682A

(DS1001P)

Single Section

6



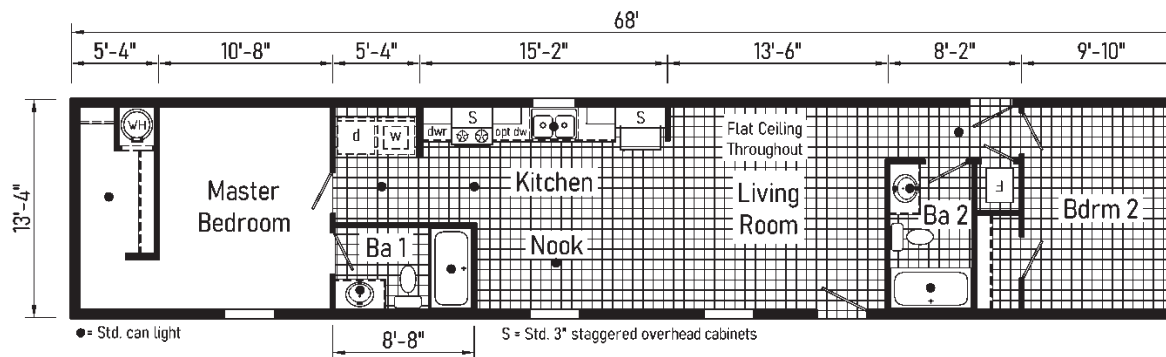
Scan to Watch Video!

Presque Isle - BP14682B

(DS1003P)



APPROX. 907 SQ. FT.



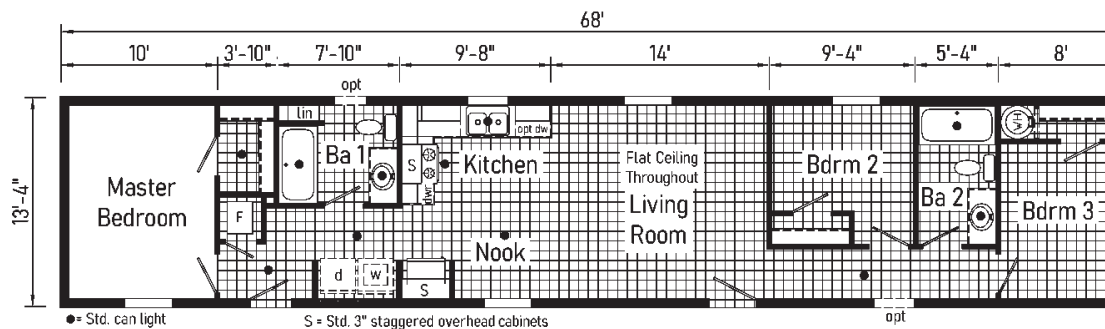


APPROX. 907 SQ. FT.

PRESTIGE

Erie Harbor - BP14683A

(DS1010P)



Single Section

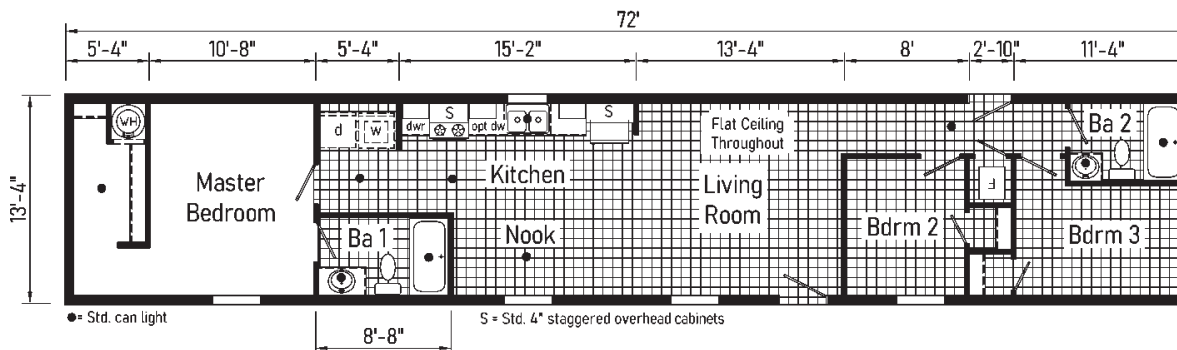


Cherry Island - BP14723B

(DS1005P)



APPROX. 960 SQ. FT.



3



2



Cape Hatteras - BP14763A

(DS1002P)

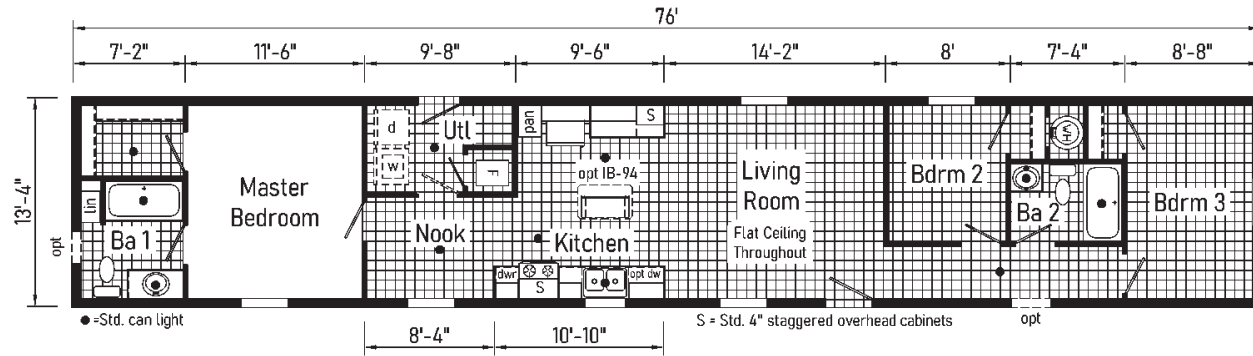
Single Section

08



14' X 76'

APPROX. 1013 SQ. FT.



Grosse Point - BP14763B

3

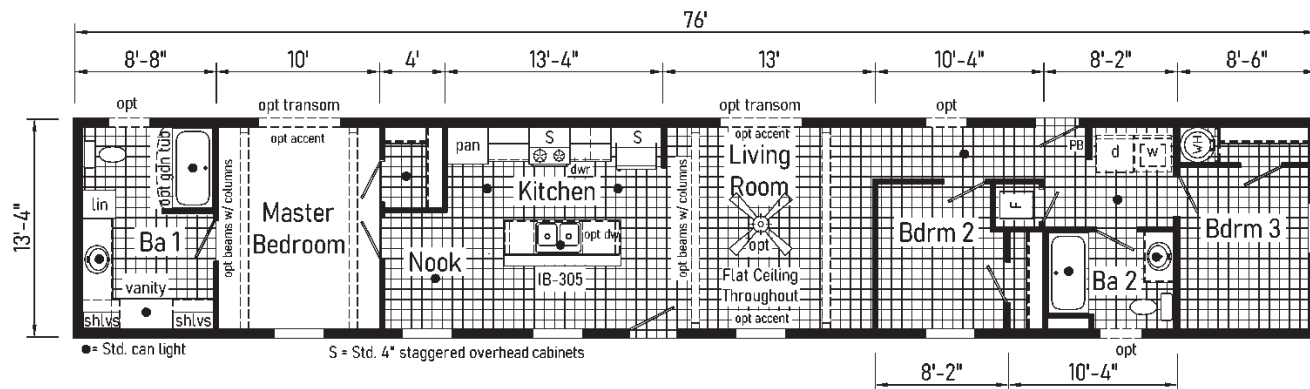


2



14' X 76'

APPROX. 1013 SQ. FT.



PRESTIGE



Scan to Watch Video!

09



GROSSE POINT PHOTOS



*Please use pictures for floorplan vision only. Decors and materials used are constantly changed and improved.

3



2



White Shoal - BP28483C

(DT1037P)

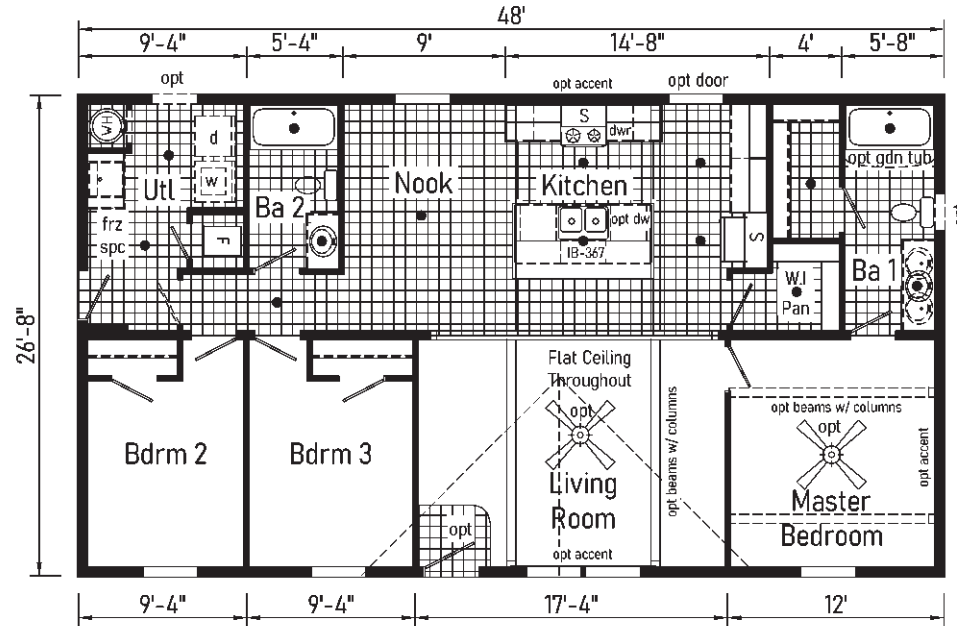
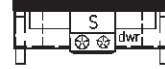


28' X 48'

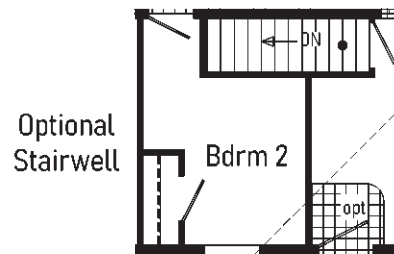
APPROX. 1280 SQ. FT.

PRESTIGE

Overhead Cabinets with Opt Beams & Columns



Optional Walk-Thru Pantry Cabinet



Optional Stairwell

● = Std. can light
S = Std. 4" staggered overhead cabinets
Note: Staggered cabinet over refrigerator becomes non-staggered with optional walk-thru pantry cabinet



Scan to Watch Video!



WHITE SHOAL PHOTOS



*Please use pictures for floorplan vision only. Decors and materials used are constantly changed and improved.

3



2



Family 1

12

Port Clinton - BP28563A

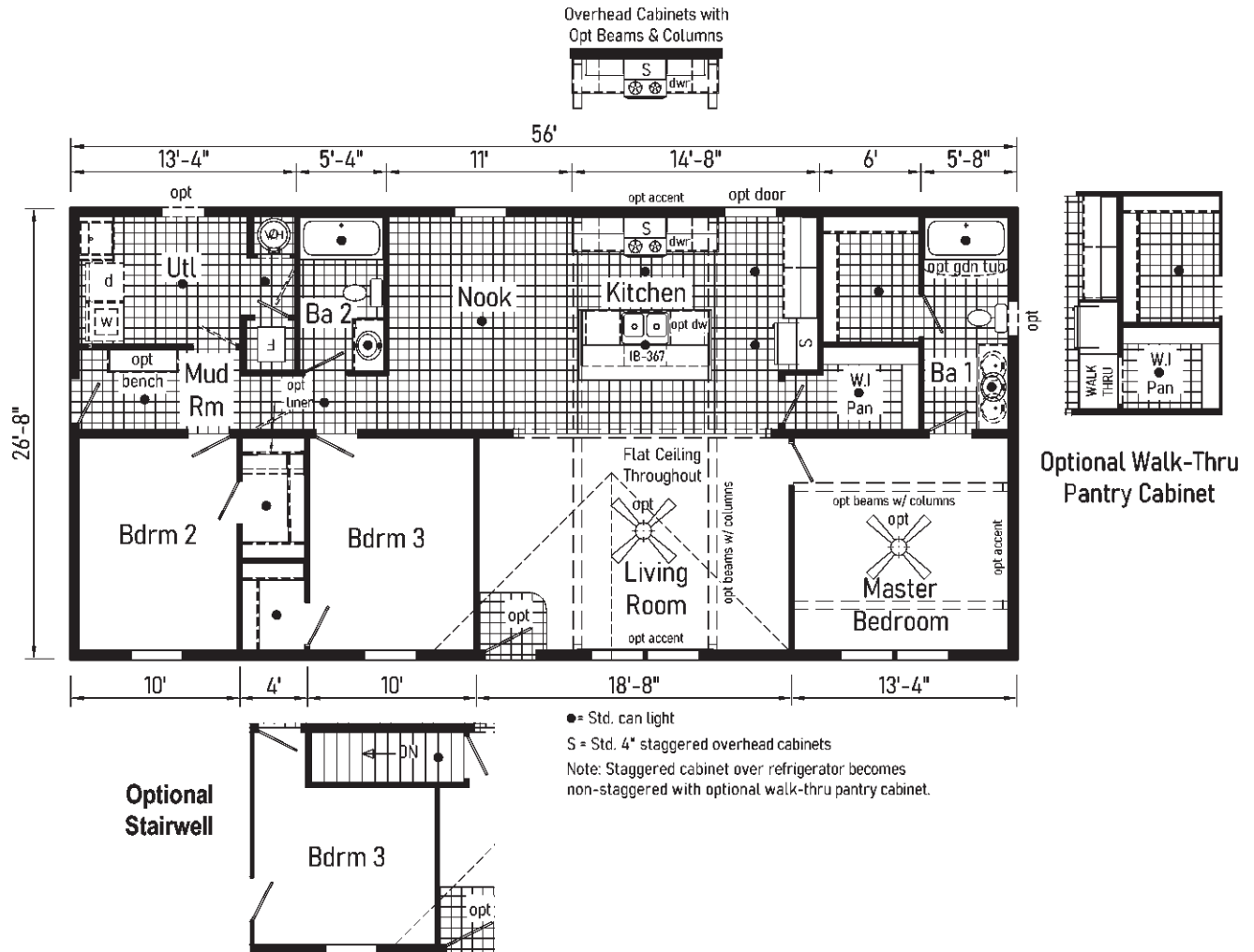
(DT1038P)



28' X 56'

APPROX. 1493 SQ. FT.

PRESTIGE



4



2



Family 1

13

Marblehead - BP28724A

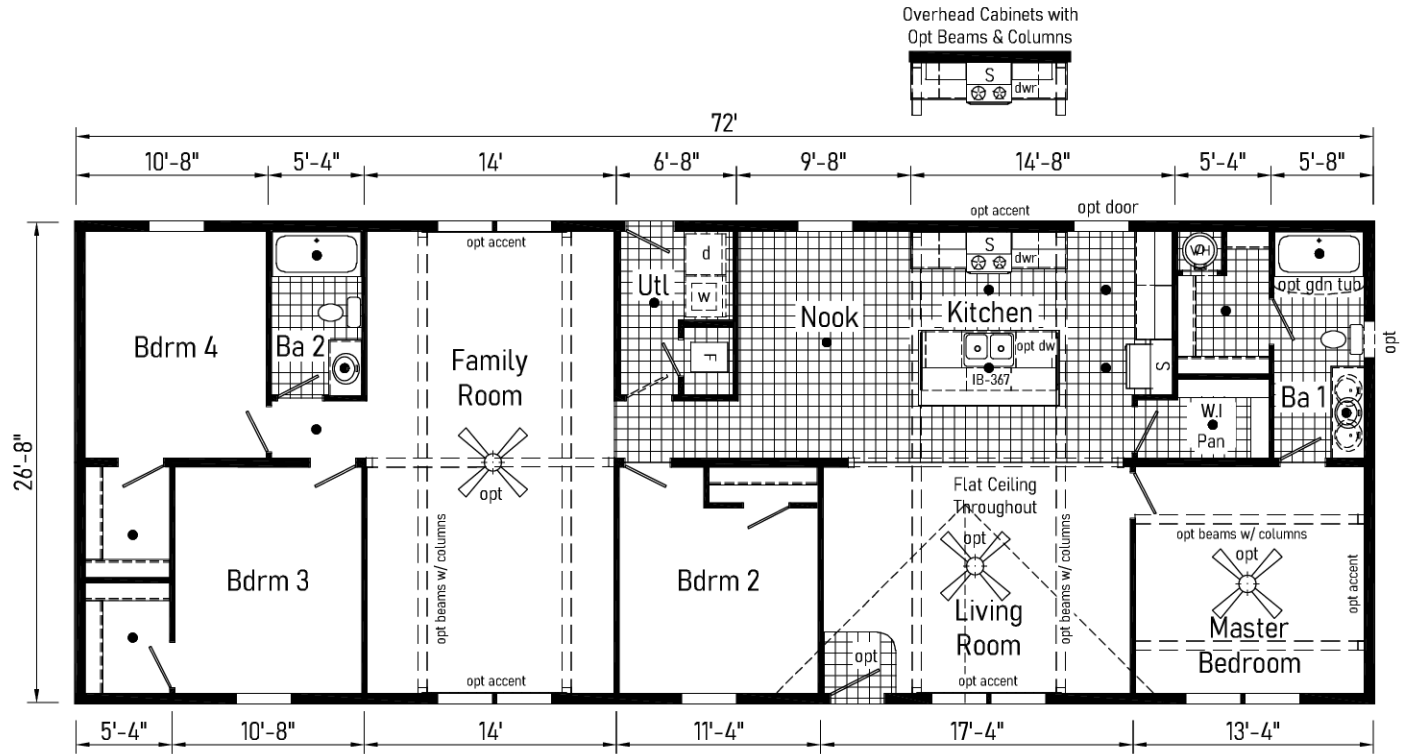
(DT1040P)



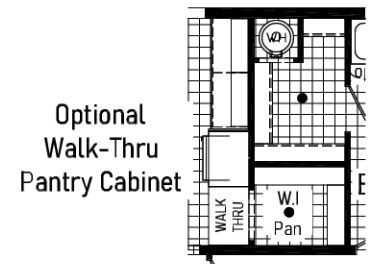
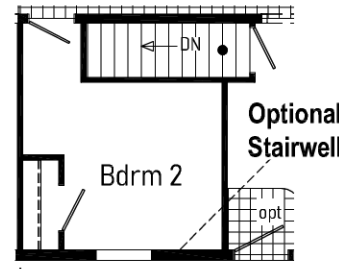
28' X 72'

APPROX. 1920 SQ. FT.

PRESTIGE



- = Std. can light
- S = Std. 4" staggered overhead cabinets
- Note: Staggered cabinet over refrigerator becomes non-staggered with optional walk-thru pantry cabinet.





Baileys Harbor - BP28644A

Family 1

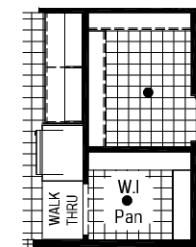
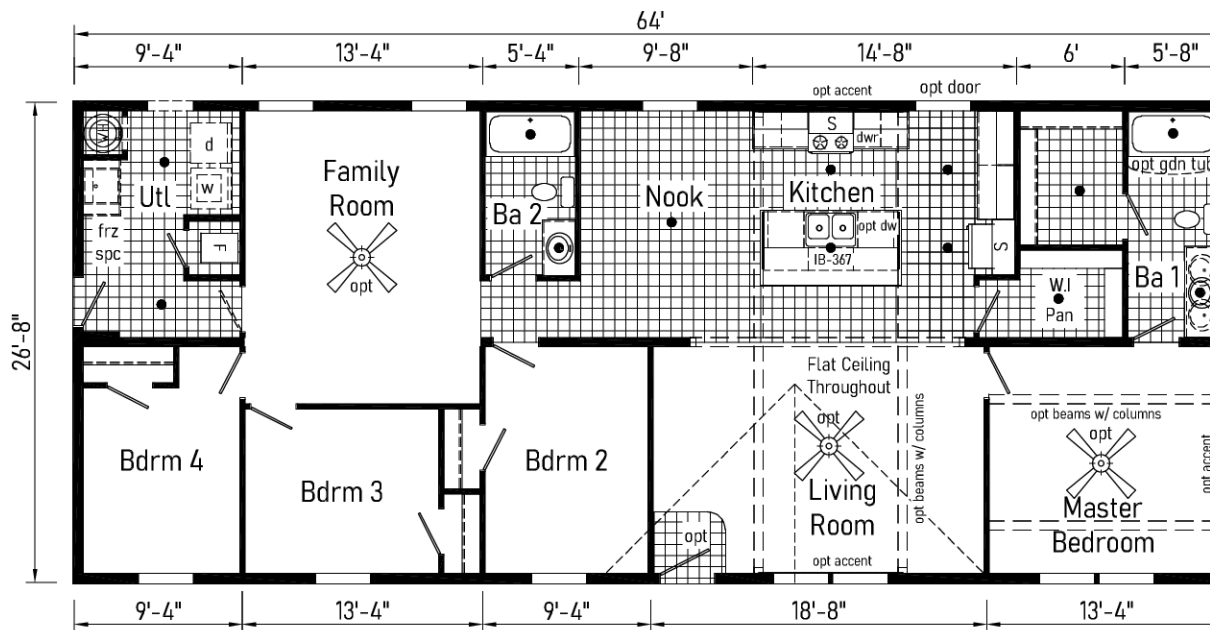
14

(DT1039P)

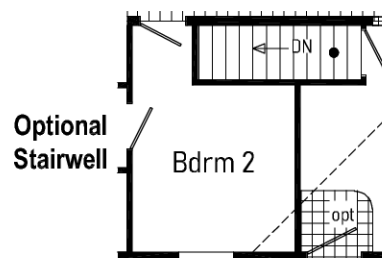


APPROX. 1707 SQ. FT.

PRESTIGE



Optional Walk-Thru Pantry Cabinet





Scan to Watch Video!



BAILEYS HARBOR PHOTOS



*Please use pictures for floorplan vision only. Decors and materials used are constantly changed and improved.

3



2



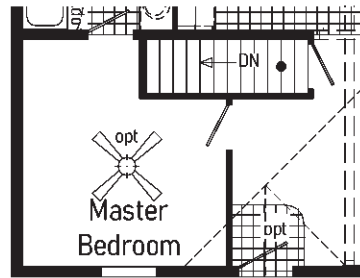
28' X 44'

APPROX. 1173 SQ. FT.

PRESTIGE

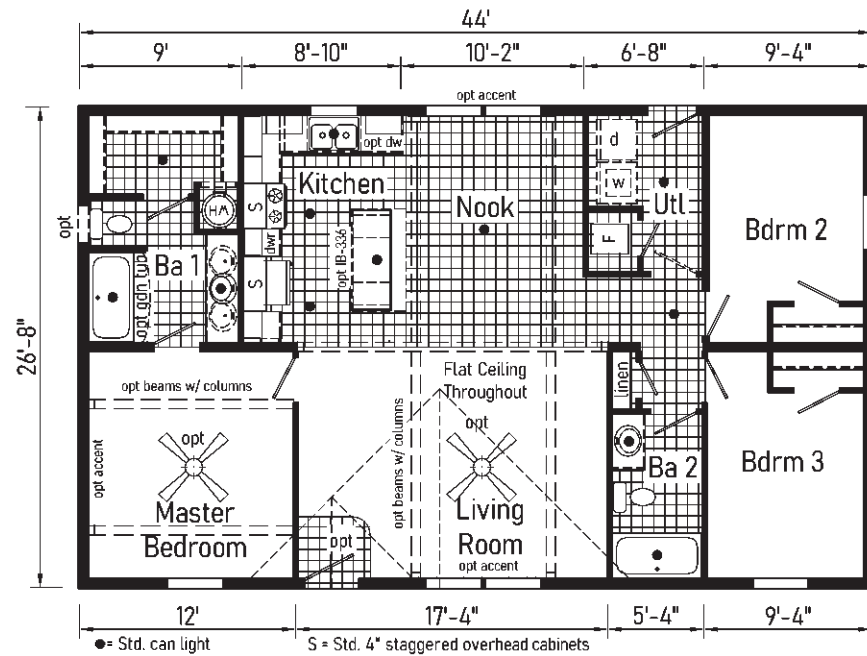
Warrior Rock - BP28443A

(DT1041P)



Optional Stairwell

Opt kitchen island cabinet is not available with optional stairwell.



● = Std. can light S = Std. 4" staggered overhead cabinets

3



2



Cedar Key - BP28483B

(DT1029P)

Additional Plans

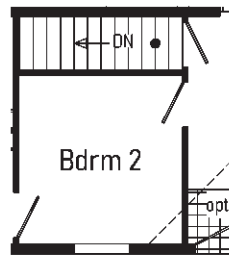


28' X 48'

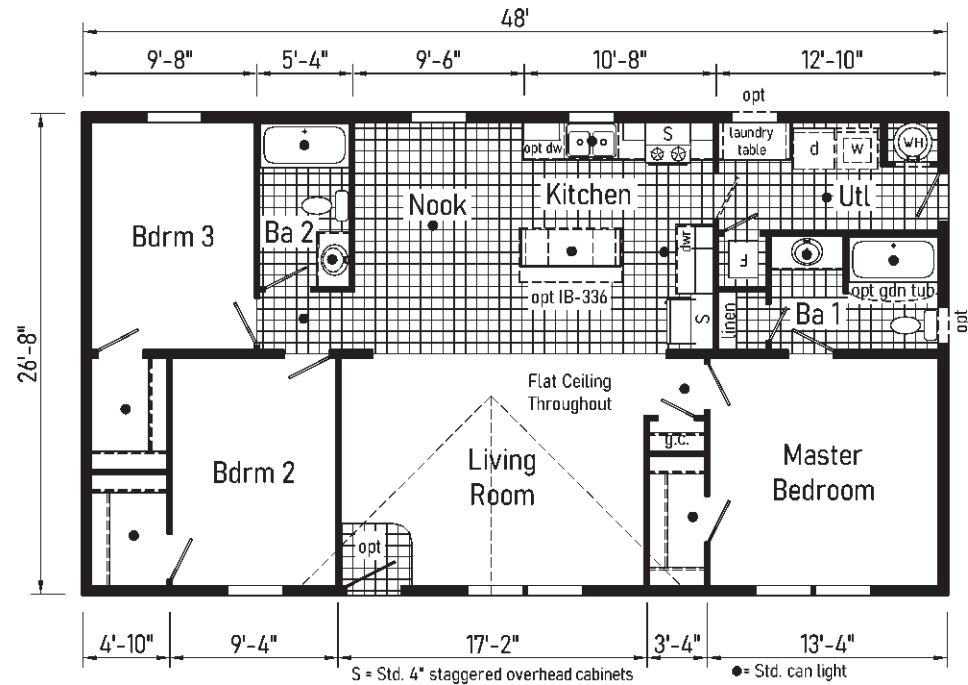
APPROX. 1280 SQ. FT.



Scan to Watch Video!



Optional Stairwell



PRESTIGE



*Please use pictures for floorplan vision only. Decors and materials used are constantly changed and improved.

3



2



Amelia Island - BP28603B

Additional Plans

18

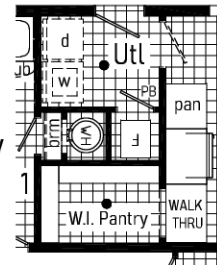


28' X 60'

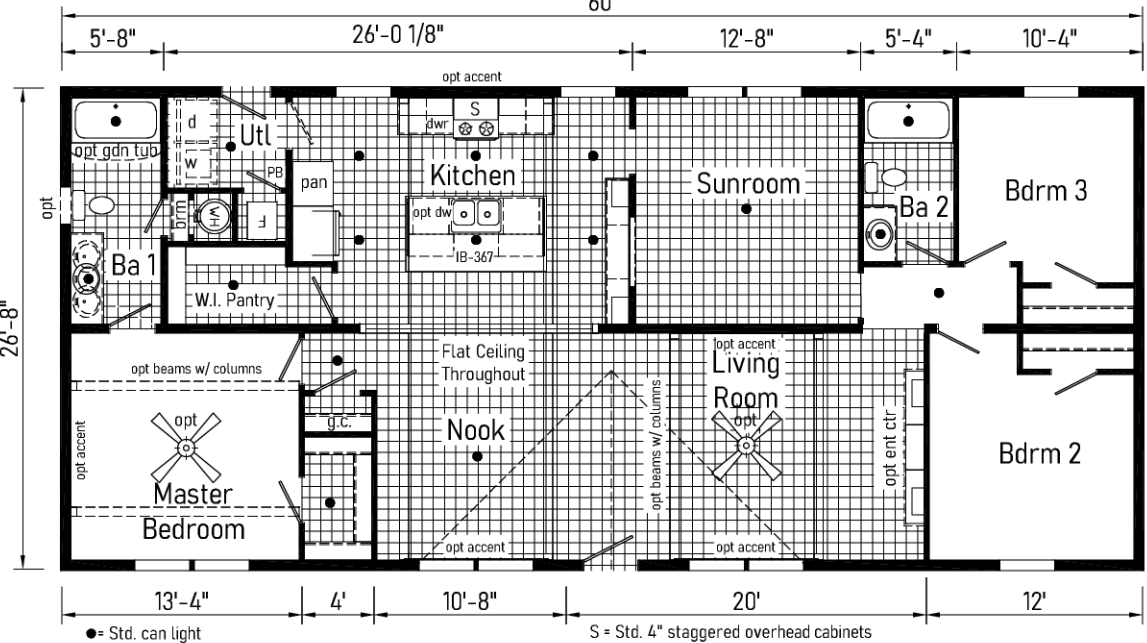
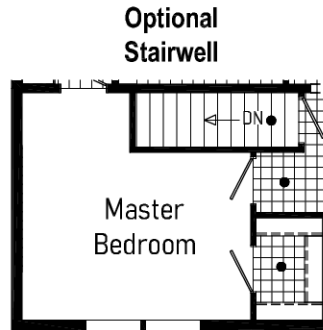
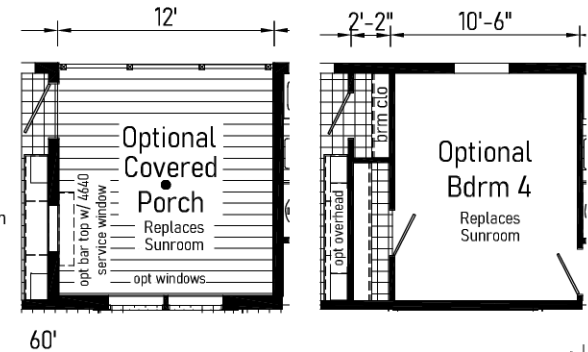
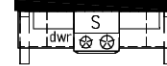
APPROX. 1600 SQ. FT.

PRESTIGE

Optional Walk-Thru Pantry Cabinet



Overhead Cabinets with Opt Beams & Columns



• = Std. can light

S = Std. 4" staggered overhead cabinets



Scan to Watch Video!



AMELIA ISLAND PHOTOS



*Please use pictures for floorplan vision only. Decors and materials used are constantly changed and improved.



Boon Island - BP28684A

(DT1034P)

Additional Plans

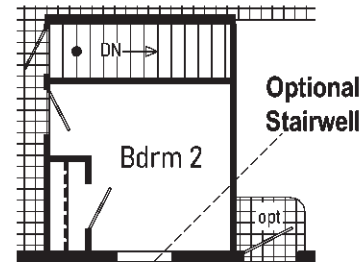
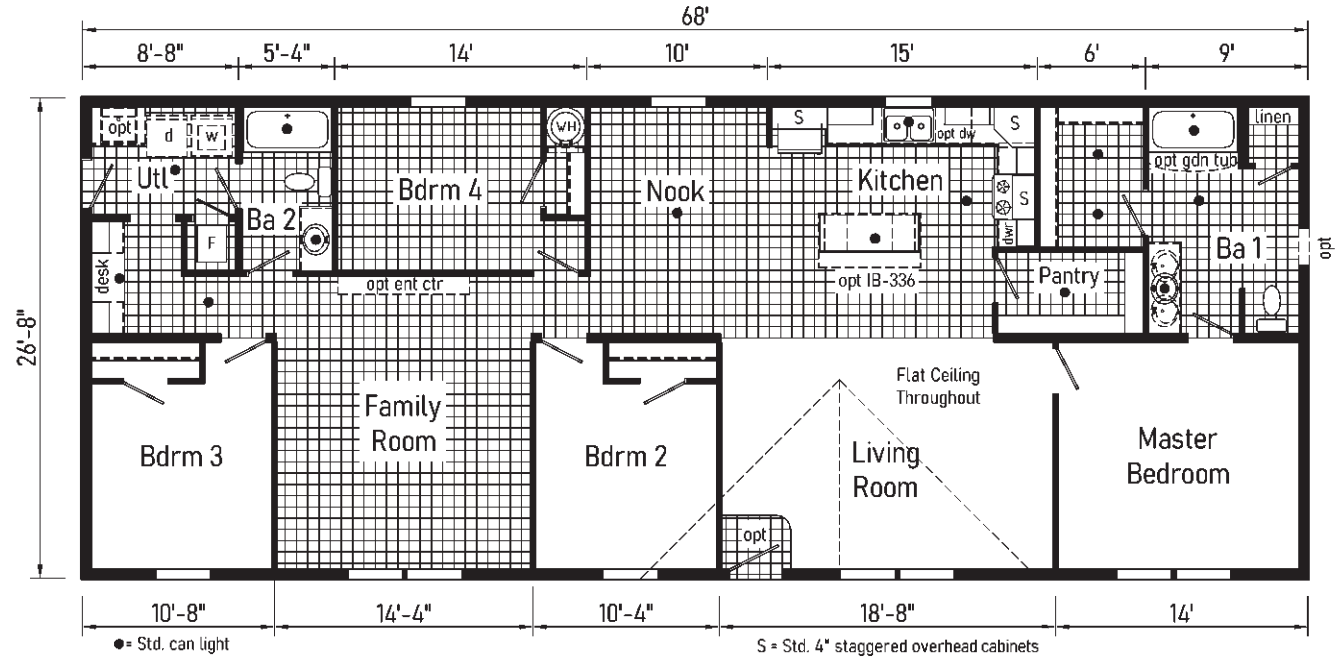
21



28' X 68'

APPROX. 1813 SQ. FT.

PRESTIGE





Poplar Point - BP28764A

(DT1035P)

Additional Plans

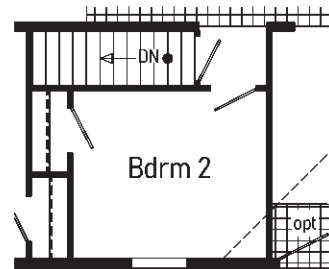
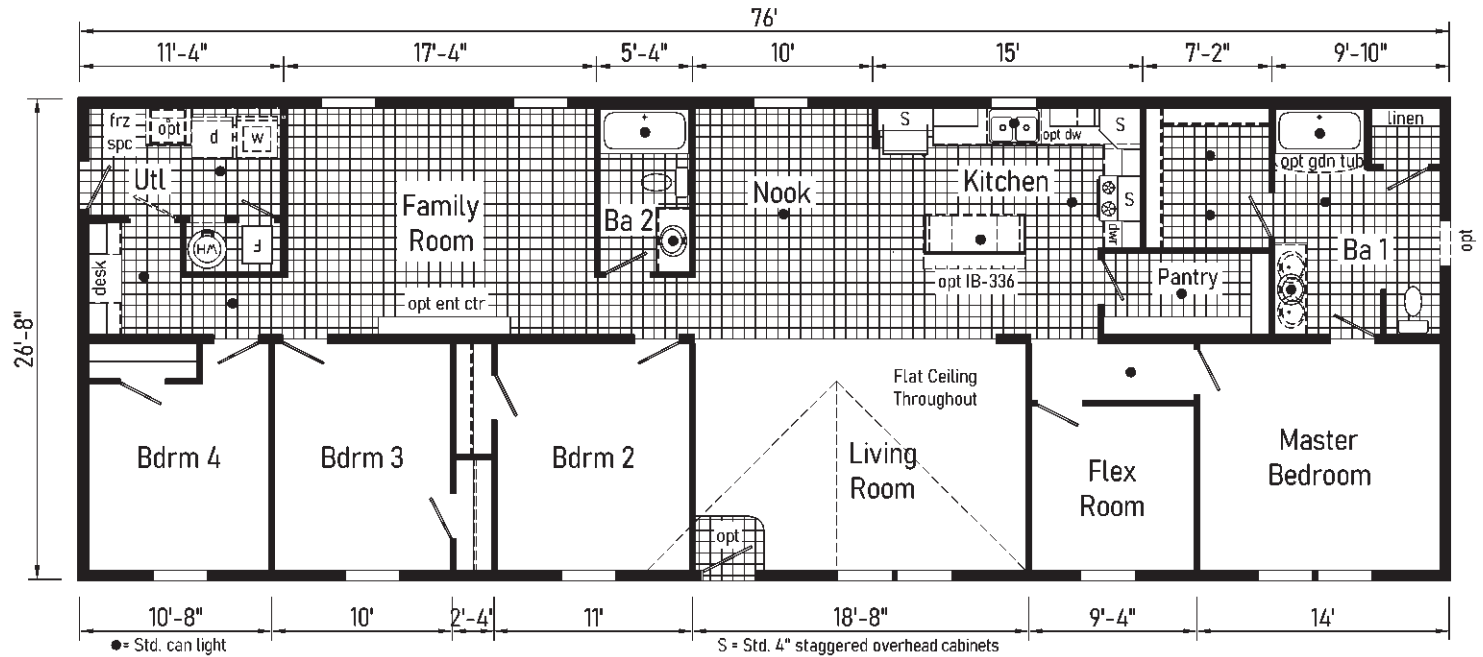
22



28' X 76'

APPROX. 2027 SQ. FT.

PRESTIGE



Optional Stairwell

INTERIOR

Flat Ceiling Throughout
 Stipple Ceiling
 8' Sidewall Height
 Vinyl Wall Coverings on Gypsum
 LED Flush Mount Ceiling Lights
 Pre-Hung Door Jambs
 Mortise Hinges
 Metal Interior Passage Sets
 Floor Mount Door Stops
 Smoke Detectors With Battery Back-Up
 Wire Shelving in Guest Closet
 2" Mini Blinds Throughout
 White 2-Panel Passage Doors

EXTERIOR

Patina Square Light at Front Door
 Seeded Glass Light at Rear Door
 One GFI-Protected Exterior Receptacle
 Vinyl Dutch Lap Siding
 OSB with Wind Wrap
 Architectural Shingle Roof with:
 4" Eaves – Single Section (14/16)
 10" Eaves – Ranch Homes (28/32)
 12" Gable End Overhang
 Ridgevent Roof Ventilation System
 38x82 Fiberglass 6-Panel Front Door
 34x82 Fiberglass 6-Panel Rear Door
 Schlage Exterior Locksets Keyed Alike
 Vinyl Insulated Windows with Grids
 15" Raised Panel Shutters on Front
 Door Side

CONSTRUCTION

2x6 Transverse Floor – 12/14 wide
 2x8 Transverse Floor – 16 wide
 2x6 Exterior Walls on 16" Centers**
 ¾" T&G OSB Floor Decking
 20# Roof Load
 Recessed Frame Design
 OSB with Wind Wrap

***NOTE: Spacing for Framing Members may vary due to Design Requirements*

KITCHEN

30" Deluxe Black Gas Range
 Power Range Hood with Light
 18 Cubic Foot Black, No-Frost Refrigerator
 Stainless Steel Sink - 33x22x8
 Structure Flow Single Lever w/ Sprayer
 1 USB Receptacle

BATHS

60" Fiberglass Tub/Showers
 1.6 Gallon Per Flush Elongated Toilets
 China Stool, Tank and Lid
 Lighted Vent Fan in Each Bath
 Structure Flow Faucets
 Anti-Scald Faucets in Tub/Shower
 Shower Drain w/ Removable Strainer

CABINETRY

KCMA Evermore Custom Cabinetry
 MDF Mission Style Cabinet Doors
 Brushed Nickel Cabinet Hardware
 Lined Overhead Cabinets
 30" Staggered Overhead Cabinets
 Dovetail Drawers
 Laminate Countertops
 Laminate Backsplashes
 Concealed Cabinet Hinges
 Soft Close Drawer Guides
 Base Shelves in Base Cabinets
 Base Shelf in Vanities
 36" High Bath Vanities

**UTILITIES**

Plumbed and Wired for Washer
 Vented and Wired for Dryer
 100 AMP Electrical Service
 30 Gallon Electric Water Heater with Pan
 Gas Furnace - White 2-Panel Door w/Grill
 Air Exchanger System for Furnace
 Aluminum Heat Ducts
 In-Floor Cross-Over Heating System
 Copper Wiring Throughout
 Main Water Line Shut-Off Valve
 8-Wire Thermostat

FLOORING

Choice of Various Styles of Textured
 Carpet:
 -Standard Shaw Edgewater
 -Upgrade Styles Available
 Rebond Carpet Pad with Tackstrip
 Carpet Installation
 Shaw Fortress – Vinyl Floor Coverings

BEDROOMS

Switched Receptacles
 Vinyl Wall Coverings in all Bedrooms
 Egress Window Each Bedroom
 Wire Shelving in Wardrobes
 Switched Light in All Walk-In Closets
 Drape Package in Secondary Bedrooms

INSULATION

R-14 Fiberglass in Floor
 R-19 Fiberglass in Walls
 R-25 Avg. Blown in Ceiling -Single
 R-28 Avg. Blown in Ceiling – Ranch



YOUR INDEPENDENT BUILDER IS:

CONNECT WITH US:



20510 Paint Blvd.
Shippenville, Pennsylvania 16254

814-226-9590
www.cavcohomes.com/shippenville

Your purchase contract including options is with your retailer who is an independent contractor, not our agent, and is responsible totally for any alterations, exchanges, additions or attachments made in or to your home.

All descriptive representations of the products on this brochure are believed to be correct at the time of publication. However, due to continued product improvement and changes in suppliers design and production, accuracy cannot be guaranteed. Therefore, equipment colors, material specifications, prices and model availability are subject to change without notice. All information and images contained in this brochure are property of Cavco Homes and for the use by active dealers of the company only. © AP125658 5M 11/25