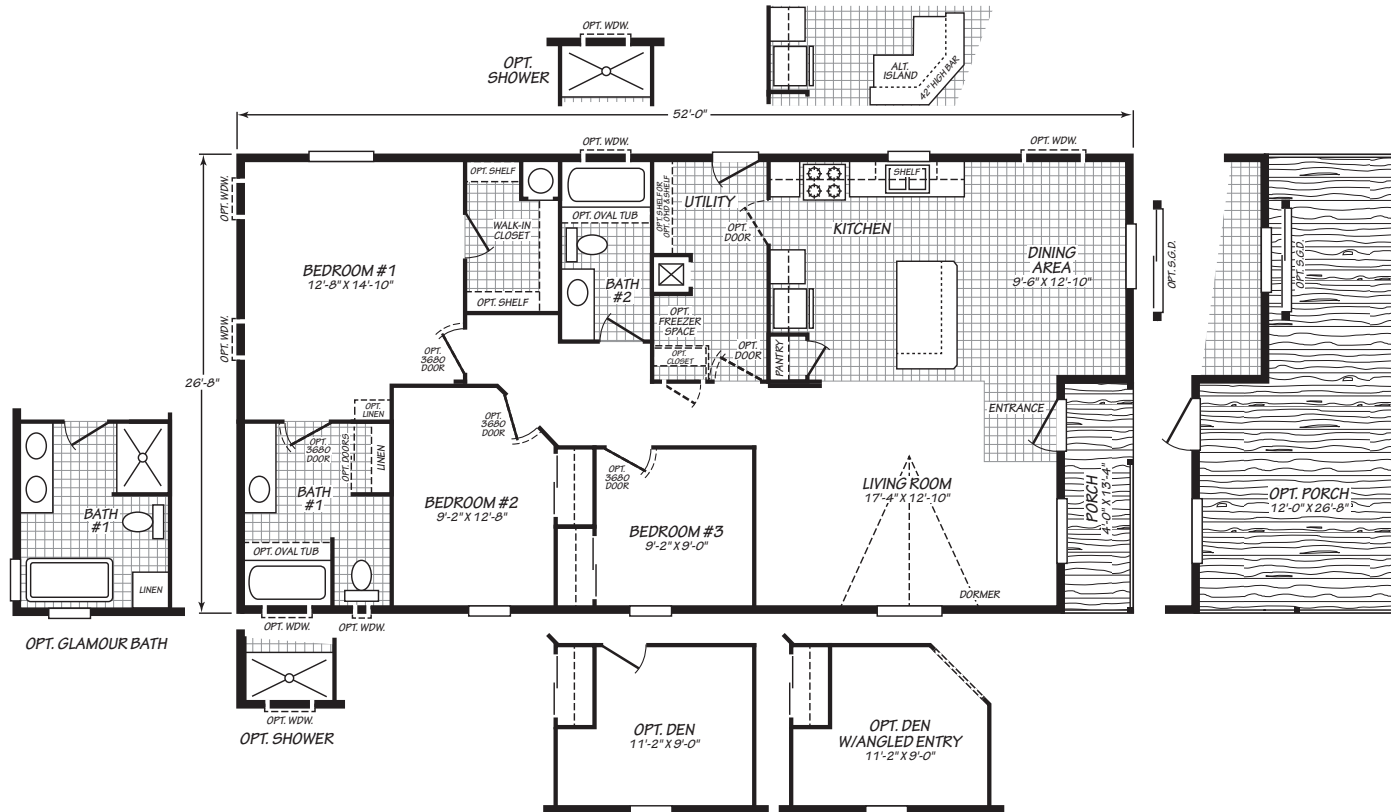




# EAGLE

28523P  
3 bedroom • 2 bathroom • 1,333 sqft



©2026 CAVCO INDUSTRIES INC. ALL RIGHTS RESERVED. All images are for illustrative purposes only and may include non-standard options. Standard features are subject to change. Contact the retailer or builder for current measurements and features.



Where *exceptional* meets *affordable*™

EG/210/17FEB26 APPROVAL\_1/12/26

[cavcwoodburn.com](http://cavcwoodburn.com)