



# BAYVIEW



**Exterior Shown with Standard 7/12 Roof Pitch  
Shown with Porch and Optional Exterior Features**

These are artist renditions for sales purposes only. Refer to working drawings for actual dimensions.  
© 2025 Cavco Martinsville, Inc./Nationwide Series. All Rights Reserved.



**Alternate Exterior:  
BAYVIEW**



**Similar Option:  
SEAGROVE**



**Similar Option:  
HEARTLAND 1 END-ENTRY**

**NATIONWIDE  
SERIES**

**SQ. FT.  
1,245**

**BEDS  
3**

**BATHS  
2**

**STORIES  
1**

**WIDTH  
27'8"**

**DEPTH  
52'0"**

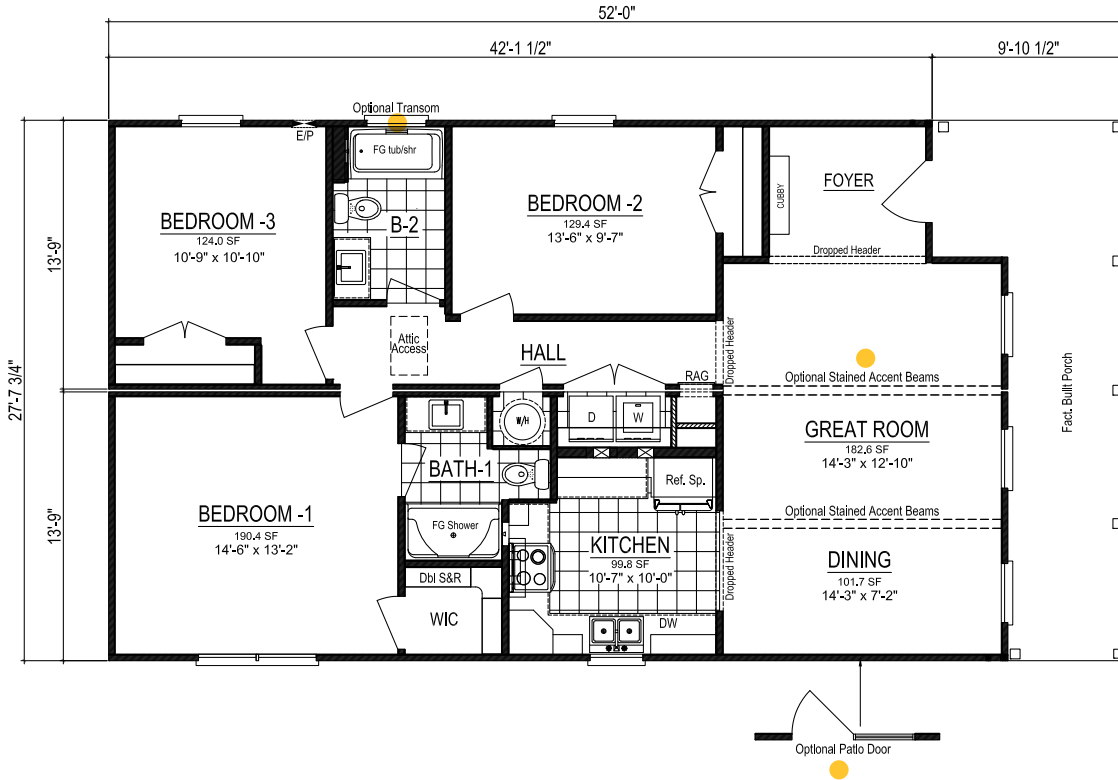
## FLOOR PLAN FEATURES

Factory Built Porch  
Open-Concept

Designed Foyer  
U-Shaped Kitchen Design  
Built-in Cubby & Bench

Primary Walk-in Closet  
Walk-in Shower

# BAYVIEW



Total Finished Square Footage: 1,245

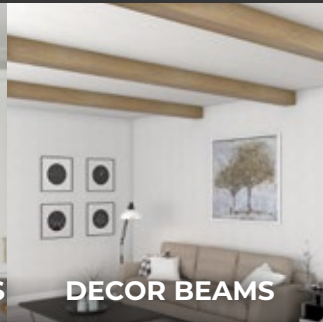
## CUSTOMIZE YOUR HOME



HIDDEN PANTRY



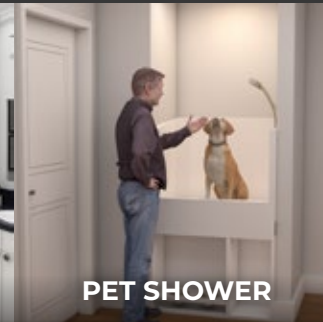
CUSTOM RANGEHOODS



DECOR BEAMS



LUXURY SHOWER



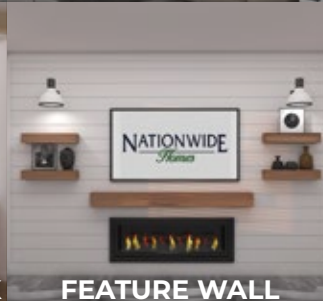
PET SHOWER



WOODEN PANTRY



TRIPLE WINDOW SINK



FEATURE WALL



WOODEN RACKS



PUPPY NICHE