



# FARMHOUSE

Colony Eastland



Floorplan *Literature*

3



2



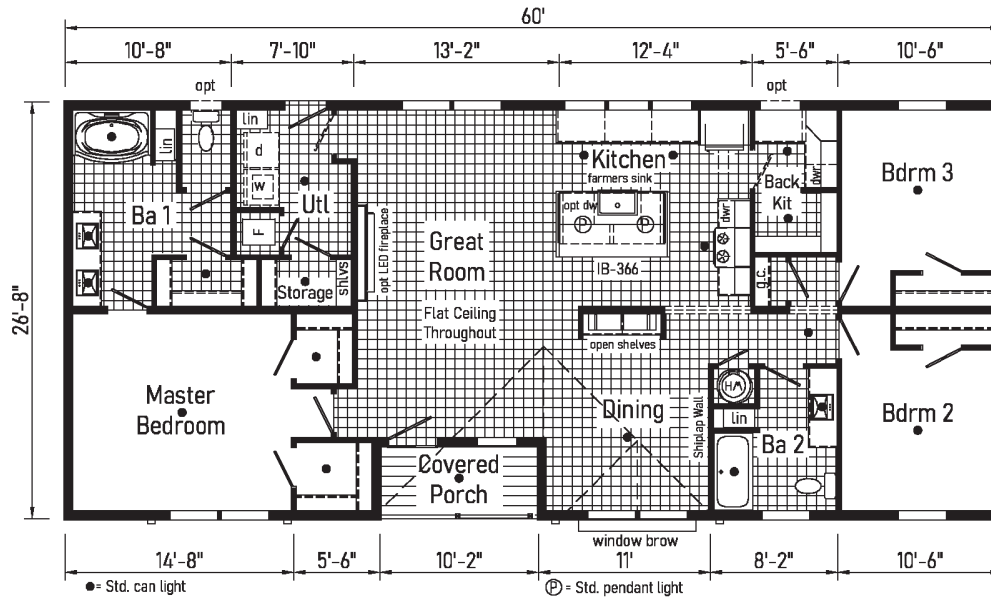
# Farmhouse 1 - EC28603K

(A32702P)

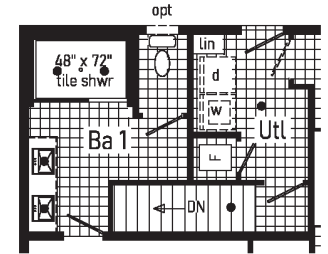


28' X 60'

APPROX. 1553 SQ. FT.



Optional  
4'x6' Walk-In  
Tile Shower



Optional  
Stairwell  
Omits closets.

# Farmhouse 2 - EC28683B

(A32703P)

3

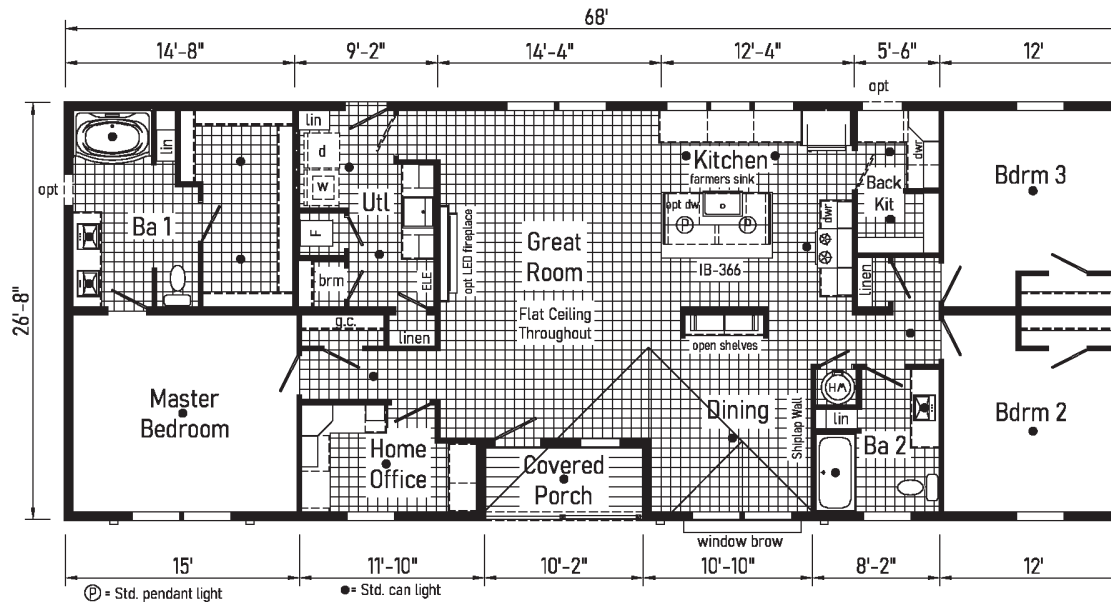


2

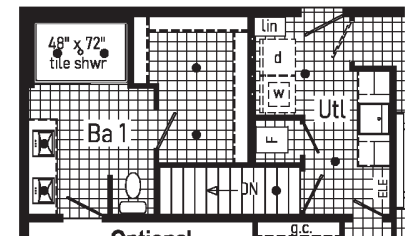


28' X 68'

APPROX. 1766 SQ. FT.



Optional  
4'x6' Walk-In  
Tile Shower

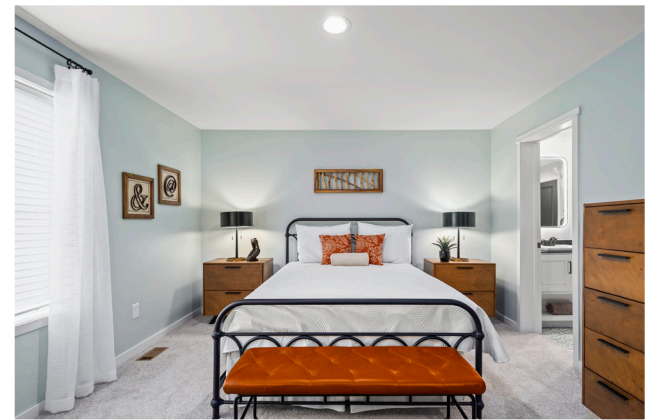


Optional  
Stairwell  
Omits broom closet.

# FARMHOUSE



Scan to Watch Video!



FARMHOUSE 1 PHOTOS



# STANDARD FEATURES

## INTERIOR

Flat Ceiling Throughout  
Stipple Ceiling  
8' Sidewall Height  
LED Flush Mount Ceiling Lights  
Pre-Hung Door Jambs  
Mortise Hinges  
Metal Interior Passage Sets  
Floor Mount Door Stops  
Wire Shelving in Guest Closet  
Window Treatments  
2" Mini Blinds Throughout  
Black 2-Panel Passage Doors  
Open Shelving  
Ship Lap Accent Walls  
White Ceiling Fan

## EXTERIOR

Gatsby Light - Front & Rear Door  
One GFI-Protected Exterior Receptacle  
Vinyl Dutch Lap Siding  
OSB with Wind Wrap  
5/12 24" O.C. Architectural Shingle Roof with  
10" Eaves  
Twin Peak Dormer w/Black Gable Pediment  
Window Awning w/ Metal Roof  
2 Exterior Gas Lights at Awning  
Carbon Vertical Siding Accent w/ 2 White  
Columns  
12" Gable End Overhang  
Ridgevent Roof Ventilation System  
38x82 Black Fiberglass 3-Lite Front Door  
34x82 Black Fiberglass 1/2 Glass Rear Door  
Schlage Exterior Locksets Keyed Alike  
Black Vinyl Insulated Windows w/ Grid  
Pattern 2/2  
White Lap Siding  
Black Fascia & Soffit  
Window Lineals on Front Door Side

## KITCHEN

30" Deluxe Black Gas Range  
Power Range Hood with Light  
18 Cubic Foot Black, No-Frost Refrigerator  
Galley Sink Stainless Steel w/ Black  
Coilspring Faucet  
1 USB Receptacle  
2 Pendant Lights at Island  
Full Ceramic Backsplash

## BATHS

60" Fiberglass Tub/Showers  
Garden Tub/Shower at Bath 1  
1.6 Gallon Per Flush Elongated Toilets  
China Stool, Tank and Lid  
Lighted Vent Fan in Each Bath  
Black Structured Flow Faucets  
Anti-Scald Faucets in Tub/Shower  
Shower Drain with Removable Strainer  
Square China Lav  
Furniture Style Lav

## CABINETRY

Evermore Custom Cabinetry (KCMA Certified)  
White & Onyx Black HW Mission Style  
Cabinet Doors  
Black Cabinet Pulls  
Contemporary Crown Moulding on Kitchen  
Cabinets  
Lined Overhead Cabinets  
30" Staggered Height Overhead Cabinets  
Laminate Countertops  
Laminate Backsplashes  
Concealed Cabinet Hinges  
Soft Close Drawer Guides  
Dovetail Drawers  
Base and Center Shelves in Base Cabinets  
Base Shelf in Vanities  
36" High Bath Vanities



## UTILITIES

Plumbed and Wired for Washer  
Vented and Wired for Dryer  
100 AMP Electrical Service w/Extended Panel  
40 Gallon Electric Water Heater with Pan  
Gas Furnace - White 2-Panel Door w/Grill  
Air Exchanger System for Furnace  
Aluminum Heat Ducts  
Perimeter Heat  
In-Floor Cross-Over Heating System  
Copper Wiring Throughout  
Water Shut Offs Throughout  
8-Wire Thermostat  
Smoke Detectors With Battery Back-Up

## FLOORING

Choice of Various Styles of Carpet:  
-Standard Shaw Edgewater  
-Upgrade Styles Available  
Rebond Carpet Pad with Tackstrip  
Carpet Installation  
Shaw Fortress - Vinyl Floor Coverings

## BEDROOMS

Switched Light Each Bedroom  
Vinyl Wall Coverings in all Bedrooms  
Egress Window Each Bedroom  
Wire Shelving in Wardrobes  
Switched Light in All Walk-In Closets  
Drape Package in Secondary Bedrooms

## INSULATION

R-22 Fiberglass in Floor  
R-19 Fiberglass in Walls  
R-28 Avg. Blown in Ceiling - Ranch

## CONSTRUCTION

2x6 Exterior Walls on 16" Centers\*\*  
¾" T&G OSB Floor Decking  
30# Roof Load  
Recessed Frame Design

\*\*NOTE: Spacing for Framing Members may vary due to Design Requirements

20510 Paint Blvd.  
Shippenville, Pennsylvania 16254

814-226-9590  
www.cavcohomes.com/shippenville

Your purchase contract including options is with your retailer who is an independent contractor, not our agent, and is responsible totally for any alterations, exchanges, additions or attachments made in or to your home.

All descriptive representations of the products on this brochure are believed to be correct at the time of publication. However, due to continued product improvement and changes in suppliers design and production, accuracy cannot be guaranteed. Therefore, equipment colors, material specifications, prices and model availability are subject to change without notice. All information and images contained in this brochure are property of Cavco Homes and for the use by active dealers of the company only. © AP125664 2.5M 11/25