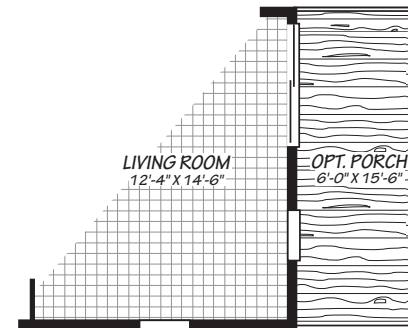
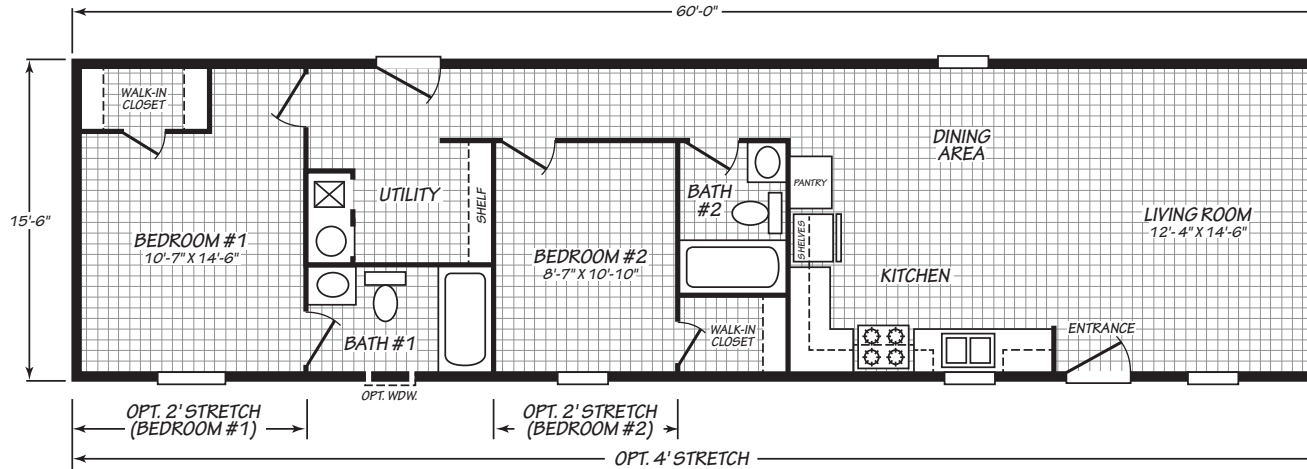




# FLEETWOOD

16602D

2 bedroom • 2 bathroom • 930 sqft



©2026 CAVCO INDUSTRIES INC. ALL RIGHTS RESERVED. All images are for illustrative purposes only and may include non-standard options. Standard features are subject to change. Contact the retailer or builder for current measurements and features.



Where *exceptional* meets *affordable*.™

FW/250/01MAY26 APPROVAL\_04/30/26

[cavcohomeslafayette.com](http://cavcohomeslafayette.com)