



# ESSENCE

THE ESSENCE OF AFFORDABLE HOUSING



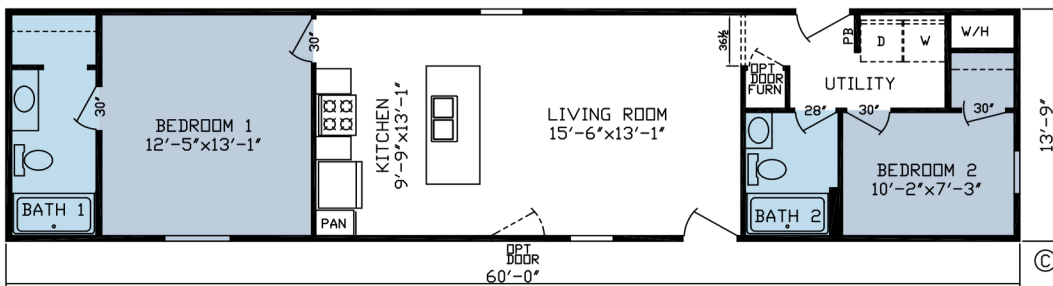
A Complete Line of Entry Level  
Single & Sectional Homes.



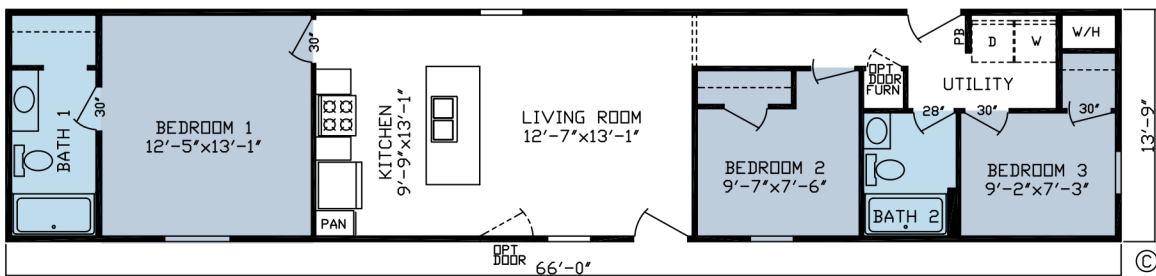
AVAILABLE IN 14' WIDE 60' & 66' LONG



42" Cabinets  
Kitchen Island

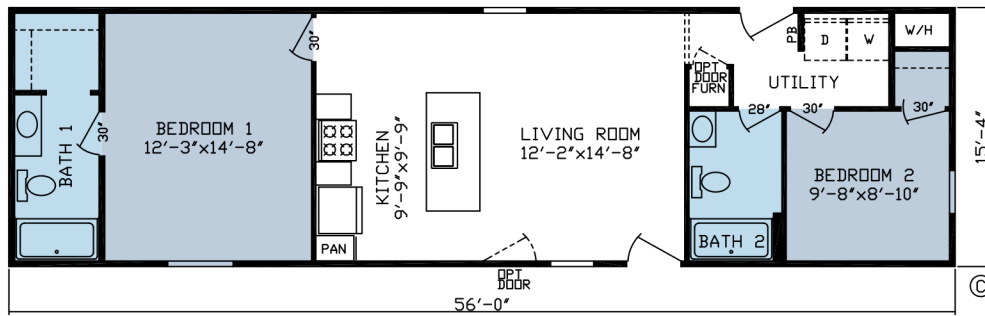


**THE HUNTER** -14x60 - Model 27500 - 2BR / 2BA - 825 Sq Ft

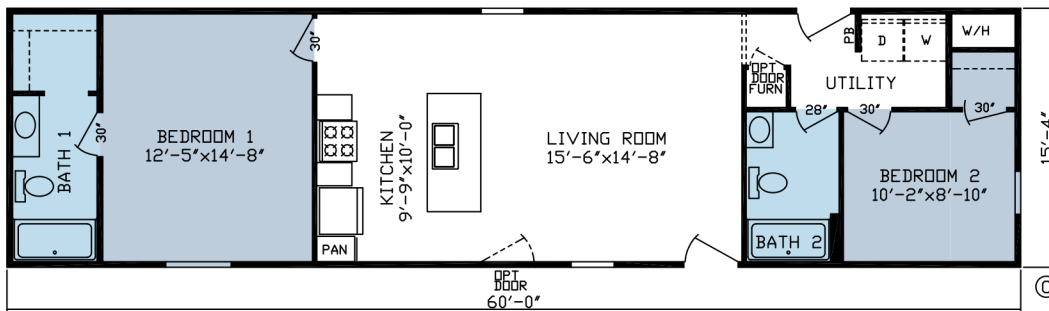


**THE WHITNEY** -14x66 - Model 27501 - 3BR / 2BA - 908 Sq Ft

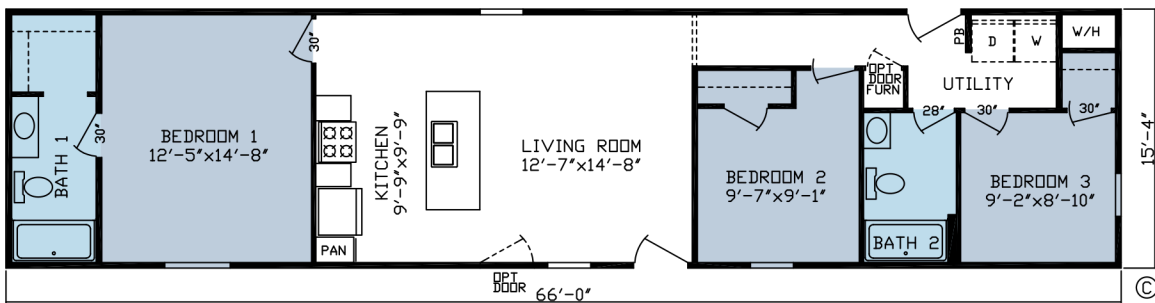
# AVAILABLE IN 16' WIDE 56, 60', 66' & 76' LONG



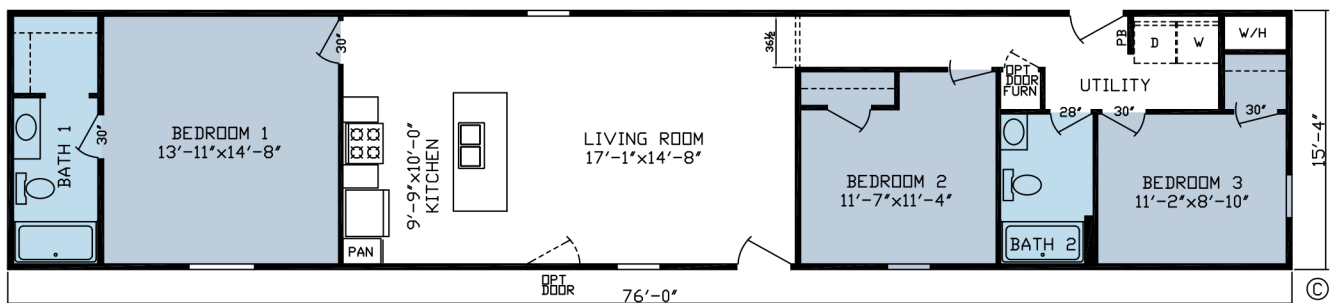
**THE HUBBARD** -16x56 - Model 27502 - 2BR / 2BA - 858 Sq Ft



**THE FAIRWEATHER** -16x60 - Model 27503 - 2BR / 2BA - 920 Sq Ft



**THE MATTERHORN** -16x66 - Model 27504 - 3BR / 2BA - 1012 Sq Ft



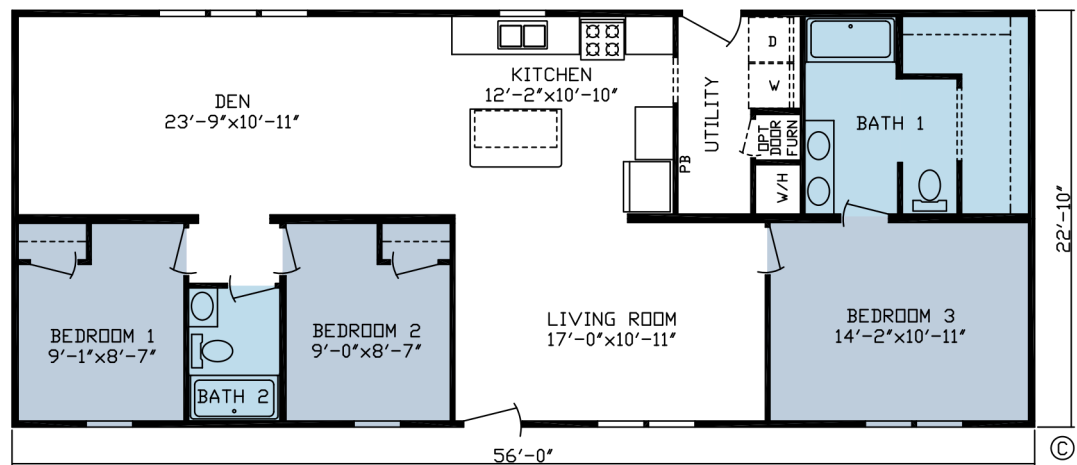
**THE RAINIER** -16x76 - Model 27505 - 3BR / 2BA - 1165 Sq Ft

AVAILABLE IN 24' WIDE & 28' WIDE



LED Can Lights  
Black Appliances

**THE OLYMPUS** - 24x56 - Model 27001  
3 BR / 2 BA 1,279 Sq Ft



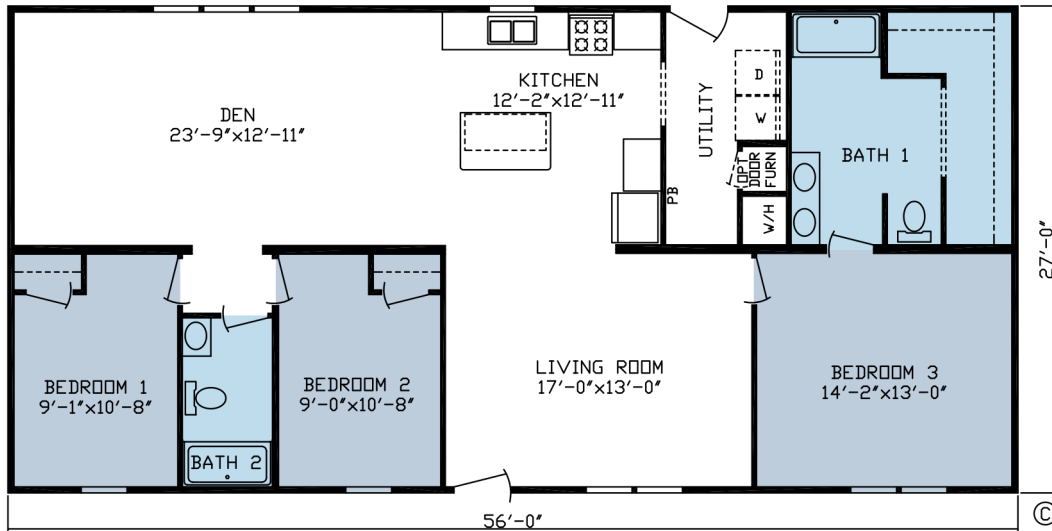
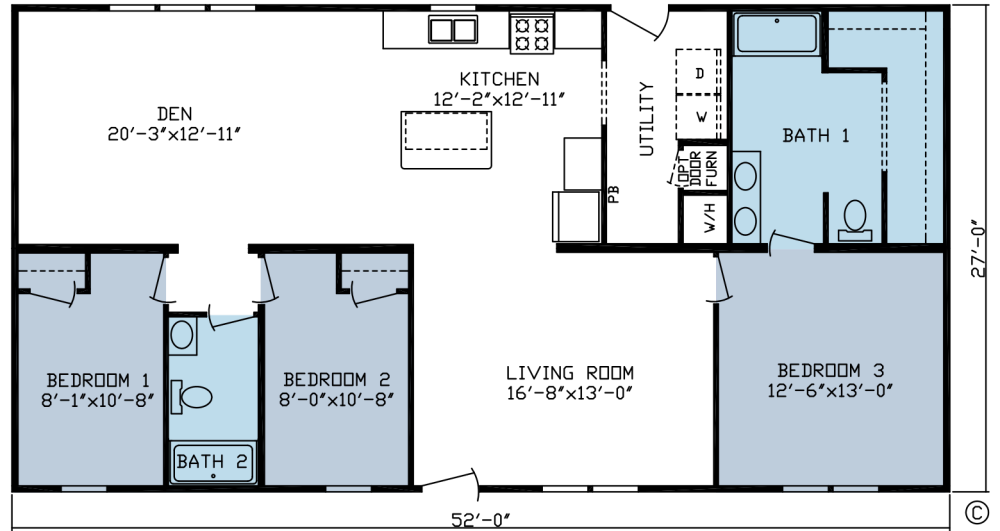
# THE EIGER

28x52

Model 27002

3 BR / 2BA

1,404 SqFt



# THE EVEREST

28x56

Model 27000

3 BR / 2BA

1,512 SqFt

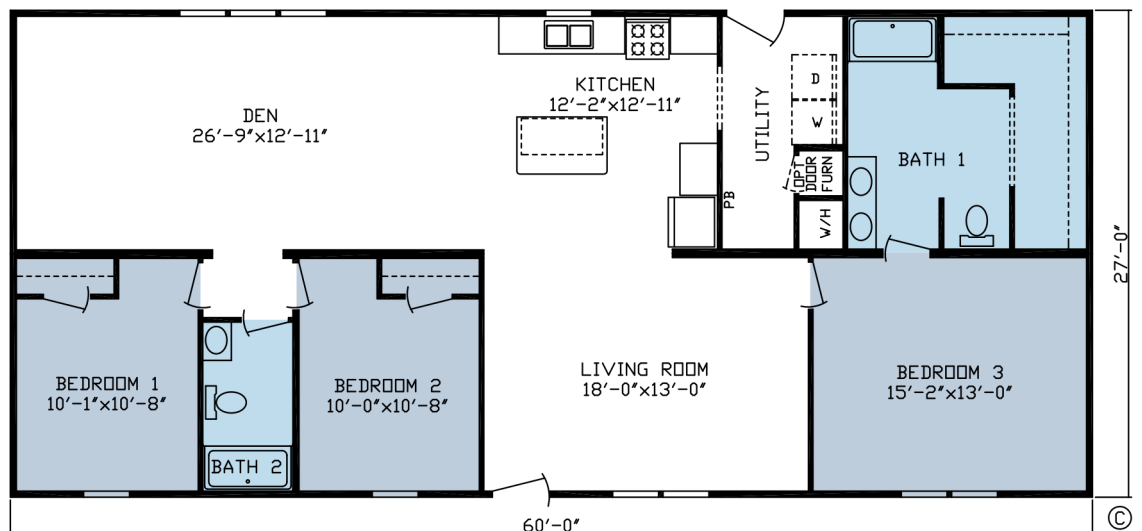
# THE MCKINLEY

28x60

Model 27003

3 BR / 2BA

1,620 SqFt





Elevation 1



Elevation 1A



Elevation 1B



Elevation 1C

**ALL SIDING COLORS AVAILABLE**



Elevation 1D



Elevation 1DF (Flipped)\*

\* Floorplans are available in Reverse or Flipped versions

# ROOFING

STANDARD  
25 YEAR WARRANTY



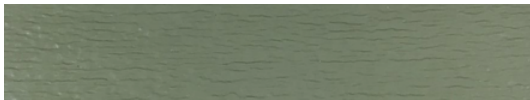
*Rustic Black*



*Weathered Wood*



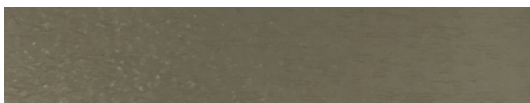
STANDARD



*Cypress*



*Harvard Slate*

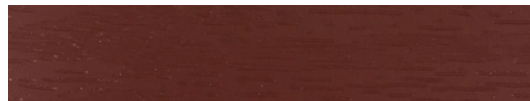


*Pebble Clay*

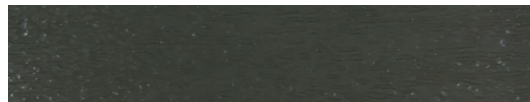


*White*

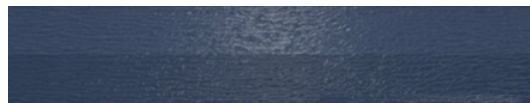
UPGRADE



*Redwood*



*Ironstone*



*Marine Blue*



*Shamrock*

The logo for ROYAL Building Products, featuring a stylized house icon and the text "ROYAL Building Products".

# SIDING

# SHUTTERS



*White*

*Sandstone*

*Black*

*Brown*

*Royal*

*Pine*

*Berry*

# ESSENCE Standard Features

## Energy Saving Standard Features of your ESSENCE Series Home.

- Foam Sealant Air Infiltration Barriers (All Windows & Doors)
- R-29 Roof Insulation
- 2x4 Sidewalls with R-11 Insulation
- **Gas Furnace**
- Positive Operating System

## Exterior & Construction

- Nominal 3/12 Roof Pitch
- 8' Sidewall Height w/ Flat Ceiling
- Rafters 24" O.C.
- 16" O.C. Floor Joists
- 19/32" Tongue & Groove OSB Floor Decking
- R-11 Floor Insulation
- TAMKO® 25 Year Shingled Roof
- Royal® Double 4" Dutch Vinyl Lap Siding
- Ice & Water Barrier
- **Raised Panel Shutters (Hitch End Only on Single Wides & Door Side Only on Double Wides)**
- **OSB Sheathing**
- **House Wrap**

## Floor Coverings

- 5 Pound Rebond Carpet Pad
- **Congoleum® Armorflor® Roll Goods - Factory Select**
- Roll Goods Throughout

## Electrical

- Exterior GFI Weather Resistant Receptacle on Sidewall
- GFI Bath & Kitchen Receptacles
- Smoke Alarms
- Wire and Vent for Dryer
- Porch Light at Front & Rear Doors
- **Recessed LED Can Lights in Kitchen, Dining Room & Bedrooms**
- 100 AMP Service

## Décor

- **1/2" Decorative Vinyl on Gypsum Walls - Factory Select**
- Textured Stippled Ceilings
- 1-1/2" Door & Window Casing
- **Mini Blinds Throughout**

## Plumbing

- Plumbing for Washer
- **30 Gallon Electric Water Heater**
- **7" Deep Stainless Steel Kitchen Sink**
- Main Water Shut-Off Below Floor
- Water Heater Access w/Chalkboard Panels (Per Print)

## Baths

- **1 Piece Fiberglass Tub in Baths**
- Pop-Up Drains on Bath Sinks w/Overflows
- Power Exhaust Fan
- Lav Mirrors w/Clips
- **China Lavs**
- **Metal Faucets**

## Doors & Windows

- Kinro® White Low-E Easy Clean Tilt-Out Sash, Single-Hung Thermopane Windows, No Grids
- **36" 6-Panel Fiberglass Front & Rear Door w/Deadbolt**
- Wall Mounted Door Stops
- Triple Hinged Interior Doors
- Pre-Hung 2-Panel Arch Top White Interior Doors
- Satin Nickel Interior Door Knobs

## Cabinetry

- **42" Overhead Kitchen Cabinets**
- Wrapped Face Frames/Wrapped Cabinetry
- No Hardware, Shaker Style
- OH Cabinets w/Adjustable Shelves
- Hidden Hinges
- Dove Tail Drawer Construction
- Side Mounted Drawer Guides
- Shelf over Refrigerator & Range
- Wire Shelving in Pantry & Linen
- **Kitchen Island**

## Appliances

- Black 18 CF Frost Free Refrigerator
- Black 30" Standard Gas Range
- Black 30" Range Hood

Congoleum®



Kinro



2181 E. Market St  
Nappanee, IN 46550  
[www.CavcoNappanee.com](http://www.CavcoNappanee.com)