



GRANDVIEW III



**Exterior Shown with Standard 12/12 Roof Pitch
Shown with Porch and Optional Exterior Features**

These are artist renditions for sales purposes only. Refer to working drawings for actual dimensions.
© 2025 Cavco Martinsville, Inc./Nationwide Series. All Rights Reserved.



**Alternate Exterior
GRANDVIEW III**



**Similar Option:
OAK**



**Similar Option:
OAK (Alternate Exterior)**

**NATIONWIDE
—HEARTLAND—**

UP TO
SQ. FT.
2,250

BEDS
1+

BATHS
1.5+

STORIES
1.5

WIDTH
48'0"

DEPTH
27'8"

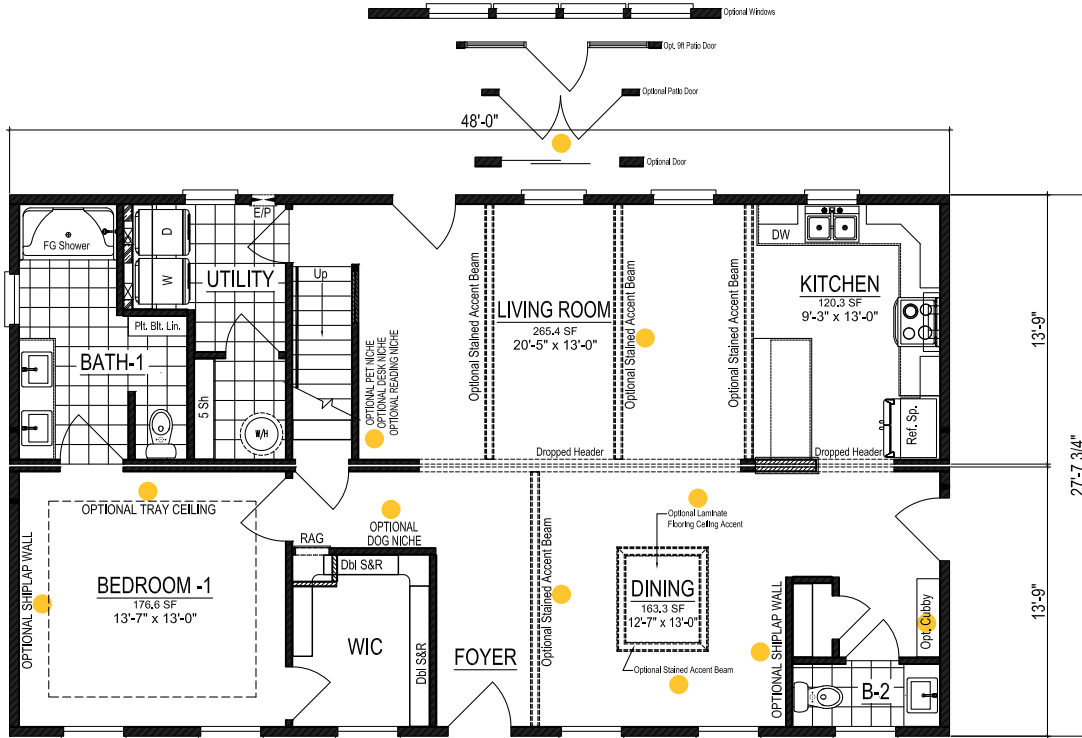
FLOOR PLAN FEATURES

Versatile Family of Plans
Various Exteriors
Designated Foyer

Open Concept
Extended Kitchen Island
Walk-in Shower

Expansive Utility Room
Walk-in Closets
Built-in Linen

GRANDVIEW III



● Used to indicate optional features

First Floor: 1,327 Sq. Ft. Finished | Second Floor: 923 Sq. Ft. Unfinished | Total Potential Square Footage: 2,250

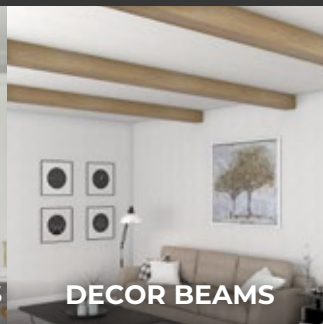
CUSTOMIZE YOUR HOME



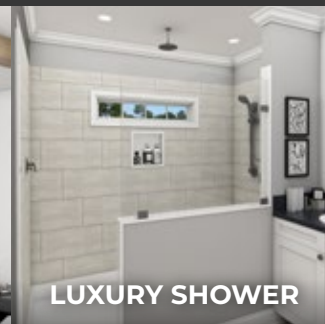
HIDDEN PANTRY



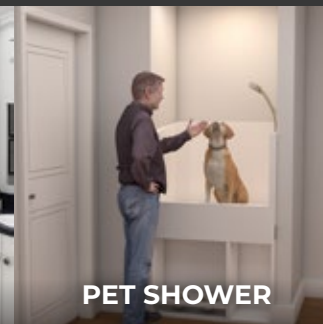
CUSTOM RANGEHOODS



DECOR BEAMS



LUXURY SHOWER



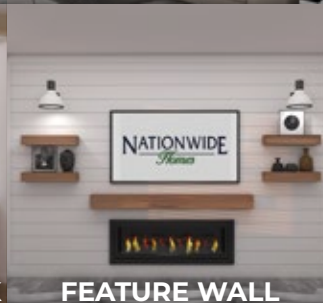
PET SHOWER



WOODEN PANTRY



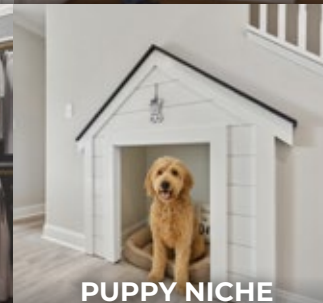
TRIPLE WINDOW SINK



FEATURE WALL



WOODEN RACKS



PUPPY NICHE