



FARMHOUSE I



**Exterior Shown with Standard 12/12 Roof Pitch
Shown with Porch and Optional Exterior Features**

These are artist renditions for sales purposes only. Refer to working drawings for actual dimensions.
© 2025 Cavco Martinsville, Inc./Nationwide Series. All Rights Reserved.



**Alternate Exterior
FARMHOUSE I**



**Similar Option:
FARMHOUSE II**



**Similar Option:
FARMHOUSE V**

**NATIONWIDE
SERIES**

UP TO
SQ. FT.
1,823

BEDS
3

BATHS
2.5

STORIES
2

WIDTH
37'11"

DEPTH
42'0"

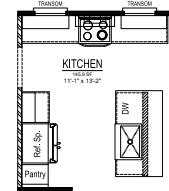
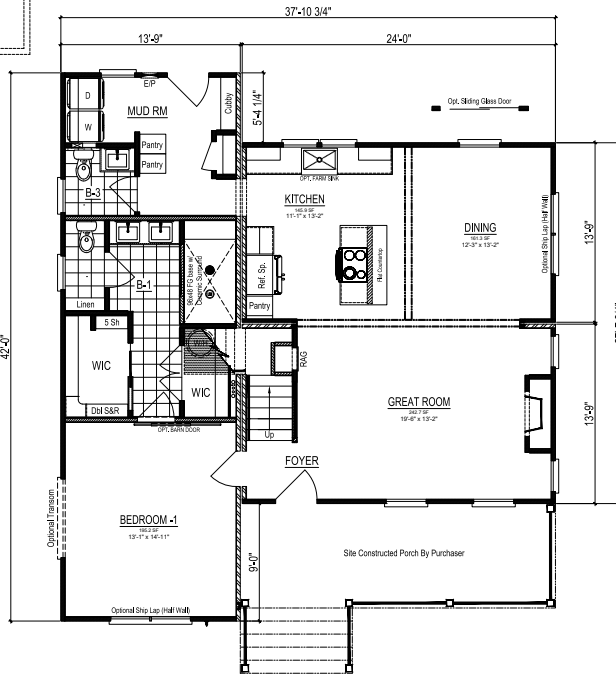
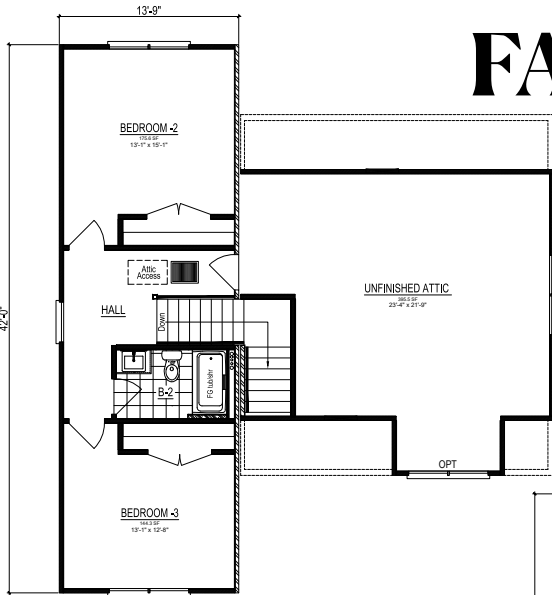
FLOOR PLAN FEATURES

Open-Concept
Expansive Mudroom
Built-in Cubby & Bench

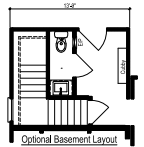
Unfinished Space for Expansion
Kitchen Island for Cooking
Main Level Primary Suite
Dual Primary Suite Closets

4x8' Luxury Ceramic Shower
Primary Walk-in Closet
Built-in Primary Bath Linen

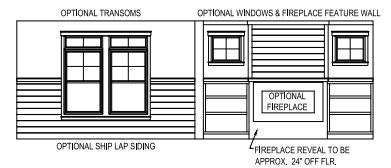
FARMHOUSE I



Optional Kitchen Layout



Optional Basement Layout



OPTIONAL TRANSOMS

OPTIONAL WINDOWS & FIREPLACE FEATURE WALL

OPTIONAL SHIP LAP SIDING

OPTIONAL FIREPLACE
FIREPLACE REVEAL TO BE APPROX. 24" OFF FLR.



SCAN FOR VIDEO TOUR

First Floor: 1,245 Sq. Ft. Finished | Second Floor: 578 Sq. Ft. Finished | Second Floor: 465 Sq. Ft. Unfinished
Total Finished Square Footage: 1,887 | Total Potential Square Footage: 2,287

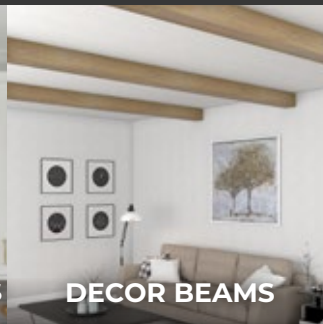
CUSTOMIZE YOUR HOME



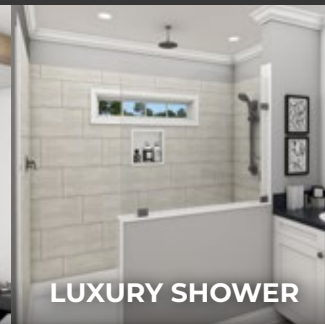
HIDDEN PANTRY



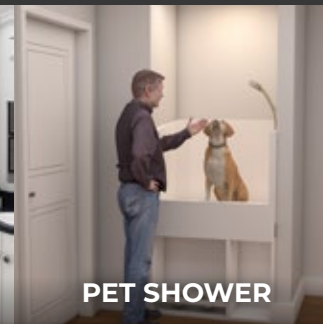
CUSTOM RANGEHOODS



DECOR BEAMS



LUXURY SHOWER



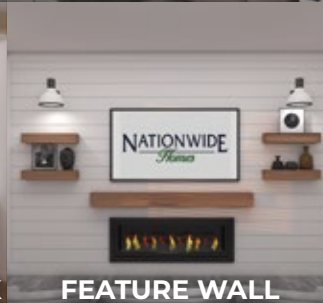
PET SHOWER



WOODEN PANTRY



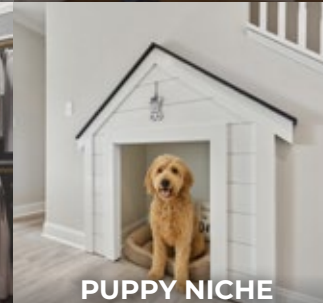
TRIPLE WINDOW SINK



FEATURE WALL



WOODEN RACKS



PUPPY NICHE