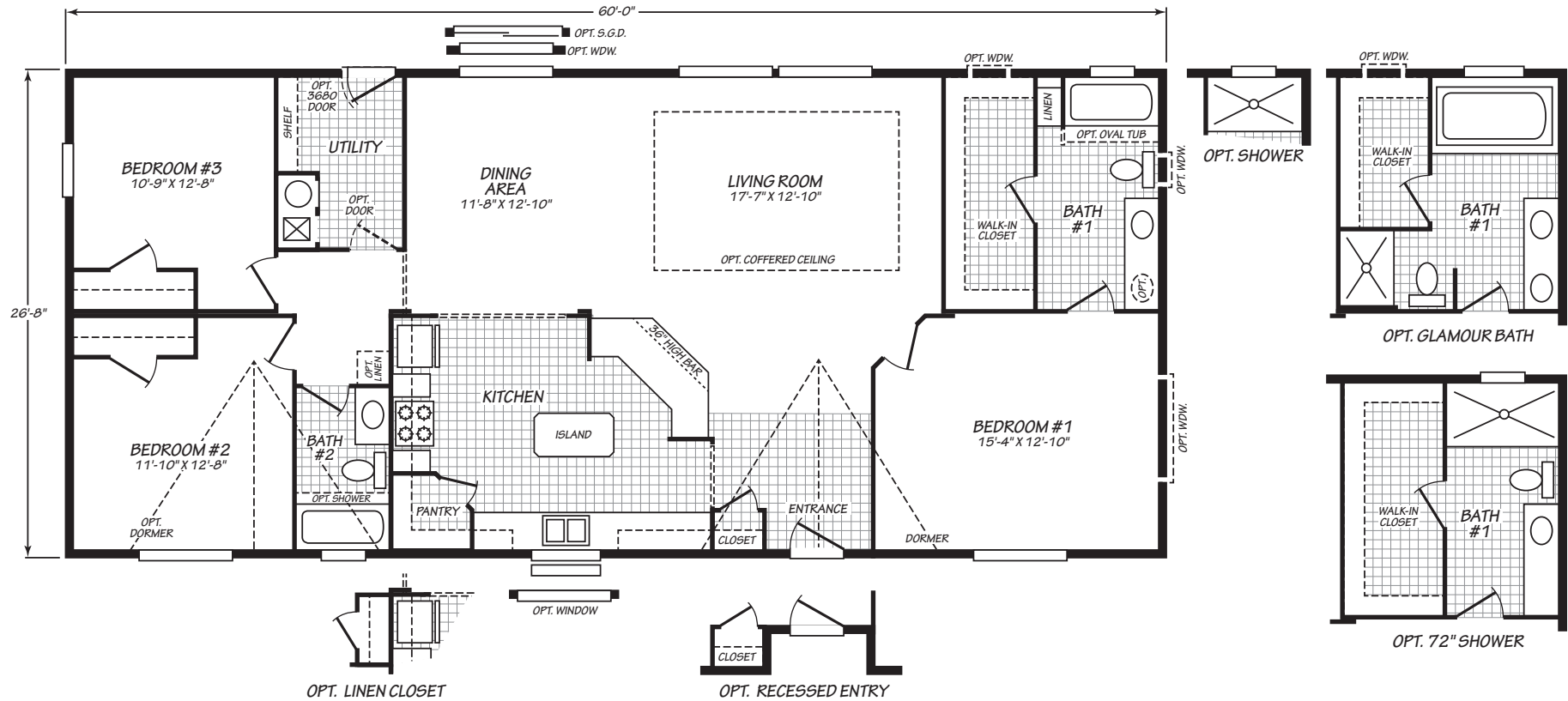




# EVERGREEN

28603E

3 bedroom • 2 bathroom • 1,600 sqft



©2026 CAVCO INDUSTRIES INC. ALL RIGHTS RESERVED. All images are for illustrative purposes only and may include non-standard options. Standard features are subject to change. Contact the retailer or builder for current measurements and features.



Where *exceptional* meets *affordable*.™

EV/210/04SEP25 APPROVAL\_08/29/25

[cavcwoodburn.com](http://cavcwoodburn.com)