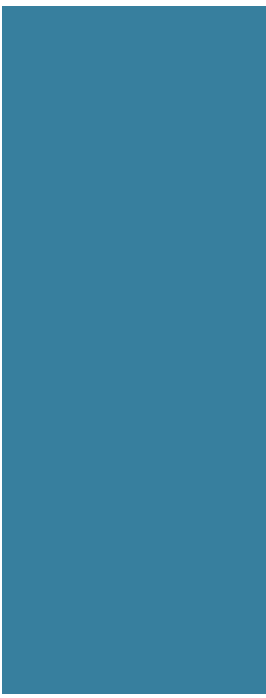




2024 Fairmont Homes

HOME OPTIONS GUIDE





This guide is designed to give you a representation of the many options that are available for your new home from Fairmont. At Fairmont Homes we pride ourselves with the many options we offer so that individuals, like you, can personalize your home in a way that meets your own wants and needs. Some options may not be available in all series or models. Please be sure to check with your local retailer on which options are available in your future home by Fairmont Homes.





Home Options Guide

INDEX

Exteriors

Sectionals	4
Single Wides	5
Shingles and Shutters	6
Siding	7
Exterior Doors	8-9
Windows	10-12

Interiors

Interior Doors	14-15
Flooring	16-18
Cabinetry	19-22
Islands	23
Islands and Other Options	24
Other Kitchen Options	25
Kitchen Sink Options	26
Countertops	27
Tile and Backsplash	28
Bath	30-31
Showers and Tubs	32-34
Drop Zones	35
Fireplaces	36-37
Entertainment Centers	38
Hutches and Desks	39
Utility Cabinet Options	40-41
Other Cabinet Options	42
Other Interior Options	43
Electrical and Lighting	44-46
Appliances	48-51

Sectional Exteriors



Elevation 7*



Eyebrow Gable at Front Door*



Elevation 6



Elevation 8*



Elevation 9*



Elevation 10*



Elevation 13*



Elevation 14 (ship loose only)



Elevation 19

Single Wide Exteriors



Elevation 1



Elevation 2



Elevation 3



Elevation 4



Elevation 5
with Coach
Lights and
Vertical
Siding



Elevation 15



Elevation 16

Shingles and Shutters



Supreme 25 Year Warranty (Standard in HUD)



Onyx Black



Estate Grey



Driftwood



Chateau Green



White



Sandstone



Black



Brown



Royal

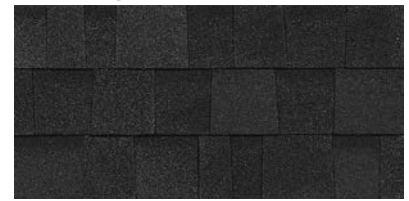


Pine



Berry

Oak Ridge Pro Limited Lifetime Architectural Shingles (Standard in MOD; Upgrade in HUD)



Onyx Black



Estate Grey



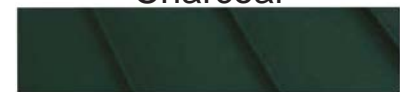
Driftwood

Metal

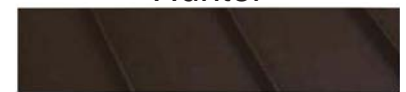
(Only Available in Single Wides and Double Wide 3/12 Roof)



Charcoal

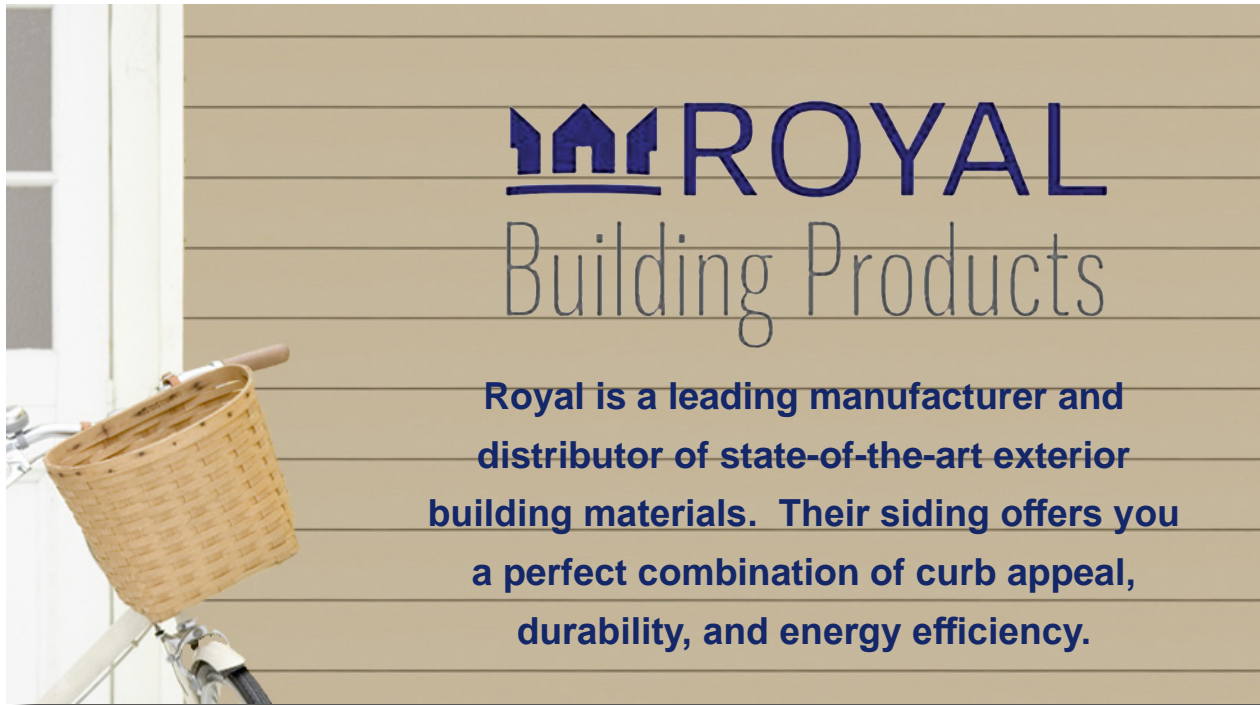


Hunter



Brown

Siding



ROYAL
Building Products

Royal is a leading manufacturer and distributor of state-of-the-art exterior building materials. Their siding offers you a perfect combination of curb appeal, durability, and energy efficiency.

Standards



Cypress



Harvard Slate



Wicker



Pebble Clay



White

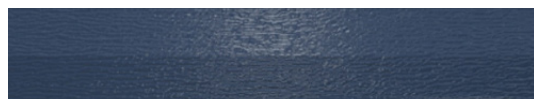
Upgrades



Redwood



Granite



Marine Blue

Exterior Doors

Exterior Doors Available in White Only (excluding 38x82 Fiberglass Woodgrain Door)



**34x82 Decorator
or 38x82
Decorator Plus**



38x82 1-Lite
*(on homes with
2x6 walls only)*



38x82 1/4-Lite
*(on homes with
2x6 walls only)*



**34x82 9-Lite
(and 38x82)**



**34x82 Fire
Rated or 38x82
Fire Rated**



**38x82 Vintage
Craftsman**
*(on homes with
2x6 walls only)*



**38x82 Vintage Craftsman
with Sidelites**
(on homes with 2x6 walls only)

Exterior Doors



**38x82 Fiberglass
Woodgrain**
*(on homes with
2x6 walls only)*



74x82 Swing French Patio Door
(on homes with 2x6 walls only)
(Not applicable on Michigan Mods)



**72x82 Glass Patio Door without
Grids**



**72x82 Glass Patio Door with
Grids**

**Storm Doors are Included with the Following Doors:
Decorator or Decorator Plus or 34x82 9-Lite**

Door Sizes are All Rough Opening Sizes

Windows



60" x 44"
Window

Kinro

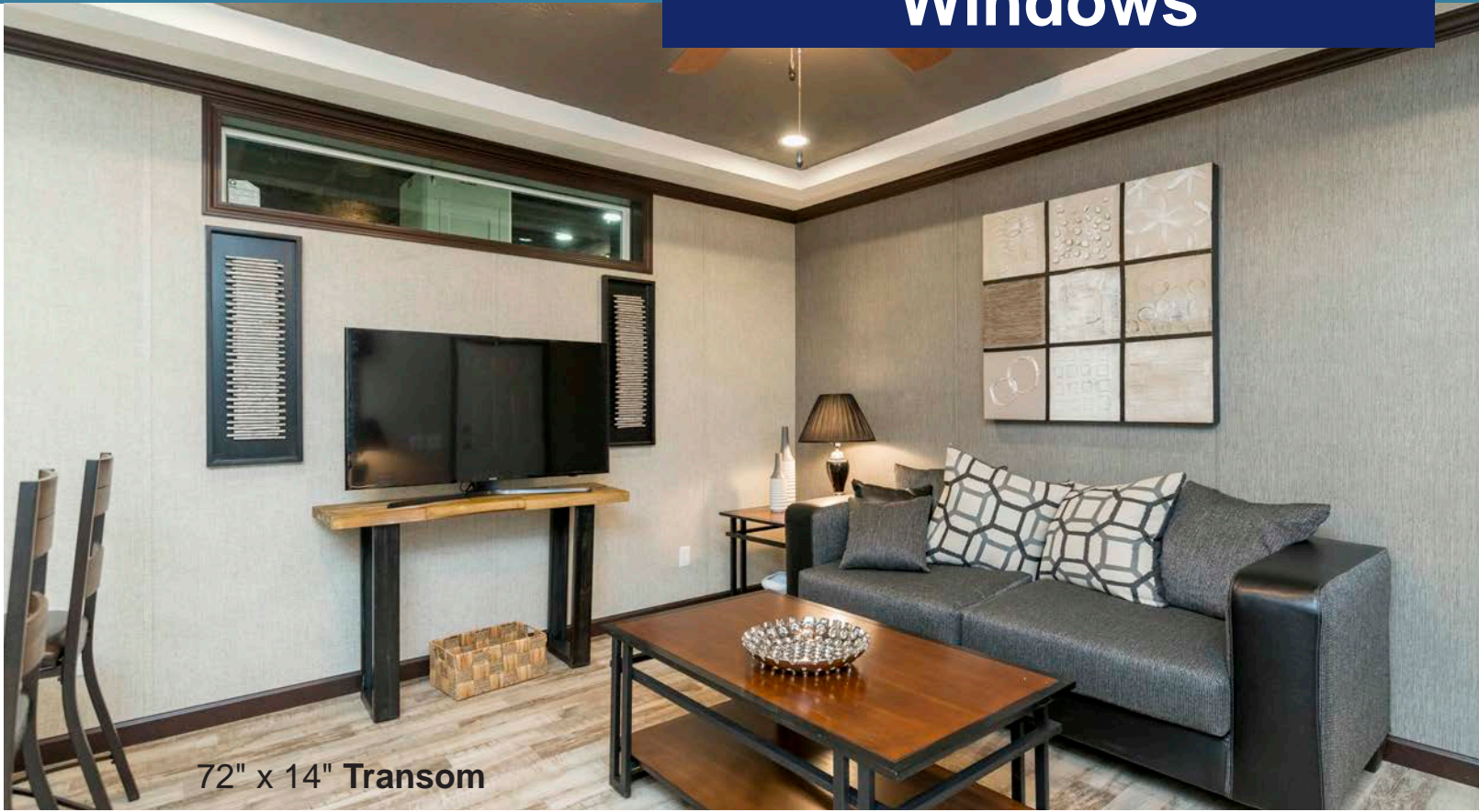
Fairmont Homes offers you high quality Kinro Windows

Easy Clean
Tilt-Out Sash
Single-Hung



60" x 36"
Window

Windows



72" x 14" Transom



47" X 9"
Glass Block Window



94" x 54" Picture Window



32" x 40"
Glass Block Window



14" x 40"



30" x 14" Transom

Windows



**B-297 with Transoms
and Shake Siding**



Lineals

Kimro

Additional
Window Sizes:

HUD

- 30 x 36
- 30 x 60
- 30 x 72
- 46 x 60
- 46 x 72

MOD

- 32 x 36
- 30 x 61
- 30 x 76
- 46 x 61
- 46 x 76

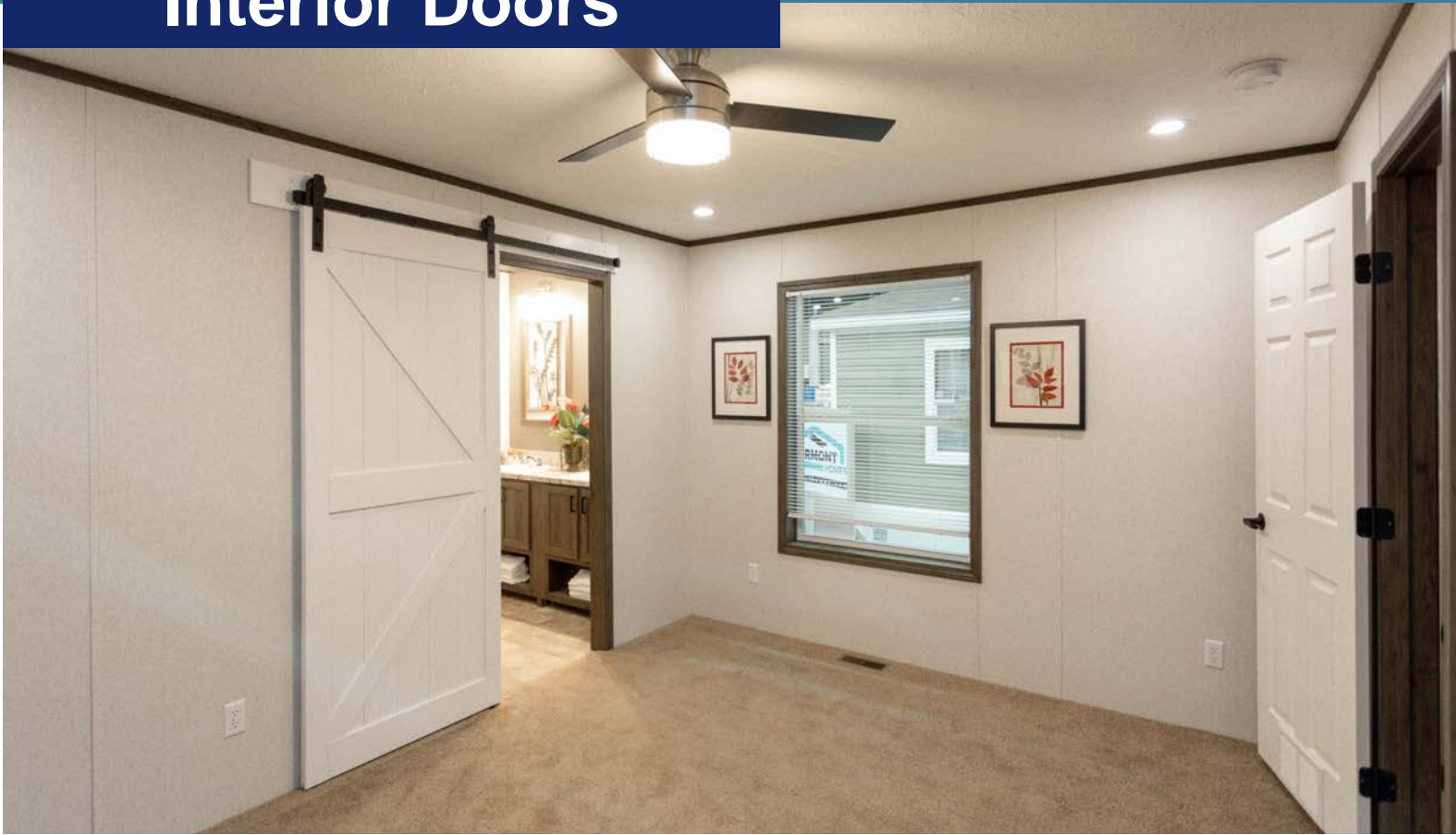


**B-28 Bay on Hitch End
(B-231 Bay on Doorside)**



**Leading the way in manufactured housing
from generation to generation**

Interior Doors



Hardwood Barn Door
Only Available in White
(Space Must Be Available on
Interior Wall for Track)



3 Panel Hardwood Doors
Available in White, Cottage Slate and Vintage

Cottage Slate

Vintage

Interior Doors

6-Panel Masonite Doors



White
Standard in All Series



Cottage Slate
Upgrade in All Series



Vintage
Upgrade in All Series



3-Panel Double Doors

Available in 6 Panel:
White, Cottage
Slate and Vintage
Available in
3-Panel Hardwood:
White, Cottage
Slate and Vintage

Flooring



Take Away
15 oz.
Polyester
(Standard
in HUD)



Truffle

Shake It Up 25 oz. Polyester
(Standard in MOD; 1st Upgrade in HUD)



Rodeo



Silver Smith



Balboa Mist

Flooring



Timber Oak Mustang



Vintage Plank
Cafe Au Lait

1st Upgrade in HUD and MOD

Flooring

Congoleum[®]



Travertino White



Barn Wood Greige



Barn Wood Vintage White



Congoleum LuxFlor is an upgraded flooring option
2nd Upgrade in HUD and MOD



LuxFlor by Congoleum sets a new standard for the manufactured housing industry. LuxFlor by Congoleum offer exceptional durability, contemporary design, and installation flexibility unlike any other flooring available.

Cabinetry

Stonehenge
40" Cabinets



Dove Tail Drawers

Fairmont Homes brings you quality hardwood cabinets.

Hardwood cabinet doors with hidden hinges, hardwood stiles, and dovetail drawers.

Nothing is overlooked in a Fairmont kitchen!

Cabinet Options are available in wrapped and hardwood options.

Standard Cabinets in each product line may vary.

Please contact your retailer for accurate cabinet options for your home of choice.

Cabinetry



Ibis 40" Cabinets

Shaker Cabinet Options

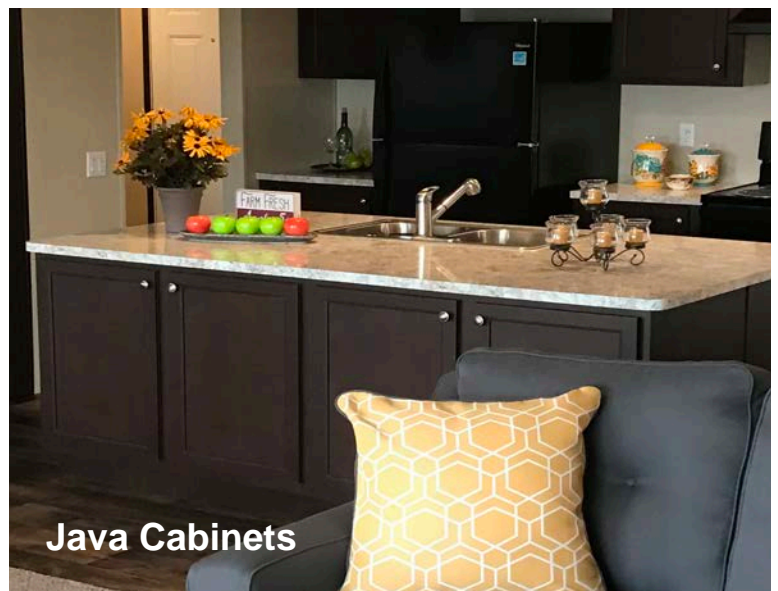
Wrapped Cabinet Options:

Wrapped Cabinets are Standard in all HUD
Wrapped Cabinetry Does Not include Knobs or Pulls



Ibis

Java



Java Cabinets

Wrapped Cabinets Are Available in 2 Options:
Standard Wrapped Flat Panel Doors and Face Frames
Upgraded Hardwood Doors on Wrapped Face Frames

Cabinetry

Hardwood Shaker Cabinets

Hardwood Cabinets are Optional Upgrades in each HUD product Series and Standard in Modular Homes



Cottage Slate



Stonehenge



Rustic Shore



Vintage

Cabinetry



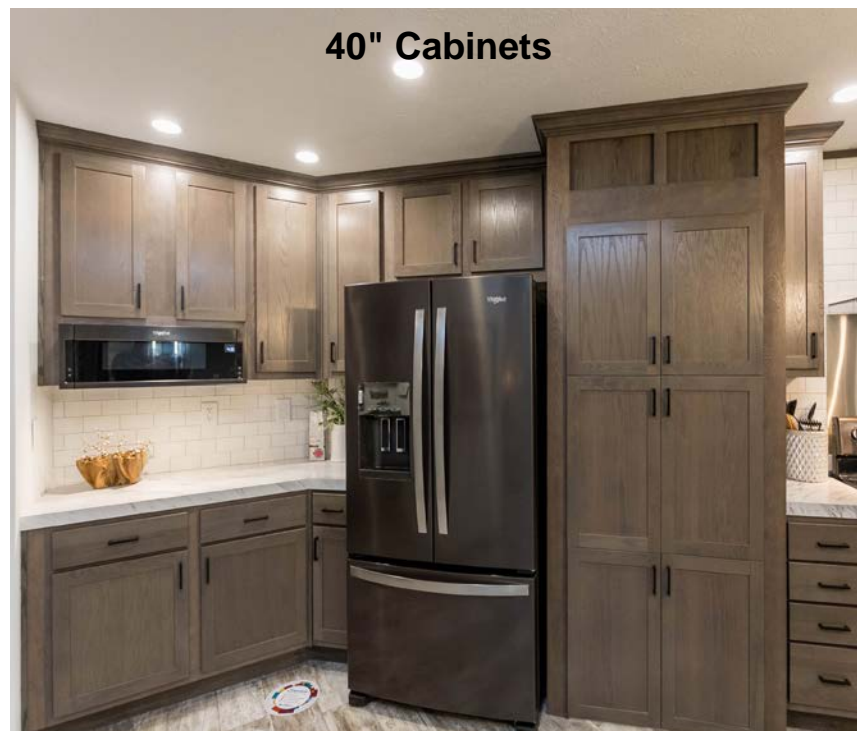
Cabinet Over Refer

Hardwood Cabinetry

Comes Standard with Brushed Nickel Cabinet Knobs in all HUD Series and with Brushed Nickel Cabinet Pulls in Modular Homes



40" Cabinet Over Range with Microwave



Islands

CE-2186 117x30



CE-1374 59x34



Snack Bar CE-1261



CE-1277 96x36



CE-1535 42x75



CE-1248 40x28



CE-2113 132x30
(floor plan must allow space for this island; consult with your Fairmont sales rep for details)



Islands and Other Options



CE-2241
66x42



CE-2298
121-1/2x48



Reclaimed Wood
Optional on Ends of Island



CC-6046
90x36

The Options are Yours with Fairmont

Double Tiered Silverware Drawer



Upgrade Soft Close Drawer Guide



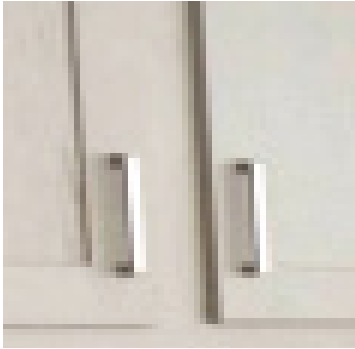
Corner Lazy Susan



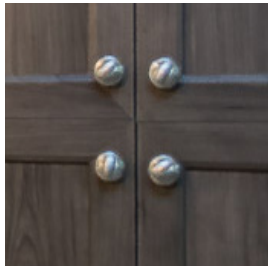
Roll Out Drawer Base



Other Kitchen Options



**Brushed Nickel
Pulls**



**Brushed Nickel
Knobs**



**Built-In Microwave/Oven Combo
with Overhead Cabinets**

**Black Handles
(upgrade)**



Kitchen Sink Options



Farmerhouse Sink with Hi-Arch Chrome Faucet
This sink may require additional engineering



Black Sink with Hi-Arch Black Faucet



9" Deep Stainless Steel Sink



Twin Handle Faucet



Single Handle Metal Faucet with Sprayer



Single Handle Pull Down Faucet in Chrome or Black



Twin Handle Pull Down Faucet

Counter Tops



Counter Tops in Calcutta Marble, Kitchen Island Counter Top in Dolce Vita

Standards



Winter Carnival



Bernard Granite



Bronze Steel



Potter's Clay



Calcutta Marble



Ice Granite

Upgrades



Dolce Vita



Antique Pine



Azul Aran

Solid Surface Upgrades



Pinnacle

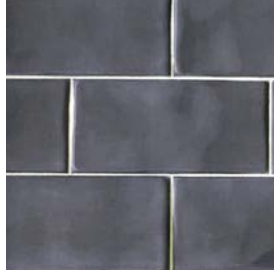


Ocean View

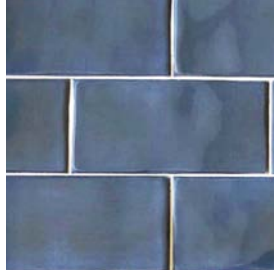
Tile and Backsplash



**Emma White
Subway Tile**
(6" backsplash / full wall
backsplash at kitchen and
hutch / behind range accent)



**Emma Graphite
Subway Tile**
(6" backsplash / full wall
backsplash at kitchen and
hutch / behind range accent)



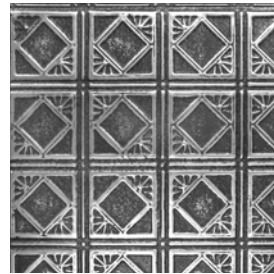
**Emma Steel Blue
Subway Tile**
(6" backsplash / full wall
backsplash at kitchen and
hutch / behind range accent)



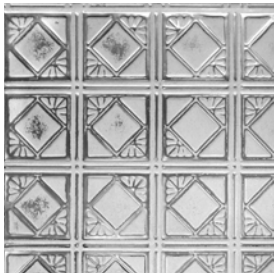
Emma White



**San Francisco
Lombard**
(6" backsplash / full wall
backsplash at kitchen and
hutch / behind range accent /
island front / e-center /
fireplace below mantel)



**Silver Washed
Pewter Tin**
(6" backsplash / full wall
backsplash at kitchen and hutch /
behind range accent / island front
/ e-center / fireplace above &
below mantel)



**Silver Washed
White Tin**
(6" backsplash / full wall
backsplash at kitchen and hutch /
behind range accent / island front
/ e-center / fireplace above &
below mantel)



San Francisco Lombard



Mystic Slate
(behind range accent / fireplace
above & below mantel)



Timberwood
(behind range / island front
/ e-center / fireplace below
mantel)



Blackstone
(island front / e-center /
fireplace surround below
mantel)

**Silver
Washed
Pewter Tin**





**Serving Families
for 50 Years**



Bath



**Twin Handle
Lav Faucet**



**Single Handle Lav
Faucet (Chrome and
Black)**

**Shower
Faucet Set
(Chrome and
Black)**



Bath



**Cabinet Over
Commode**



**Porcelain Lav with
Single Lever Faucet**



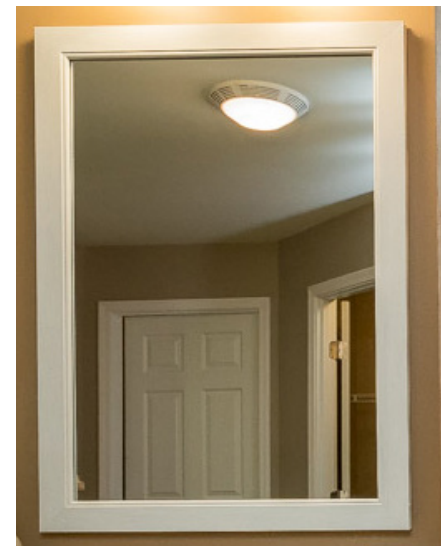
**Single-View
Medicine
Cabinet**



LED Lighted Mirror



24x32 Mirror with Clips



Framed Mirror



Curved Shower Rod with Curtain

Showers and Tubs



60" 1-pc Tub with Shower



60" 2 Seat Shower without Shower Door
available with or without door



48" 2 Seat with Shower Door
available with or without door



60" Bench Shower with Door

Showers and Tubs



**Stainless
Anti-Scald
4-Jet Shower
Panel**



**36x60 Palisades Tile Shower
with Optional Glass Barn Doors**

Stand Alone Tub

1-pc Garden Tub



Showers and Tubs



1 Piece Corner Tub



Shown
with
Jets



Drop-In Ophelia Tub



Jetted Garden Tub

Stand Alone Tubs Cannot be Jetted
Additional Charges Apply for Jetted
Baths



72" Drop-In Tub

Shown with Jets



Drop Zones



Drop Zone CG-412
39" x 21"

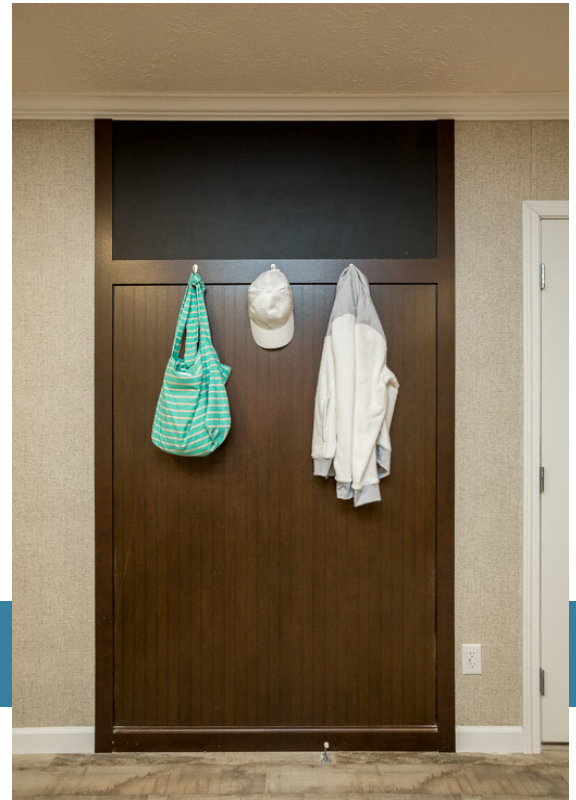


Drop Zone CG-411
48" x 21"



Drop Zone CG-355
39" x 21"

Coat Rack



Fireplaces



Charleston
Stack Ease



Hampton Gray
Ledge Stone
shown w/optional keystone



Hampton Gray
Full Stack Laytite



**Fireplaces are available
in the following options:**

Linear Electric
Gas
Wood Burning

Gas and Wood Burning
Fireplaces **MUST** option in stone

Raised Hearth is Available

**All Surrounds Available in
Full or Half Stack**

Mantles available in the following:

Vintage Rustic Shore
Cottage Slate Stonehenge

Fireplaces

Shown with Blackstone Surround



Linear Electric Fireplace



Shown with San Francisco Tile Surround Trimmed in Reclaimed Wood

Entertainment Centers



84" Floating Entertainment Center
 (FEC841616) with 2 33Wx94Hx12D
 Bookcases (BC 429412)

(Reclaimed Wood is an additional option
 — See Reclaimed Wood Option on Page
 43 for Current Color Selection)



153" Entertainment Center
 (CE-2309)

(Reclaimed Wood is an additional option
 — See Reclaimed Wood Option on Page
 43 for Current Color Selection)



92" Floating Entertainment Center
 FEC921616 (HUD Only)



84" Floating Entertainment Center
 (FEC841616) with (2) 33W x 94H
 Bookcases (BC 339412)

(Reclaimed Wood is an additional option
 — See Reclaimed Wood Option on Page
 43 for Current Color Selection)



48" Entertainment Center
 CE-2036

48x42 Entertainment Center
 CE-2006



Hutches and Desks



**42" Hutch with
Cubbies CE-2299**



**Buffet with Mirror
VB4218FBH**



**54" Hutch
CE-2198**



**69" Desk
CE-2338**



**Entry
Cabinet
CE-2340**



**54" Utility Desk
CE-2097**



**64" Planning Desk
with Drop Zone
CE-2300**



**72" x 19" Desk
CE-2112**



**Desk with Cabinets
CE-1443**

Utility Cabinet Options



Shelf Above Washer and Dryer



(2) 15x30 Cabinets with 30" Bar CE-1297



(2) 15x30 Cabinets with 30x15 Center Cabinet and Hanging Rod WD-T5 for top load



60" Deep Sink CB-772

**51" Deep Sink CB-790
51" Deep Sink with Sink on Left Side CB-779**



51" Deep Sink with Overhead Cabinet CB-1151

Deep Sink Cabinetry CB-1182 with Optional 15" Overhead Cabinets



Utility Cabinet Options



87-1/2" Deep Sink Cabinetry
CB-1006



123" Deep Sink Cabinetry CB-1145



85-1/2" Deep Sink Cabinetry
CB-1186 with Pantry P248427

36" Deep Sink with Overheads



77" Utility Station CE-2355



36" Deep Sink SB-36
Also Available in:
27" • 30" • 33"



72" Deep Sink Cabinetry
CB-1200



Twin Handle Utility Faucet



Other Cabinet Options



BC278012



BC308212



BC339412



BC398012



BC429418

Bookcase and Linen Codes are read as follows:

BC308212 = 30 Length, 82 Height, 12 Depth

Homes ordered with hardwood cabinets will have hardwood bookcases; Homes ordered with wrapped kitchen cabinetry will have wrapped face frames on the bookcase



Linen Cabinets in Multiple Sizes

Other Interior Options



**Tray Ceiling with
Cottage Slate
Beams**

Tray Ceilings
Available in Mods Only



Tray Ceiling with Vintage Beams



Tray Ceiling without Beams



**Panel Box Cover
Stonehenge Only**



Multi-Tone

**Reclaimed
Wood
Accent
Wall**



Solid Tone

Electrical and Lighting

Exterior



Rust Coach



Craftsman Coach



**Lighted
Bathroom
Vent**



LED Can Lights



**USB Charging Dock
TV / Cable Jack
Phone Jack
Incon Recept**



**Additional Options
Not Pictured:
Extra Interior Recept
Extra Exterior Recept**



2-Bulb Dome Light

Electrical and Lighting

Interior



3-Bulb Cosmetic Light
Standard Lav Light (HUD)



Driftwood Sphere Chandelier

Addison Metal 14" Pendant



Lantern Light



2-Light Lav Fixture
Standard Lav Light (MOD)

The Waddington Collection

Brushed Nickel with Seeded Glass



5-Arm Chandelier



3-Arm Chandelier



Pendant

Electrical and Lighting

The Franklin Collection

Black Finish



Single Light



Pendant

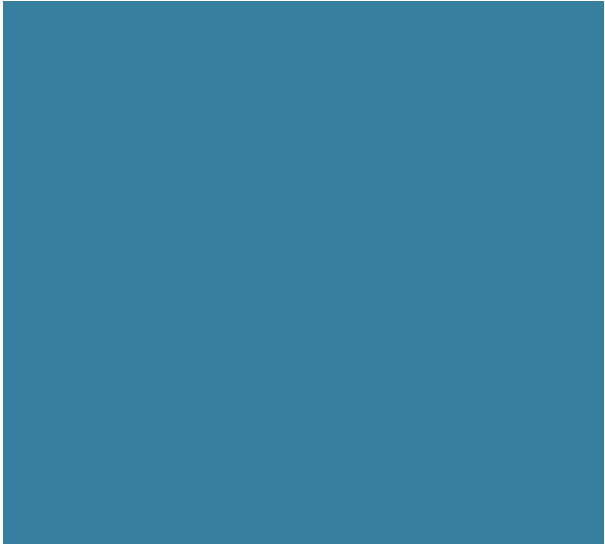


2-Light Lav Fixture



Ceiling Fan
3-Blade Fan with
Reversible
Black or White Blades





Appliances

Fairmont Homes is proud to offer you a wide range of Whirlpool Appliances



Refrigerators



Right - **Icemaker Kit** for 18 CF Model Refrigerators



Left - **18 CF Top Freezer** in Stainless Steel

Right - **21 CF with Ice and Water Maker in Door** in Stainless Steel



Appliances

Gas Ranges



Left - **Standard Clean 5 Burner**
in Stainless Steel



Right - **Self-Clean 5 Burner**
in Stainless Steel



Left - **Self Clean Ceramic Top**
in Stainless Steel

Electric Range



Appliances

Cooktop



Left - 30" Black
Electric Cooktop
Ceramic

Right - 30" Black
Gas Cooktop



Electric Wall Oven / Microwave Combo

6.4 CF Electric Wall Oven /
Microwave "Smart" Capability
in Stainless Steel



Built In Microwave



Left - 1.6 CF 1200 Watt Sensor
Cook Microwave for over
Wall Oven in Stainless Steel

Right - Microwave Trim Kit in
Stainless Steel



Over-the-Range Microwave

1.1 CF Low Profile Micro/Hood
in Stainless Steel



Appliances

Dishwasher



Dishwasher
in Stainless Steel

Washer / Dryer

Amana

Amana Washer and Dryers

(Available in White Only)

- 3.5 CF Top Load Washer with Agitator
- 6.5 CF Electric or Gas Dryer



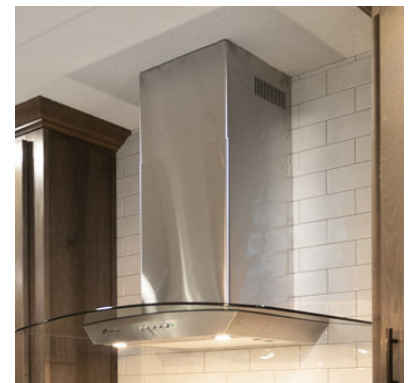
StoneCrest

Range Hood



Range Hood

- Left - Euro Stainless Steel
- Right - Glass Canopy Stainless Steel



CULTURE OF

CONTINUAL IMPROVEMENT

In 1971, Fairmont Homes began building value for homeowners in Nappanee, Indiana. From our beginnings, we have been devoted to using solid construction and high-quality components. We adhere to our standards to provide long-term durability and peace-of-mind to our homeowners, while offering a fresh, modern look and a warm, comfortable aesthetic.

In 2015, we joined an even larger family of companies through our acquisition by Cavco Industries. Cavco, based out of Phoenix, Arizona, is one of the largest producers of manufactured homes, park models RVs, and modular homes in the United States.



As Cavco has expanded by acquiring properties nationwide, we will continually improve and grow for the benefit of our company, our employees, our dealers, our communities, our parks, and our home owners. We are always innovative with new ideas, aware of keeping costs lower for our end users, and perceptive of our processes to retain quality in all we manufacture.



2181 East Market Street
Nappanee, IN 46550

■
fairmonthomes.com

Fairmont Homes reserves the right to make changes in price, colors, materials, components, and specifications and to discontinue models at any time; without notice or obligation. Fairmont Homes assumes no responsibility for any error in type or print reproduction of specifications in this brochure.

©02/2024 Fairmont Homes LLC, ALL RIGHTS RESERVED