

# *Elite*

---

## COMMODORE BLAZER

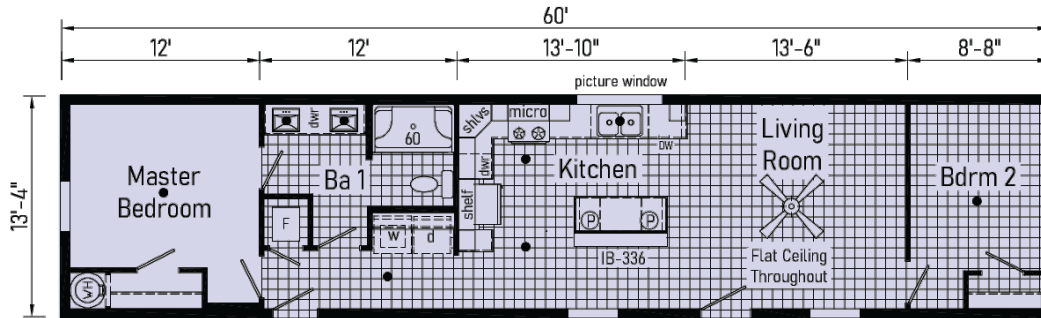


# Elite 1

**BZ14602F**

800 sqft

1460



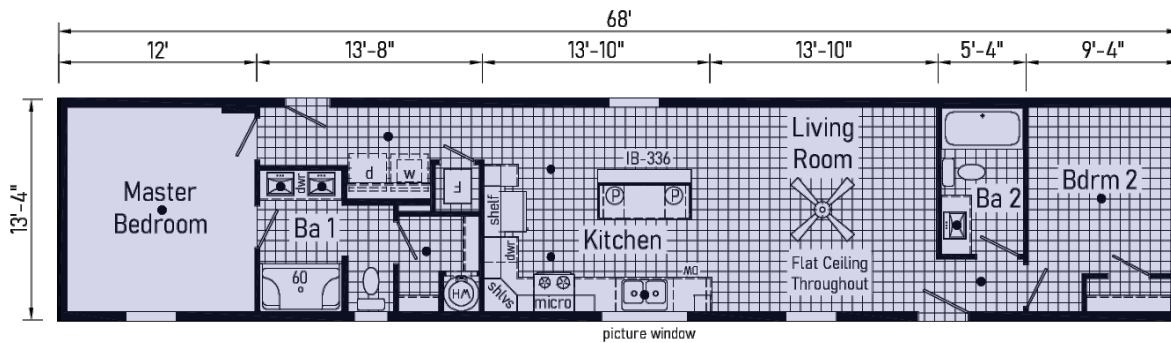
Scan to  
Watch Video!

907 sqft

1468

**BZ14682C**

# Elite 2

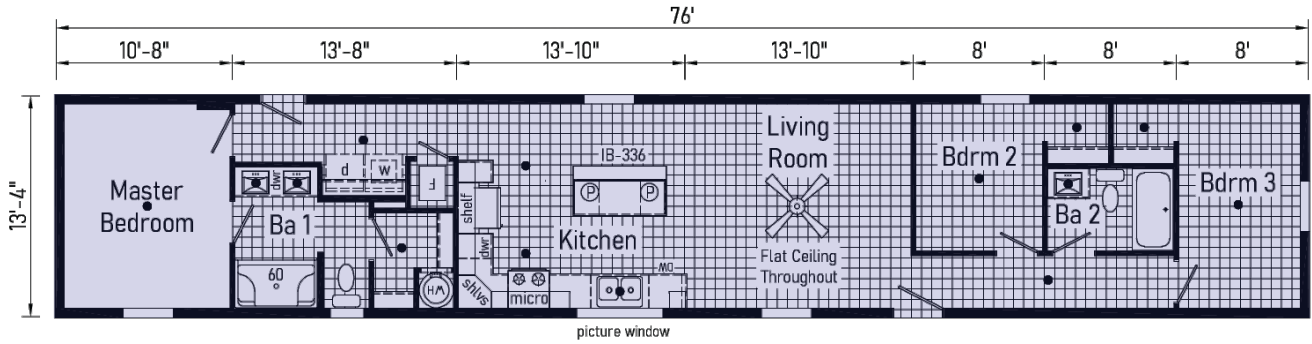


1013 sqft

1476

**BZ14763B**

**Elite 3**



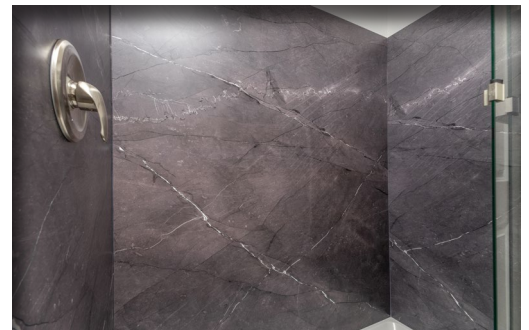
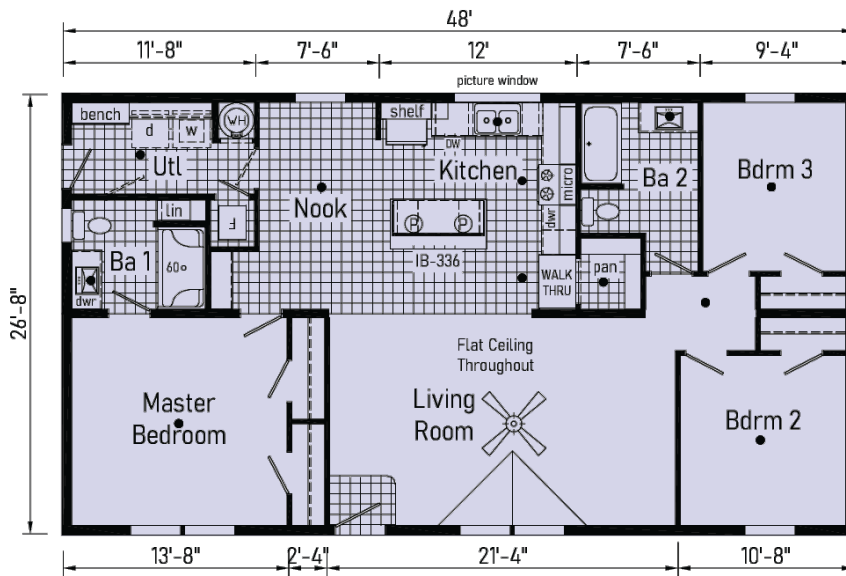
Scan to  
Watch Video!

**BZ28483E**

1280 sqft

2848

**Elite 4**



# Elite 5

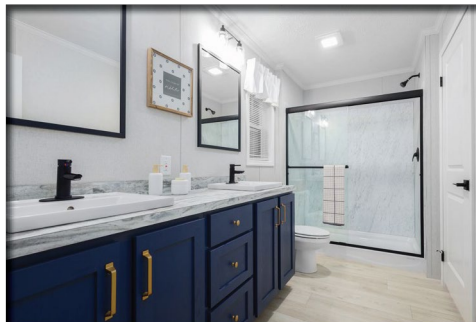
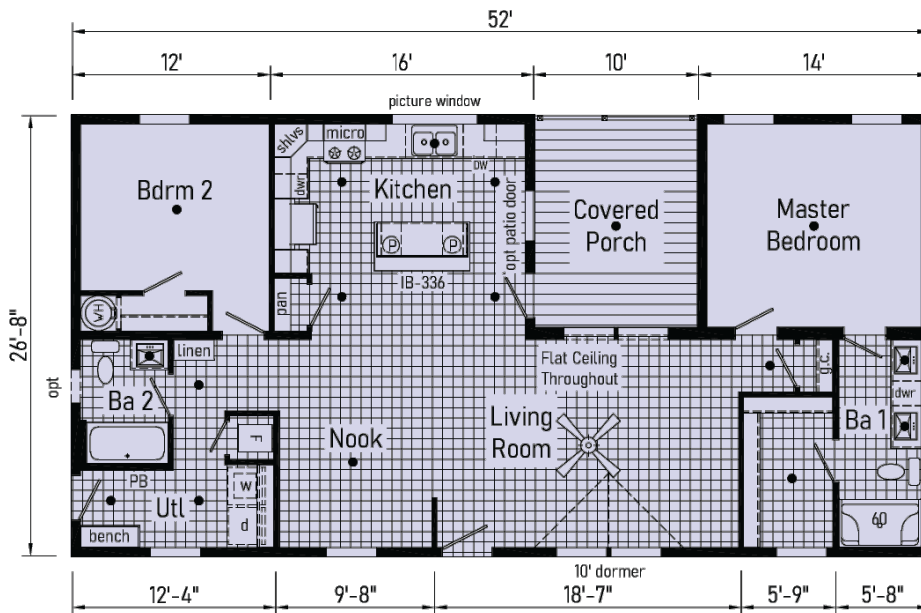
**BZ28522A**

1253 sqft

2852



Scan to  
Watch Video!



1387 sqft

2852

**BZ28523C**

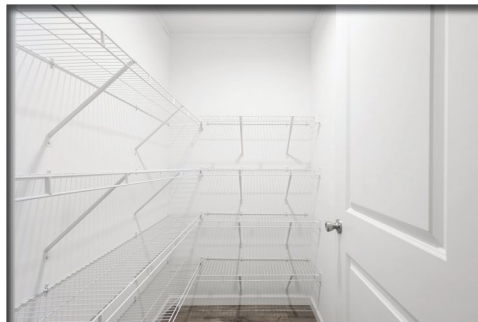
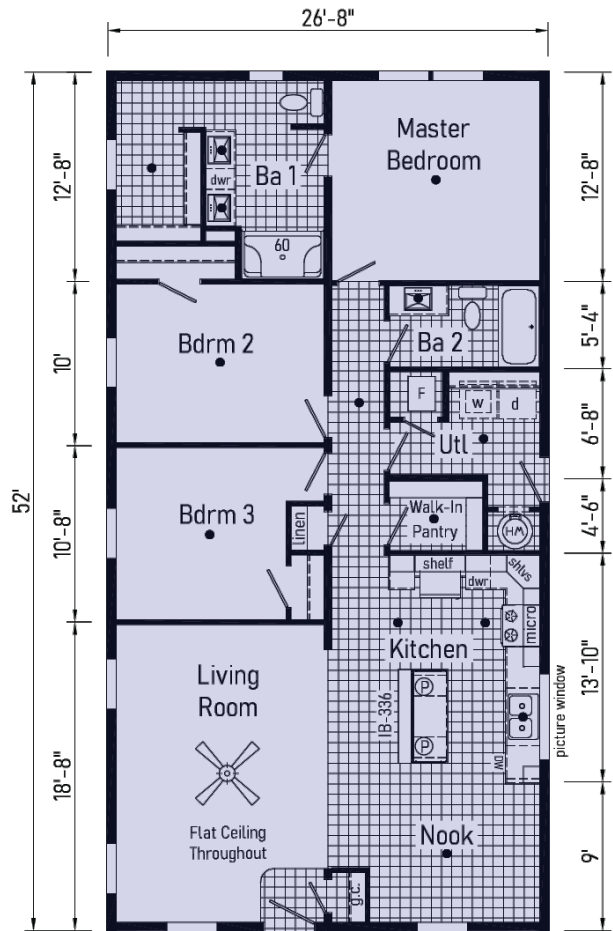
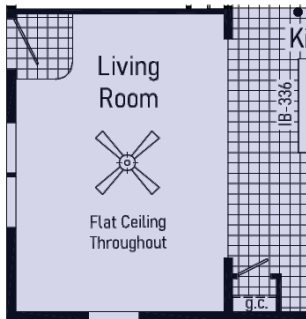
**Elite 6**



Scan to  
Watch Video!



Alternate Front Entry



# Elite 7

**BZ28563E**

1475 sqft

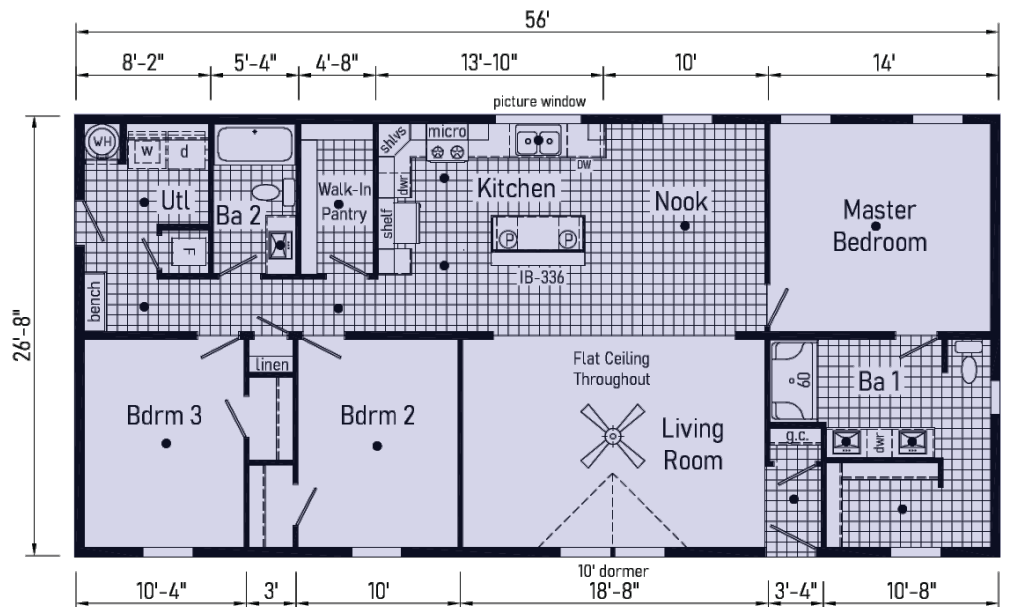
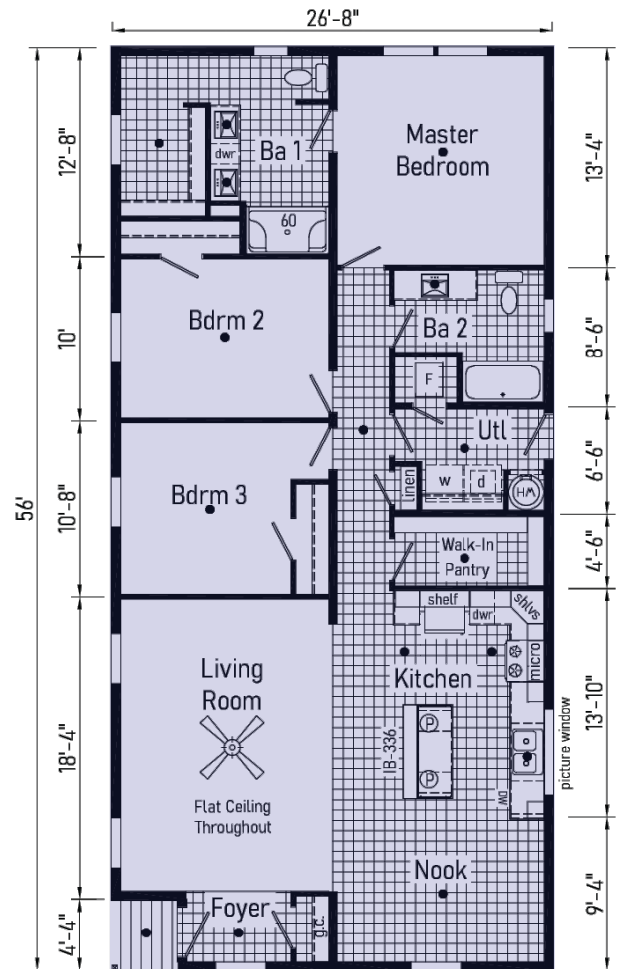
2856

# Elite 8

1493 sqft

2856

**BZ28563F**

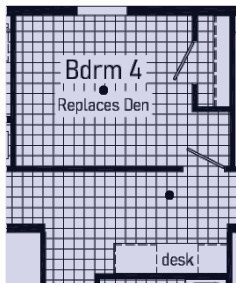
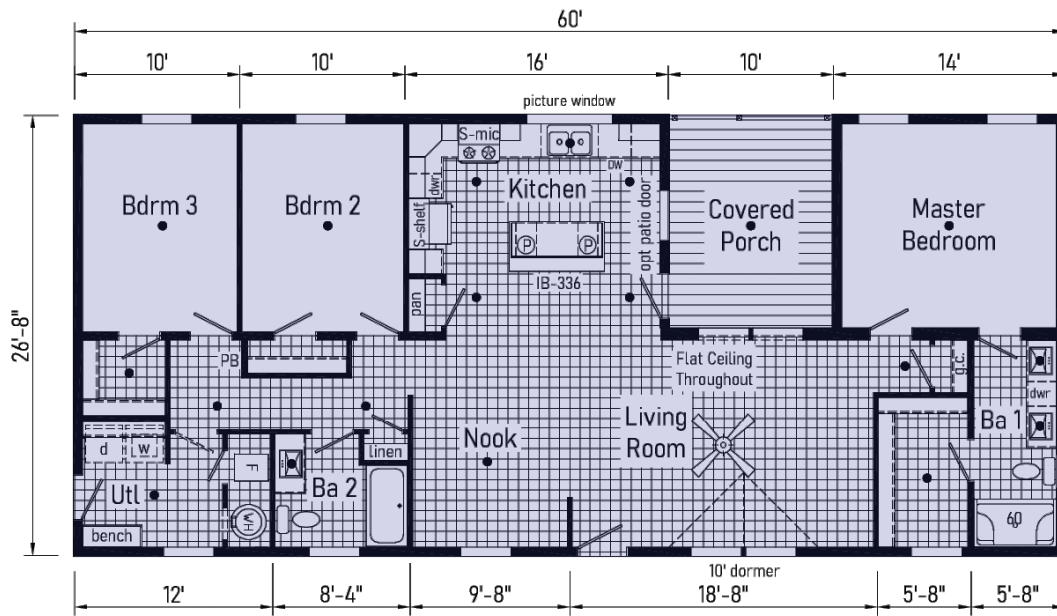


1471 sqft

2860

**BZ28603C**

**Elite 9**



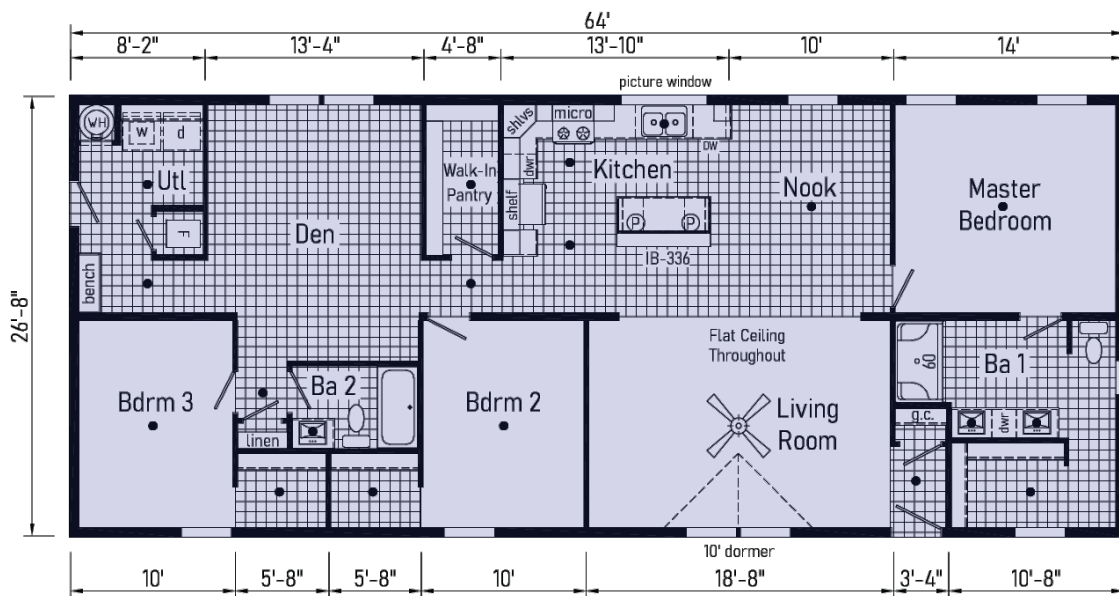
Optional  
Bedroom 4 with  
Desk at Hall

**Elite 10**

**BZ28643B**

1707 sqft

2864





Your Independent Retailer is:

20898 Paint Blvd  
Shippenville, PA 16254  
(814) 226-9210  
[www.commodore-pa.com](http://www.commodore-pa.com)



[www.commodore-pa.com/inhouse-experience](http://www.commodore-pa.com/inhouse-experience)



CONNECT WITH US:



Your purchase contract, including options, is with your retailer who is an independent contractor, not our agent, and who is responsible totally for any alterations, exchanges, additions or attachments made in or to your home.

All descriptive representations of the products on this brochure are believed to be correct at the time of publication. However, due to continued product improvement and changes in suppliers, design and production, accuracy cannot be guaranteed. Therefore, equipment, colors, material specifications, prices and model availability are subject to change without notice. All information and images contained in this brochure are property of Commodore Homes and for the use by active dealers of the company only. © AP124653 3/25