





## Pure Series

Built-In Value  
Right From the  
Start!



# Pure Value Every Time

Architectural Shingles

38" x 82" Six Panel Steel Front Doors

Full View Glass Front Storm Door

Shutters on Front Door Side and Hitch End

Transom Windows in Living Room and Bath Area

40 Gallon Hot Water Heater

Water Shut Offs at all Sinks and Commodes

8' Flat Ceilings Throughout

Fiberglass Tub/Shower Unit in Bath

36" Height Bath Vanities

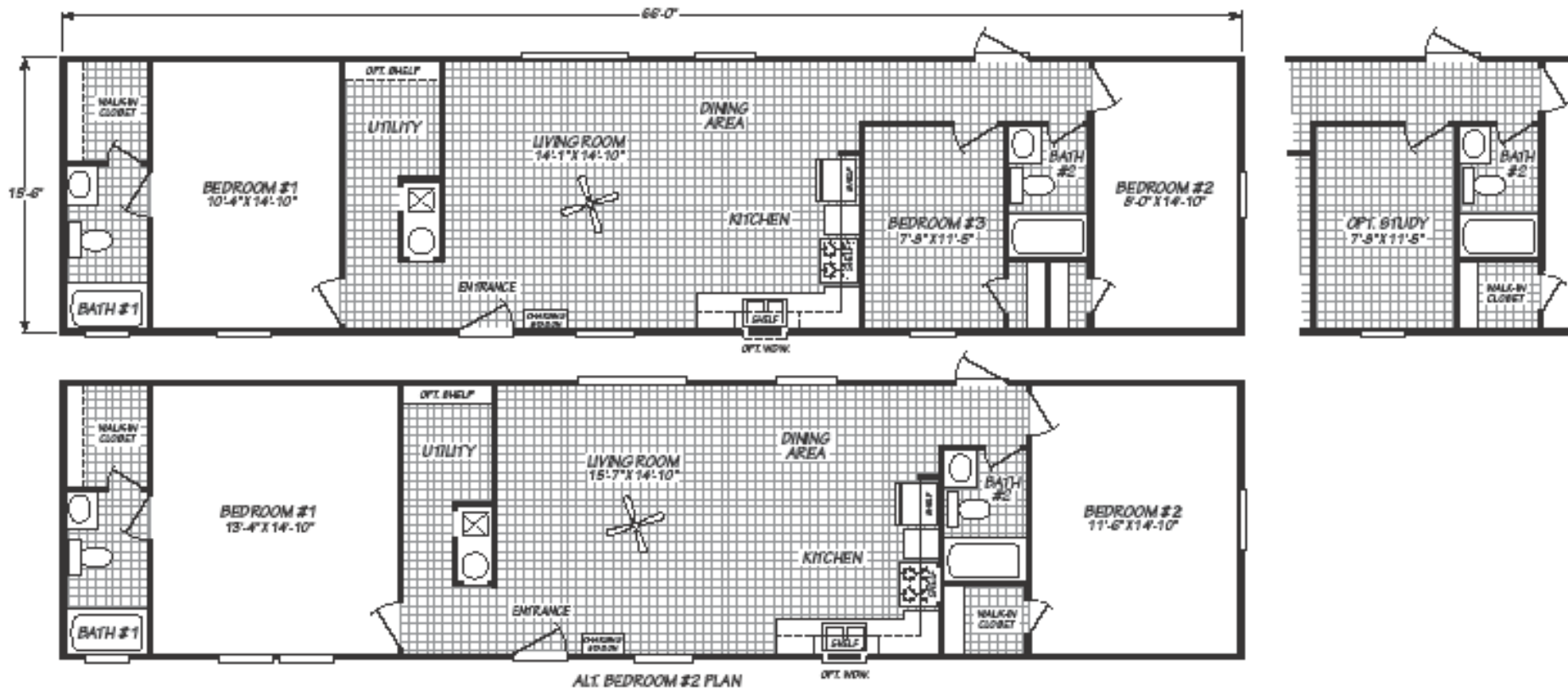
Elongated Raised Height Commodes

Porcelain Bath Sinks

LED Recessed Lighting

Ceramic Tile Backsplash at all Countertops

# PURE HOMES



## MODEL 16663U

3 Bedroom • 2 Bath • 1,023 Square Feet

©2023 FLEETWOOD HOMES INC. ALL RIGHTS RESERVED

Important: Because we continually update and modify our products, it is important for you to know that our brochures and literature are for illustrative purposes only. ILLUSTRATIONS MAY SHOW OPTIONAL FEATURES. All information contained herein may vary from the actual home we build. Dimensions are nominal length and width measurements and from exterior wall to exterior wall. We reserve the right to make changes at any time, without notice or obligation, in prices, colors, materials, specifications, features and models. Please check with your retailer for specific information about the home you select.

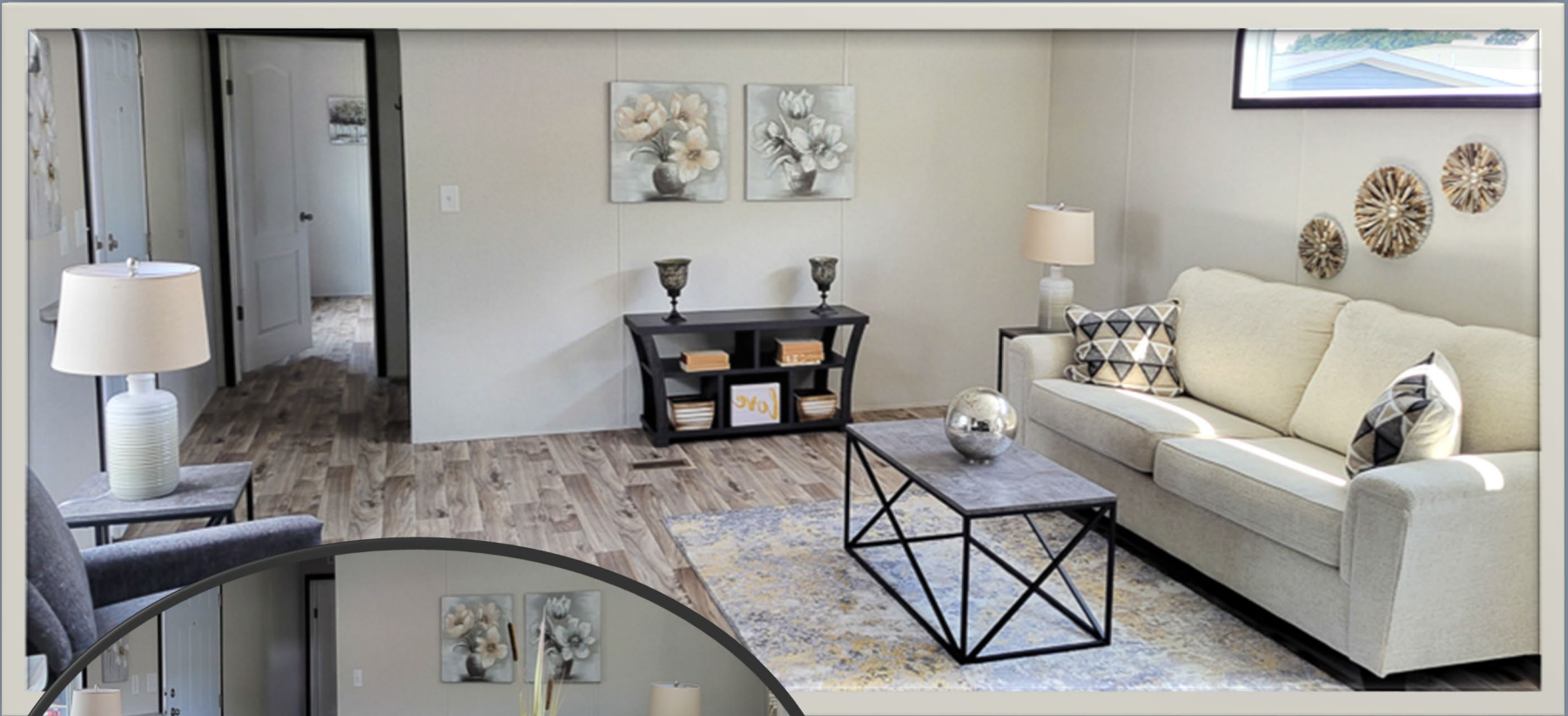




\*Décor Items Pictured Are Not Included

Stainless Steel Appliance Option Available





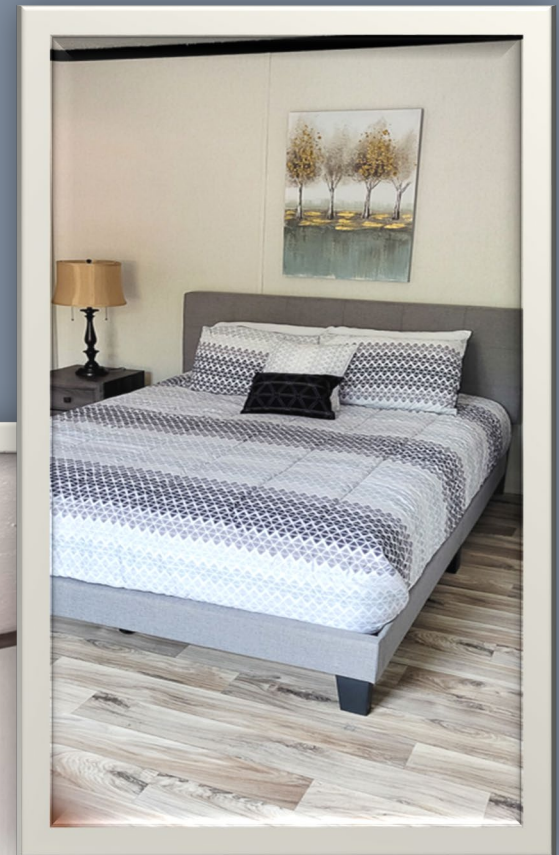
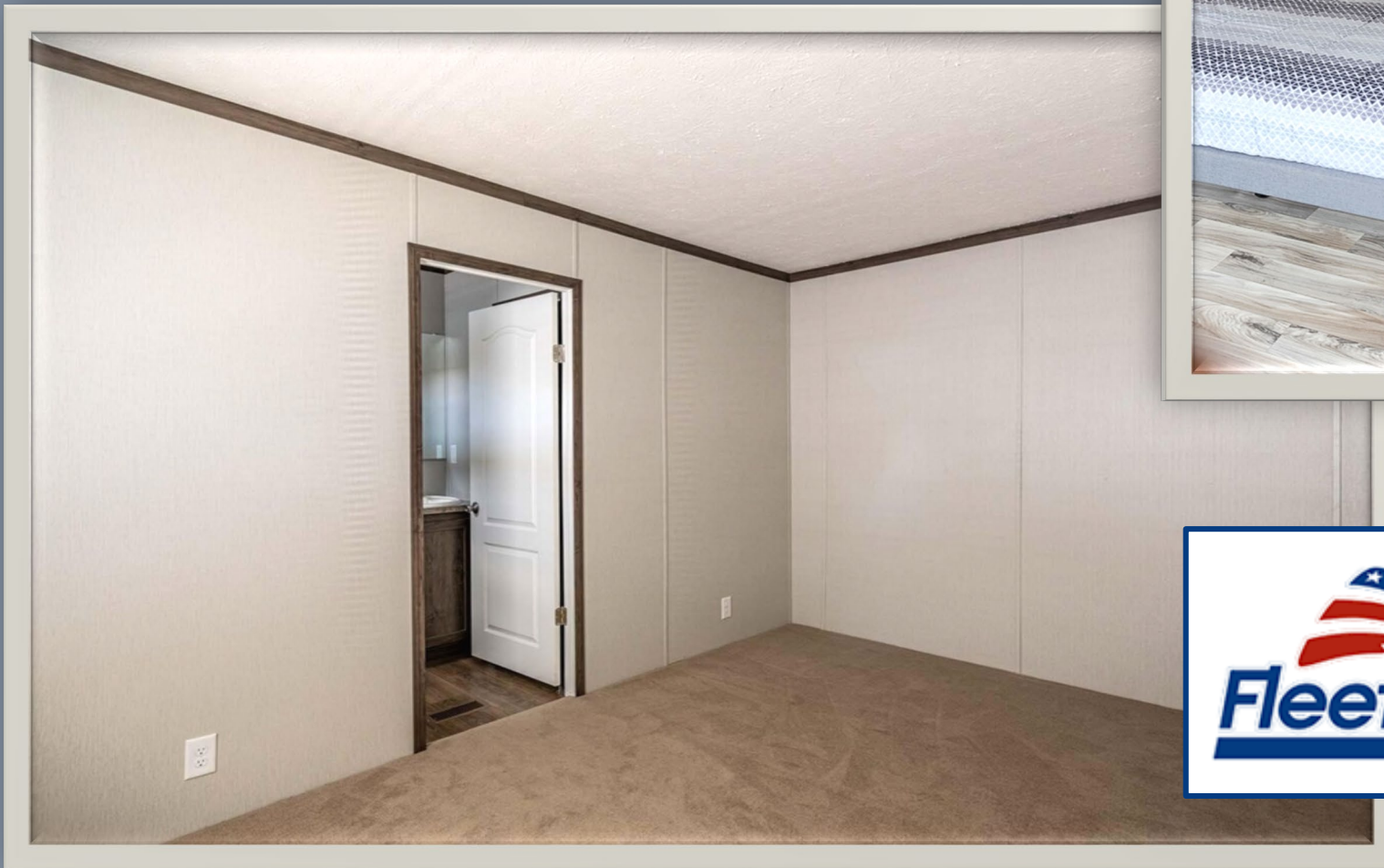
# Open Living Area Design With Natural Lighting



\*Décor Items Pictured Are Not Included

# Bedroom #1 and #2 Comes Standard With 25 oz. Shaw “Shake-It Up” Carpeting

Linoleum is optional in both bedrooms.



# Baths

Fiberglass Tub/Showers  
Elongated Raised Height Toilets  
Porcelain Sinks



\*Décor Items Pictured Are Not Included

Optional  
Walk-In Shower  
With Glass Doors  
Is Available





## Pure Series 16663U Standards

### FLOORS/PLUMBING

- Recessed Chassis – 5 Axles
- Removable Hitch
- R22-11-11 Insulation
- 40 Gallon Water Heater
- Water Shut Offs at Sinks and Commodes
- 54" Fiberglass Tub/Shower Both Baths
- Elongated Raised Height Commodes
- Install Dryer Vent Through Floor

### CABINET SHOP

- 42" Kitchen Overhead Cabinets
- Lined Overhead Kitchen Cabinets with 2 Fixed Shelves
- Lined Base Cabinets with Center Shelf
- Black Vented Rangehood
- Single Shelf Over Refrigerator
- Cabinet Over Range
- Post Form Countertops
- 36" Vanity Height All Baths
- 8" Double Bowl Stainless Steel Kitchen Sink
- Square Porcelain Sinks All Baths
- Brushed Nickel Single Lever Coil Spring Kitchen Faucet

### WALLS

- 8' Flat Ceilings

### ELECTRICAL

- Jelly Jar Style Exterior Lights
- 6" Recessed LED Lights Throughout
- (1) Recessed LED Lights Over Sinks in Master Bath and (1) in Guest Bath
- White Ceiling Fan in Living Room
- Exterior GFI Receptacle

### EXTERIOR

- Hardi-Board Fascia
- Foam Core Backer Board
- 38" x 82" Six Panel Steel Front Door with Composite Jamb
- 34" x 80" Cottage Rear Door
- Vinyl Low E Thermal Windows
- 30" x 8" Transom Window Over Tub in Master Bath
- 72" x 15" Transom Window on Back Door Side Wall of Living Room
- Shutters Front Door Side and Hitch End

### TRIM

- MDF Shaker Cab Doors with Satin Nickel Hardware and Hidden Hinges
- (1) Row of Ceramic Tile in Kitchen and Baths
- White 2 Panel Interior Doors
- Furnace Access Door
- 2.5" Flat Molding at Ceiling
- 1" Batten - Wall Color - in All Linoleum Areas
- Lip Casing around All Windows
- Door Casing around All Doors
- Matching Cabinet Crown on All Overhead Cabinets
- Wire Utility Shelf at Washer/Dryer Area
- 2" Mini Blinds Throughout
- 4" x 24" Stile Matching Trim Color in Baths for Robe Hooks
- 25 oz. Carpet with Re-bond Carpet Pad

### FINAL

- Refrigerator – 18 CF – Black
- Range – Electric Coil Top – Black
- Accent Panel Over Water Heater with Coat Rack- 3 Hooks
- (2) Robe Hooks in Master & Guest Bath
- Full View Glass Storm Door Shipped Loose with Hardware for Front Door