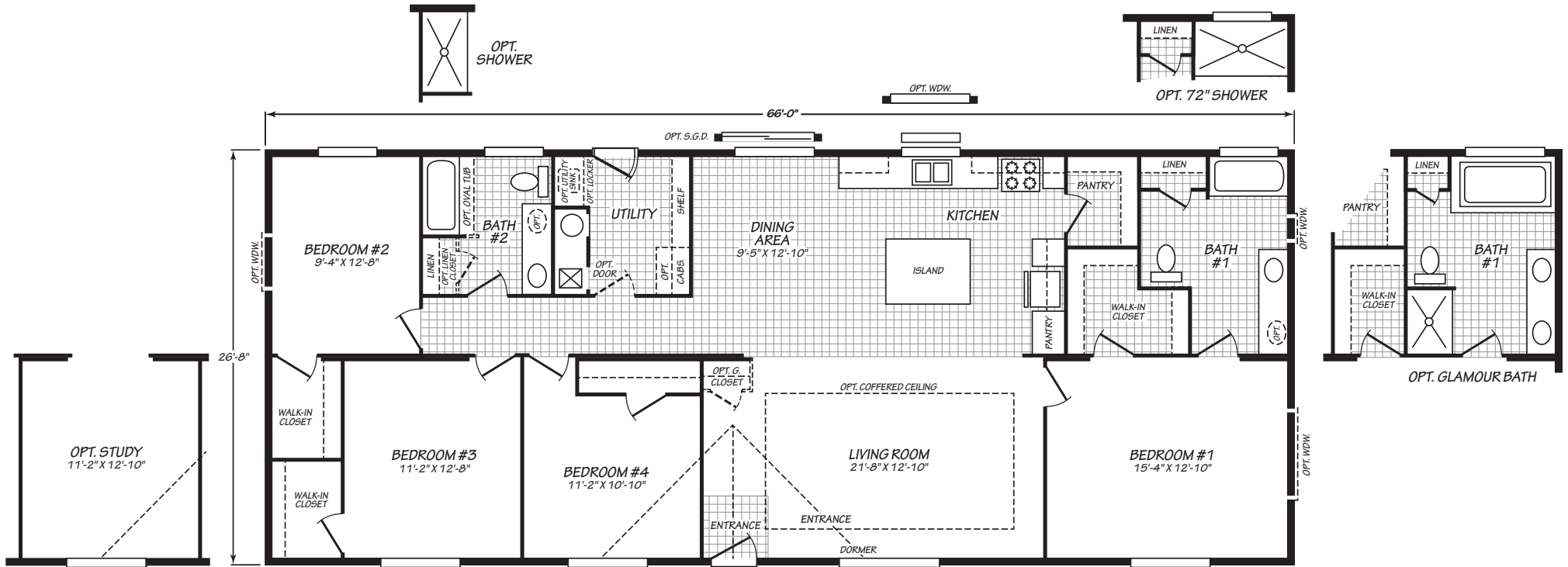




# EVERGREEN

28664E

4 bedroom • 2 bathroom • 1,760 sqft



©2026 CAVCO INDUSTRIES INC. ALL RIGHTS RESERVED. All images are for illustrative purposes only and may include non-standard options. Standard features are subject to change. Contact the retailer or builder for current measurements and features.



Where *exceptional* meets *affordable*.™

EV/210/10FEB26 APPROVAL\_01/28/26

[cavcwoodburn.com](http://cavcwoodburn.com)