

Inspiration Single



Friendship HOMES

QUALITY

Friendship Homes has been named the manufacturer of the year for nearly a decade, we believe this is because of our high quality standards that are so important to us. Our homes are built in a controlled factory environment, reducing waste, and leaving a lower impact on the environment than traditional site built homes. They are built in less time and more efficiently than many other homes. High quality, cutting edge construction have been our priority since Friendship Homes began construction of homes in 1982. Since then, they have built thousands of homes for happy families.

STYLE

Our homes are built with style in mind. Our designers take the latest trends, and combine them with timeless design to bring you a home that is as beautiful as any stick-built home. We offer many finishes for countertops, cabinets, walls and flooring. You also have the option to choose from other available finishes so that you are able to make your new home feel like just that – home.

LEARN MORE

Floorplans, specifications, options and swatches are subject to change, see home specialist for most recent floorplans. Homes shown in photos may not be available. More detailed floor plans are available on our website. Visit friendshiphomesmn.com for more information.

Dozens of other floorplans that are not shown in this book, are available for factory order from Friendship Homes. See home specialists for more home options and floorplans. Visit friendshiphomesmn.com for more information.





Visit our website for more photos of our homes.

There are many options to choose from for selecting countertops, cabinets, walls, flooring and fixtures to personalize your new home.

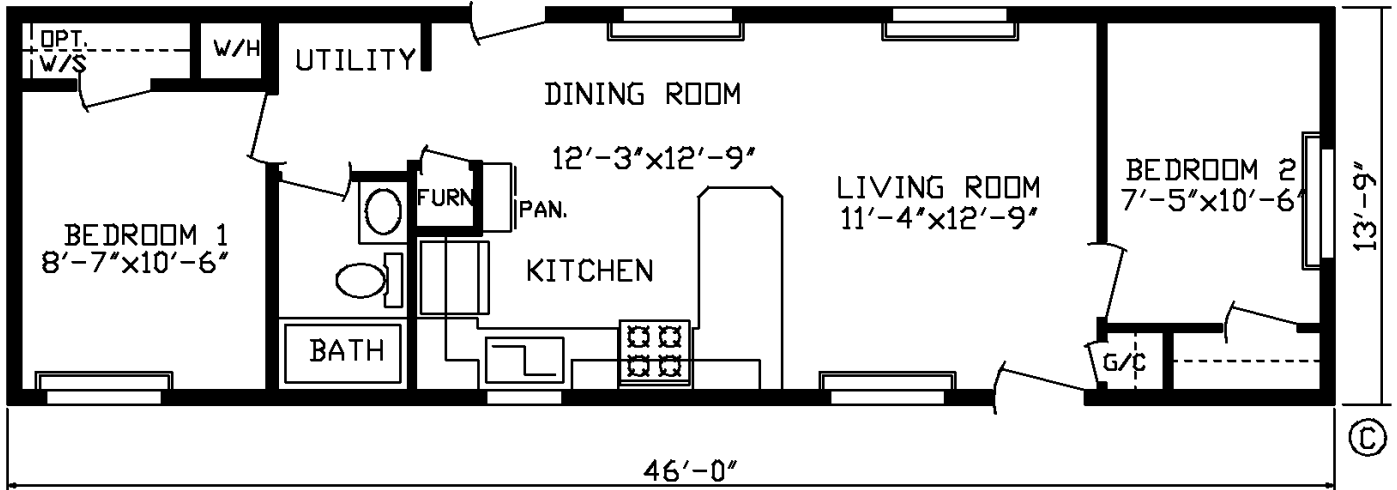


Model #184526

50' x 14' • 633 sq. ft.

2 Bedroom

1 Bath

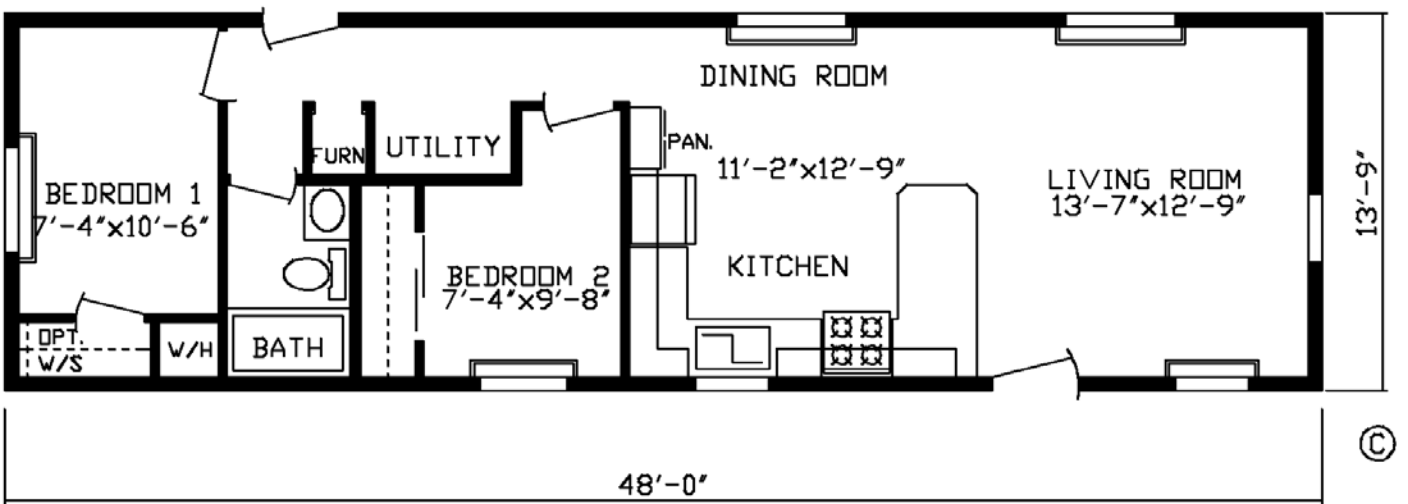


Model #184525

52' x 14' • 660 sq. ft.

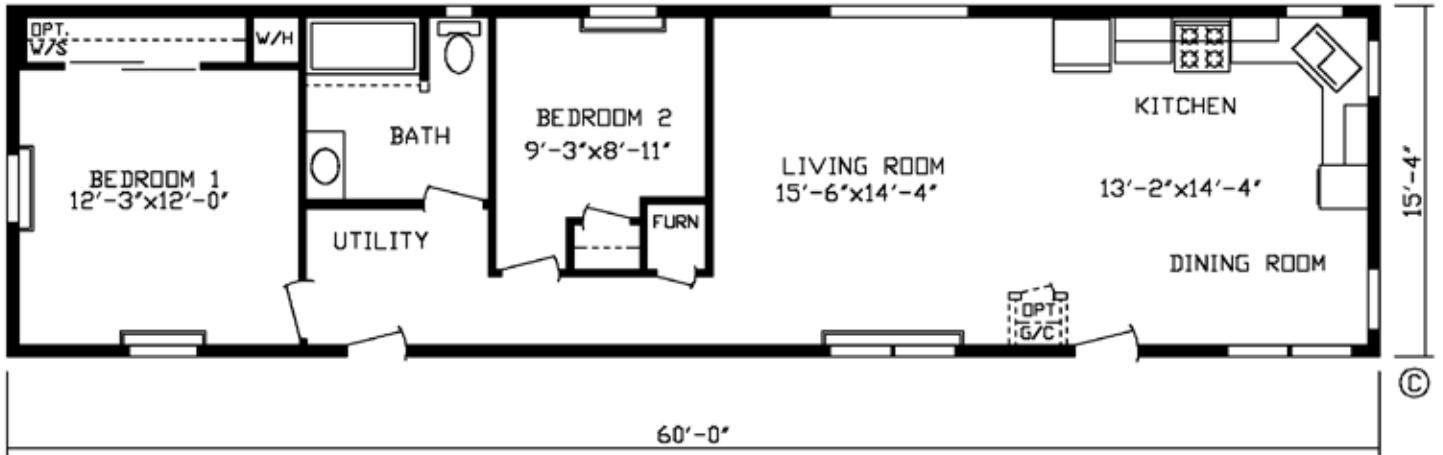
2 Bedroom

1 Bath



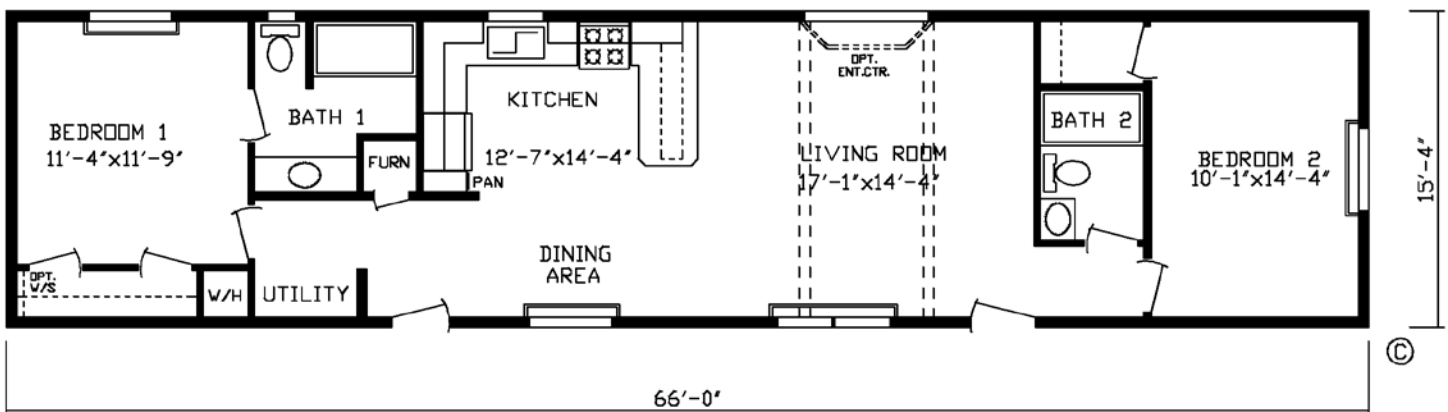
Model #184515
64' x 16' • 920 sq. ft.

2 Bedroom
1 Bath



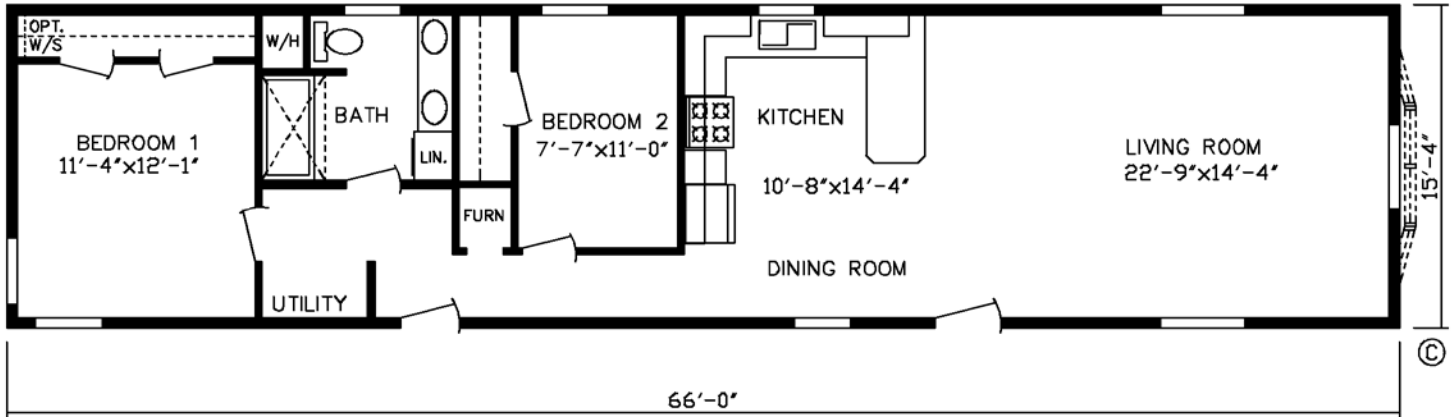
Model #184507
70' x 16' • 1012 sq. ft.

2 Bedroom
2 Bath



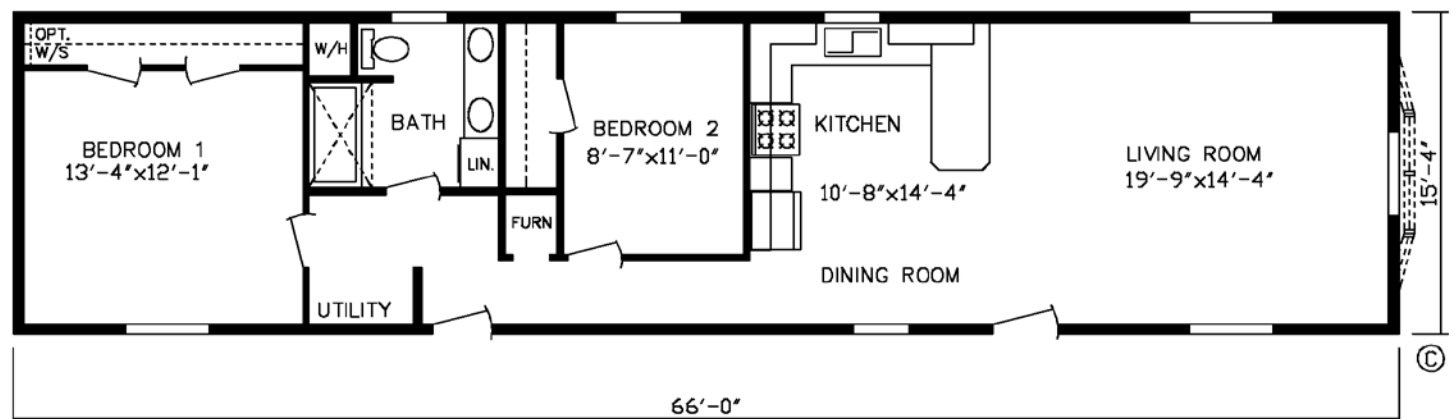
Model #184521
70' x 16' • 1012 sq. ft.

2 Bedroom
1 Bath



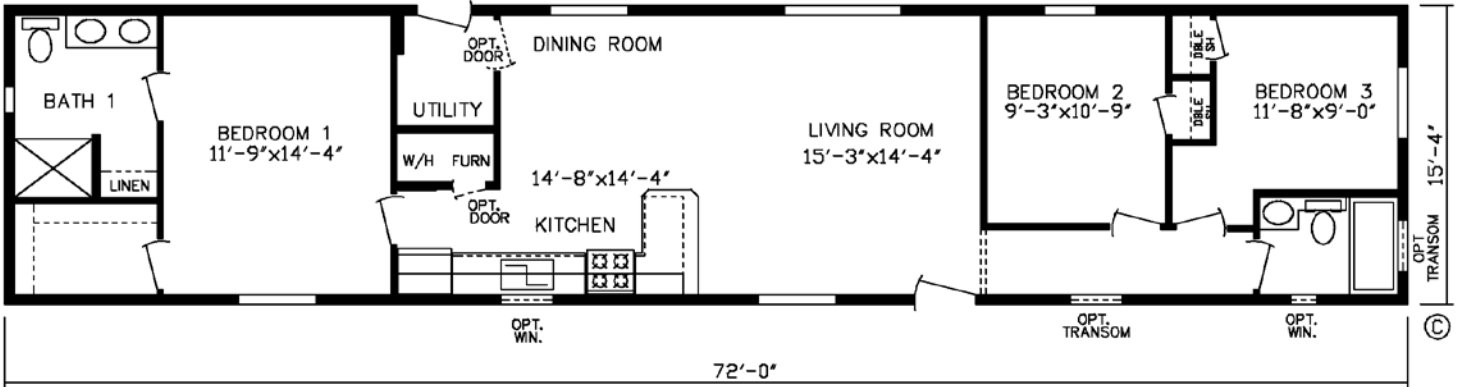
Model #184522
70' x 16' • 1012 sq. ft.

2 Bedroom
1 Bath



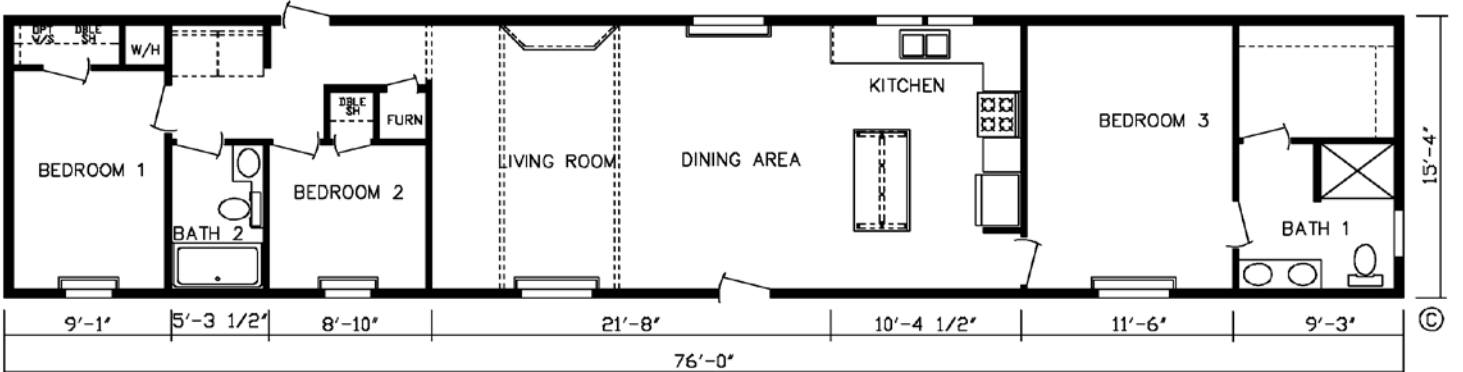
Model #184502
76' x 16' • 1104 sq. ft.

3 Bedroom
2 Bath



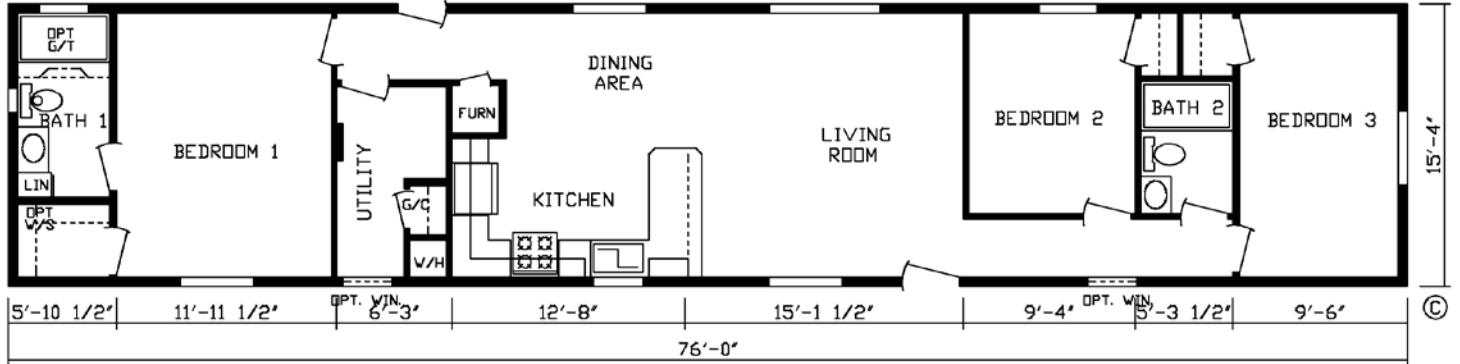
Model #184504
80' x 16' • 1165 sq. ft.

3 Bedroom
2 Bath



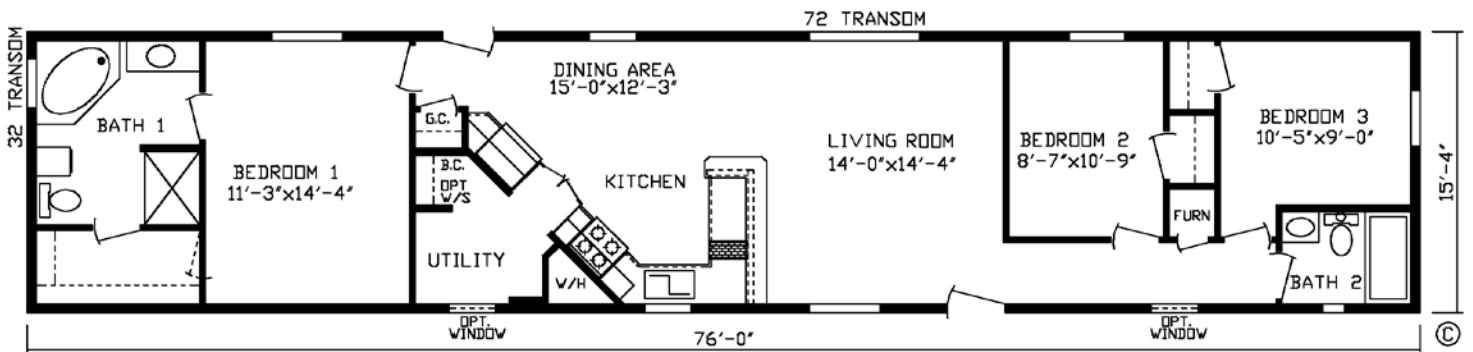
Model #184509
80' x 16' • 1165 sq. ft.

3 Bedroom
2 Bath



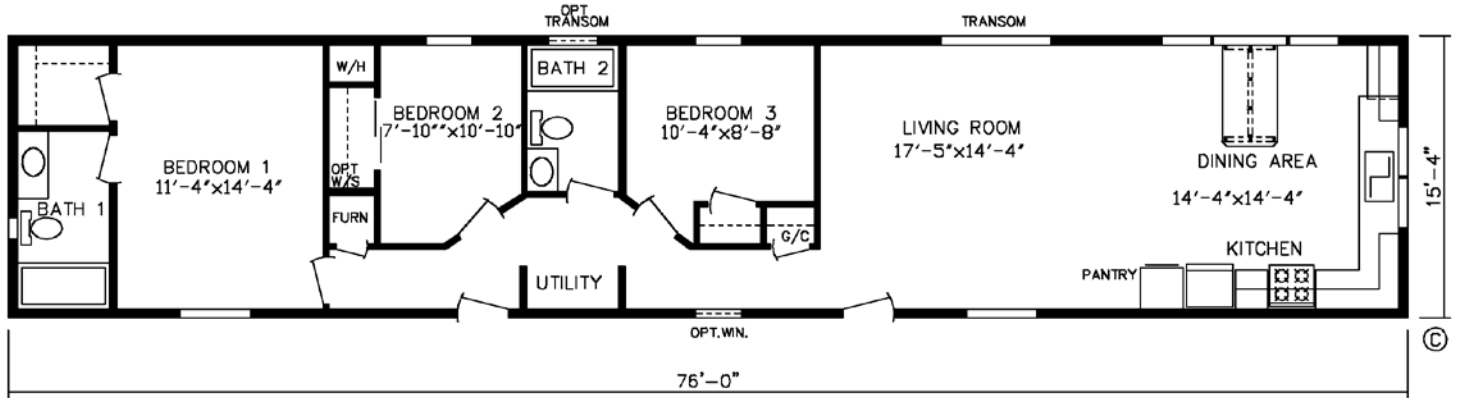
Model #184510
80' x 16' • 1165 sq. ft.

3 Bedroom
2 Bath



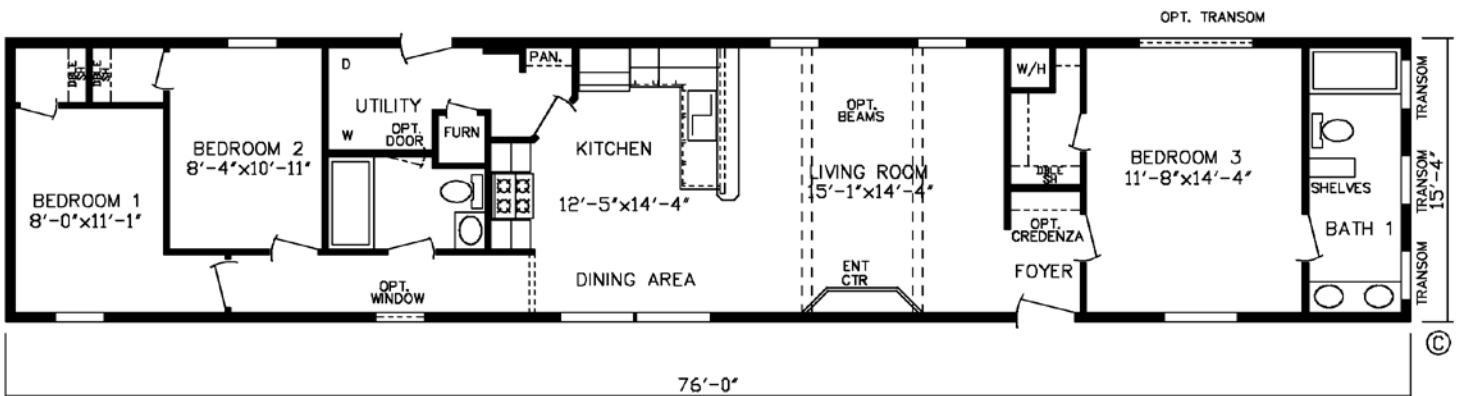
Model #184514
80' x 16' • 1165 sq. ft.

3 Bedroom
2 Bath



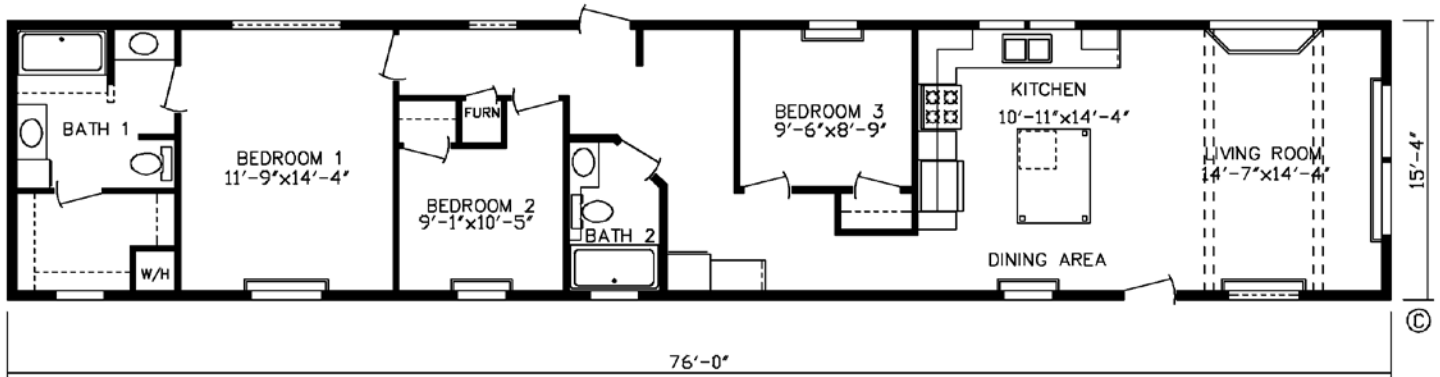
Model #184516
80' x 16' • 1165 sq. ft.

3 Bedroom
2 Bath



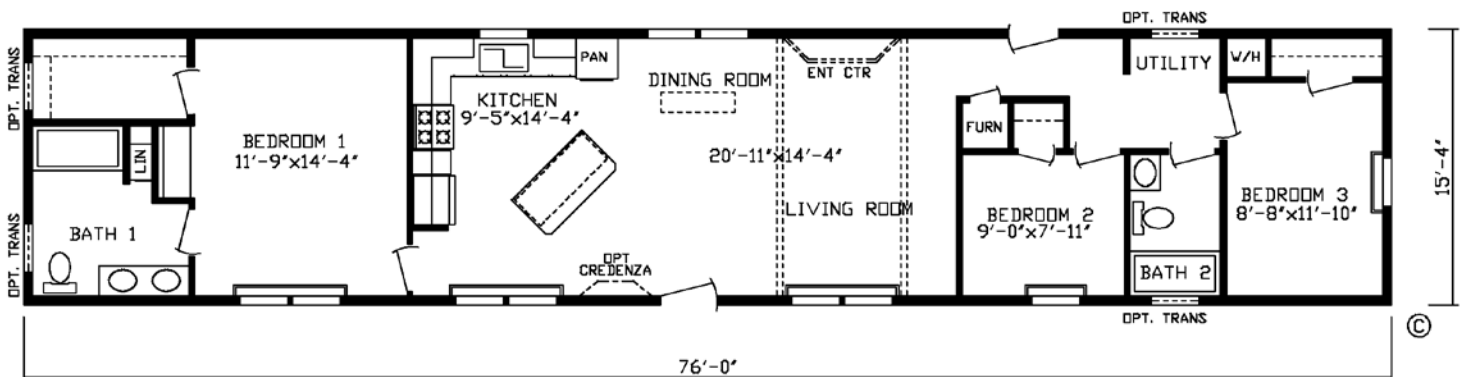
Model #184519
80' x 16' • 1165 sq. ft.

3 Bedroom
2 Bath



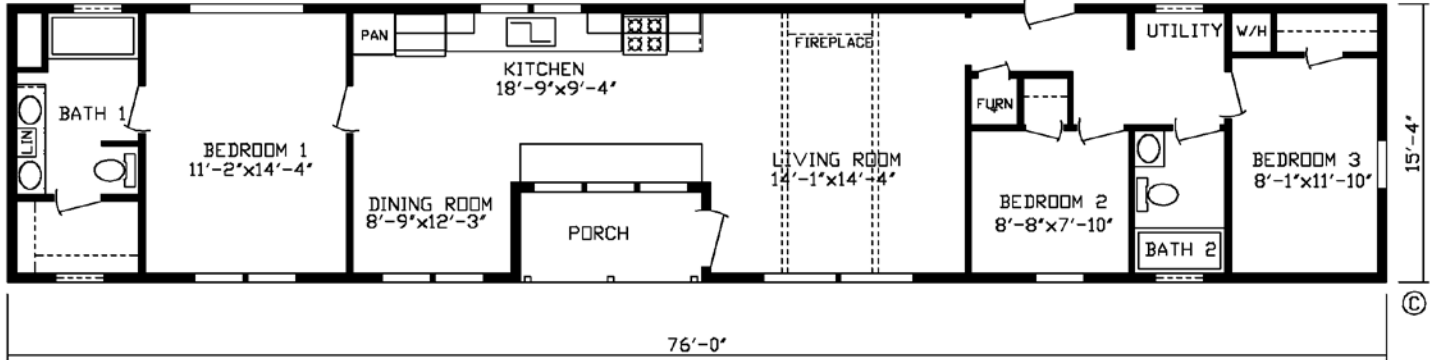
Model #184523
80' x 16' • 1165 sq. ft.

3 Bedroom
2 Bath



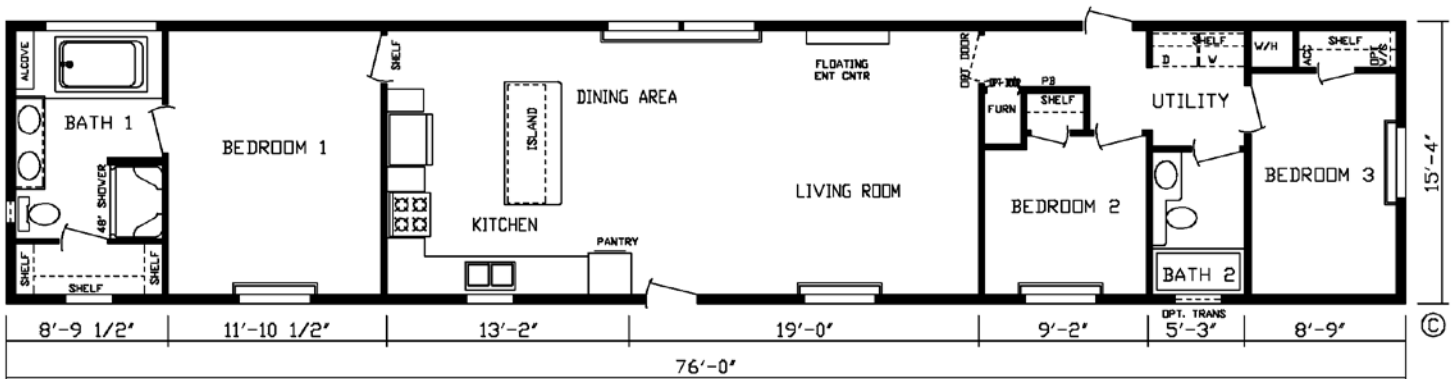
Model #184524
80' x 16' • 1165 sq. ft.

3 Bedroom
2 Bath



Model #184527
80' x 16' • 1165 sq. ft.

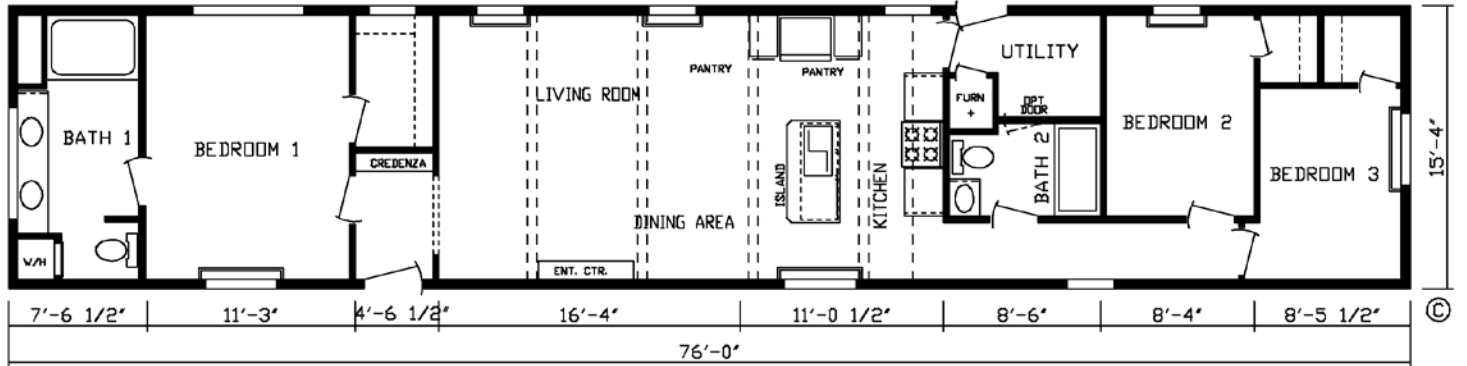
3 Bedroom
2 Bath



Model #184528

3 Bedroom
2 Bath

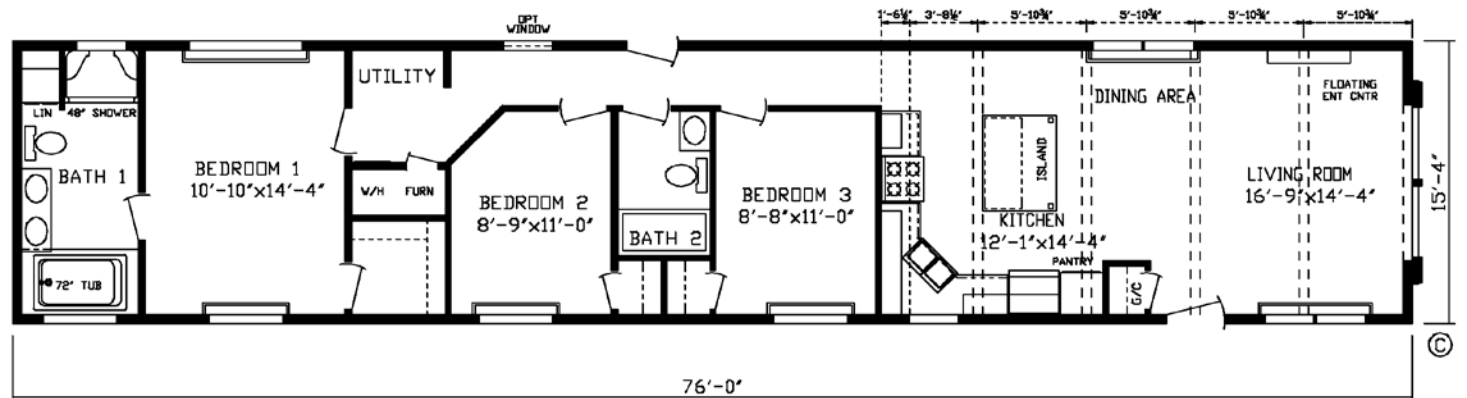
80' x 16' • 1165 sq. ft.



Model #184529

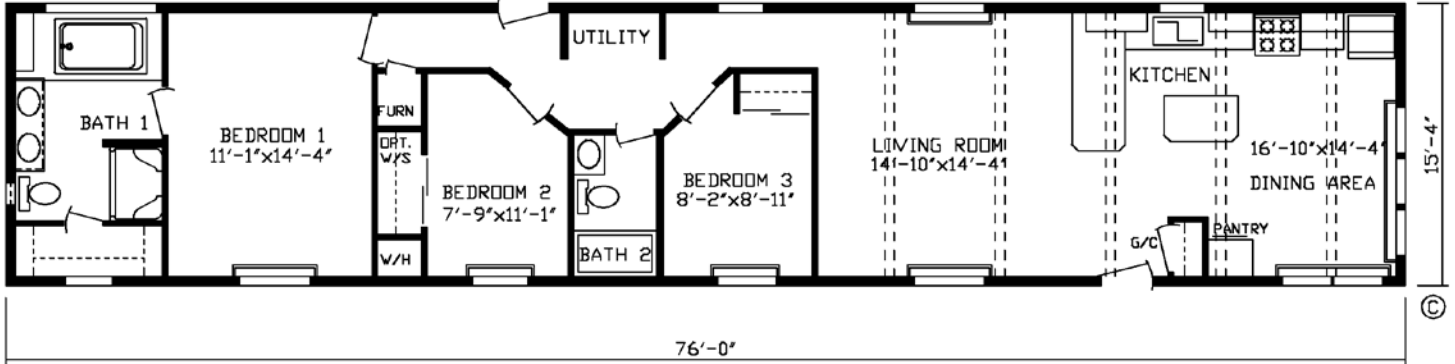
3 Bedroom
2 Bath

80' x 16' • 1165 sq. ft.



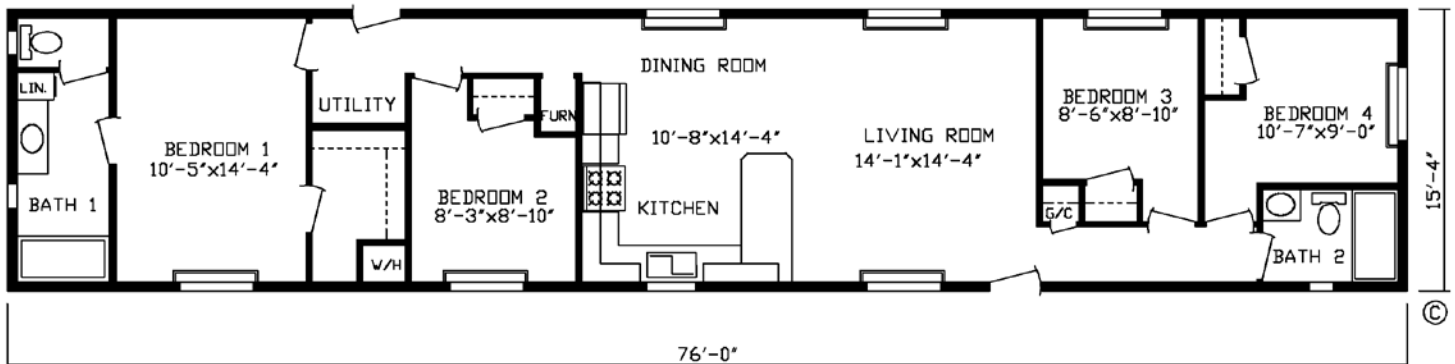
Model #184531
80' x 16' • 1165 sq. ft.

3 Bedroom
2 Bath



Model #184520
80' x 16' • 1165 sq. ft.

4 Bedroom
2 Bath



Inspiration Single Standards

General:

8' Flat Sidewall Height
24" O.C. Rafters
2x8 Floor Joist (16' ONLY)
Tongue & Groove OSB Floor Decking
30# Roof Load
3/12 Roof Pitch

Furnace:

Perimeter Heating System
Gas Furnace w/Electric Ignition
Positive Operating System
Insulated Heat Ducts
Furnace Roof Jack Extension

Carpet:

Shaw 15 oz. Carpet Throughout

5lb Carpet Pad

Beauflor Roll Goods



Electric:

100 Amp Service
LED Can Lights
Wire & Vent For Dryer
Exterior Recept on Sidewall
Light At Front & Rear Doors
Smoke Alarms

Plumbing:

Plumb for Washer
Water Inlet Shut-Off Valve
30 Gallon Dual Element Electric Water Heater
Decorative Water Heater Access
High-Arc Kitchen Faucet
Metal Faucets
Deep Stainless Steel Kitchen Sink

Baths:

Bath Exhaust Fans
36" High Bath Lavs
Fiberglass Tubs
Porcelain Bath Lavs
Framed Bath Mirrors
Furniture Style Bath Lavs (Most Models)

Insulation:

R-11 Insulation in Floor
2 x 6 Sidewalls with R-19 Insulation
R-25 Insulation in Ceiling

Cabinetry:

Hardwood Cabinet Doors
Concealed Hinges on Cabinets
Self-Edge Countertop Edge
Laminate Backsplash
Seamless Countertops
Double Shelf Over Refrigerator
Shelf in Washer/Dryer Area
42" Cabinets in Kitchen
Panel Backs of Cabinets
Entertainment Center (Per Print)

Décor:

Textured Ceiling
Venetian Blinds Thru-Out
Cornice Boards on Windows
1/2" Decorator Vinyl Over Gypsum
Wire Shelving

Exterior:

Royal Vinyl Siding w/Sheathing
Metal Starter Strip w/Vinyl Siding
Shutters on Front & Door Side
Energy Seal Windbreaker
Owens Corning Oakridge Architectural Shingles
Vinyl Accent @ Front Door (Per Print)
Wainscote Accent on Hitch End (Per Print)



Doors:

White Interior 6-Panel Doors
3 Hinges on Interior Doors
Full Door Stop Molding
Brushed Nickel Door Knobs
34 x 82 9 Lite Rear Door w/Storm
38 x 82 Decorator Front Door w/Storm
Deadbolt Lock At Exterior Doors
Keyed Alike Locksets

Windows:

Kinro Low E Vinyl 60" Windows



Appliances:

18 CF 2-Door Refrigerator
30" Gas Range w/Electric Ignition
Linear Stainless Steel Range Hood



* Friendship Homes prides itself in continuous improvement to ensure the highest quality. Products, standards and specifications are subject to change without notice



A Family of Housing Companies, Housing America's Families.

815 Budd Road, Montevideo, MN 56265

www.friendshiphomesmn.com



Visit our website for more photos of our homes.

There are many options to choose from for selecting countertops, cabinets, walls, flooring and fixtures to personalize your new home.





Friendship
HOMES



www.friendshiphomesmn.com