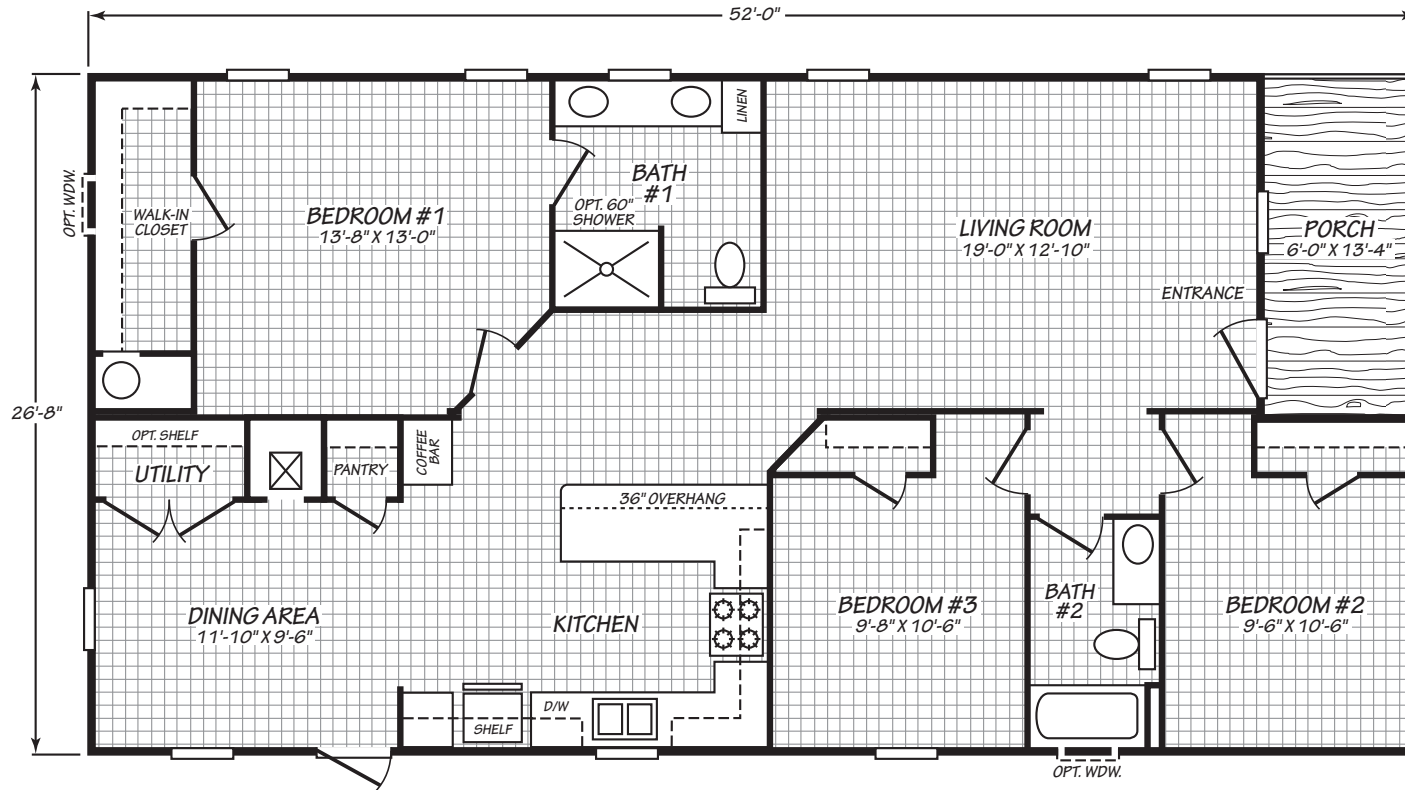




LANDMARK

28523U

3 bedroom • 2 bathroom • 1,386 sqft



©2026 CAVCO INDUSTRIES INC. ALL RIGHTS RESERVED. All images are for illustrative purposes only and may include non-standard options. Standard features are subject to change. Contact the retailer or builder for current measurements and features.



Where *exceptional* meets *affordable*.™

LM/240/16OCT25 APPROVAL_10/13/25

cavcowaco.com