



THE WAVERLY CREST PRESTIGE

★ ★ ★

2023





More than 1.5 million families
call Fleetwood home.



HOMES ON THE HILL ▶
Built by Fleetwood Homes

This two-bedroom 1,035-sq-ft home, sat on the lawn of the National Mall during the Homes On the Hill event, hosted by the U.S. Department of Housing and Urban Development, June of 2022. The event showcased the value of manufactured homes.



STANDARD features



EXTERIOR

- LP Smart Panel exterior siding
- Extended window lintel trim above FDS windows/door
- 4" trim on remaining windows
- Dormer(s), size and location dependent on size of home with fascia mounted starburst per plan
- 6" eaves around home on 28' wide
- 10" eaves around home on 30' wide
- Ship loose exterior bottom trim
- Foundation ready

INTERIOR / FINISH WALLS

- Basic mix carpet – 20 oz. (shipped loose)
- 7/16" – 7# carpet pad (shipped loose)
- Vinyl flooring in wet areas per plan, included 2 1/4" baseboard in wet areas, per plan
- Tape and texture walls throughout with rounded corners
- Closets and pantries are painted drywall and molding
- Textured ceilings (orange peel)
- Barn wood ceiling accent in dining room
- Barn wood entertainment shelf and columns per plan
- Wire closet and pantry shelves
- White window trim and window sills – not T&T
- Entry lino

DOORS & WINDOWS

- 36" in swing front door with deadbolt
- 36" in swing rear door with deadbolt
- Vinyl clad thermo-pane windows with Low-E
- 2-panel white interior doors with lever handles
- Residential style mortise door hinges (3)

- 2 1/4" door trim with 1" flat back of closet doors
- Floor mount door stops
- 12" wood valances L/R, F/R, D/R, KIT and All Bed

KITCHEN

- 18 cu. ft. stainless steel Whirlpool frost-free refrigerator
- 30" stainless steel Whirlpool freestanding electric range, with clock, window and timer
- Stainless steel Whirlpool dishwasher
- Plumb for ice maker
- 7" double cell stainless steel sink
- Single lever faucet with sprayer
- Bank of drawers with 1 small drawer and 2 large drawers
- Laminate backsplash

MASTER BATH

- Tub and shower standards are model specific
- China sink with single lever faucets
- Single lever tub/shower diverter
- Elongated commode
- Exhaust fan
- Framed bathroom mirrors
- 36" height lavy cabinet
- LED can light above sink(s)
- Towel bar and tissue holder
- Laminate backsplash

GUEST BATH

- 60" 1 pc. fiberglass tub/shower
- China sink with single lever faucets
- Single lever tub/shower diverter

- Elongated commode
- Exhaust fan
- Framed bathroom mirror
- 36" height lavy cabinet
- Towel bar and tissue holder
- Laminate backsplash

CABINETS

- Hardwood cabinet doors and face frames
- Cab doors and drawers with cabinet knobs
- 42" overhead kitchen cabinets with full cabinet doors
- Crown molding on kitchen cabinets
- Decorative range hood canopy with fan above range
- Shelf above washer/dryer
- Double shelves or transom with shelf above the refrigerator (per plan)
- Lined overhead cabinets with 2 adjustable shelves
- Wood ply drawer sides with metal drawer guides
- Premium built-in cabinet features per plan

ELECTRIC & PLUMBING

- 200 amp all electric service (gas optional)
- Drain line – water heater installed
- Master water shut-off valve
- Shut-off valves T/O (to order)
- 30 gallon electric water heater
- Electric furnace
- LED can lights T/O (to order)
- Wire and brace for ceiling fan living room/family room
- GFI patio plug near rear door
- Black upgrade porch light front door
- White porch light back door

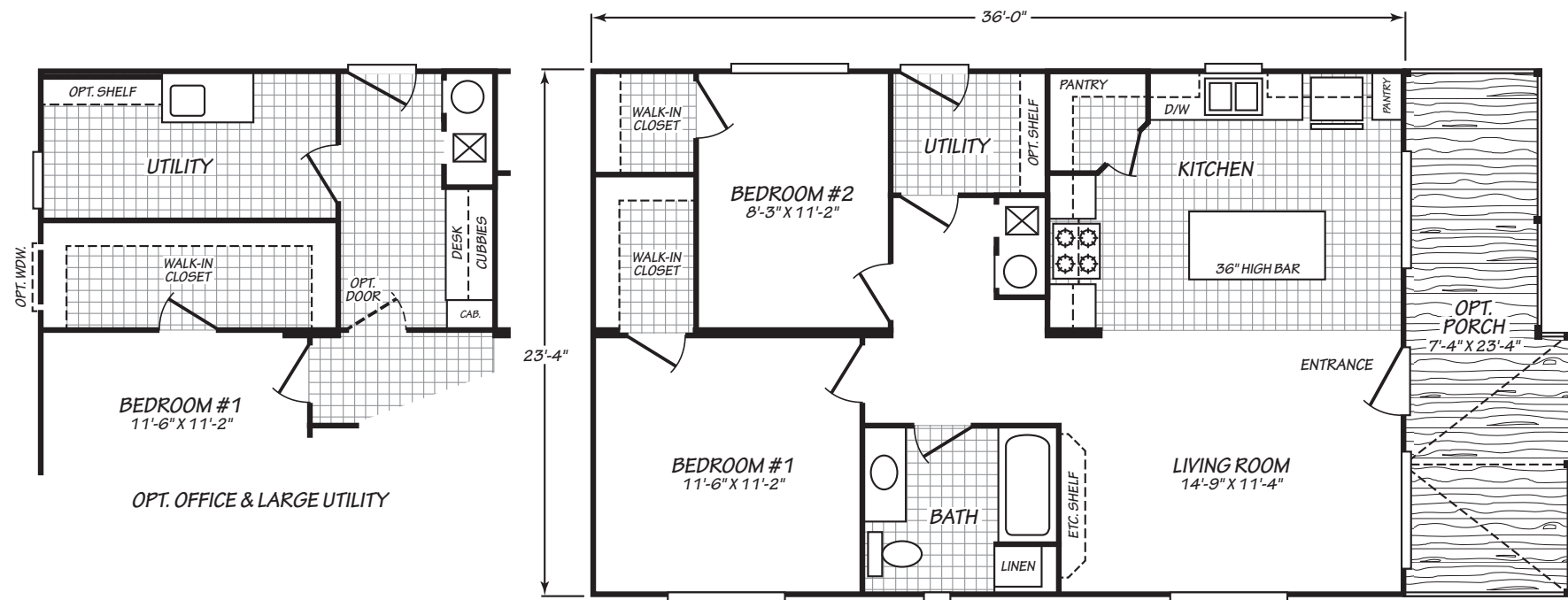
STRUCTURAL

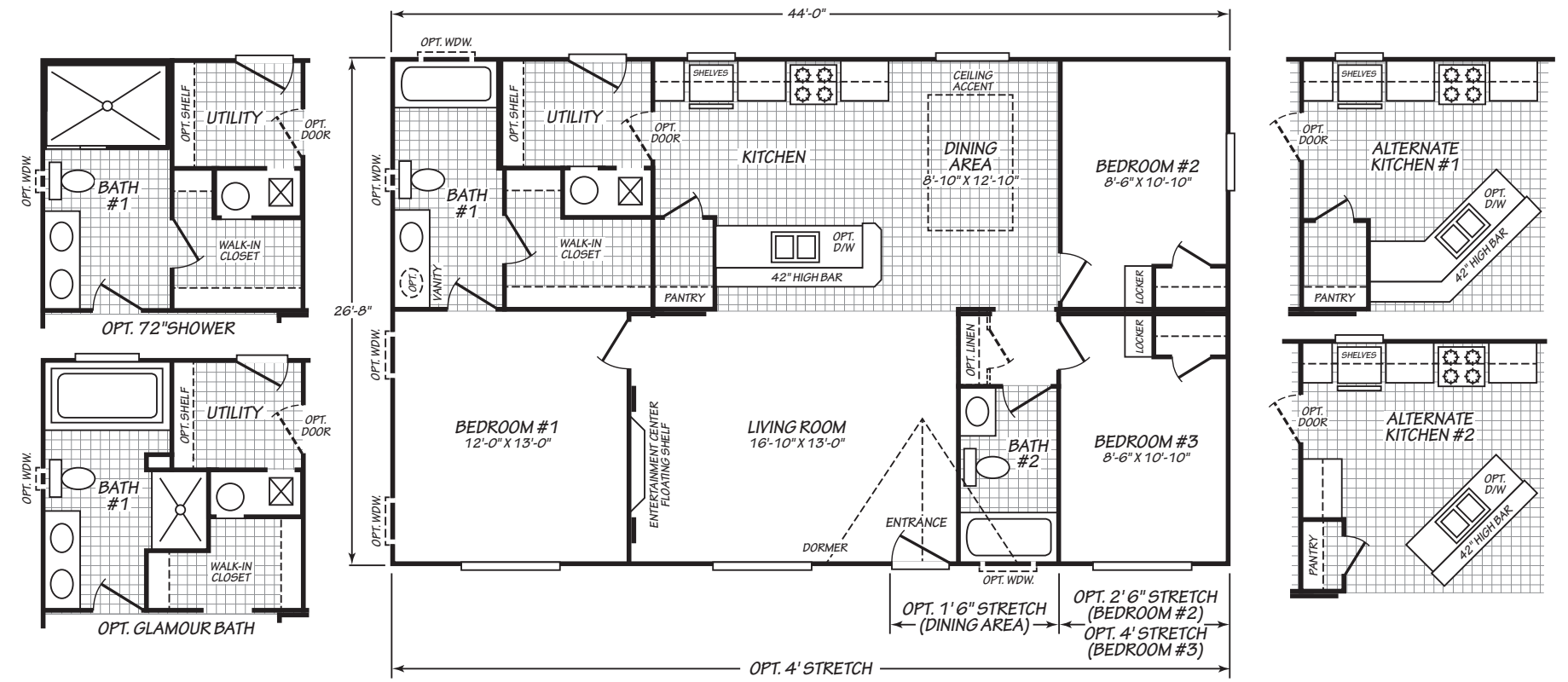
- 1 year structural warranty (see Homeowner's Guide for complete details)
- 30 lb. roof load
- 8'-6" flat ceilings
- 2" x 6" exterior walls 16" O.C
- 1 9/32" T&G OSB floor decking
- 2" x 6" – 16" O.C floor joist (2" x 8" on 30' wide)
- 2" x 8" – 16" O.C floor joist (16' wide only)
- 3:12 roof pitch
- Class A fire rated limited lifetime architectural shingles
- Removable hitches
- Zone III Thermal Specifications: R-21 roof, R-21 walls, R-11 floor

Den, Family Room (F/R), Activity Room (A/R), and Bonus Room (B/R) are all similar spaces and any standard feature for a series that mentions one also applies to all. Specifications Subject to Change Without Notice or Obligation



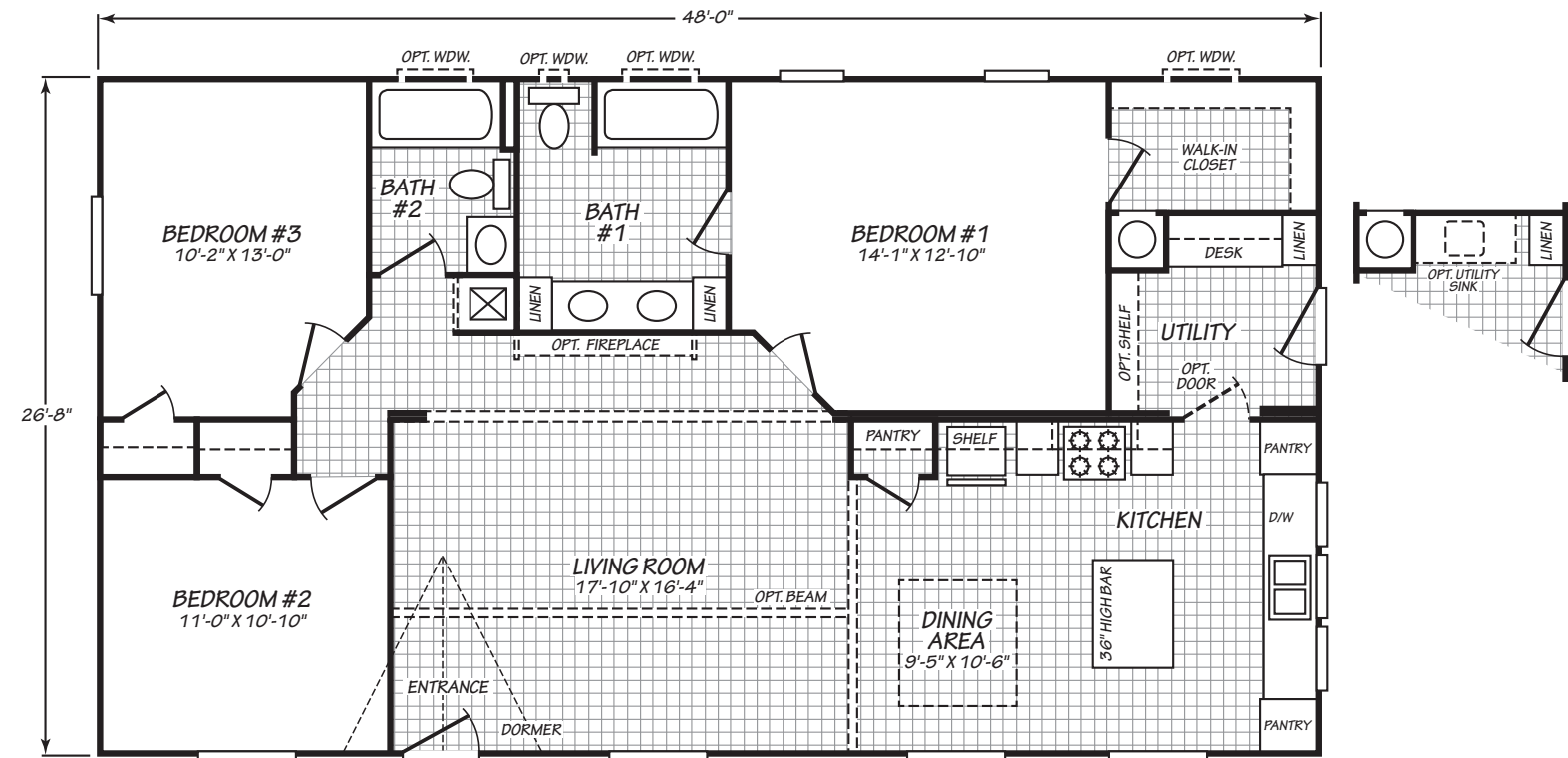
PRESTIGE SERIES
Fleetwood Homes





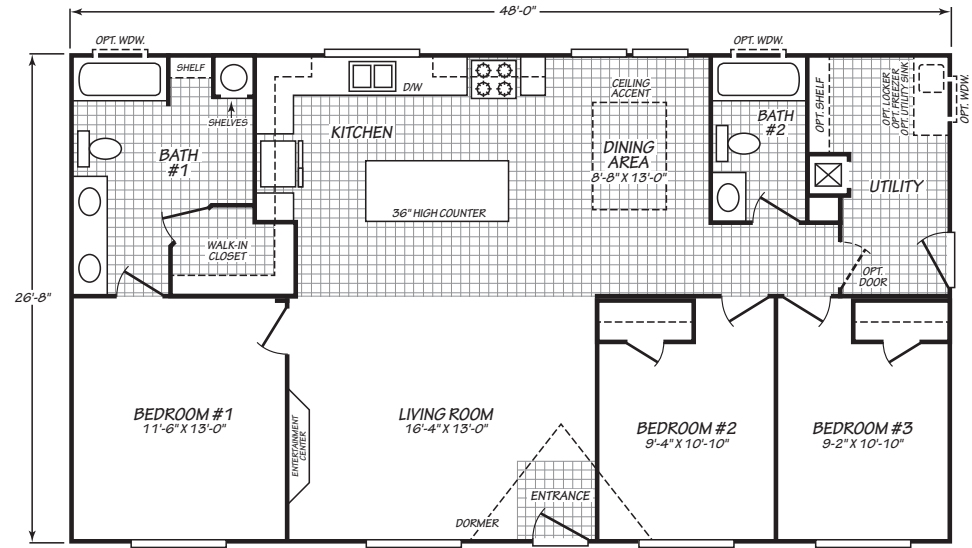
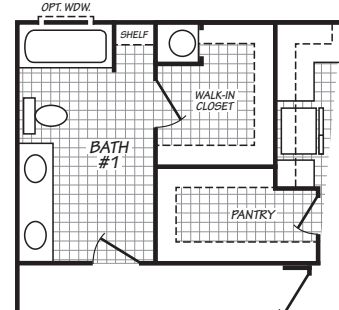
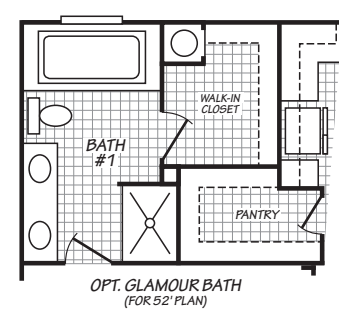
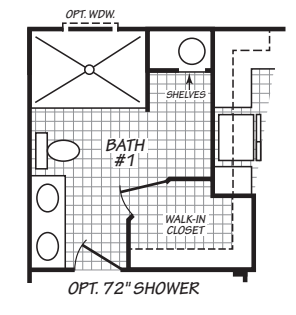
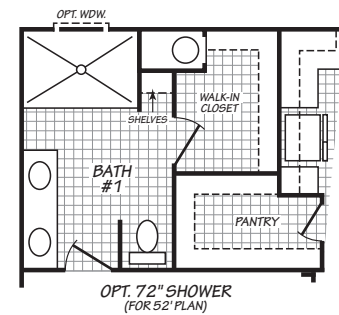
PRESTIGE SERIES
THE HAYDEN

THE HAYDEN | MODEL 28443E · 3 Bedroom · 2 Bath · 1,173 SQFT



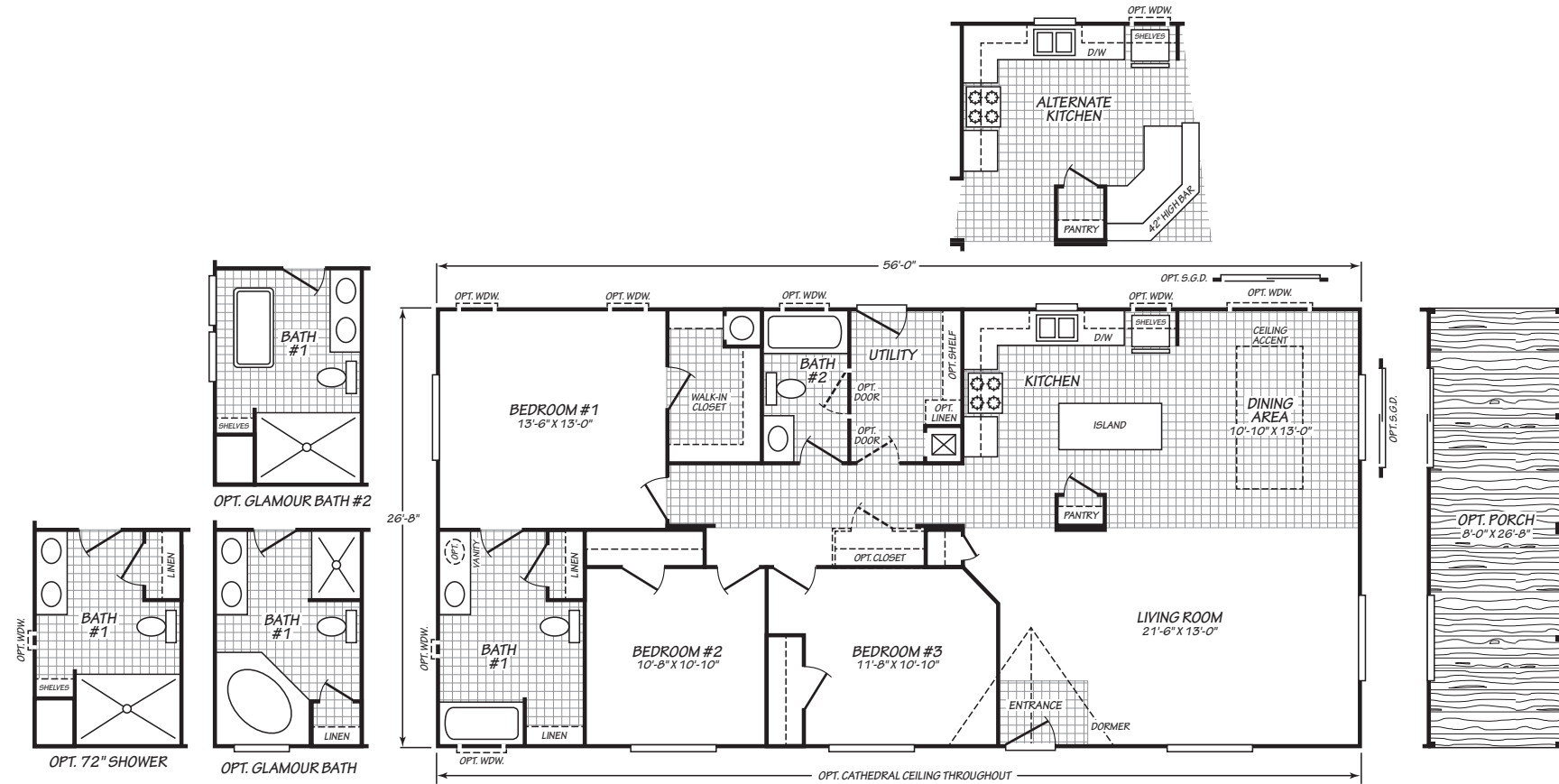

 fleetwoodnampa.com





PRESTIGE SERIES
THE JUMP CREEK

THE JUMP CREEK | MODEL 28483N · 3 Bedroom · 2 Bath · 1,280 SQFT



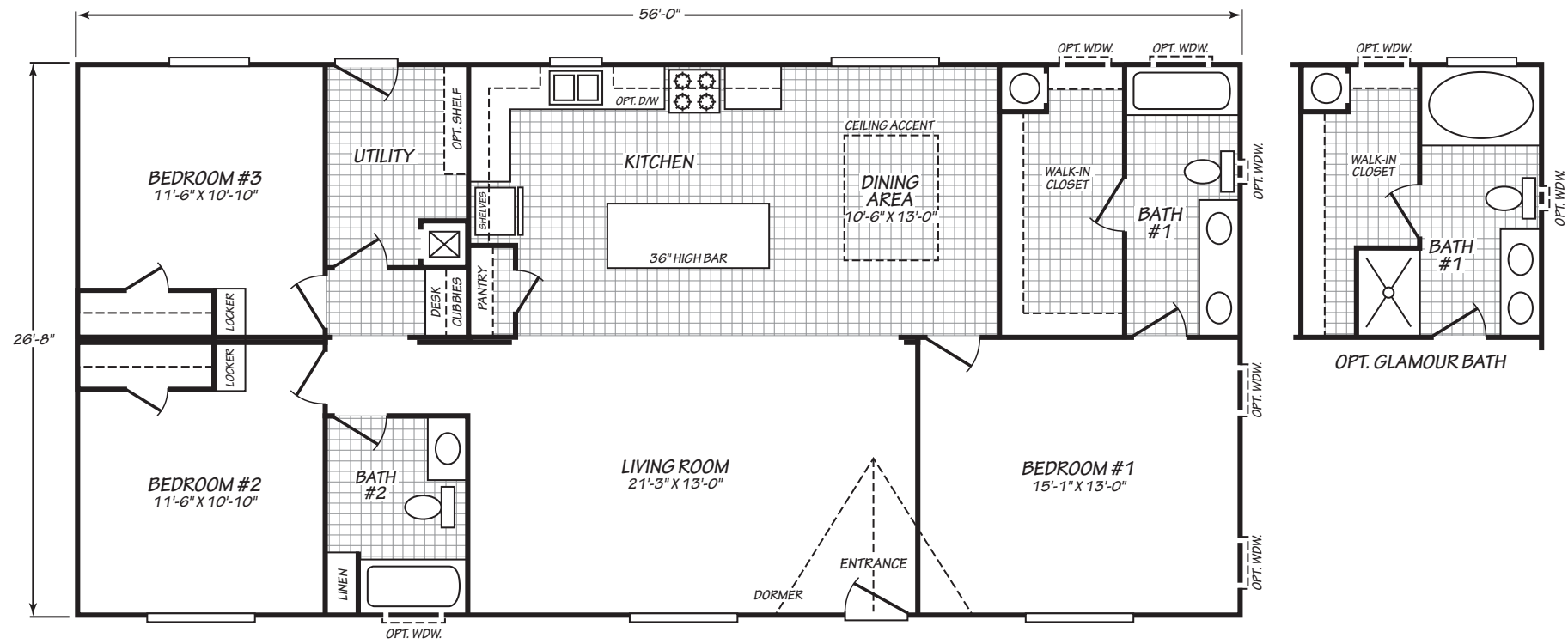


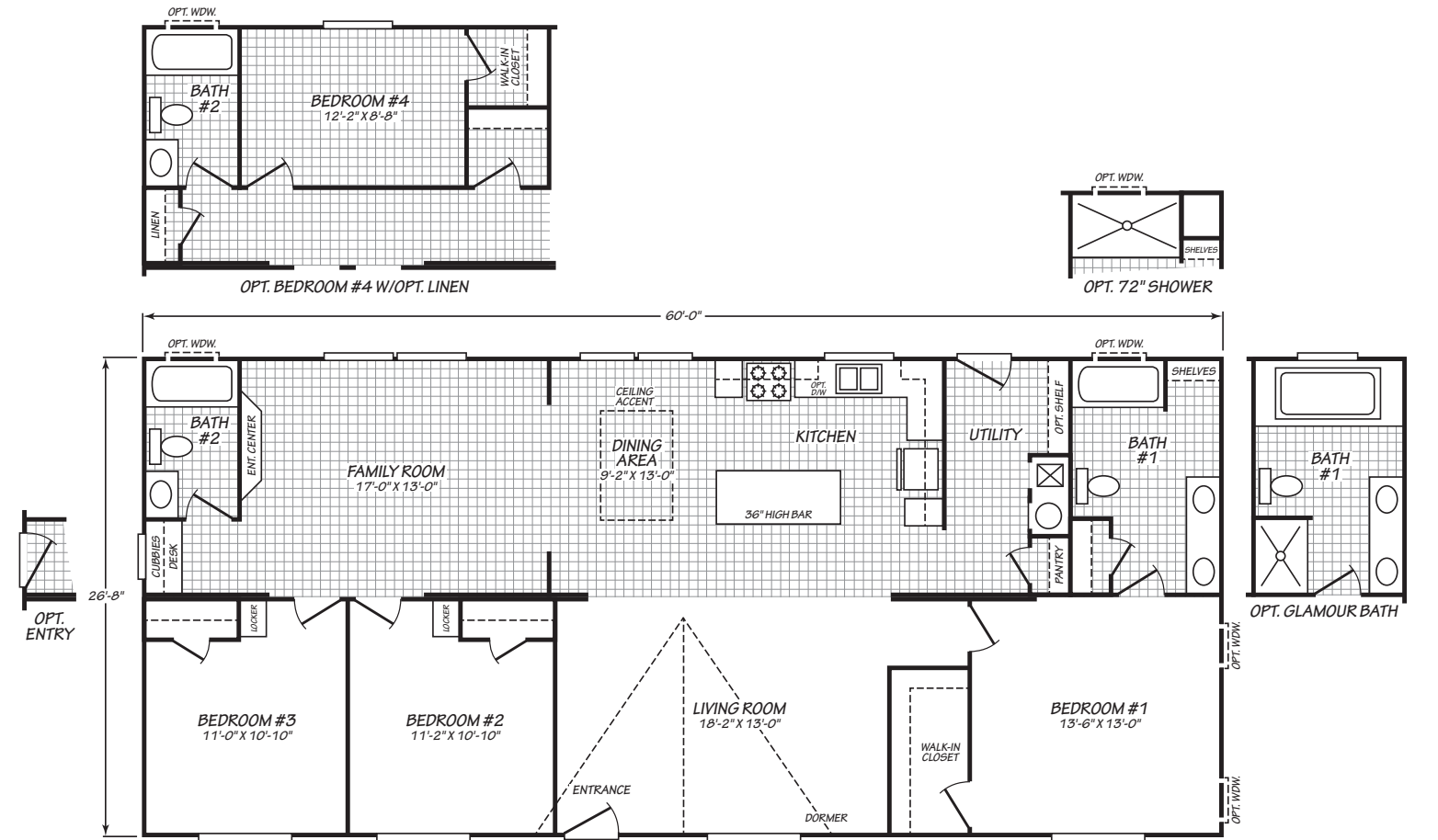


 fleetwoodnampa.com

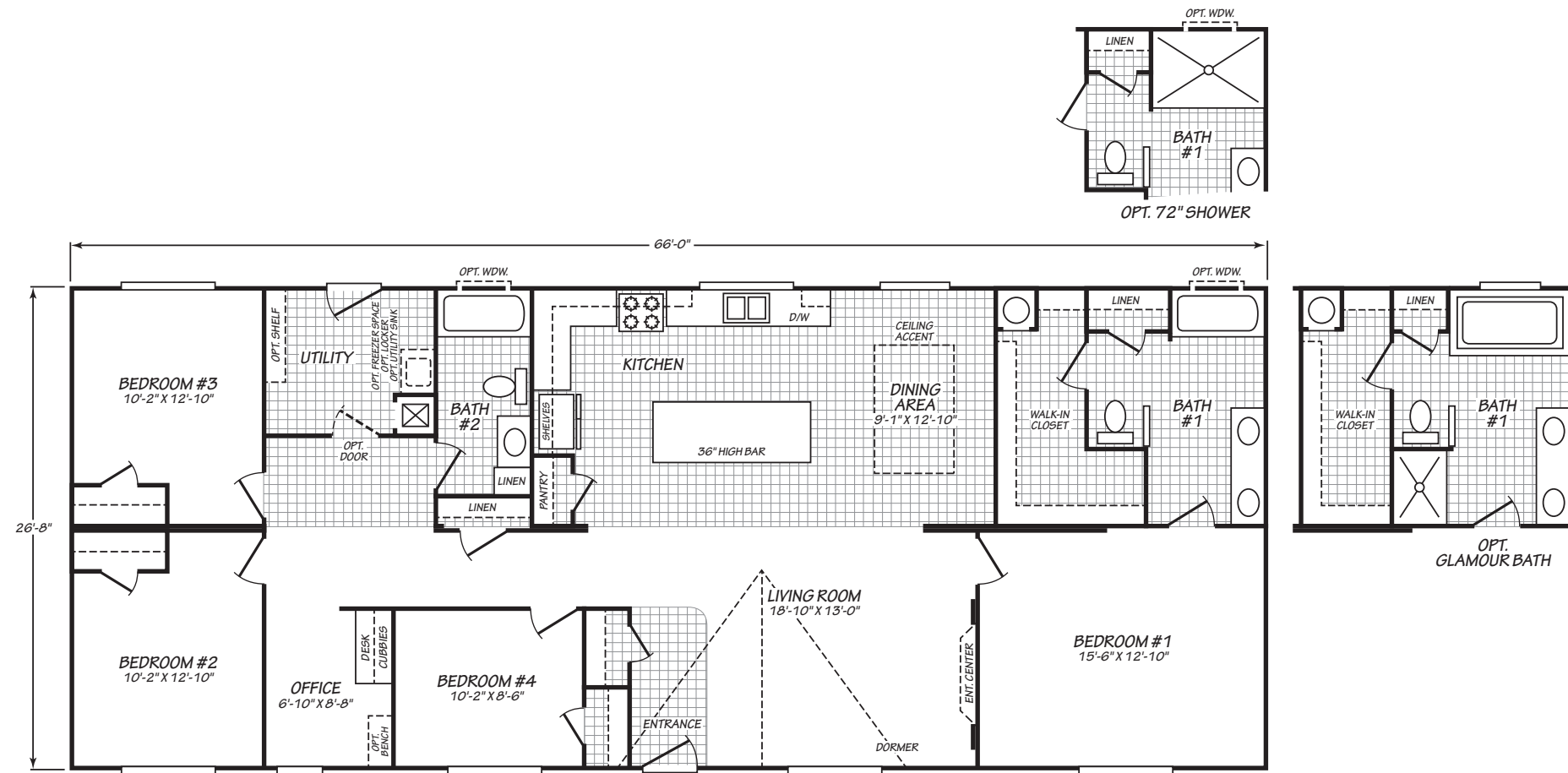
PRESTIGE SERIES
 THE HAUSER

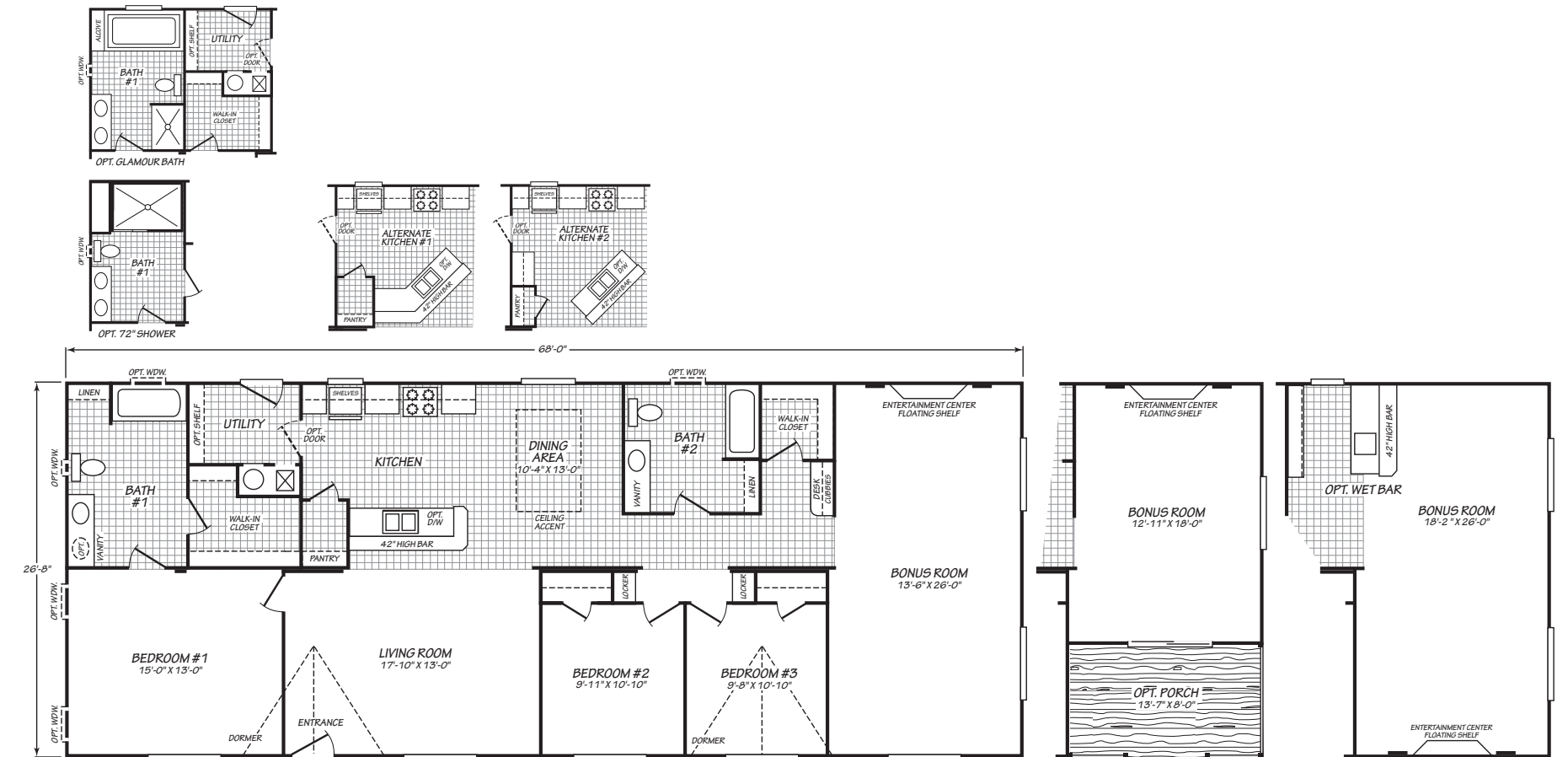
THE HAUSER | MODEL 28563E · 3 Bedroom · 2 Bath · 1,493 SQFT






 fleetwoodnampa.com

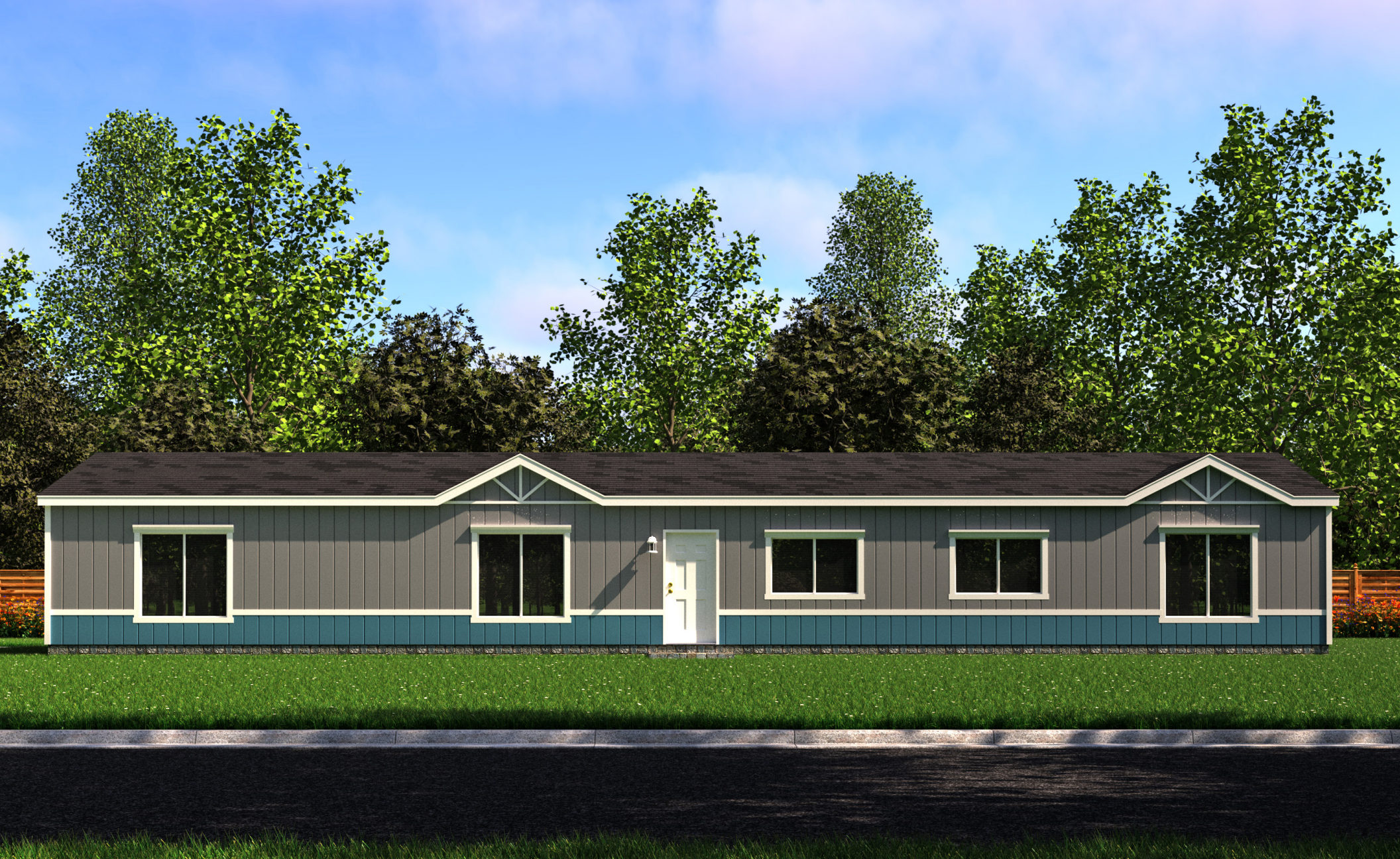




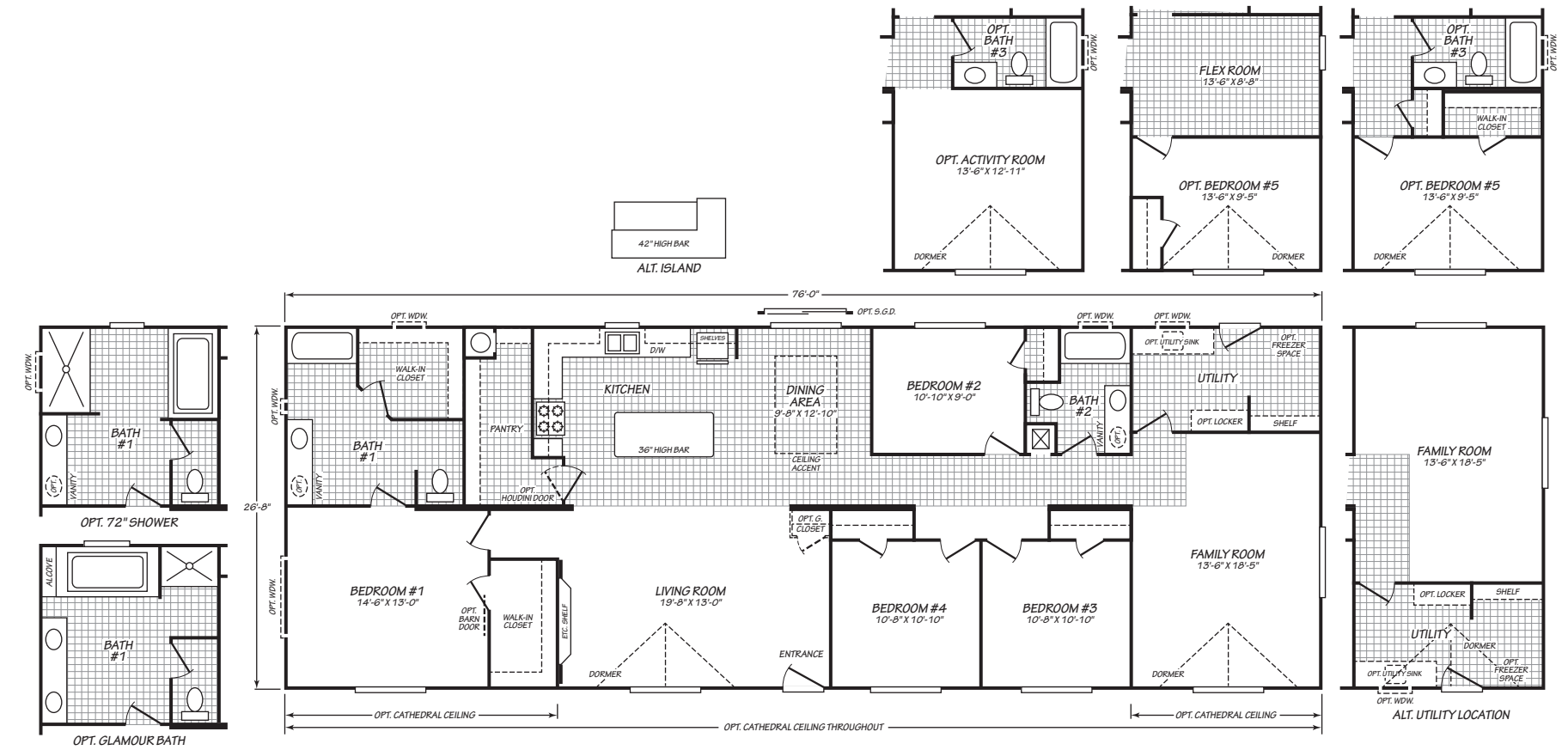
PRESTIGE SERIES
THE GLACIER

THE GLACIER | MODEL 28683E · 3 Bedroom · 2 Bath · 1,813 SQFT

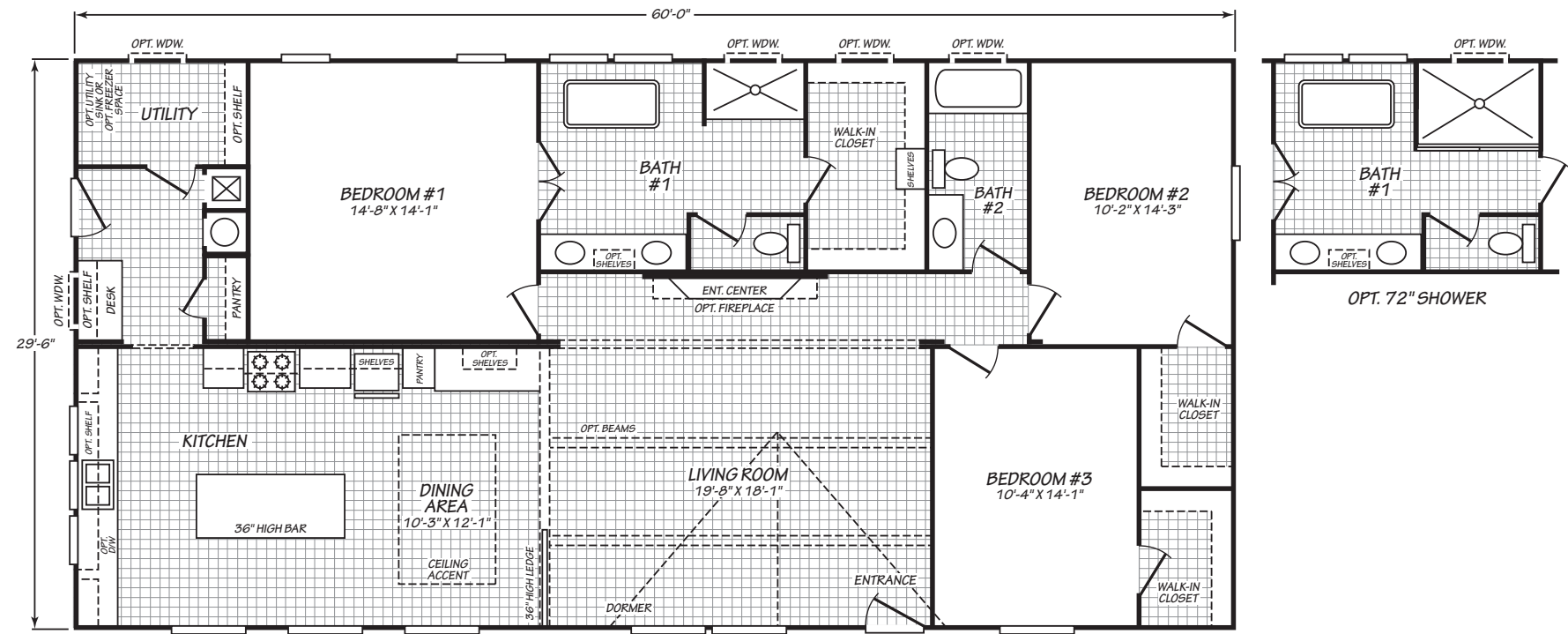


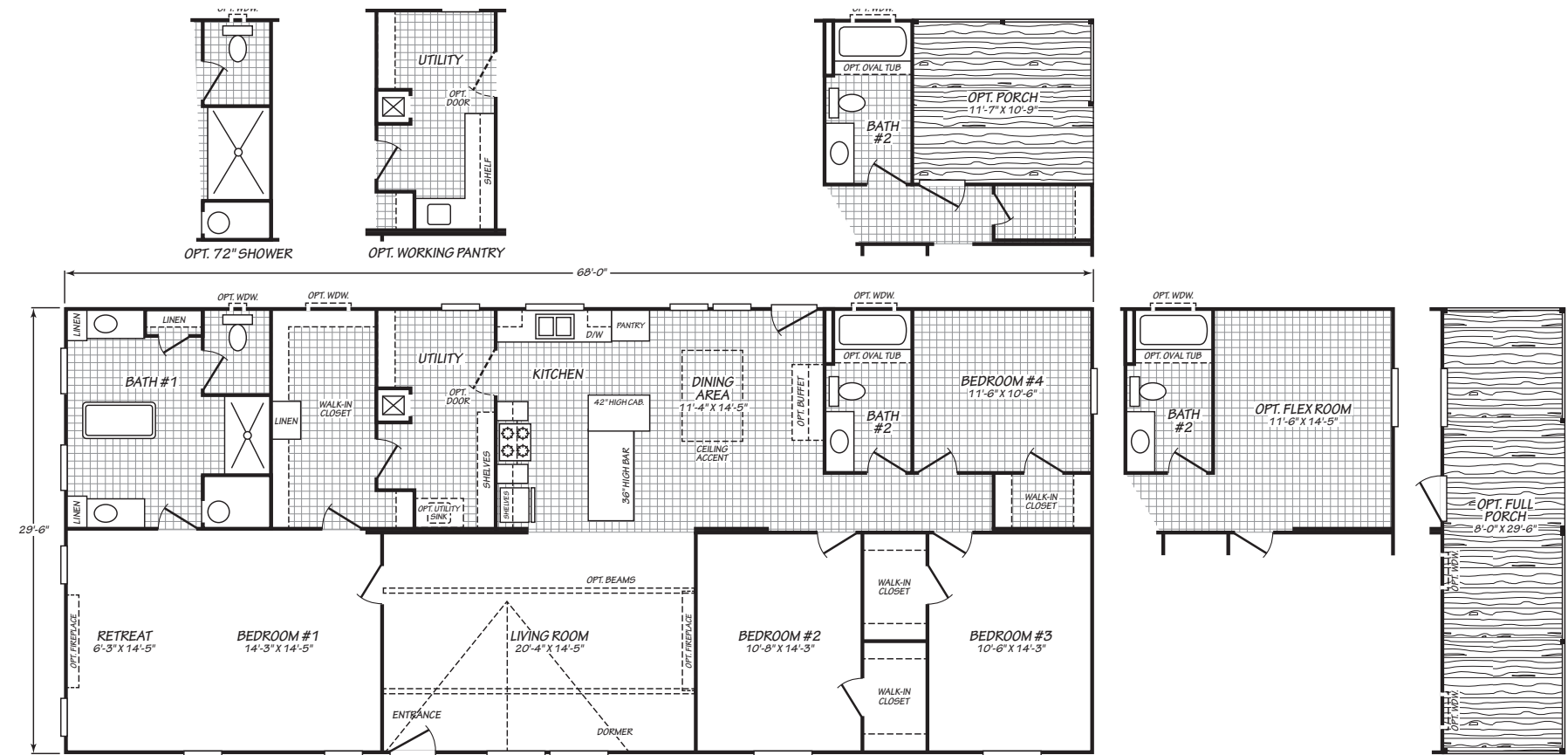


PRESTIGE SERIES
THE STANLEY



THE STANLEY | MODEL 28764N · 4 Bedroom · 2 Bath · 2,026 SQFT



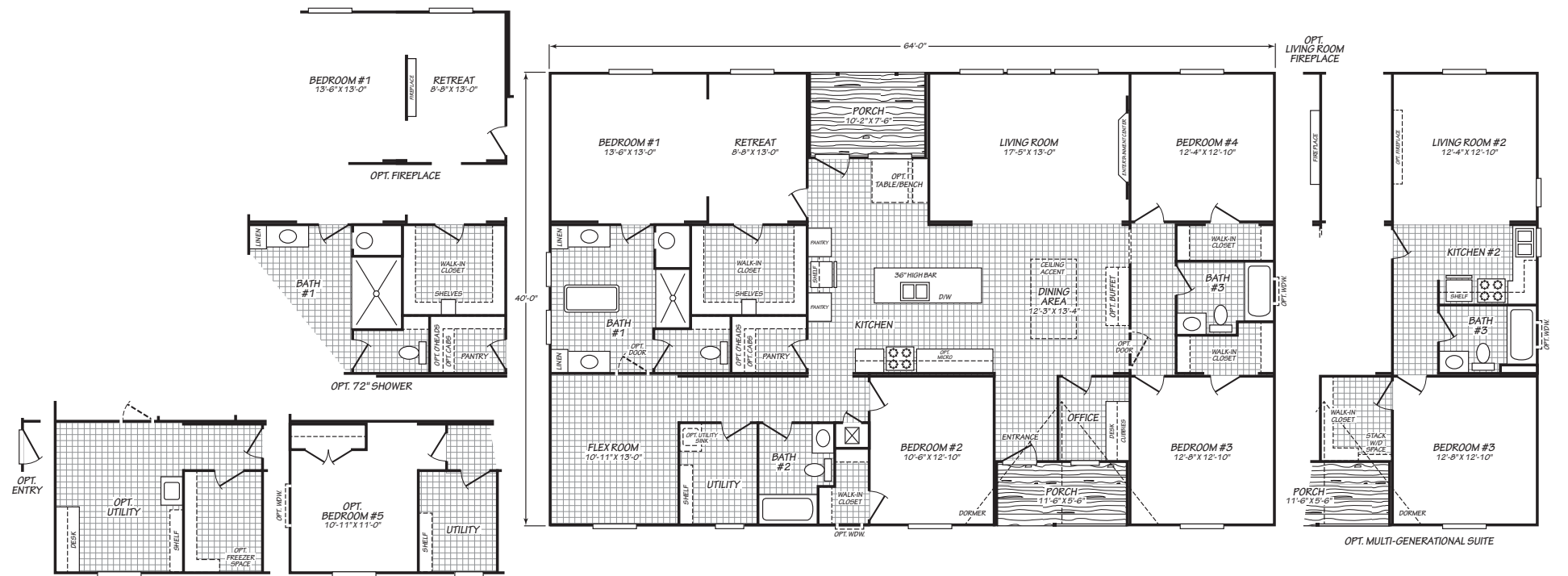



 fleetwoodnampa.com

PRESTIGE SERIES
THE SHOSHONE

THE SHOSHONE | MODEL 30684E · 4 Bedroom · 2 Bath · 2,006 SQFT





 fleetwoodnampa.com



A Home for Your *Life*

Home is where the heart is...where you feel safe and secure. It begins from the moment you first step into your new home.

Simply put: quality products plus outstanding customer service equals satisfied homeowners. Your home...built in a timely manner with superior quality at a fair price.



We build homes for life.

Today, Fleetwood is one of the nation's largest homebuilders. But it's not our size that wins customers; it's our commitment to offering quality homes that fit almost any lifestyle, personal taste and budget.





Built For Life.

fleetwoodnampa.com



A **CAVCO** COMPANY