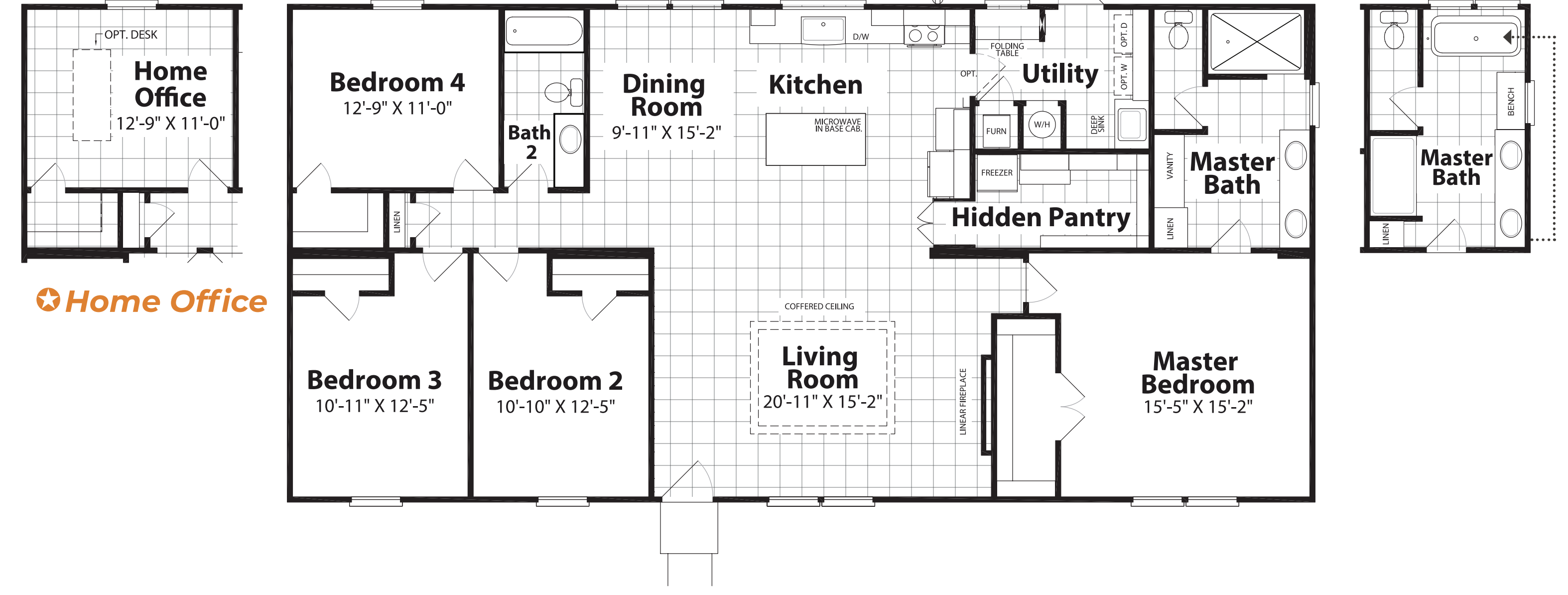
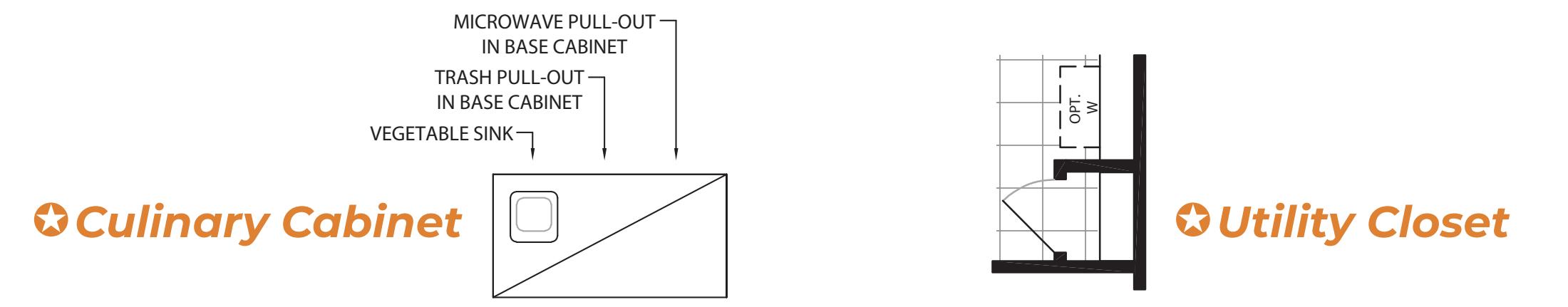




# AUSTIN FLOOR PLAN

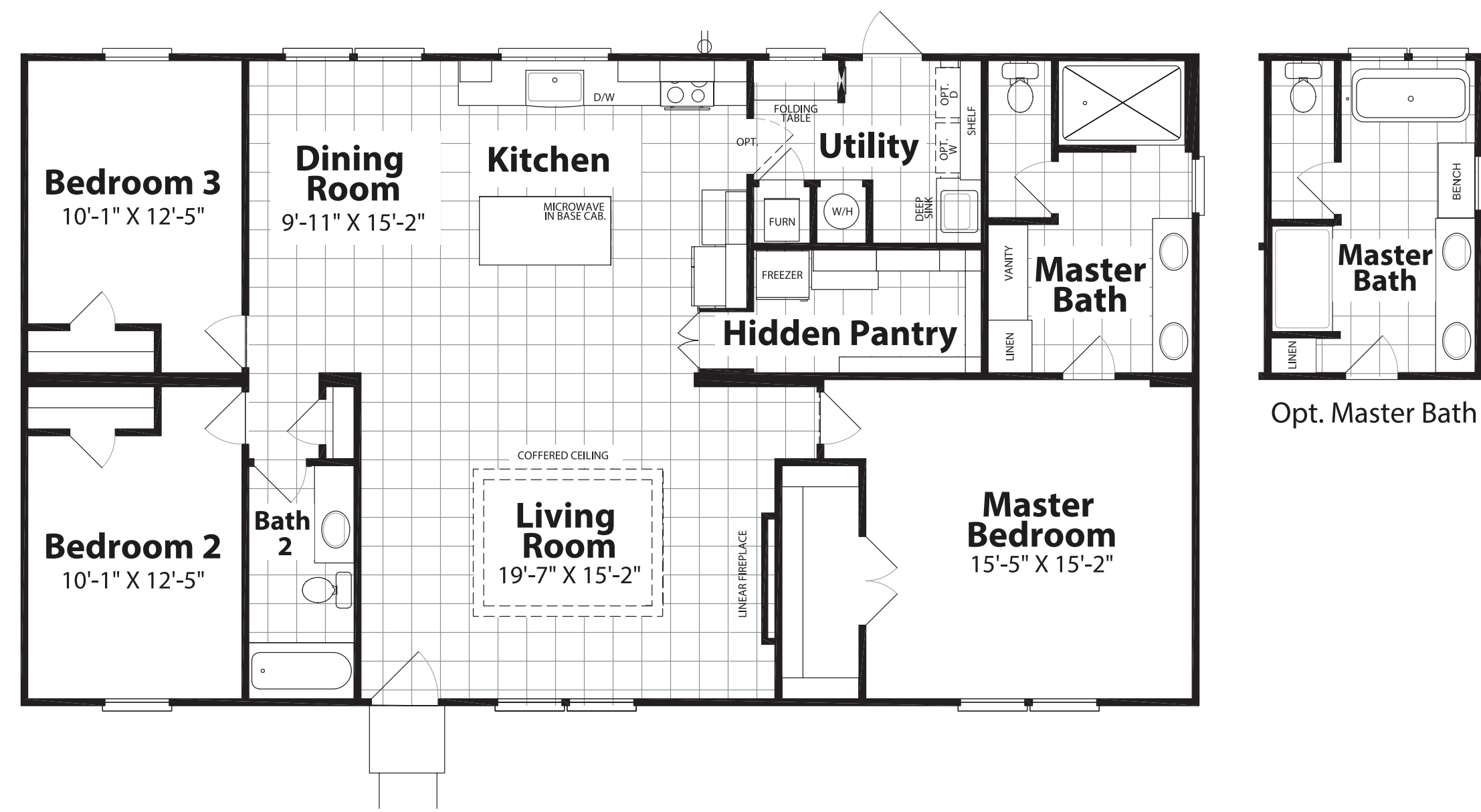
## EL RANCHO SERIES

Discover El Rancho  
By Palm Harbor



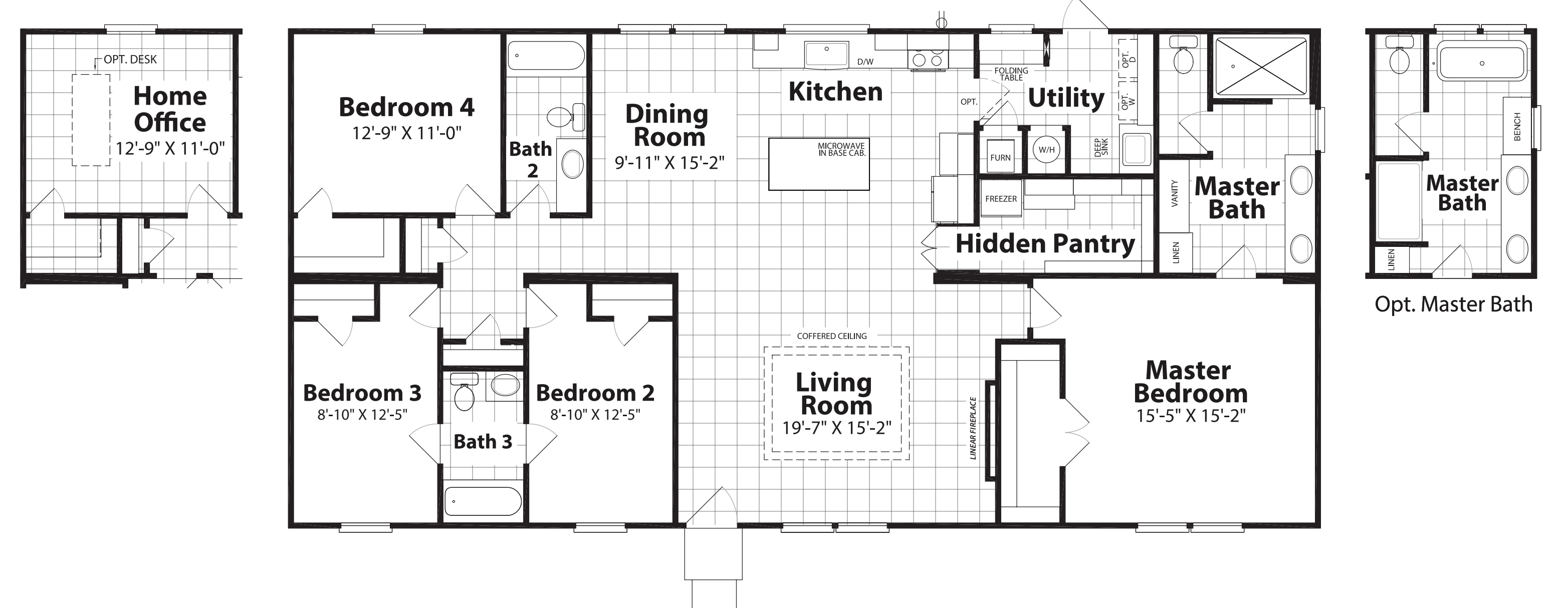
OPTIONAL FEATURES INCLUDE:  
Culinary Cabinet | Utility Closet | Master Bath | Home Office

**EL RANCHO I** 320ER32644A | 4 Bedroom | 2 Baths | 1,984 SQFT



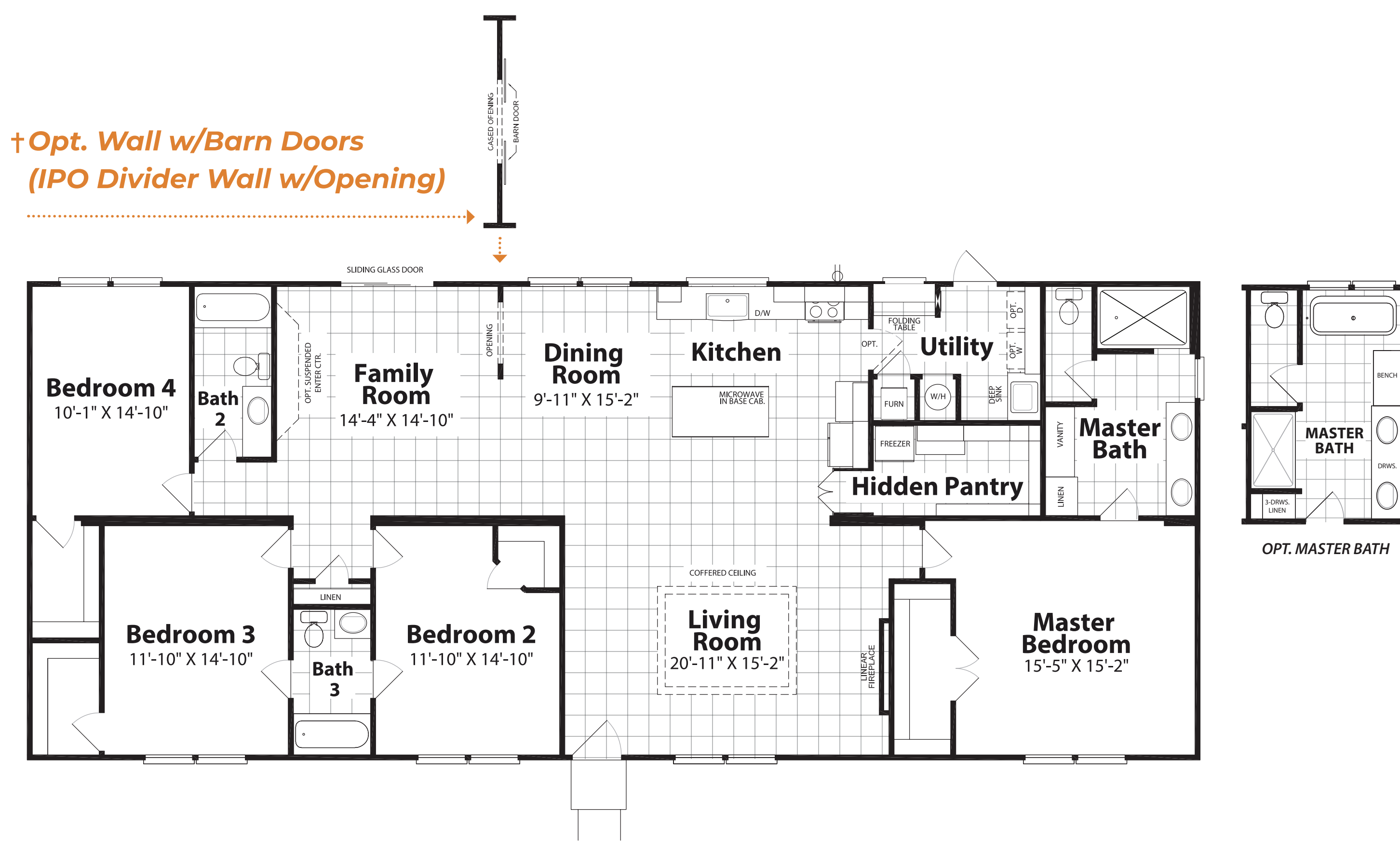
OPTIONAL FEATURES INCLUDE:  
Culinary Cabinet | Utility Closet | Master Bath

**EL RANCHO II** 320ER32563A | 3 Bedroom | 2 Baths | 1,736 SQFT



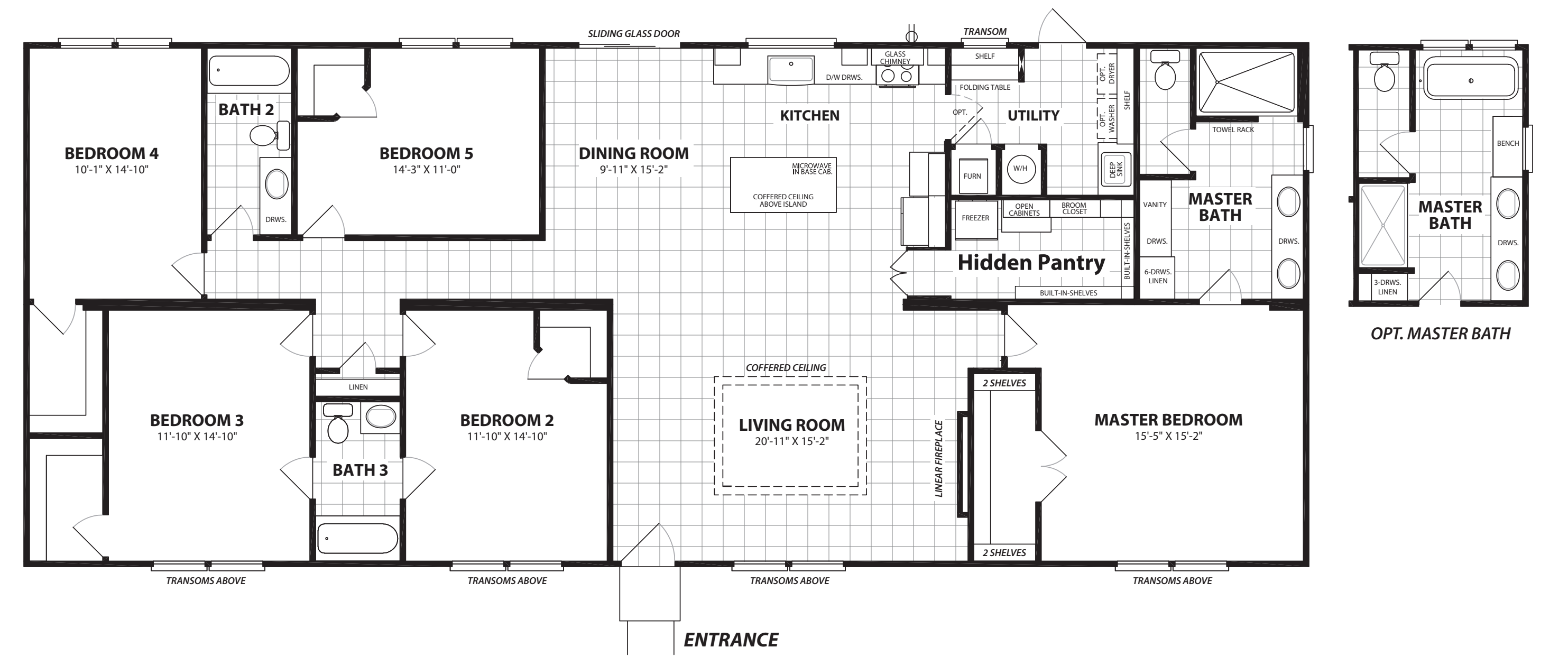
OPTIONAL FEATURES INCLUDE:  
Culinary Cabinet | Utility Closet | Master Bath | Home Office

**EL RANCHO III** 320ER32644B | 4 Bedroom | 3 Baths | 1,984 SQFT



OPTIONAL FEATURES INCLUDE:  
Culinary Cabinet | Utility Closet | Master Bath | Wall w/ Barn Doors

**EL RANCHO IV** 320ER32764A | 4 Bedroom | 3 Baths | 2,356 SQFT



OPTIONAL FEATURES INCLUDE:  
Culinary Cabinet | Utility Closet | Master Bath

**EL RANCHO V** 320ER32765A | 5 Bedroom | 3 Baths | 2,356 SQFT

### KEY STANDARD FEATURES

Coffered Ceiling - Living Room | Large Kitchen Island | Hidden Pantry - Kitchen | Coffered Ceiling - Kitchen Island | Hall Linen Closet | Walk-in Closet - Master Bedroom | 72" Open-Face Ceramic Tile Shower | Vanity in Master Bath | 6 Door Linen in Master Bath | Folding Table - Utility Room

