



MODULAR

Colony Cornerstone



Floorplan *Literature*



Table of Contents

Pg	Name	Model	Size	Sq. Ft.
3	Opal	9T28603A	2860	1586
4	Emerald	9T28643A	2864	1707
5	Emerald Photos			
6	Pearl	9T28643C	2864	1707
7	Pearl Photos			
8	Diamond	9T28643B	2864	1707
9	Ruby	9T28683A	2868	1813
10	Sapphire	9T28683B	2868	1813
11	Topaz	9T28683C	2868	1813
12	Standard Features			

Introduction

ABOUT CORNERSTONE MODULAR

Experience the perfect balance of style and value with Modular Homes featuring modern architecture, expansive kitchens, and smooth drywall interiors.

Designed for today's lifestyle, each home delivers comfort, quality, and sophistication—at an affordable price.

3



2



Opal - 9T28603A

(DEM3041P)

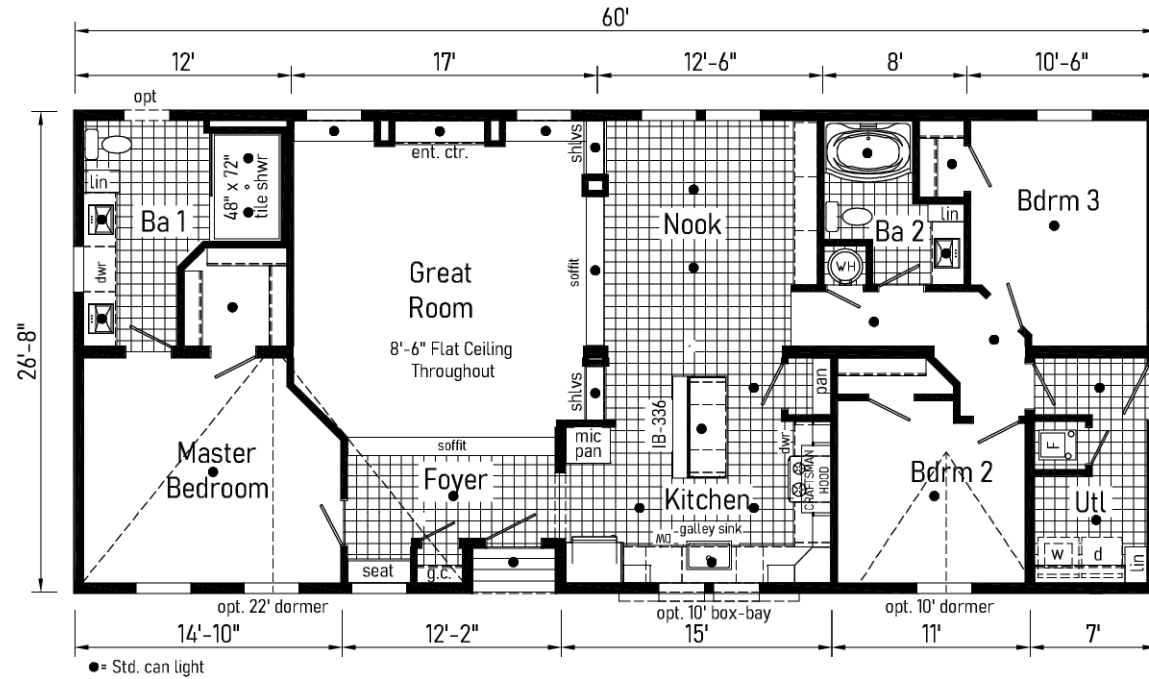
03



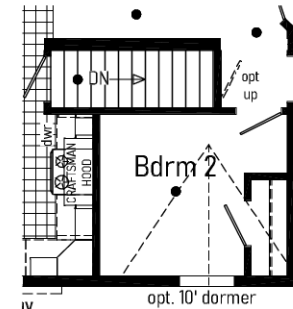
28' X 60'

APPROX. 1586 SQ. FT.

MODULAR



Optional Stairwell





Scan to Watch Video!



EMERALD PHOTOS



*Please use pictures for floorplan vision only. Decors and materials used are constantly changed and improved.

3



2



Pearl - 9T28643C

(DEM3046P)

06



28' X 64'

APPROX. 1707 SQ. FT.

MODULAR





Scan to Watch Video!

07



PEARL PHOTOS



*Please use pictures for floorplan vision only. Decors and materials used are constantly changed and improved.

3



2



Diamond - 9T28643B

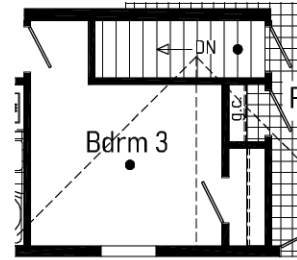
(DEM3042P)

08

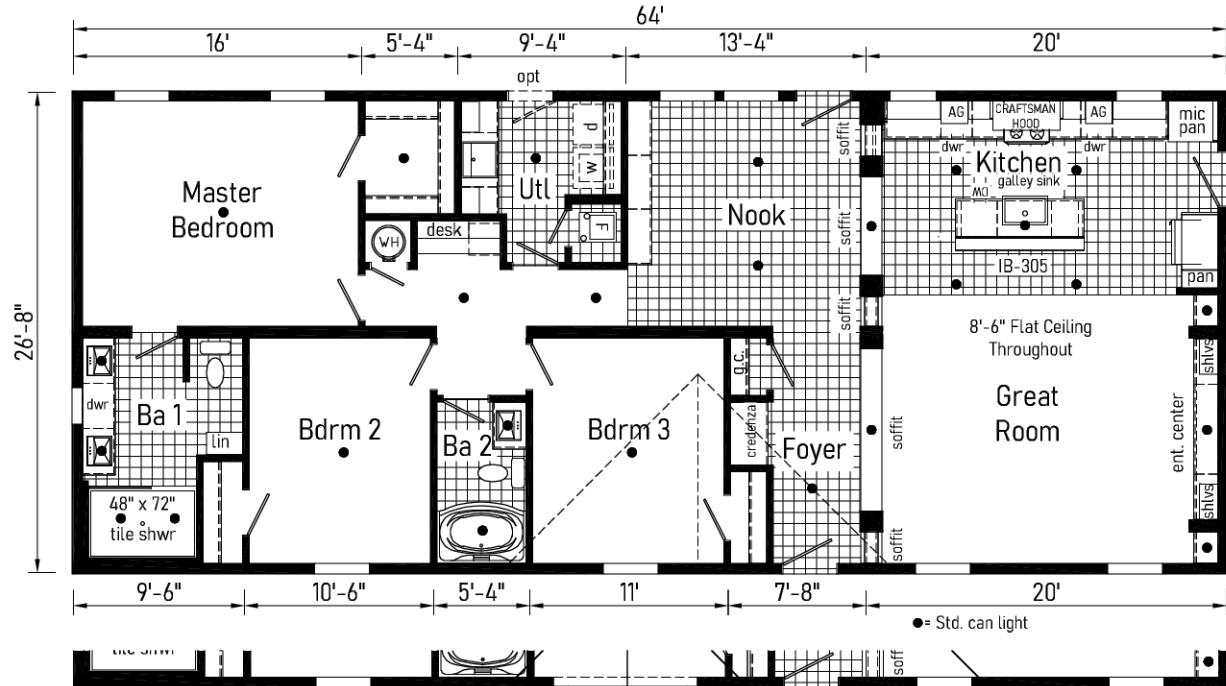


28' X 64'

APPROX. 1707 SQ. FT.



Optional Stairwell
(omits credenza)



Curb Side Exterior Options

Opt 26'-8" dormer w/13'-4" box-bay 73

MODULAR

3



2



Ruby - 9T28683A

(DEM3043P)

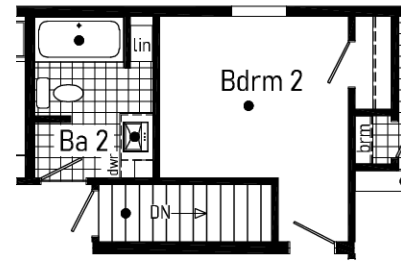
09



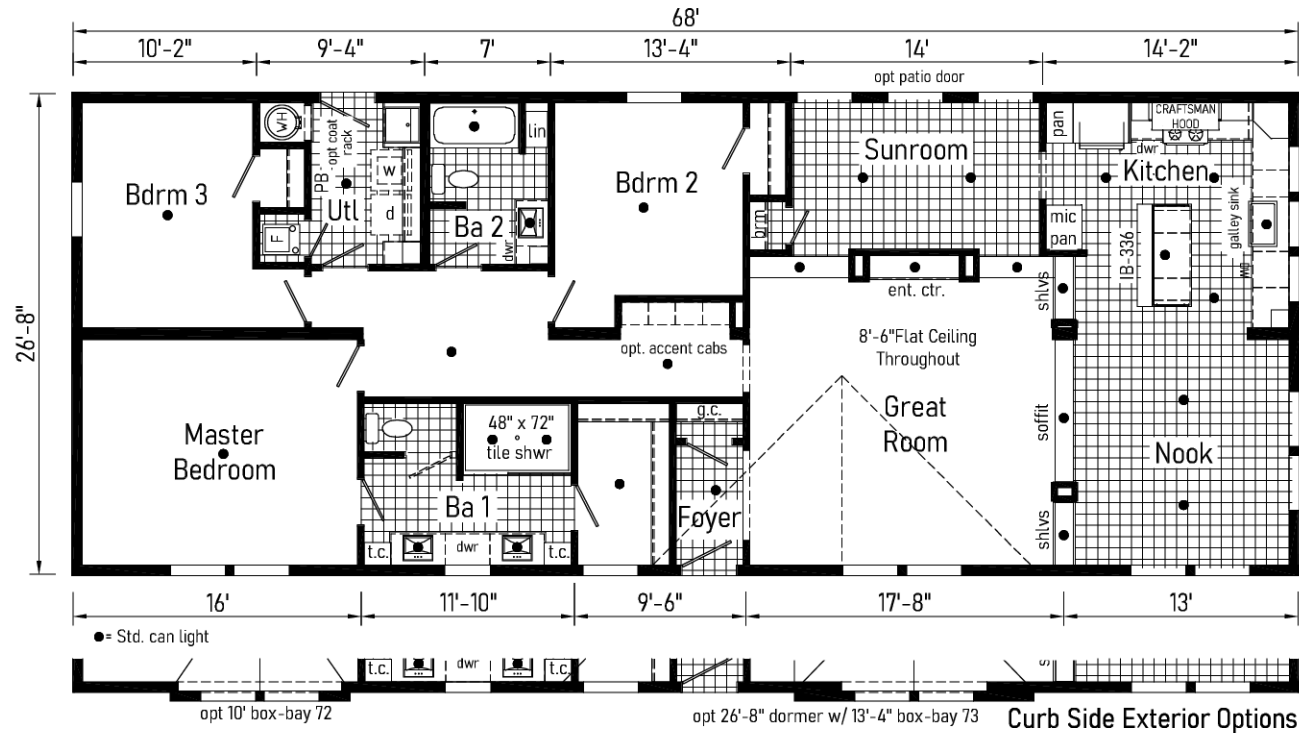
28' X 68'

APPROX. 1813 SQ. FT.

MODULAR



Optional Stairwell



3



2



Sapphire - 9T28683B

(DEM3044P)

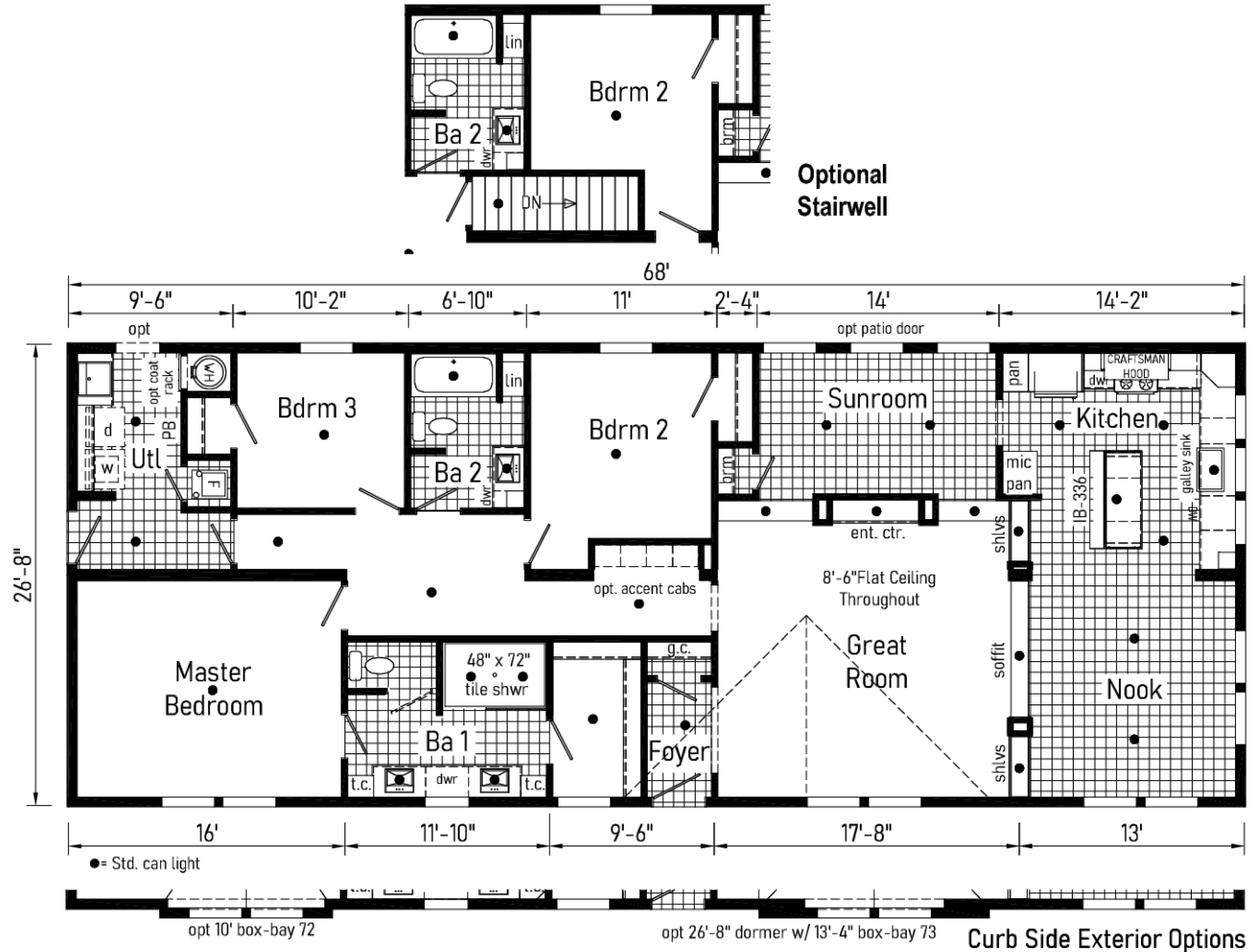
10



28' X 68'

APPROX. 1813 SQ. FT.

MODULAR



Curb Side Exterior Options

3



2



Topaz - 9T28683C

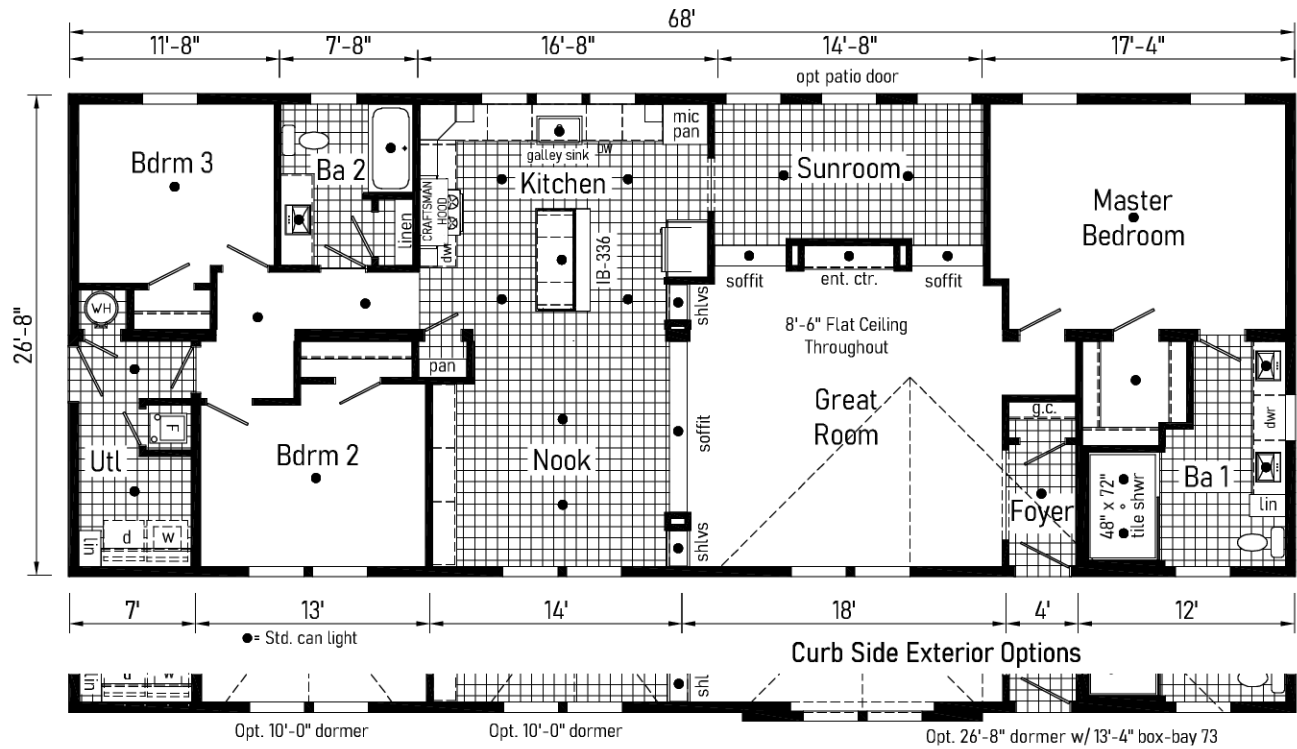
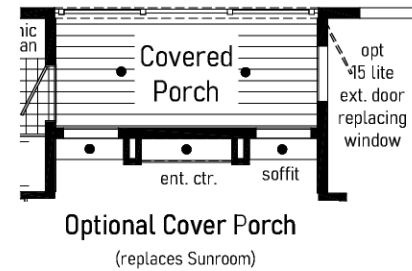
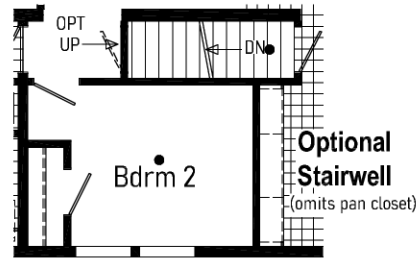
(DEM3045P)



28' X 68'

APPROX. 1813 SQ. FT.

MODULAR



STANDARD FEATURES

INTERIOR

Flat Ceiling Throughout
Smooth Ceiling no Cove
8'6" Sidewall Height
Primed Smooth Drywall Throughout
LED Flush Mount Ceiling Lights
Pre-Hung Door Jambs
Mortise Hinges
Lever Interior Passage Sets
Floor Mount Door Stops
Smoke Detectors With Battery Back-Up
Wire Shelving in Guest Closet
White 2-Panel Passage Doors
Craftsman Moulding Package

EXTERIOR

Gatsby Light - Front & Rear Door
GFI-Protected Exterior Receptacles
(Front & Back)
Vinyl Dutch Lap Siding
OSB with Wind Wrap
5/12 Roof Pitch with 10" Eaves
12" Gable End Overhang
Ridgevent Roof Ventilation System
38x82 Fiberglass 6-Panel Front Door
38x82 Fiberglass 6-Panel Rear Door
Schlage Exterior Locksets Keyed Alike
68" Vinyl Insulated Windows w/Grids

CONSTRUCTION

2x6 Transverse Floor, 16" centers**
2x6 Exterior Walls on 16" Centers**
¾" T&G OSB Floor Decking
40# Roof Load
Recessed Frame Design

***NOTE: Spacing for Framing
Members may vary due to
Design Requirements*



KITCHEN

30" Deluxe Black Gas Range
Power Range Hood with Light
18 Cubic Foot Black, No-Frost Refrigerator
Craftsman Range Hood
Apron Front Galley Sink
1 USB Receptacle

BATHS

Curved Front Garden Tub/Shower Bath 2
4x6 Ceramic Walk-in Shower - Bath 1
1.6 Gallon Per Flush Elongated Toilets
China Stool, Tank and Lid
Square China Lav Sinks
Lighted Vent Fan in Each Bath
Structured Flow Faucets
Anti-Scald Faucets in Tub/Shower
Shower Drain with Removable Strainer
Double Lav Sinks in Master Bath

CABINETRY

Evermore Custom Cabinetry (KCMA Certified)
Premium Cabinetry - Stained Hardwood
Mission Style Cabinet Doors
Euro Cabinet Pulls
Contemporary Moulding on Cabinets
Lined Overhead Cabinets
42" Height Overhead Cabinets
Drawer over Door Base Cabinets
Concealed Cabinet Hinges
Soft Close Drawers
Dovetail Drawers
Soft Close Cabinet Doors
Base and Center Shelves in Base Cabinets
Base Shelf in Vanities
36" High Bath Vanities



UTILITIES

Plumbed and Wired for Washer
Vented and Wired for Dryer
Wire Shelf over W/D Hookups
200 AMP Electrical Service with Extended
Panel
40 Gallon Electric Water Heater with Pan
Hi-Efficiency Gas Furnace
White 2-Panel Furnace Door w/Grill
Perimeter Heating System
Air Exchanger System for Furnace
Aluminum Heat Ducts
In-Floor Cross-Over Heating System
Copper Wiring Throughout
Main Water Line Shut-Off Valve
8 Wire Thermostat
Water Shut-Off Valves
Exterior Water Faucet (Front & Back)

FLOORING

Choice of Various Styles of Textured Carpet:
- Standard Shaw Cape Canaveral
- Upgrade Styles Available
Rebond Carpet Pad with Tackstrip
Carpet Installation
Shaw Fortress Vinyl Flooring per print

BEDROOMS

LED Flush Mount Lights
Egress Window Each Bedroom
Wire Shelving in Wardrobes
Switched LED Light in All Walk-In Closets

INSULATION

R-19 Fiberglass in Walls
R-31 Avg. Blown in Ceiling

20510 Paint Blvd.
Shippenville, Pennsylvania 16254

814-226-9590
www.cavcohomes.com/shippenville

Your purchase contract including options is with your retailer who is an independent contractor, not our agent, and is responsible totally for any alterations, exchanges, additions or attachments made in or to your home.

All descriptive representations of the products on this brochure are believed to be correct at the time of publication. However, due to continued product improvement and changes in suppliers design and production, accuracy cannot be guaranteed. Therefore, equipment colors, material specifications, prices and model availability are subject to change without notice. All information and images contained in this brochure are property of Cavco Homes and for the use by active dealers of the company only. © AP125659 2.5M 11/25