

2024



INSPIRATION_{LE}

Single Wide Homes



THE STANDARD IN AFFORDABLE LUXURY
HOUSING AMERICAN FAMILIES SINCE 1971



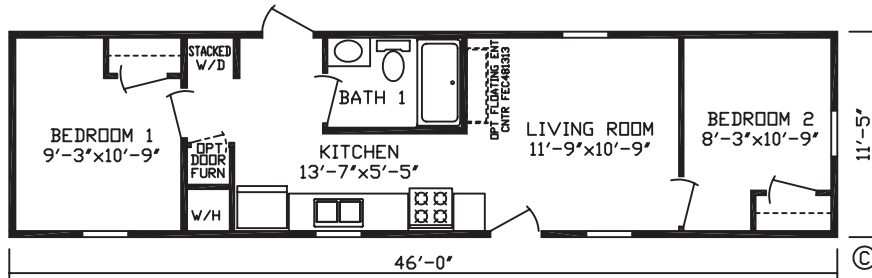
fairmonthomes.com

12 WIDES

HARRIS

MODEL #24506

2 Br - 1 Bath - 525 Sq Ft

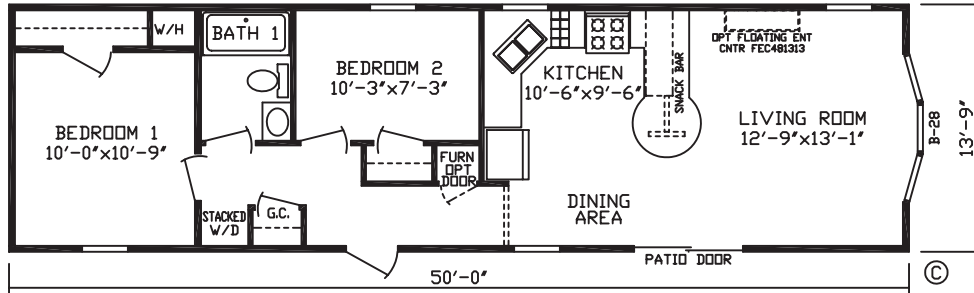


14 WIDES

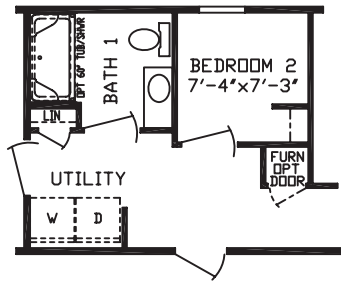
ROSEN

MODEL #24503L

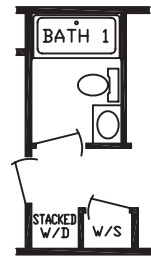
2 Br - 1 Bath - 687 Sq Ft



RO 1 Opt Bath 1,
Utility, Bedroom 2



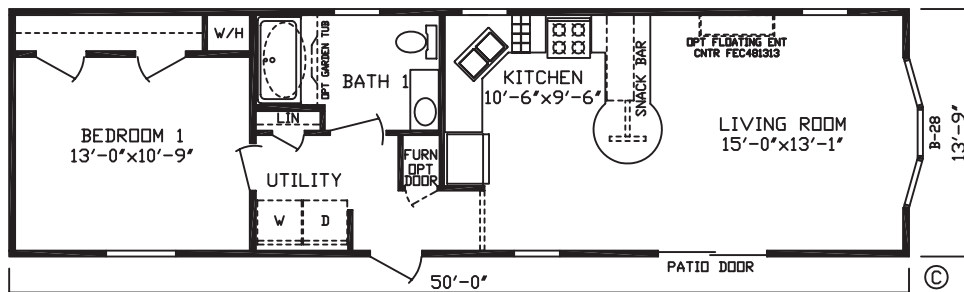
RO4 Opt Water Softener



HARTHMAN

MODEL #24526L

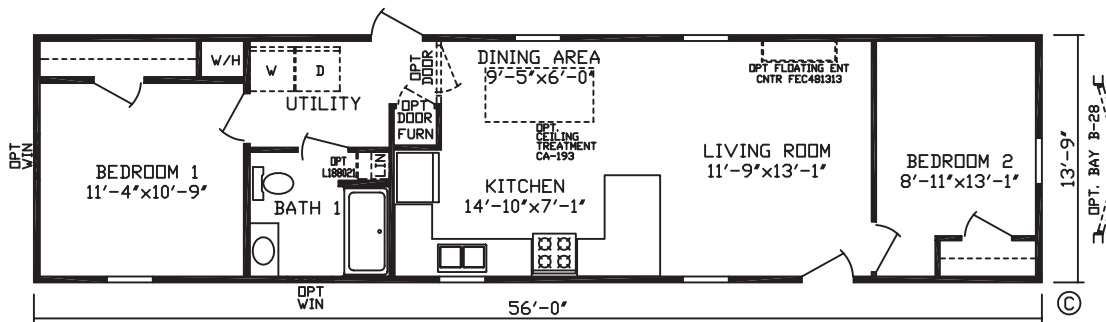
1 Br - 1 Bath - 687 Sq Ft



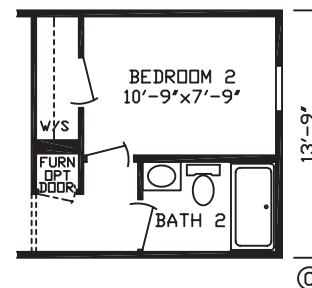
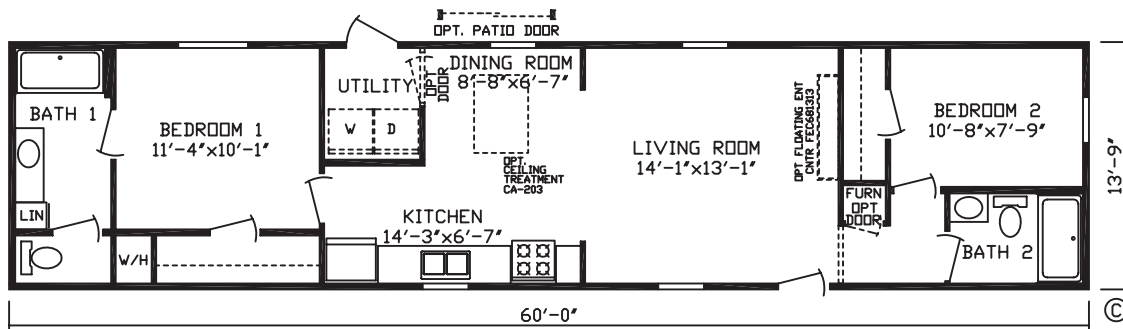
14 WIDES



PIERRE
 MODEL #24514
 2 Br - 1 Bath - 770 Sq Ft



CLINTON
 MODEL #24507
 2 Br - 2 Bath - 825 Sq Ft



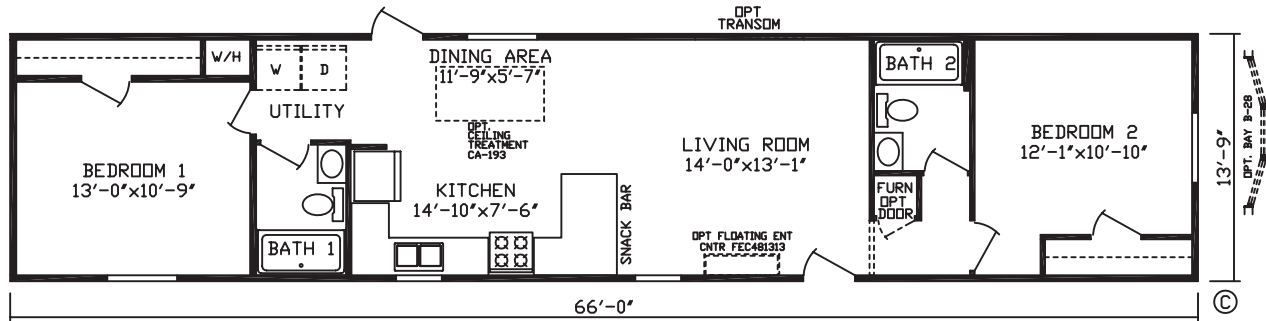
RO 1 Opt
 W/S

14 WIDES

PORTER

MODEL #24515

2 Br - 2 Bath - 908 Sq Ft

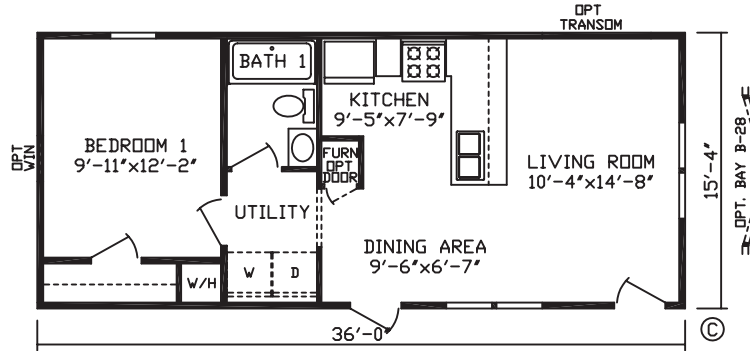


16 WIDES

THE SCHUTZ

MODEL #24527L

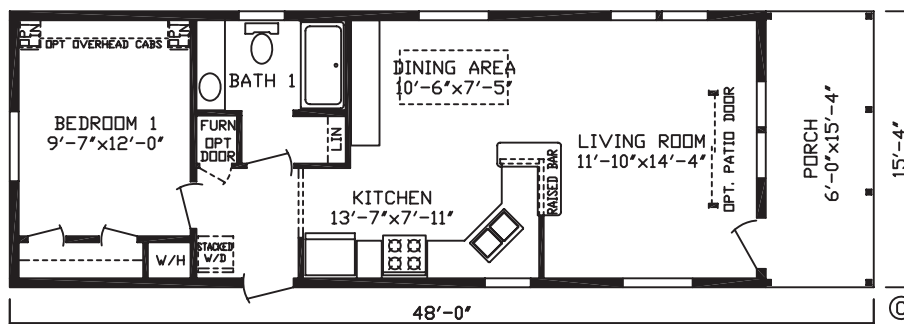
1 Br - 1 Bath - 550 Sq Ft



HAYDEN

MODEL #24528

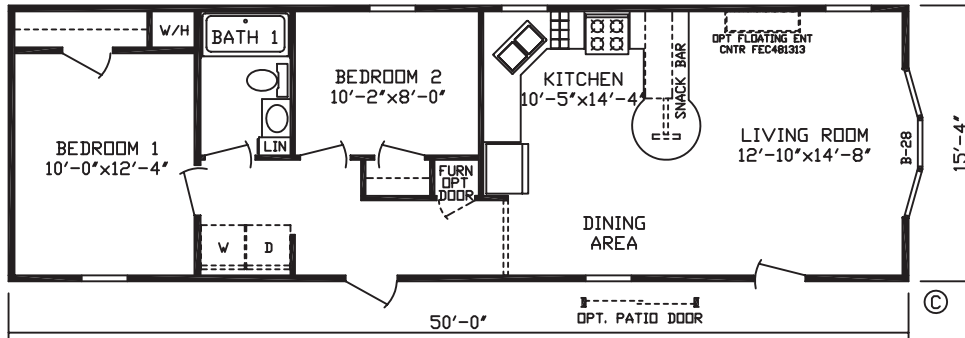
1 Br - 1 Bath - 644 Sq Ft



16 WIDES

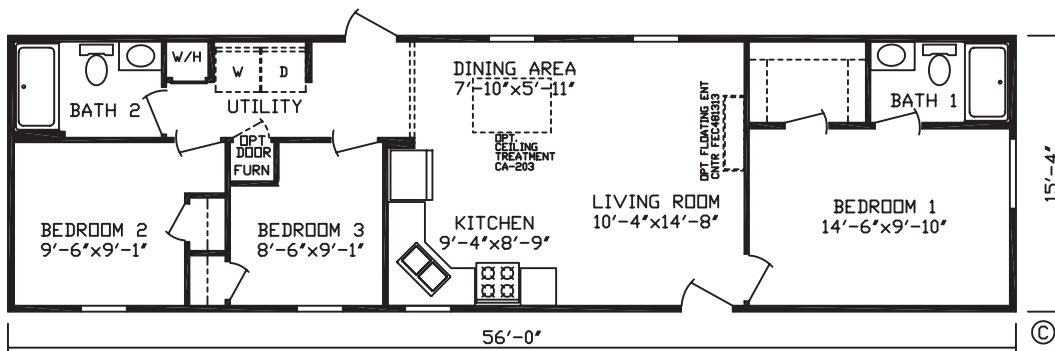
HANDEL

MODEL #24516L
2 Br - 1 Bath - 767 Sq Ft



BERNSTEIN

MODEL #24518
3 Br - 2 Bath - 858 Sq Ft

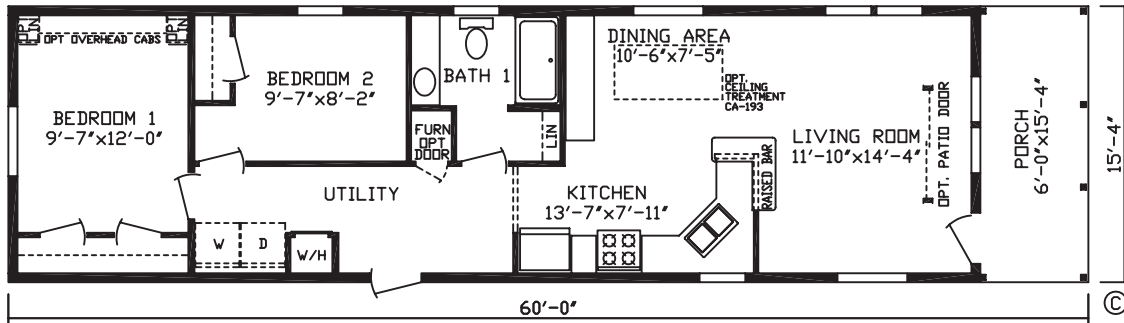


16 WIDES

CORELLI

MODEL #24529

2 Br - 1 Bath - 828 Sq Ft

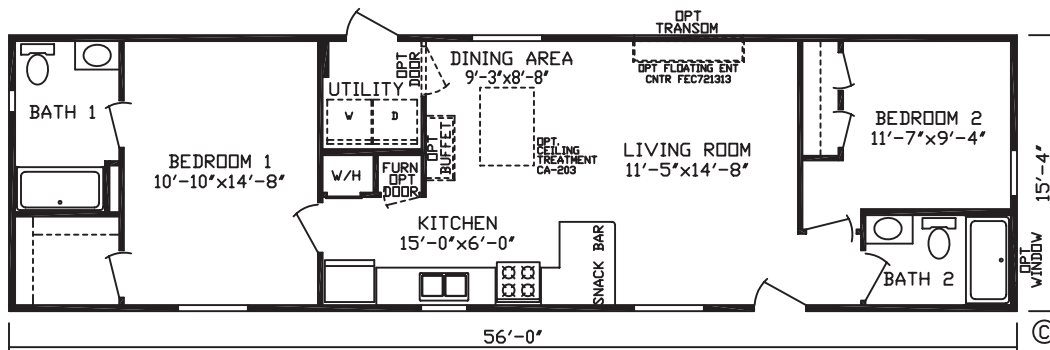


©

BELL

MODEL #24522

2 Br - 2 Bath - 858 Sq Ft



©



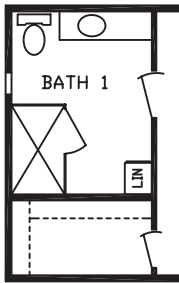
16 WIDES

HARRISON

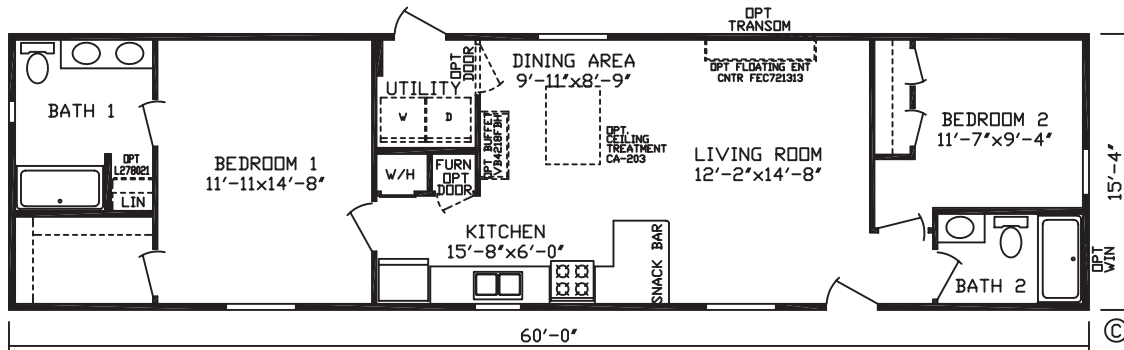
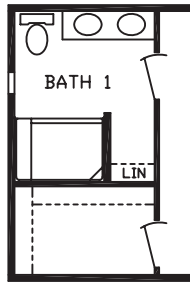
MODEL #24521

2 Br - 2 Bath - 920 Sq Ft

RO 1 Opt Bath 1



RO 2 Opt Bath 2

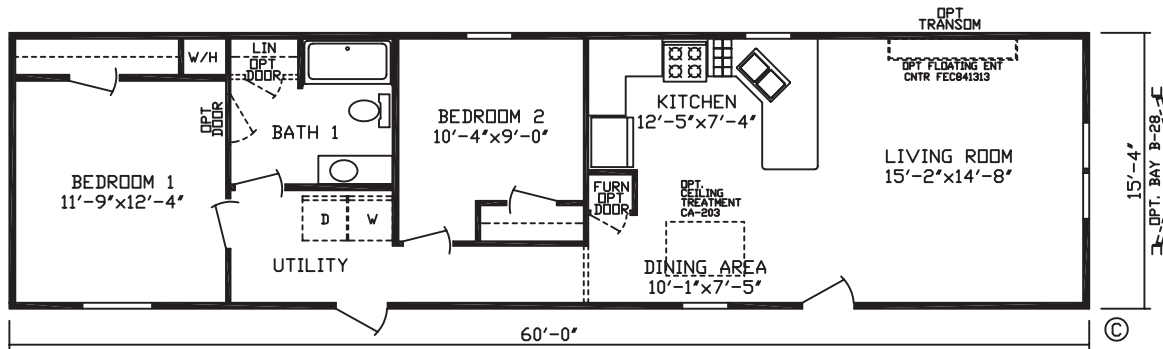


16 WIDES

HENDRIX

MODEL #24505L

2 Br - 1 Bath - 920 Sq Ft

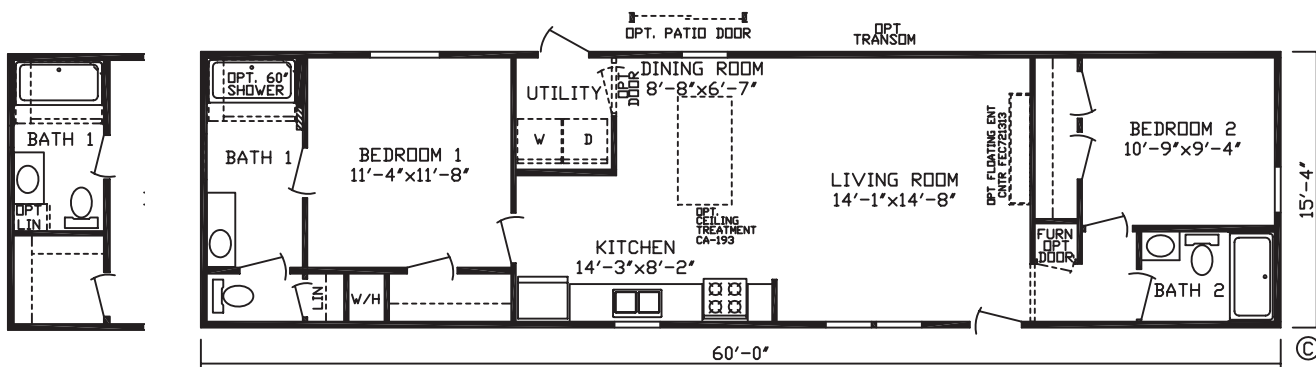


ADLER

MODEL #24501

2 Br - 2 Bath - 920 Sq Ft

RO3 Opt Bath 1



RO 1 Opt Kitchen

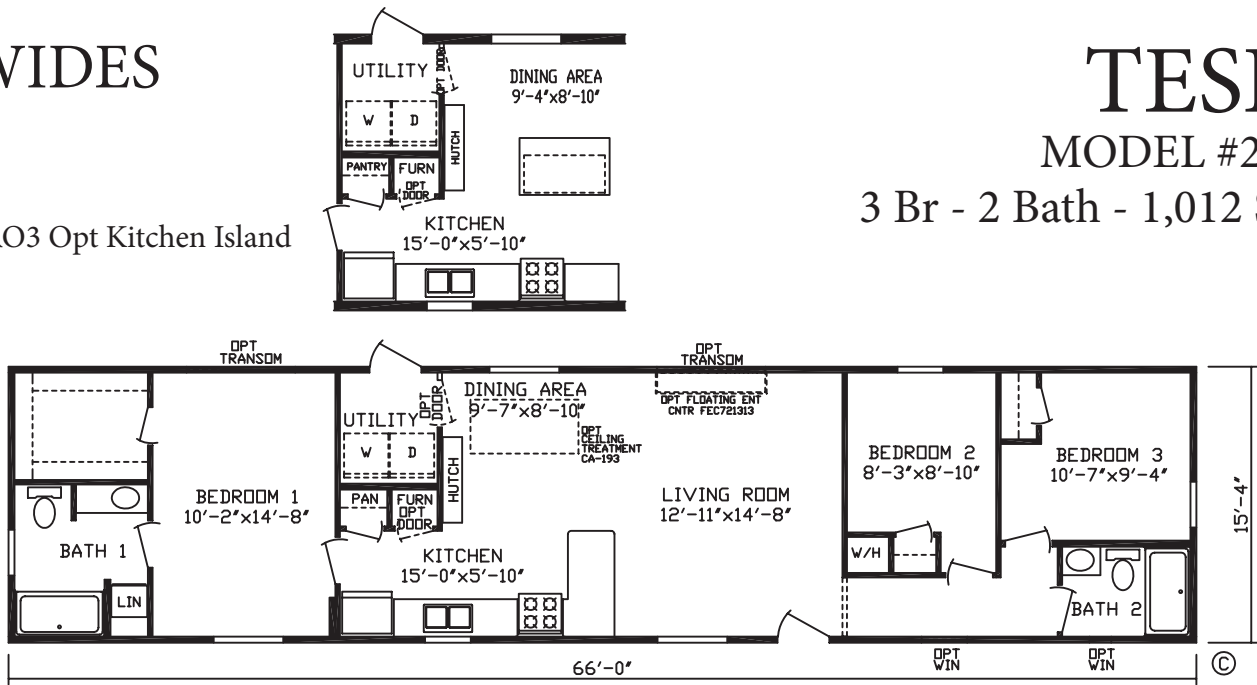
16 WIDES

TESLA

MODEL #24523

3 Br - 2 Bath - 1,012 Sq Ft

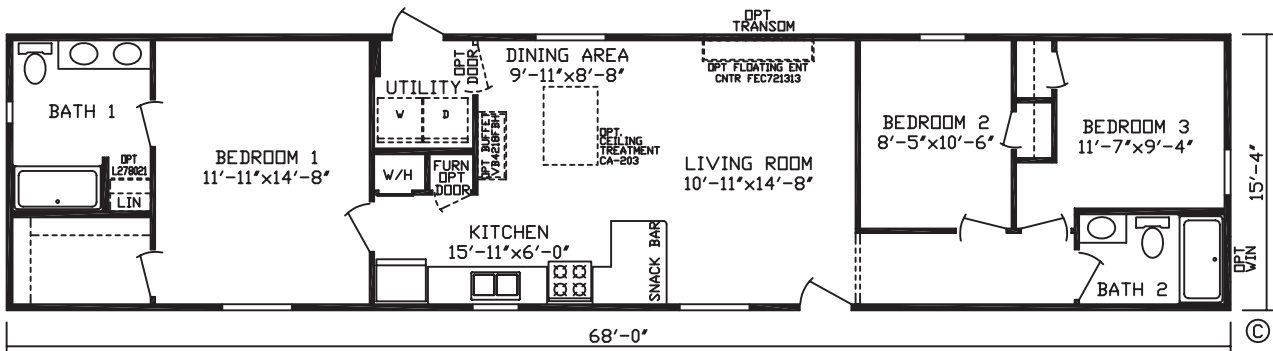
RO3 Opt Kitchen Island



CULLEN

MODEL #24520

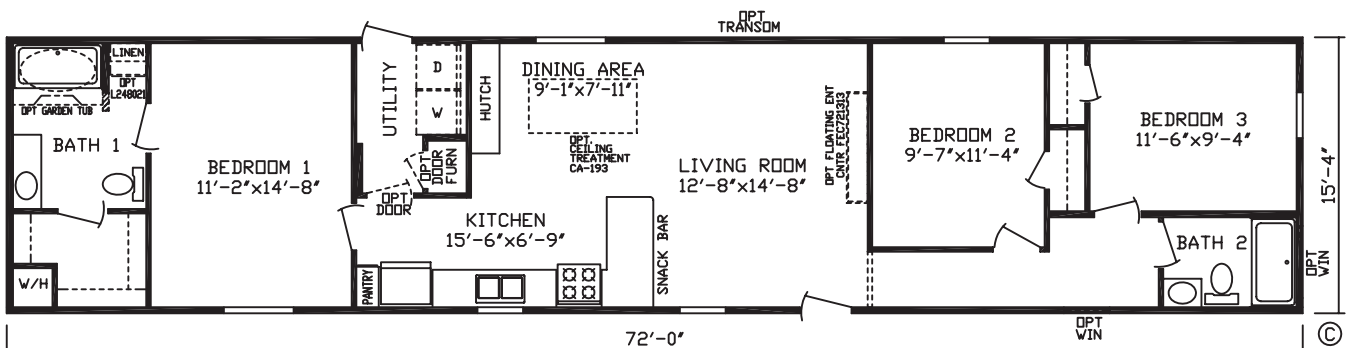
3 Br - 2 Bath - 1,042 Sq Ft



HAYDEN

MODEL #24512

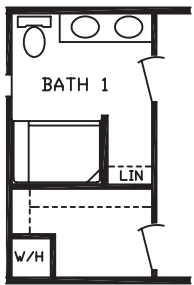
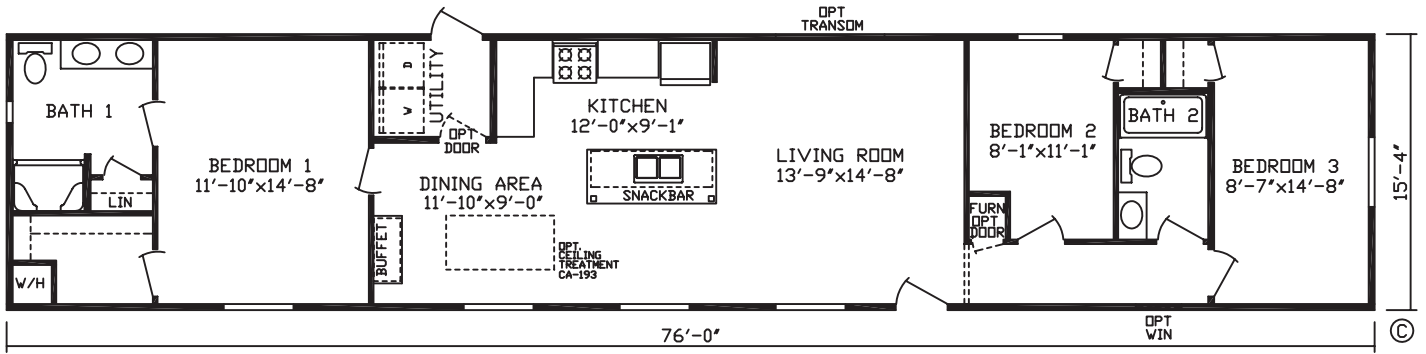
3 Br - 2 Bath - 1,104 Sq Ft



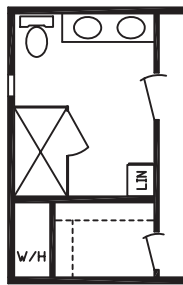
16 WIDES

BAIRD

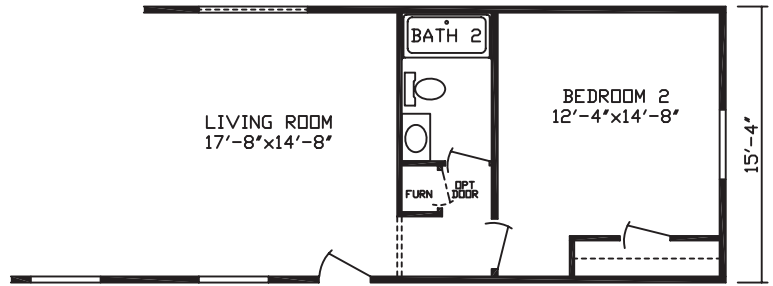
MODEL #24519
3 Br - 2 Bath - 1,165 Sq Ft



RO 2 Opt Bath 1



RO 3 Opt Bath 1



RO 4 Opt 2 Bedroom

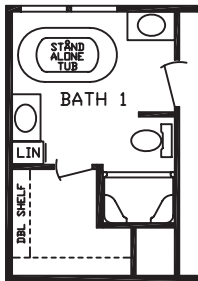
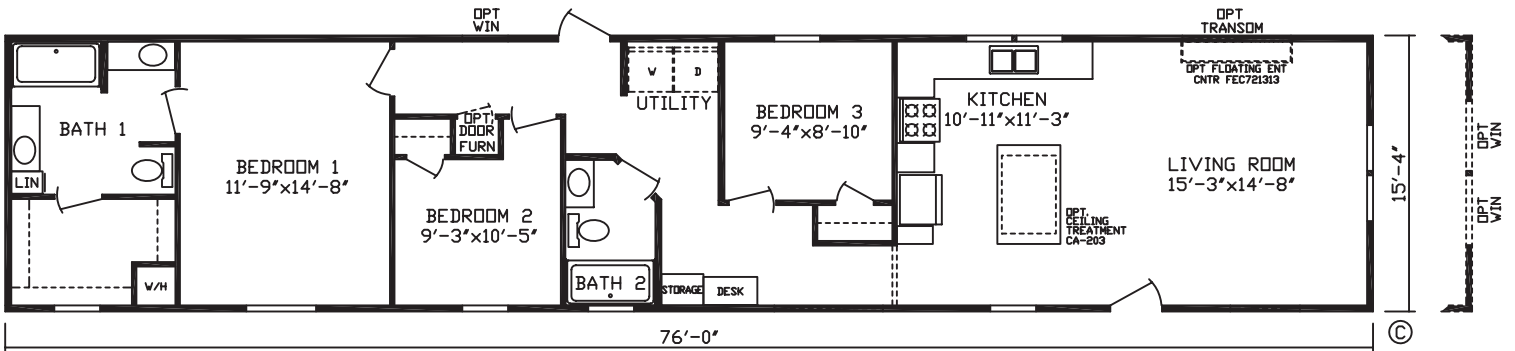


16 WIDES

HERTZ

MODEL #24524

3 Br - 2 Bath - 1,165 Sq Ft



RO3 Opt Bath Tub

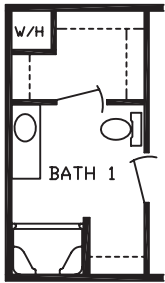


16 WIDES

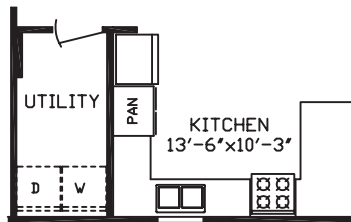
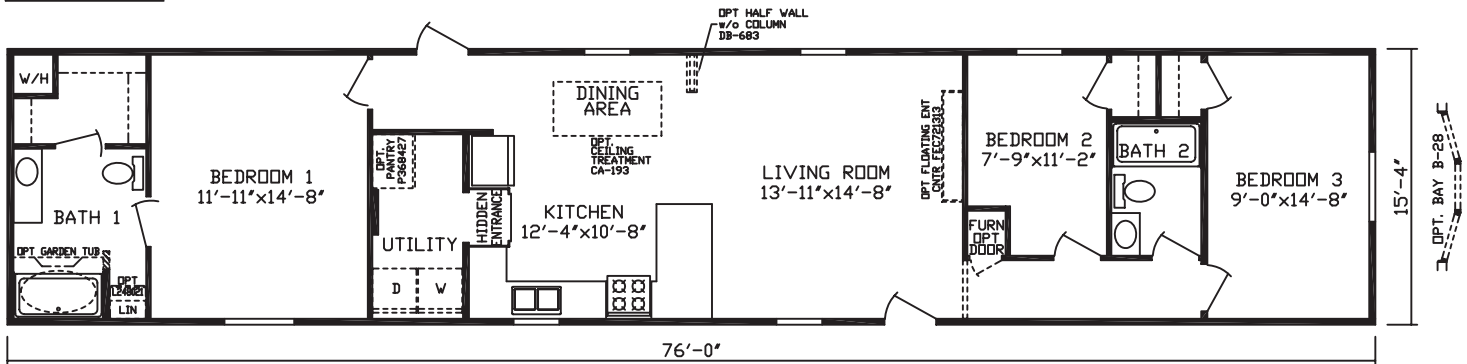
MOZART

MODEL #24502

3 Br - 2 Bath - 1,165 Sq Ft



RO 2 Opt Bath 1



RO 5 Opt Kitchen

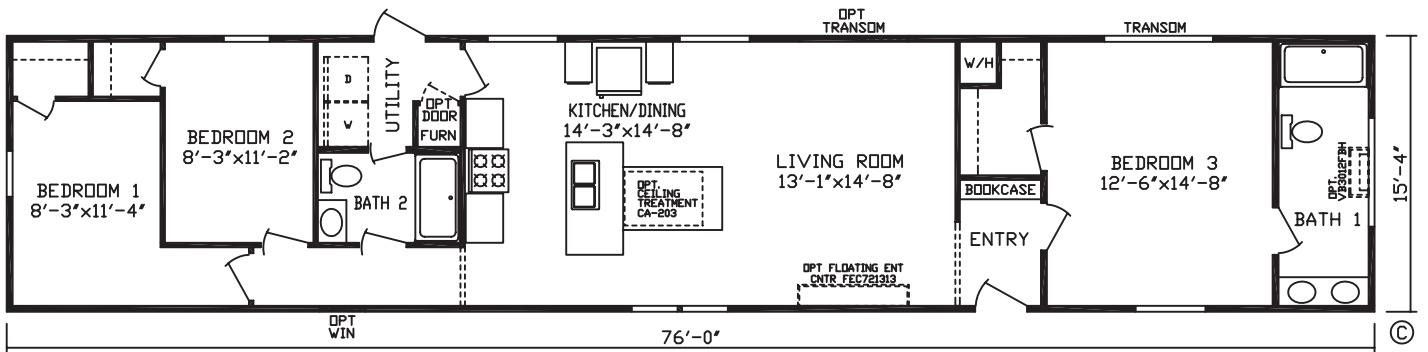


16 WIDES

NATIONAL

MODEL #24525

3 Br - 2 Bath - 1,165 Sq Ft



INSPIRATION_{LE}

Standard Features

Single Wide Homes

Energy Saving Standard Features

- 7/16 OSB Exterior Sheathing
- R-29 Roof Insulation
- 2x4 Sidewalls w/R-11 Insulation
- Gas Furnace
- Positive Operating System

Exterior & Construction

- Nominal 3/12 Roof Pitch
- 8' Sidewall Height w/Flat Ceiling
- Rafters 24" O.C.
- 16" O.C. Floor Joists
- 19/32" Tongue & Groove 4x8 OSB Floor Decking
- R-11 Floor Insulation
- Tamko 25 Year Shingled Roof
- Royal Double 4" Dutch Vinyl Lap Siding
- Ice & Water Barrier
- Exterior Weather Wrap
- Shutters Doorside & Hitchend

Floor Coverings

- Shaw® Take Away Carpet
- Congoleum® Roll Goods
- Rebond Carpet Pad
- Roll Goods in Living Room, Baths, Kitchen, Dining Room, Utility & Foyer
- Tack Strip Carpet Installation in Bedrooms & Halls
- Carpet Bar Where Applicable

Electrical

- Exterior GFI Weather Resistant Receptacle on Sidewall
- GFI Bath & Kitchen Receptacles
- Smoke Alarms
- Wire & Vent for Dryer
- Rust Coach Light at Front & Rear Door
- Recessed LED Can Lights — Dining Room, Bedrooms, 1 in Kitchen, 1 at Kitchen Sink
- 100 AMP Service

Décor

- 1/2" Decorative Vinyl on Gypsum Walls
- Textured Stippled Ceilings
- 3-5/8" Crown Molding in Living Room, Dining Room, Kitchen & Hall w/Flat Trim in Remainder of Home
- 1-1/2" Door & Window Casing
- Mini Blinds Throughout
- Fabric Valances in Living Room & Bedrooms

Plumbing

- Single Lever Bath Faucet w/ Shower Head
- Plumbing for Washer
- 30 Gallon Electric Water Heater
- 7" Deep Stainless Steel Kitchen Sink
- 2 Handle Kitchen Faucet
- Main Water Shut-off Below Floor
- Water Heater Access Panel (Per Print)

Baths

- 1-Piece Fiberglass Tub / Shower in Baths
- Pop-Up Drains on Bath Sinks w/ Overflows
- Power Exhaust Fan
- Formica Backsplash
- Frameless Mirrors
- Porcelain Lav

Doors and Windows

- Easy Clean Tilt-Out Sash, Single-Hung Windows
- Kinro® White Low-E Vinyl Windows
- 34" x 82" Decorator 6-Panel Steel Front Door w/Storm & Deadbolt
- 34" x 82" 9-Lite Cottage Rear Door
- Dead Bolt Security Lock on Steel Front Door
- Floor Mounted Door Stops
- Triple Hinged Interior Doors
- Pre-Hung 2-Panel White Interior Doors
- Nickel Interior Door Knobs

Cabinetry

- 40" Overhead Kitchen Cabinets
- Shaker Style Wrapped Cabinetry w/Wrapped Stiles
- Hidden Hinges
- Dove Tail Drawer Construction
- Side Mounted Drawer Guides
- Formica Kitchen Backsplash
- Shelf in Washer / Dryer Area

Appliances

- S.S. 18 CF Frost Free Refrigerator
- S.S. 30" Standard Gas Range
- S.S. Euro Range Hood



2181 East Market Street • Nappanee, IN 46550 • fairmonthomes.com

FAIRMONT HOMES — Built Better with Brand Name Components



Note: Fairmont Homes reserves the right to make changes in price, colors, materials, components and specifications and to discontinue models at any time without notice or obligation. Fairmont Homes assumes no responsibility for any error in type or print reproduction of specifications or floor plans in this brochure. ©2023 Fairmont Homes LLC, ALL RIGHTS RESERVED, Rev 01/2024